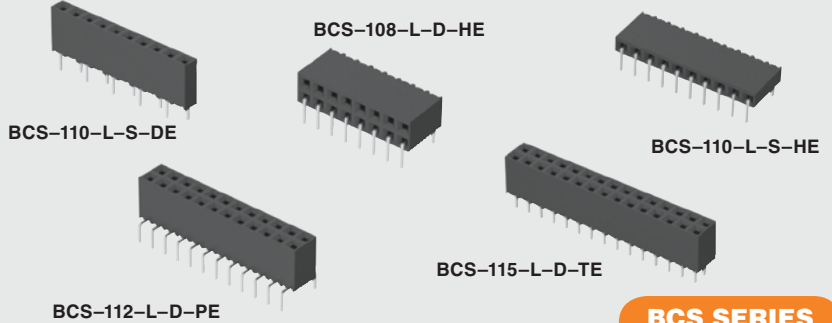




(2.54 mm) .100"



BCS SERIES

# TIGER CLAW™ PASS-THROUGH SOCKET

**Mates with:**  
 TSW, MTSW, HTSW,  
 HMTSW, TSS, ZSS,  
 DW, EW, ZW, HW, TSM,  
 MTLW, PHT

## SPECIFICATIONS

For complete specifications see [www.samtec.com?BCS](http://www.samtec.com?BCS)

**Insulator Material:** Black Liquid Crystal Polymer

**Contact Material:** Phosphor Bronze

**Plating:** Au or Sn over 50 μm (1.27 μm) Ni

**Current Rating (BCS/TSW):** 4.6 A per pin (2 pins powered)

**Voltage Rating:** 475 VAC (-TE/-DE/-PE mated with TSM) 450 VAC (-HE mated with TSW)

**Operating Temp Range:** -55 °C to +125 °C

**Insertion Depth:** (4.34 mm) .171" to (7.24 mm) .285" from top, (5.64 mm) .222" plus board thickness minimum from bottom.

-HE is (4.34 mm) .171" to (6.35 mm) .250"

**RoHS Compliant:** Yes

**Lead-Free Solderable:** Yes

Yes

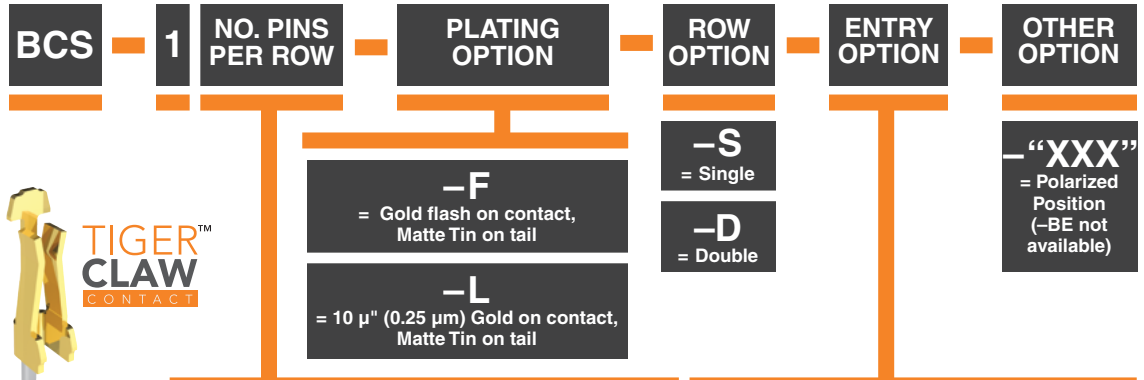
## RECOGNITIONS

For complete scope of recognitions see [www.samtec.com/quality](http://www.samtec.com/quality)

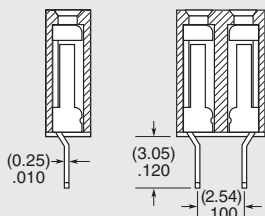
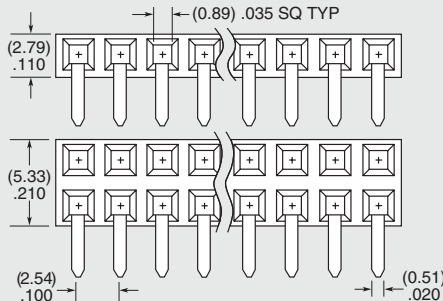
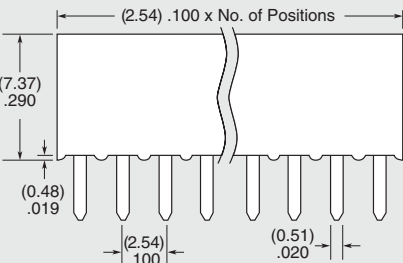
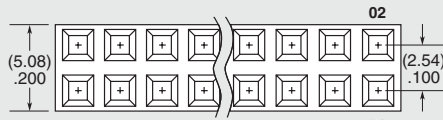


## ALSO AVAILABLE (MOQ Required)

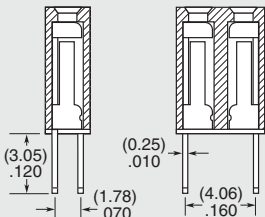
- Other platings



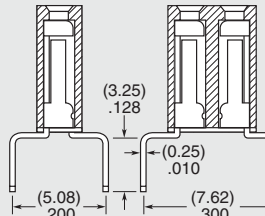
## 01 thru 50



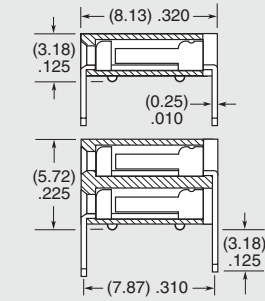
**-TE**  
= Top Entry



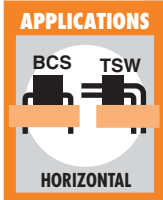
**-DE**  
= Top Entry (For Bottom Entry specify -DE-BE) Cannot be used with plated through-holes



**-PE**  
= Pass-through Entry (For Bottom Entry specify -PE-BE)



**-HE**  
= Horizontal Entry



**Note:** Some lengths, styles and options are non-standard, non-returnable.

Due to technical progress, all designs, specifications and components are subject to change without notice.

[WWW.SAMTEC.COM](http://WWW.SAMTEC.COM)

All parts within this catalog are built to Samtec's specifications. Customer specific requirements must be approved by Samtec and identified in a Samtec customer-specific drawing to apply.

# Mouser Electronics

Authorized Distributor

Click to View Pricing, Inventory, Delivery & Lifecycle Information:

## Samtec:

[BCS-130-L-D-PE](#) [BCS-111-L-D-PE](#) [BCS-116-L-S-PE](#) [BCS-104-L-D-PE](#) [BCS-116-L-S-TE](#) [BCS-109-L-D-HE](#) [BCS-108-L-D-TE](#) [BCS-102-L-D-PE](#) [BCS-117-L-D-HE](#) [BCS-104-L-S-PE-BE](#) [BCS-107-L-D-PE](#) [BCS-108-L-S-HE](#) [BCS-116-L-D-PE](#) [BCS-108-L-D-PE](#) [BCS-110-L-D-DE](#) [BCS-108-L-D-HE](#) [BCS-107-L-D-TE](#) [BCS-103-L-D-HE](#) [BCS-105-L-D-HE](#) [BCS-112-L-S-PE](#) [BCS-125-L-D-TE](#) [BCS-106-L-D-TE](#) [BCS-115-L-D-PE-BE](#) [BCS-111-L-S-HE](#) [BCS-113-L-D-TE](#) [BCS-112-L-D-TE](#) [BCS-114-L-D-HE](#) [BCS-104-L-D-HE](#) [BCS-109-L-D-TE](#) [BCS-112-L-D-PE](#) [BCS-120-L-D-TE](#) [BCS-116-L-S-PE-BE](#) [BCS-103-L-D-TE](#) [BCS-130-L-D-HE](#) [BCS-113-L-D-PE](#) [BCS-110-L-D-TE](#) [BCS-107-L-S-HE](#) [BCS-115-L-D-HE](#) [BCS-114-L-S-HE](#) [BCS-105-L-D-TE](#) [BCS-103-L-S-PE-BE](#) [BCS-122-L-D-PE](#) [BCS-111-L-D-PE-BE](#) [BCS-116-L-D-PE-BE](#) [BCS-125-L-D-PE](#) [BCS-115-L-D-TE](#) [BCS-104-L-D-TE](#) [BCS-117-F-D-PE](#) [BCS-126-F-D-TE](#) [BCS-112-L-D-PE-BE](#) [BCS-118-L-D-PE](#) [BCS-119-L-S-TE](#) [BCS-112-LM-D-TE](#) [BCS-127-L-D-HE](#) [BCS-106-F-D-TE](#) [BCS-116-F-S-PE-BE](#) [BCS-124-L-S-PE-BE](#) [BCS-126-L-S-HE](#) [BCS-115-L-D-PE](#) [BCS-103-F-S-TE](#) [BCS-112-L-S-TE](#) [BCS-120-L-S-PE-BE](#) [BCS-106-L-S-TE](#) [BCS-122-L-D-TE](#) [BCS-115-L-S-PE-BE](#) [BCS-114-L-D-PE-BE](#) [BCS-135-L-S-HE](#) [BCS-105-F-D-TE](#) [BCS-120-LM-D-TE](#) [BCS-126-L-D-HE](#) [BCS-107-F-S-TE](#) [BCS-108-L-S-PE](#) [BCS-114-L-S-TE](#) [BCS-150-L-S-TE](#) [BCS-102-L-D-TE](#) [BCS-104-F-D-TE](#) [BCS-130-LM-S-HE](#) [BCS-106-F-S-TE](#) [BCS-126-L-D-PE](#) [BCS-107-F-S-HE](#) [BCS-128-L-D-HE](#) [BCS-115-F-D-PE](#) [BCS-119-L-D-TE](#) [BCS-103-L-D-PE-BE](#) [BCS-130-L-D-PE-BE](#) [BCS-106-F-D-PE](#) [BCS-125-L-S-PE-BE](#) [BCS-110-F-S-HE](#) [BCS-110-L-S-HE](#) [BCS-115-L-S-TE](#) [BCS-109-L-S-PE-BE](#) [BCS-111-L-D-HE](#) [BCS-102-L-S-HE](#) [BCS-125-F-D-TE](#) [BCS-110-L-D-PE](#) [BCS-126-L-S-TE](#) [BCS-104-L-D-TE-001](#) [BCS-105-L-S-HE](#) [BCS-113-L-S-HE](#) [BCS-115-F-D-TE](#)