



*Quality Products. Service Excellence.*

## Type 4X, 6P Enclosures *1555F Series*

Watertight, Flanged Lid, UL Listed Options

### Features:



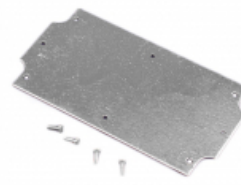
- Designed for harsh industrial environments or outdoor applications (security, outdoor wireless, controls etc. etc.)
- Ideally suited for mounting printed circuit boards, panels or DIN rail mounted components (see photo features for details).
- Designed for wall mounting. Interior is secure as lid screws are behind the lid. Can be made more secure if wall mounted with security screws (tamper resistant screws).
- Satin texture finish with smooth recessed surface on lid for a membrane keypad or label
- Standoffs molded in the interior of the lid & enclosure - designed for #4 x 1/4" self tapping screws (our part number 1555TS100)
- Choice of two materials:
  - General purpose ABS plastic (material carries a UL flammability rating of UL94 HB). Not recommended for outdoor use.
  - Polycarbonate (material carries a UL flammability rating of UL94 5VA @ 3mm) - Recommended for outdoor use.
- Color is a light gray (RAL 7035) to help keep heat absorption down.
- Gasketed lid with two piece "tongue & groove" construction provides protection against access of oil, dust and water.
- Gasket is one piece made from high temperature, U.L. listed silicone. Supplied loose inside the enclosure (not pre-installed).
- Designed to meet NEMA Type 4, 4X, 6, 6P, 12 & 13 ratings which meet and exceed IP ratings up to and including IP68.
- Polycarbonate version is UL 508A listed (File # E65324).
- Lid is secured with included M4 stainless steel machine screws which are threaded into corrosion resistant bushings for repetitive assembly & disassembly. All hardware is designed to avoid corrosion caused by harsh environments over time.
- Internal features are maximized for mounting options and vary with size:
  - Internal DIN rail mounting tabs molded into lid (except smaller 1555CF22 & 1555CF42 enclosures).
  - Standoffs (#6 self tapping screws) for P.C. board or inner panel



### Photo Features:



Cover features a smooth recessed area perfect for membrane keypads or labels. Base features robust mounting flanges capable of withstanding abuse.



Galvanized steel inner panels are available (refer to table below).



Internal features include mounting bosses for PC boards or inner panels. DIN rail mounting locations on all but size "C" models. Silicone gasket with tongue and grooves construction provides a water-tight seal.

### Accessories

- Breather Kit
- Small Rainproof Ventilator
- Pole Mount Kit
- Pressure Compensation Plug
- Liquid-Tight, Strain Relief Cordgrips

### Part Numbers

ABS Part Number	Polycarb (UL Listed) Part Number	Length	Width	Height	Inner Panel	Replacement Gasket (Pair)
1555BF22GY	1555B2F22GY	2.56	2.56	1.67	1555BFPL	1554BGASKET
1555EF17GY	1555E2F17GY	3.55	3.55	1.48	1555EFPL	1554EGASKET
1555EF42GY	1555E2F42GY	3.55	3.55	2.46	1555EFPL	1554EGASKET
1555CF22GY	1555C2F22GY	4.70	2.60	1.65	1555CFPL	1554CGASKET
1555CF42GY	1555C2F42GY	4.70	2.60	2.44	1555CFPL	1554CGASKET
1555FF17GY	1555F2F17GY	4.70	3.60	1.47	1555FFPL	1554FGASKET
1555FF42GY	1555F2F42GY	4.70	3.60	2.44	1555FFPL	1554FGASKET
1555NF17GY	1555N2F17GY	4.70	4.70	1.47	1555NFPL	1554NGASKET
1555NF42GY	1555N2F42GY	4.70	4.70	2.44	1555NFPL	1554NGASKET
1555JF17GY	1555J2F17GY	6.30	3.60	1.47	1555JFPL	1554JGASKET
1555JF42GY	1555J2F42GY	6.30	3.60	2.44	1555JFPL	1554JGASKET
1555RF17GY	1555R2F17GY	6.30	6.30	1.48	1555RFPL	1554RGASKET
1555RF42GY	1555R2F42GY	6.30	6.30	2.46	1555RFPL	1554RGASKET
1555HF17GY	1555H2F17GY	7.10	4.70	1.47	1555HFPL	1554HGASKET
1555HF42GY	1555H2F42GY	7.10	4.70	2.44	1555HFPL	1554HGASKET

*Data subject to change without notice*

© 2020. Hammond Manufacturing Ltd. All rights reserved.

# Mouser Electronics

Authorized Distributor

Click to View Pricing, Inventory, Delivery & Lifecycle Information:

## Hammond:

[1555CF22GY](#) [1555C2F22GY](#) [1555CF42GY](#) [1555C2F42GY](#) [1555FF17GY](#) [1555F2F17GY](#) [1555FF42GY](#)  
[1555F2F42GY](#) [1555JF17GY](#) [1555J2F17GY](#) [1555JF42GY](#) [1555J2F42GY](#) [1555CFPL](#) [1555FFPL](#) [1555JFPL](#)  
[1555H2F17GY](#) [1555H2F42GY](#) [1555HF17GY](#) [1555HF42GY](#) [1555N2F17GY](#) [1555N2F42GY](#) [1555NF17GY](#)  
[1555NF42GY](#) [1555HFPL](#) [1555NFPL](#) [1555RF42GY](#)