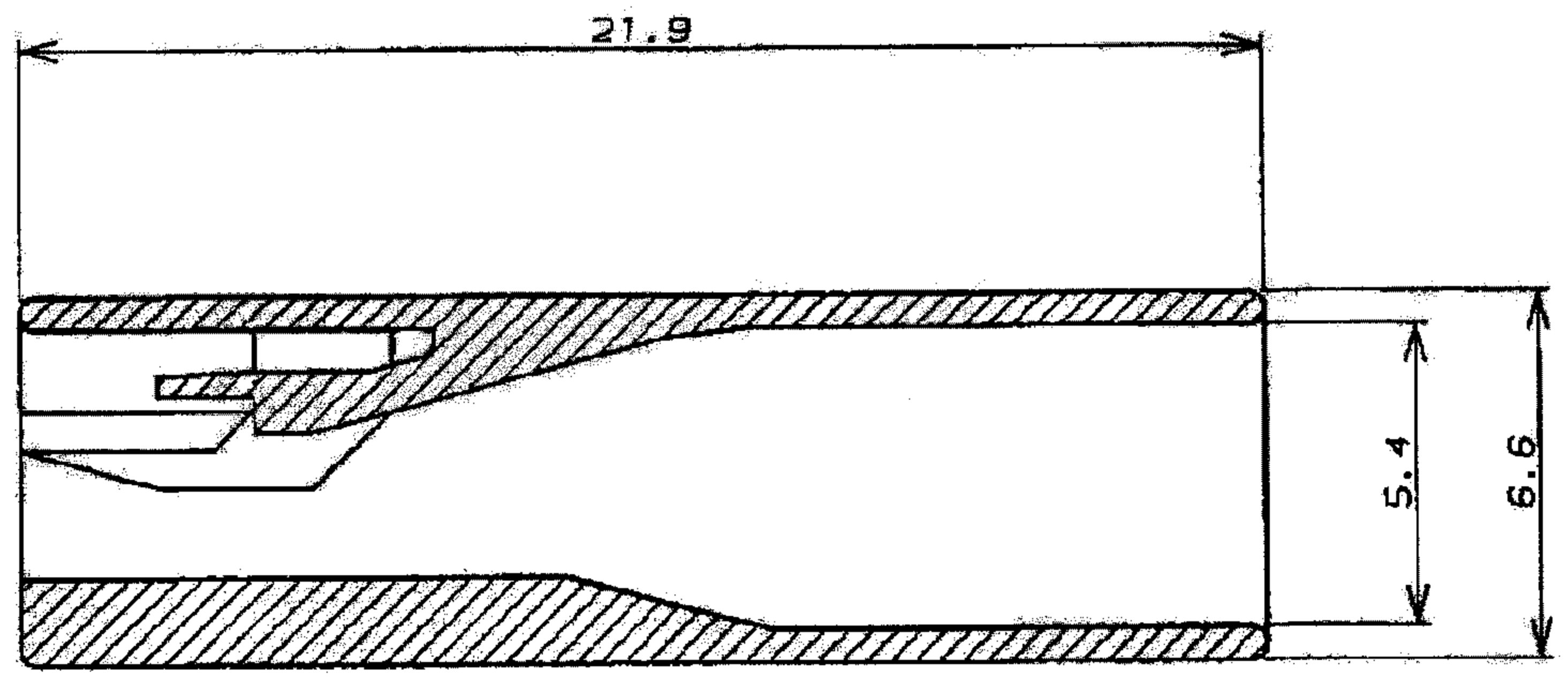
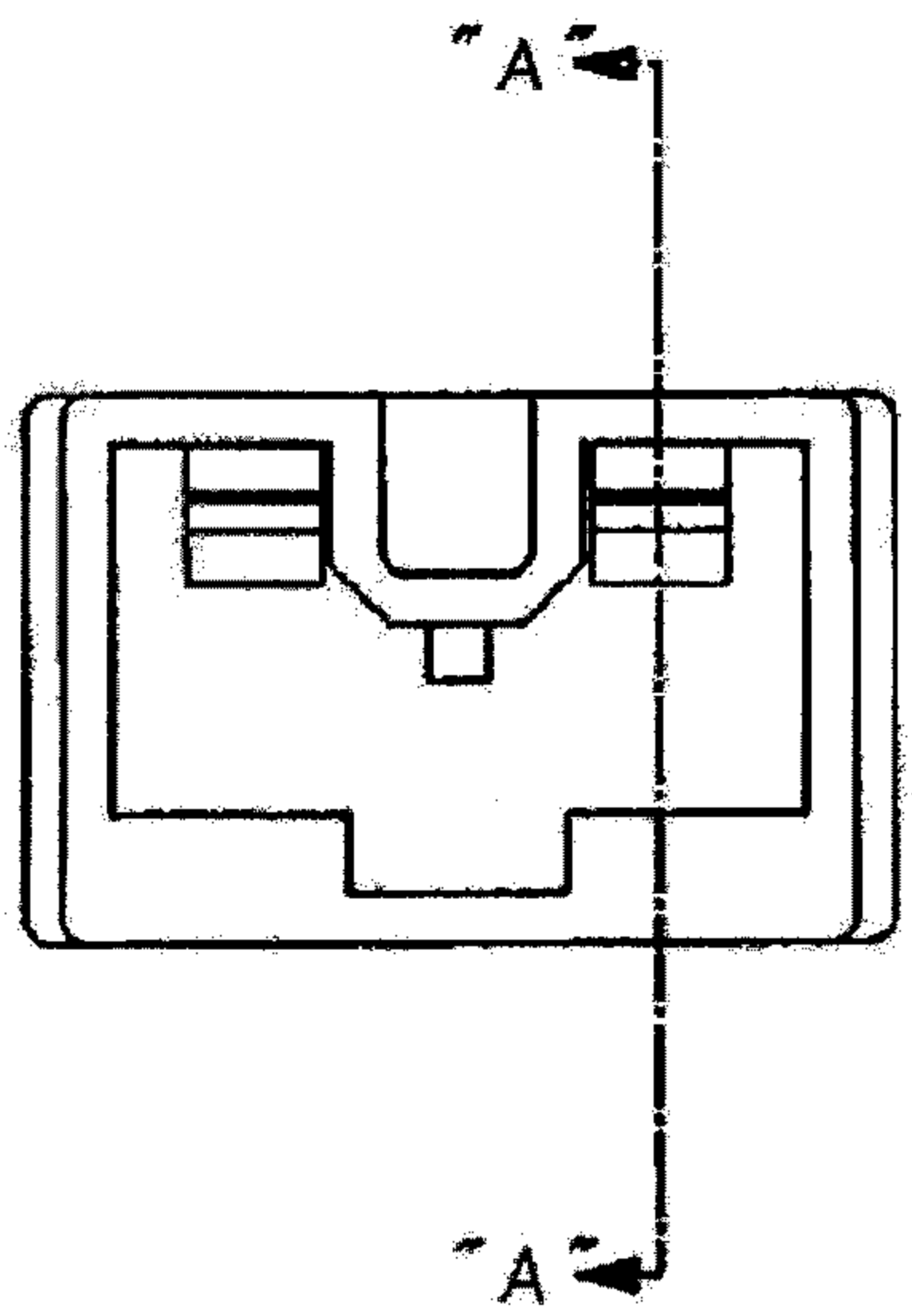
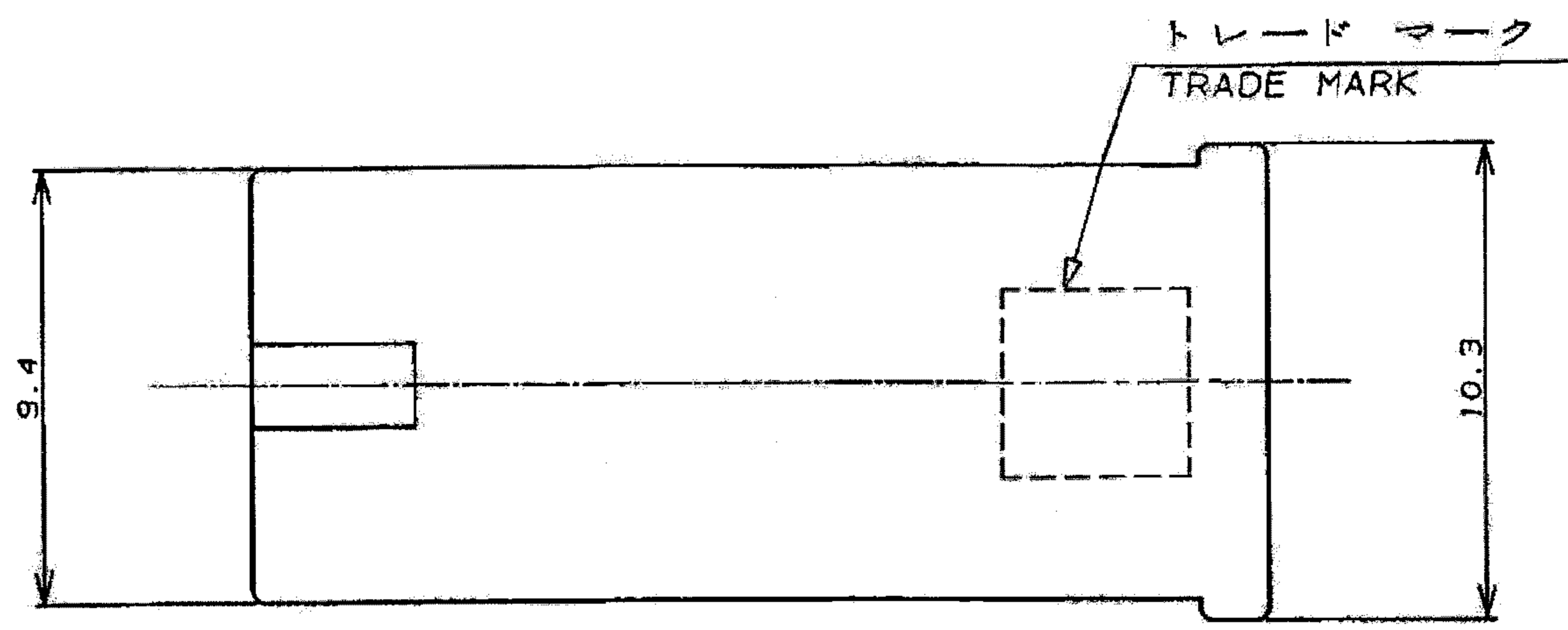


NUMBER 179970
METRIC

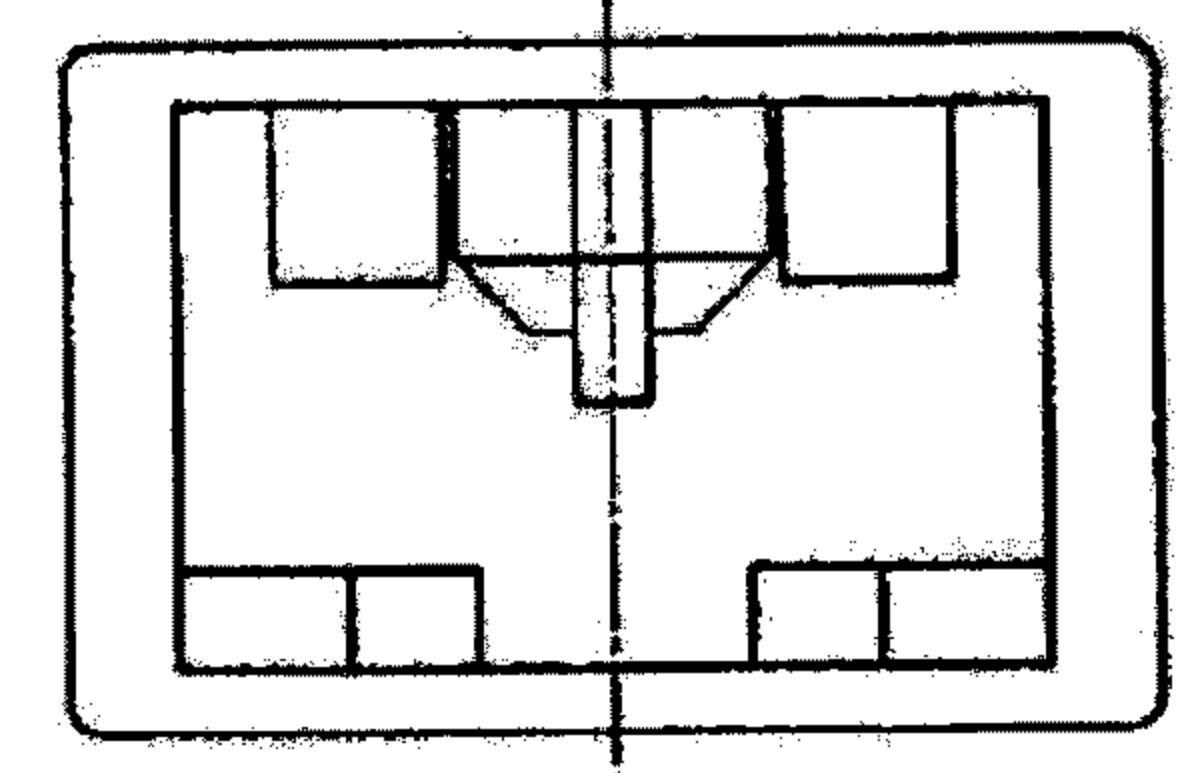
PRINT DIMENSIONS IN MM. DO NOT SCALE PRINT

PRINT DIST

4 3 2 1



断面 "A"- "A"
SECT.



注記:

1. 適用製品規格 : 108-5437
2. 適用コンタクト型番 : 179973-0 , 179974-0 , 179975-0
4. 取扱説明書 : 411-5691

NOTES:

1. PRODUCT SPEC; 108-5437
 2. APPLICABLE CONTACT P/N 179973-0 , 179974-0 , 179975-0
 3. INSTRUCTION SHEET; 411-5691
- △ COMPLY WITH GLOW WIRE REQUIREMENT FOR PARTS OF NON-METALLIC MATERIAL SUPPORTING A CURRENT - CARRYING CONNECTION DETAILED IN IEC 60335-1, SECTION 30 (GWT)
- △ PRELIMINARY- NOT FOR PRODUCTION

自然色 (NATURAL)	△△7-179970-1
黒 (BLACK)	179970-9
青 (BLUE)	179970-6
黄 (YELLOW)	179970-4
赤 (RED)	179970-2
自然色 (NATURAL)	179970-1
色調 (COLOR)	型番 (P/N)

B5	REVISED ECR-13-000284	L.L	F.M	08JAN 2013
B4	REVISED ECR-12-018436	L.L	F.M	23OCT 2012
B3	REVISED	K.S	N.Y	15JUN 2012
LTR	変更 (REVISION RECORD)	DR	CHK	DATE

TE Connectivity		
絶縁電線径範囲 (WIRE RANGE) mm ² (AWG -)	絶縁外径 (INSULATION DIA.) 4.3 MAX mmφ	名称 (NAME) "250" SERIES POSITIVE LOCK-EX-II 1Pos REC HSG "250"シリーズ・ポジティブロック-EX-II極リセ・ハウジング
材料 (MATERIAL) 6/6ナイロン 6/6NYLON	仕上 (FINISH)	一般公差 (GENERAL TOLERANCES) 10mm以下 : ±0.2 10mm以上 30mm以下 : ±0.25 30mm以上 100mm以下 : ±0.3 角度 : ±3°
DR. 30. JUN. '94 N. NAGASHIMA	DE. 4. JUL. '94 M. SUZUKI	LOD 番号 (No.) 179970
CHK. 4. JUL. '94 M. SHINDO	APP. 4. JUL. '94 Y. KASHIWA	尺度 (SCALE) 5:1
		REV. B5 SHEET 1 OF 1

(CUSTOMER DRAWING) 参 考 面

Mouser Electronics

Authorized Distributor

Click to View Pricing, Inventory, Delivery & Lifecycle Information:

[TE Connectivity:](#)

[7-179970-1](#)