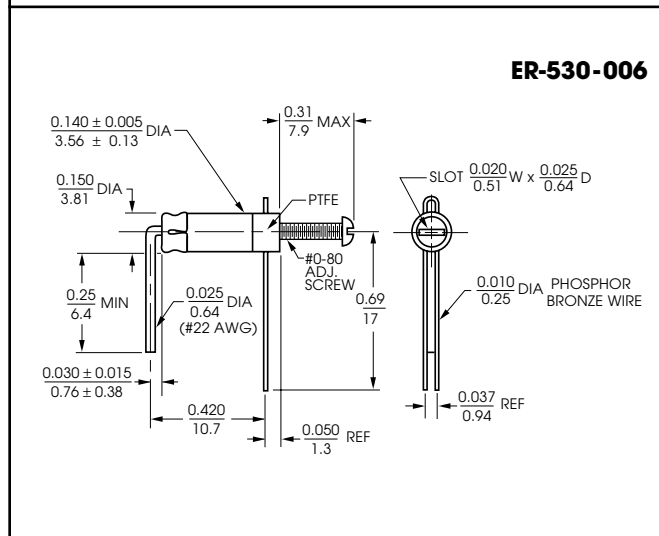
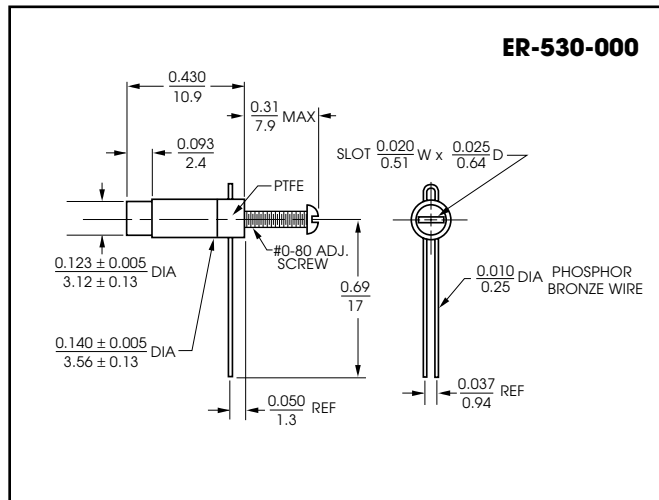
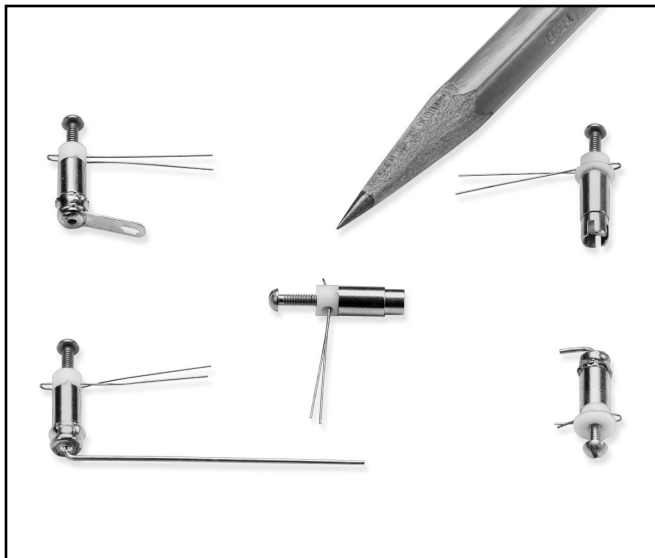


## MULTITURN PTFE DIELECTRIC TRIMMER CAPACITORS



### FEATURES

These trimmer capacitors combine the outstanding electrical properties of PTFE with nonferrous metal parts to provide:

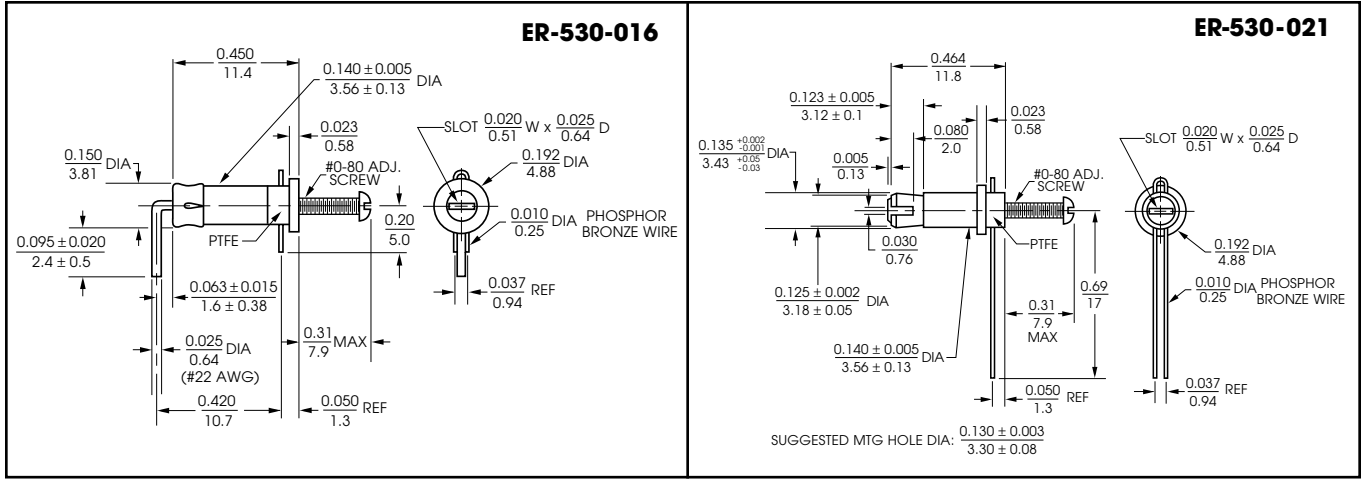
- High Q
- High DWV
- High IR
- Excellent Conductivity
- Corrosion Resistance
- Low  $\Delta C$ /Turn Ratio
- Excellent Stability

### SPECIFICATIONS

Capacitance Range .....	0.25 to 1.5 pF
Rated Voltage at 25°C:	
ER-530-000, -006, -016 .....	1250 VDC
ER-530-021 .....	1700 VDC
Dielectric Withstanding Voltage at 25°C:	
ER-530-000, -006, -016 .....	2500 VDC
ER-530-021 .....	3400 VDC
Operating Temperature Range .....	-55° to +125°C
Q min at 1 MHz .....	2000
Insulation Resistance .....	1 teraohm at 25°C
TCC .....	50 ± 50 ppm/°C
Torque .....	0.2 to 3.0 oz-in (14.4 to 216 g-cm)

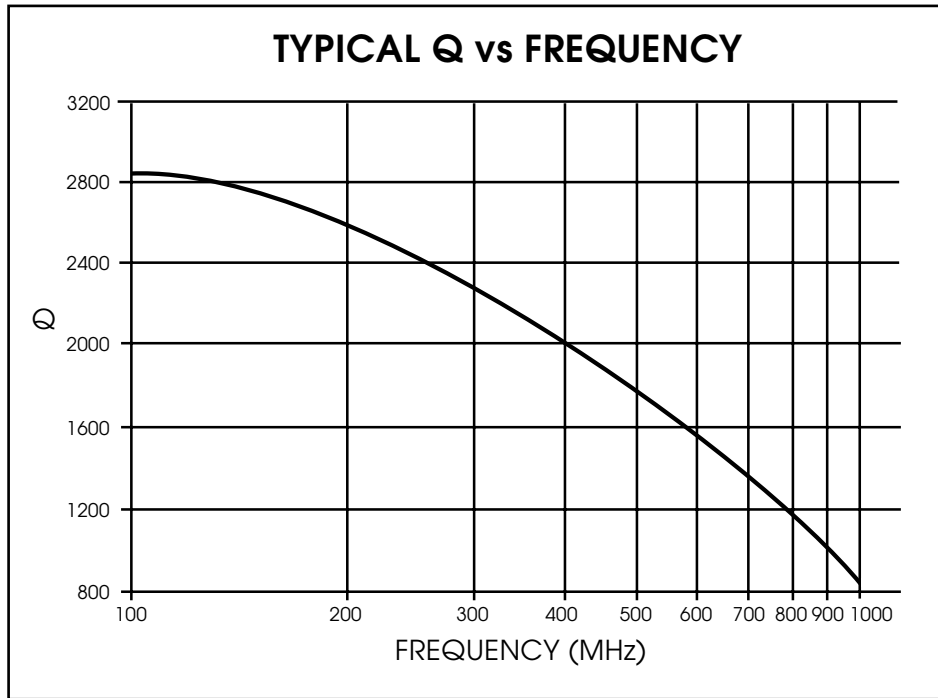
All dimensions are in / mm.

Tolerance is ± 0.005/0.13 for dimensions of 0.110/2.79 or less, and ± 0.031/0.79 for dimensions greater than 0.110/2.79, unless otherwise specified.



All dimensions are in /mm.

Tolerance is  $\pm 0.005/0.13$  for dimensions of  $0.110/2.79$  or less, and  $\pm 0.031/0.79$  for dimensions greater than  $0.110/2.79$ , unless otherwise specified.



# Mouser Electronics

Authorized Distributor

Click to View Pricing, Inventory, Delivery & Lifecycle Information:

[Sprague Goodman:](#)

[ER530-000](#) [ER-530-001](#) [ER-530-006](#) [ER-530-021](#) [ER-530-016](#)