

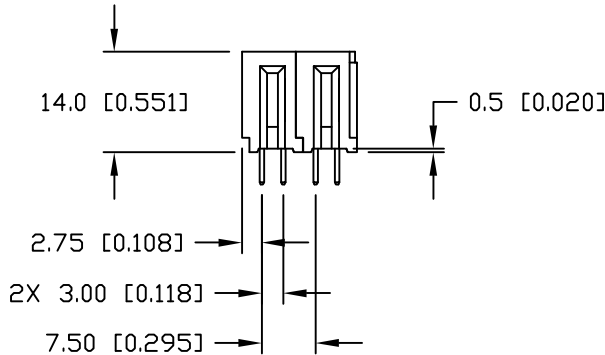
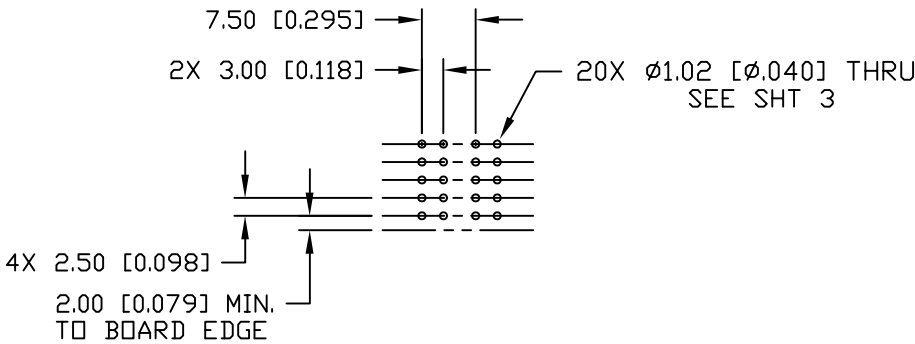
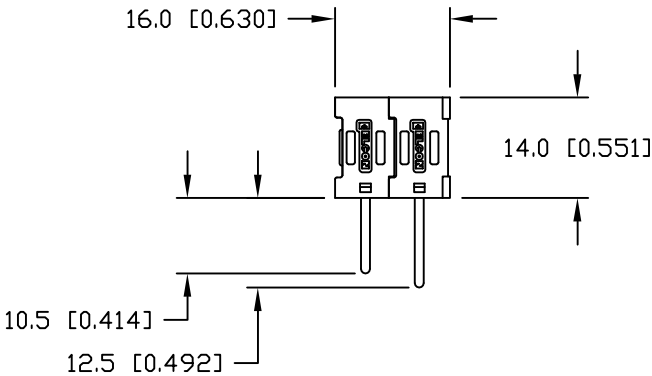
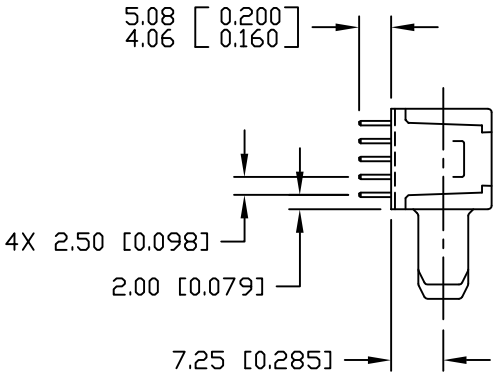
A

A

<div> <div> <div>MM INCH</div> <div>OR MM [INCH]</div> </div> <div> </div> <div>THIRD ANGLE PROJECTION</div> </div>		<div> <div>DRAWN</div> <div>R. F. A.</div> </div>		<div> <div>DATE</div> <div>06/15/05</div> </div>		<div> <div>tyco Electronics</div> <div>Tyco Electronics Corporation Menlo Park, Ca 94025</div> </div>		<div> <div>ELCON</div> </div>				
<div>UNLESS OTHERWISE SPECIFIED DIMENSIONS ARE IN METRIC [INCHES]</div>		<div>CHECKED</div>				<div>TITLE</div>						
<div>TOLERANCES</div>		<div>APPROVED</div>				<div>CONNECTOR, PIN, RIGHT ANGLE STANDARD SOLDER TAILS, FLATPAQ PN 1766688-1</div>						
<div>ANGLES ± .5°</div>		<div>APPROVED</div>				<div>SIZE</div>		<div>DWG NUMBER</div>		<div>REV.</div>		
<div>DECIMALS</div>		<div>D. CHAU</div>		<div>06/15/05</div>		<div>B</div>		<div>C = 1766688</div>		<div>A</div>		
<div>.XX ± .25 [.010]</div>		<div>DCA APPROVED</div>										
<div>.X ± .5 [.020]</div>		<div>M. ALIM</div>		<div>06/16/05</div>								
<div>ACAD FILE NUMBER</div>						<div>C1766688A.DWG</div>			<div>DWG SCALE 1 = 1</div>		<div>SH 1 OF 3</div>	

This drawing involves proprietary design rights of Tyco Electronics Corporation, and all design, manufacture, reproduction, use and sale rights regarding the same are expressly reserved. It is submitted for a specific purpose and the recipient by accepting this drawing, assumes custody and control and agrees to take reasonable precautions; (a) that this drawing will not be copied and reproduced, in whole or in part, or its contents revealed in any manner, or to any person except to meet the purpose for which it was delivered and (b) that any special features peculiar to this design will not be incorporated in other projects without the expressed written permission of Tyco Electronics Corporation.

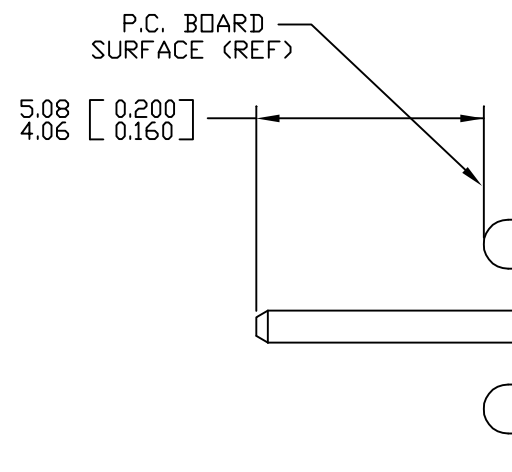
REVISIONS			
EC	REV	DESCRIPTION	DATE
		SEE SHEET 1	



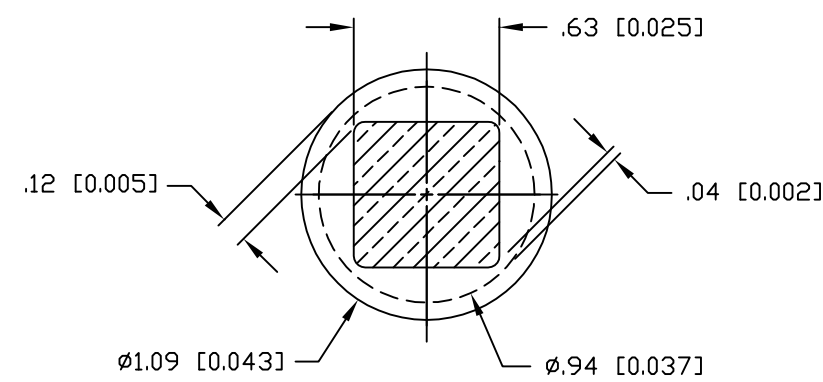
PRINTED CIRCUIT LAYOUT

<div>← MM INCH → OR MM [INCH]</div> <div>THIRD ANGLE PROJECTION</div> <div>UNLESS OTHERWISE SPECIFIED DIMENSIONS ARE IN METRIC [INCHES]</div> <div>TOLERANCES</div> <div>ANGLES ± .5°</div> <div>DECIMALS</div> <div>.XX ± .25 [.010]</div> <div>.X ± .5 [.020]</div>	DRAWN R. F. A.	DATE 06/15/05	<div>tyco Tyco Electronics Corporation Electronics Menlo Park, Ca 94025</div> <div>ELCON</div> <div>TITLE</div> <div>CONNECTOR, PIN, RIGHT ANGLE STANDARD SOLDER TAILS, FLATPAQ PN 1766688-1</div>	
	CHECKED			
	APPROVED			
	APPROVED D. CHAU	06/15/05	SIZE B	DWG NUMBER C = 1766688
ACAD FILE NUMBER C1766688A.DWG		DWG SCALE 1 = 1		REV. A
			SH 2 OF 3	

This drawing involves proprietary design rights of Tyco Electronics Corporation, and all design, manufacture, reproduction, use and sale rights regarding the same are expressly reserved. It is submitted for a specific purpose and the recipient by accepting this drawing, assumes custody and control and agrees to take reasonable precautions; (a) that this drawing will not be copied and reproduced, in whole or in part, or its contents revealed in any manner, or to any person except to meet the purpose for which it was delivered and (b) that any special features peculiar to this design will not be incorporated in other projects without the expressed written permission of Tyco Electronics Corporation.



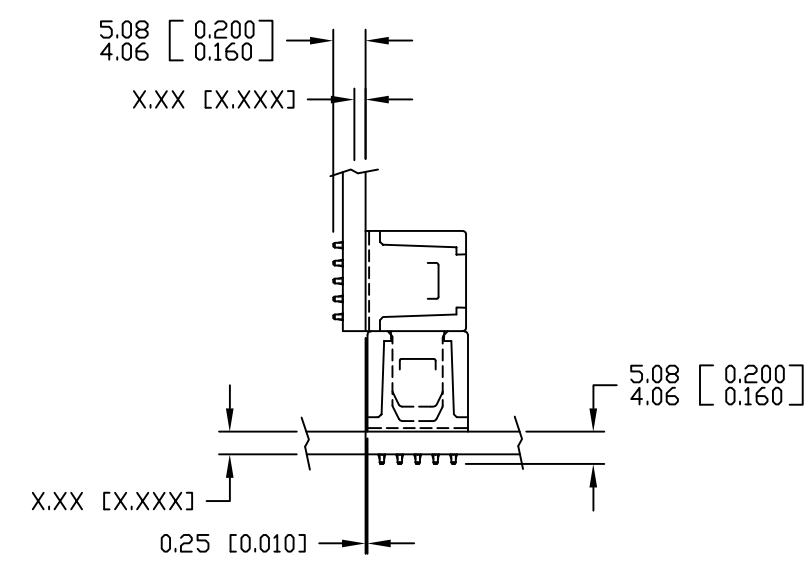
SOLDER PIN DETAIL



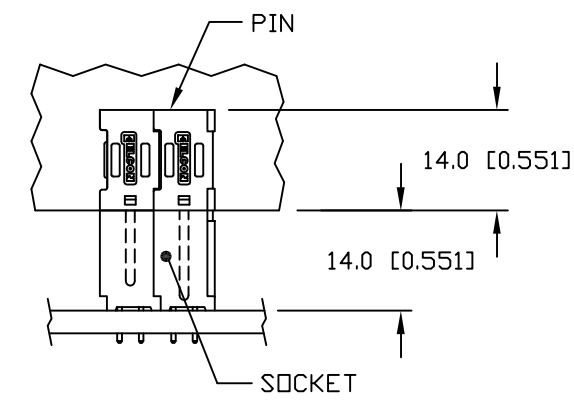
SOLDER TERMINATION AREA

RECOMMENDED PRINTED CIRCUIT HOLE

- FINISHED HOLE: Ø1.02 [0.040] ±.08 [0.003]
- DRILLED HOLE: Ø1.15 [0.0453] ±.013 [0.0005]
- COPPER PLATE: .025 [0.0010] MINIMUM (PER SURFACE)
- TIN PLATE: .008 [0.0003] MINIMUM (PER SURFACE)



MATED CONDITION



<div>MM INCH</div> <div>OR MM [INCH]</div> <div>THIRD ANGLE PROJECTION</div> <div>UNLESS OTHERWISE SPECIFIED DIMENSIONS ARE IN METRIC [INCHES]</div> <div>TOLERANCES</div> <div>ANGLES ± .5°</div> <div>DECIMALS</div> <div>.XX ± .25 [.010]</div> <div>.X ± .5 [.020]</div>	DRAWN R. F. A.	DATE 06/15/05	<div>tyco Tyco Electronics Corporation Menlo Park, Ca 94025</div> <div>ELCON</div>	
	CHECKED		TITLE	
	APPROVED		USER INFORMATION SOLDER TAIL TERMINATION AND MATED CONDITION	
	APPROVED D. CHAU	06/15/05	SIZE B	DWG NUMBER C = 1766688
	DCA APPROVED M. ALIM	06/16/05	REV. A	
ACAD FILE NUMBER C1766688A.DWG		DWG SCALE 1 = 1		SH 3 OF 3

Mouser Electronics

Authorized Distributor

Click to View Pricing, Inventory, Delivery & Lifecycle Information:

[TE Connectivity:](#)

[1766688-1](#)