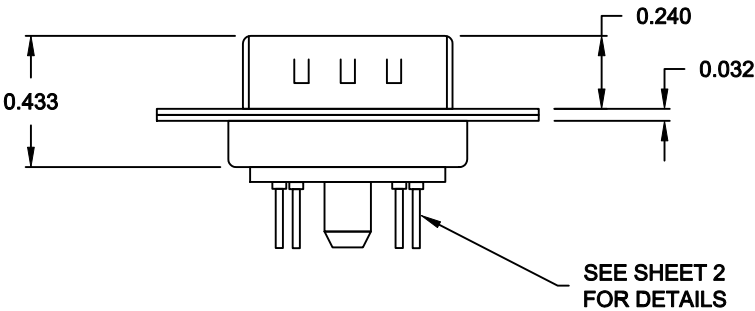
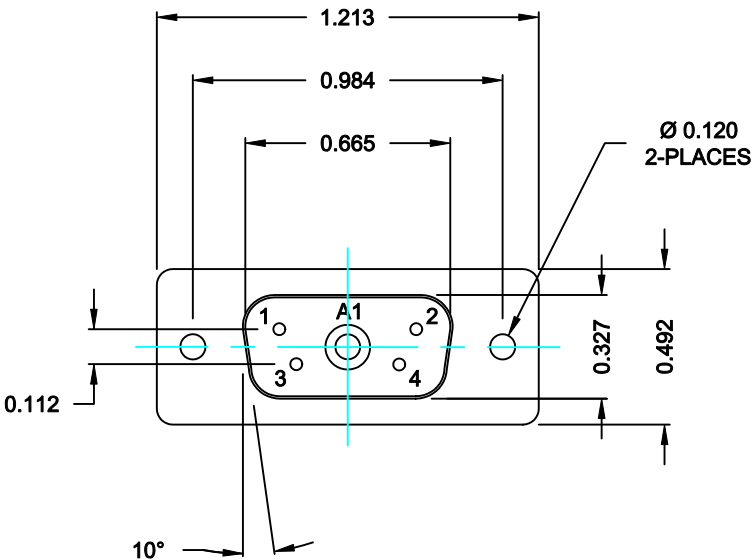


SPECIFICATIONS:

|                            |   |
|----------------------------|---|
| <b>ELECTRICAL:</b>         |   |
| INSULATOR RESISTANCE:      | 5 G OHMS Min.                                 |
| DIELECTRIC WITHSTANDING:   | 1,000VAC r.m.s.                               |
| OPERATING TEMPERATURE:     | -55° C ~ +155° C                              |
| POWER CONTACT RESISTANCE:  | 1.0 Milliohms Max.                            |
| SIGNAL CONTACT RESISTANCE: | 2.7 Milliohms Max.                            |
| POWER PINS:                | 40 AMPS                                       |
| SIGNAL PINS:               | 5 AMPS  |
| <b>MECHANICAL:</b>         |   |
| CONTACT INSERTION FORCE:   | 4.5 Kg Max.                                   |
| CONTACT SEPARATOR FORCE:   | 0.3Kg Min.                                    |
| <b>MATERIALS:</b>          |   |
| CONTACTS:                  | COPPER ALLOY                                  |
| INSULATOR:                 | PBT UL94V-0 RATED, BLK<br>230°C PROCESS TEMP. |
| SHELL:                     | STEEL   |
| SEAL:                      | F08 FLEXIBLE ADHESIVE                         |
| <b>FINISH:</b>             |   |
| SHELL:                     | NICKEL  |
| CONTACTS:                  | FULL GOLD FLASH                               |




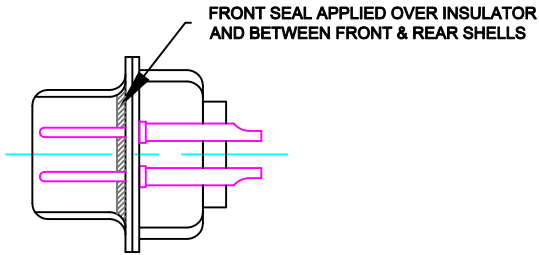
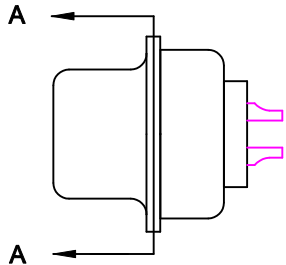
681S5W1103L001

00 = 20 / 40 AMPS

MEETS IP67 STANDARDS  
(SEE PAGE 2 FOR SEALING DETAILS)

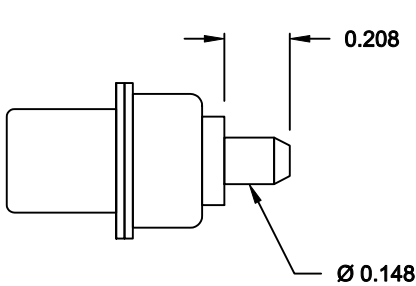
RoHS COMPLIANT

|  |   |                            |                                  |                          |                 |
|--|---|----------------------------|----------------------------------|--------------------------|-----------------|
|  | THESE DRAWINGS AND SPECIFICATIONS ARE THE PROPERTY OF NorComp AND SHALL NOT BE REPRODUCED, COPIED OR USED AS THE BASIS FOR THE MANUFACTURE OF SALE OF APPARATUS WITHOUT WRITTEN PERMISSION. | DRAWN:<br><b>M. SIGMON</b> |                                  | DATE:<br><b>06-11-13</b> |                 |
|  |   | CHECKED:<br><b>X</b>       |                                  | DATE:<br><b>X</b>        |                 |
| <b>NorComp</b>   | SCALE:<br><b>N.T.S.</b>   |                            | SHEET<br><b>1</b> OF<br><b>2</b> |                          | REV<br><b>0</b> |
|  | DWG NO.<br><b>681S5W1103L001</b>  |                            |                                  |                          |                 |

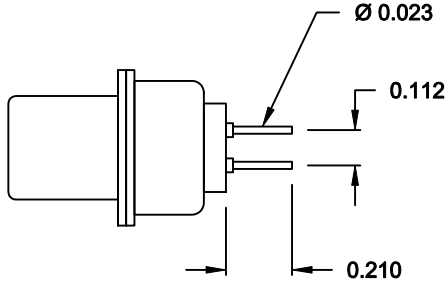


DETAIL A-A  
SHOWN FOR REFERENCE ONLY

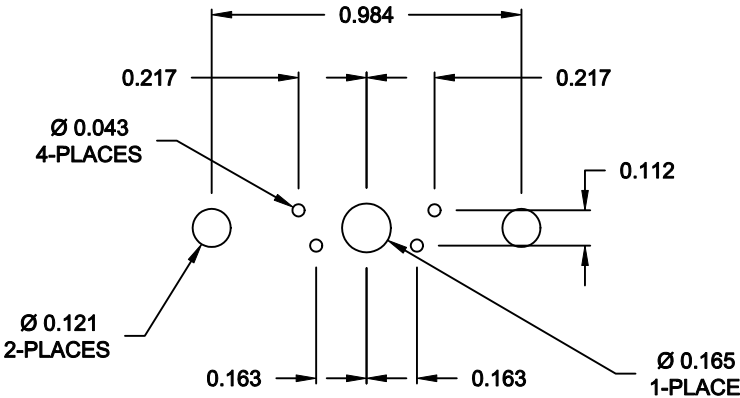
NOTE:  
SIGNAL AND POWER CONTACTS  
COME PRE-LOADED INTO INSULATORS



POWER CONTACTS



SIGNAL CONTACTS



RECOMMENDED PCB LAYOUT

RoHS COMPLIANT



THESE DRAWINGS AND SPECIFICATIONS  
ARE THE PROPERTY OF NorComp AND  
SHALL NOT BE REPRODUCED, COPIED  
OR USED AS THE BASIS FOR THE  
MANUFACTURE OF SALE OF APPARATUS  
WITHOUT WRITTEN PERMISSION.

DRAWN:  
**M. SIGMON**

DATE:  
**06-11-13**

CHECKED:  
**X**

DATE:  
**X**

SCALE:  
**N.T.S.**

SHEET  
**2** OF  
**2**

REV  
**0**

DWG NO. **681S5W1103L001**

**NorComp**

# Mouser Electronics

Authorized Distributor

Click to View Pricing, Inventory, Delivery & Lifecycle Information:

[NorComp:](#)

[681S5W1103L001](#)