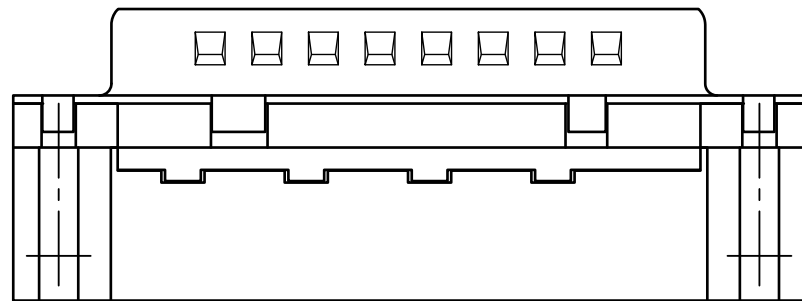
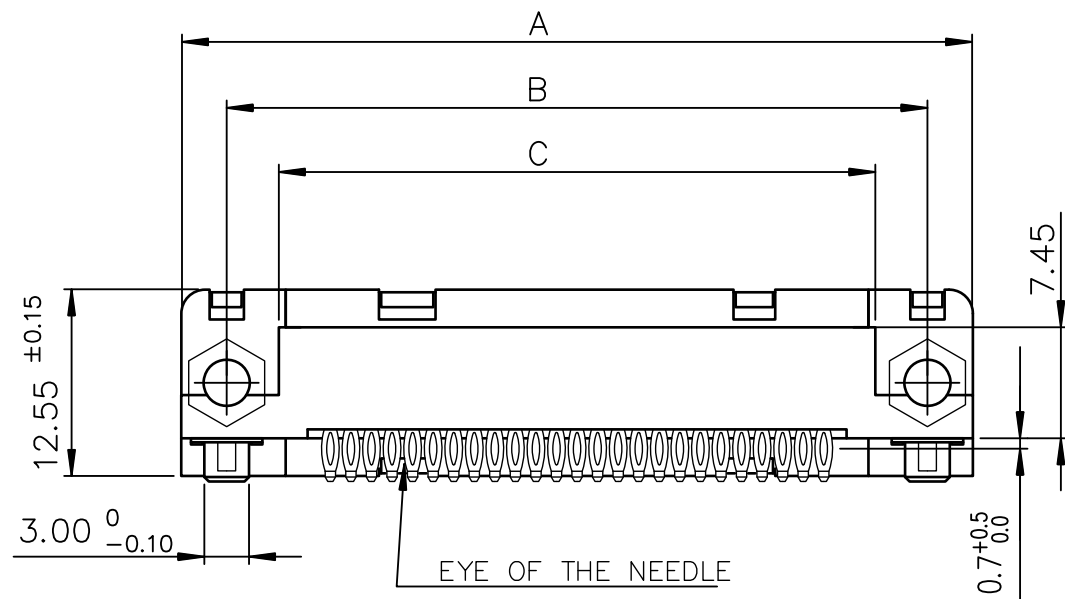




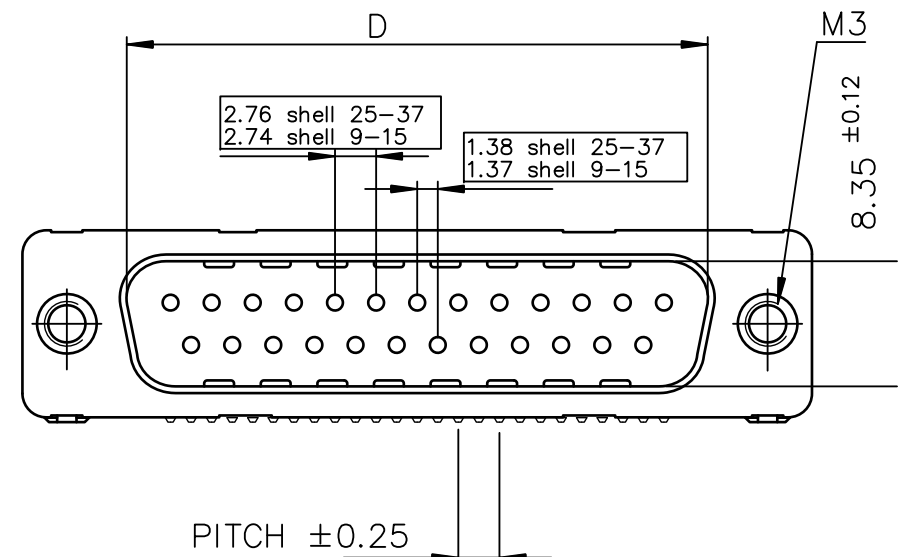
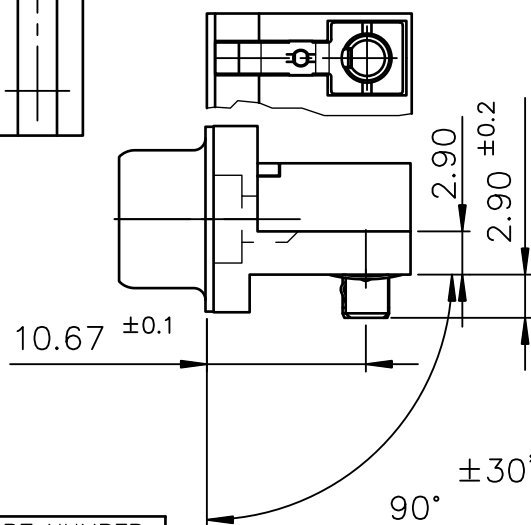
FCIconnect.com

Copyright FCI

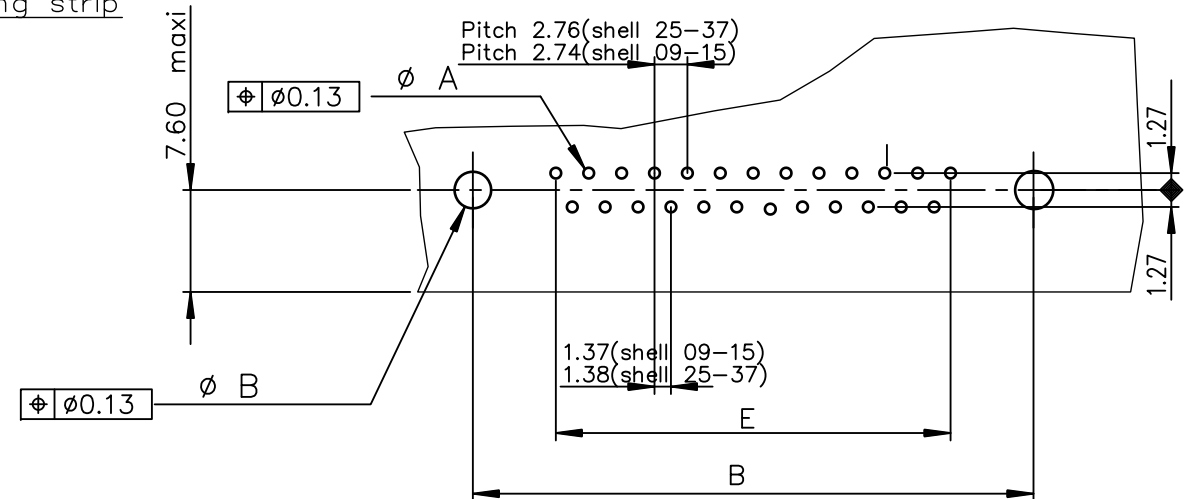
form: A3



Detail of grounding strip



PC card drilling dimensions(after plating)  
(thickness 1.60 or 2.40±0.20mm)



TIN LEAD PART NUMBER

SHELL	A±0.38	B±0.12	C±0.10	D +0.25 0	E±0.07	G	PART NUMBER	PART NUMBER
09	30.81	24.99	18.00	16.79	10.96	5.90 +0.15 0	D09P82C4GL00	D09P82C6GL00
15	39.14	33.32	26.32	25.12	19.18	5.90 +0.15 0	D15P82C4GL00	D15P82C6GL00
25	53.03	47.04	40.04	38.84	33.12	5.70 +0.25 0	D25P82C4GL00	D25P82C6GL00
37	69.32	63.50	56.50	55.30	49.68	5.70 +0.25 0	D37P82C4GL00	D37P82C6GL00
Gold flash							0.76 µ gold	

LEAD FREE PART NUMBER

SHELL	A±0.38	B±0.12	C±0.10	D +0.25 0	E±0.07	G	PART NUMBER	PART NUMBER
09	30.81	24.99	18.00	16.79	10.96	5.90 +0.15 0	D09P82C4GL00LF	D09P82C6GL00LF
15	39.14	33.32	26.32	25.12	19.18	5.90 +0.15 0	D15P82C4GL00LF	D15P82C6GL00LF
25	53.03	47.04	40.04	38.84	33.12	5.70 +0.25 0	D25P82C4GL00LF	D25P82C6GL00LF
37	69.32	63.50	56.50	55.30	49.68	5.70 +0.25 0	D37P82C4GL00LF	D37P82C6GL00LF
Gold flash							0.76 µ gold	

## GENERAL CHARACTERISTICS AND ROHS INFORMATIONS:

SEE DRAWING C01-8646-0001

mat'l. code				surface	tolerance	projection	product family		
-				ISO 1302	ISO 406 ISO 1101		D-SUB		
ltr	ecn no	dr	date	tolerances unless otherwise specified		MM	title		
G	ELX-I-18050	MP	2014/06/23	angles	linear				
				0°±2°					
						scale 2:1	dwg no		
				dr	PESSON	1995/08/07	sheet 1 of 1		
				engr	MITHUN PAUL	2014/06/23	C01-8646-0386		
				chr	ALIAS BABU	2014/06/23			
				appd	BIJU K PAUL	2014/06/23			
sheet index	revision sheet	G	1				type Product Customer Drawing		

PDS: Rev :G

STATUS:Released

Printed: Jul 04, 2014

# Mouser Electronics

Authorized Distributor

Click to View Pricing, Inventory, Delivery & Lifecycle Information:

[FCI / Amphenol:](#)

[D09P82C4GL00LF](#) [D09P82C6GL00LF](#) [D15P82C6GL00LF](#) [D37P82C6GL00LF](#) [D25P82C6GL00LF](#) [D09P82C4GL00](#)  
[D09P82C6GL00](#) [D15P82C6GL00](#) [D37P82C6GL00](#)