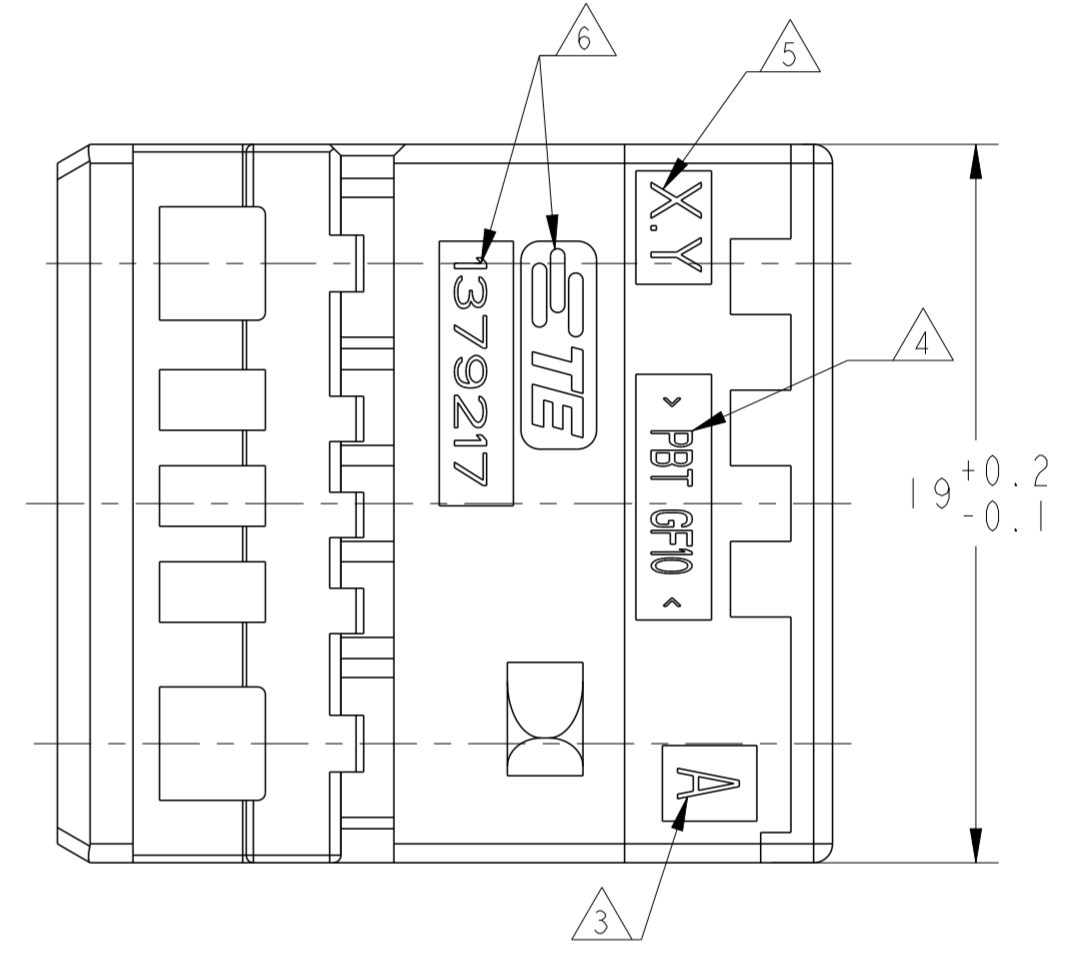
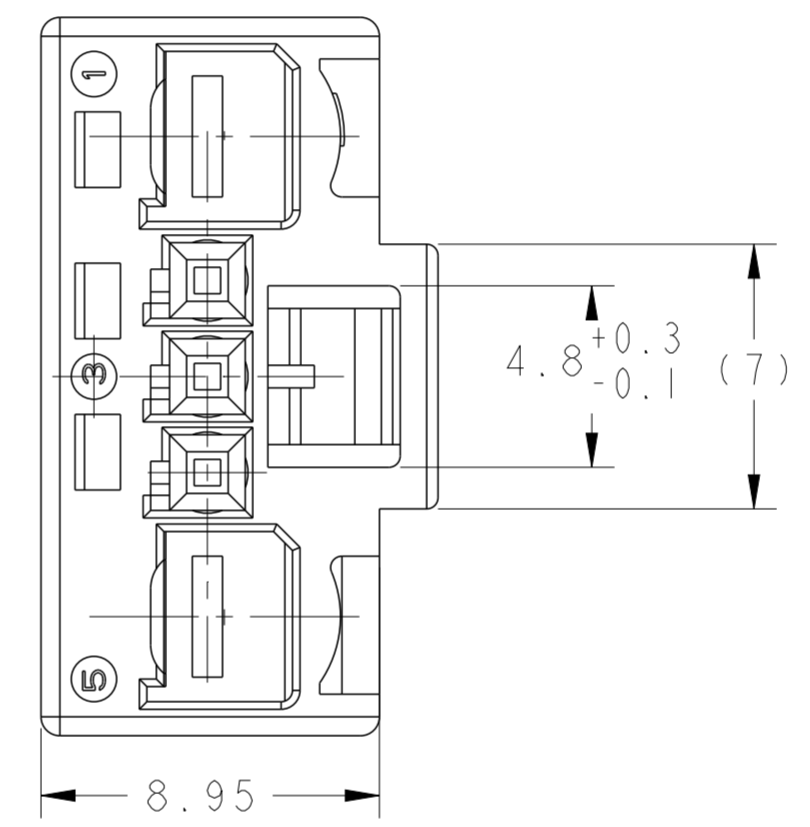
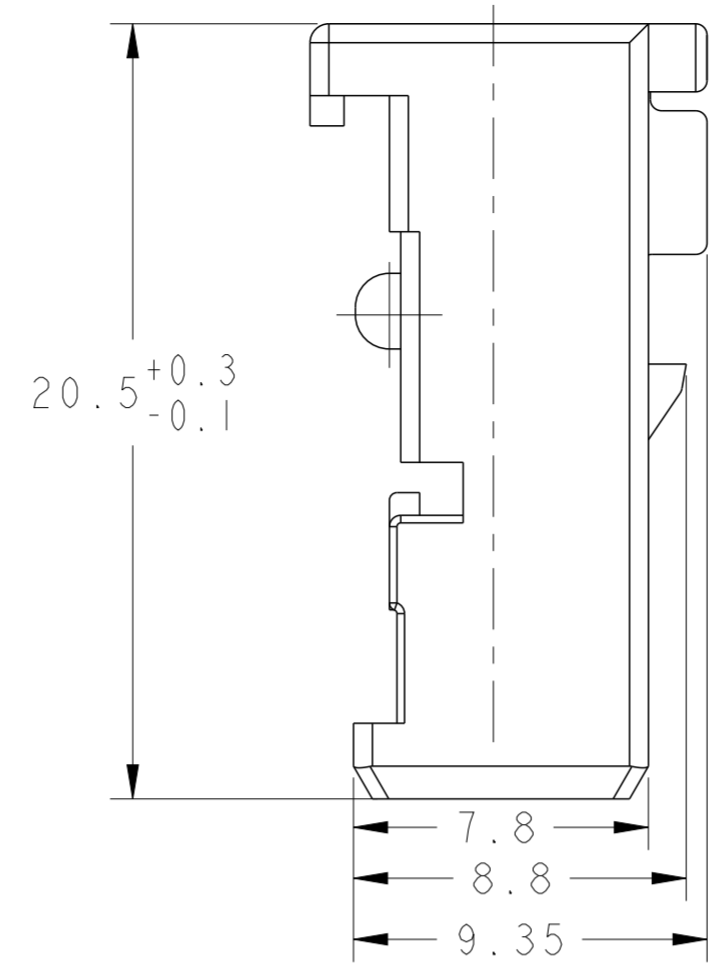
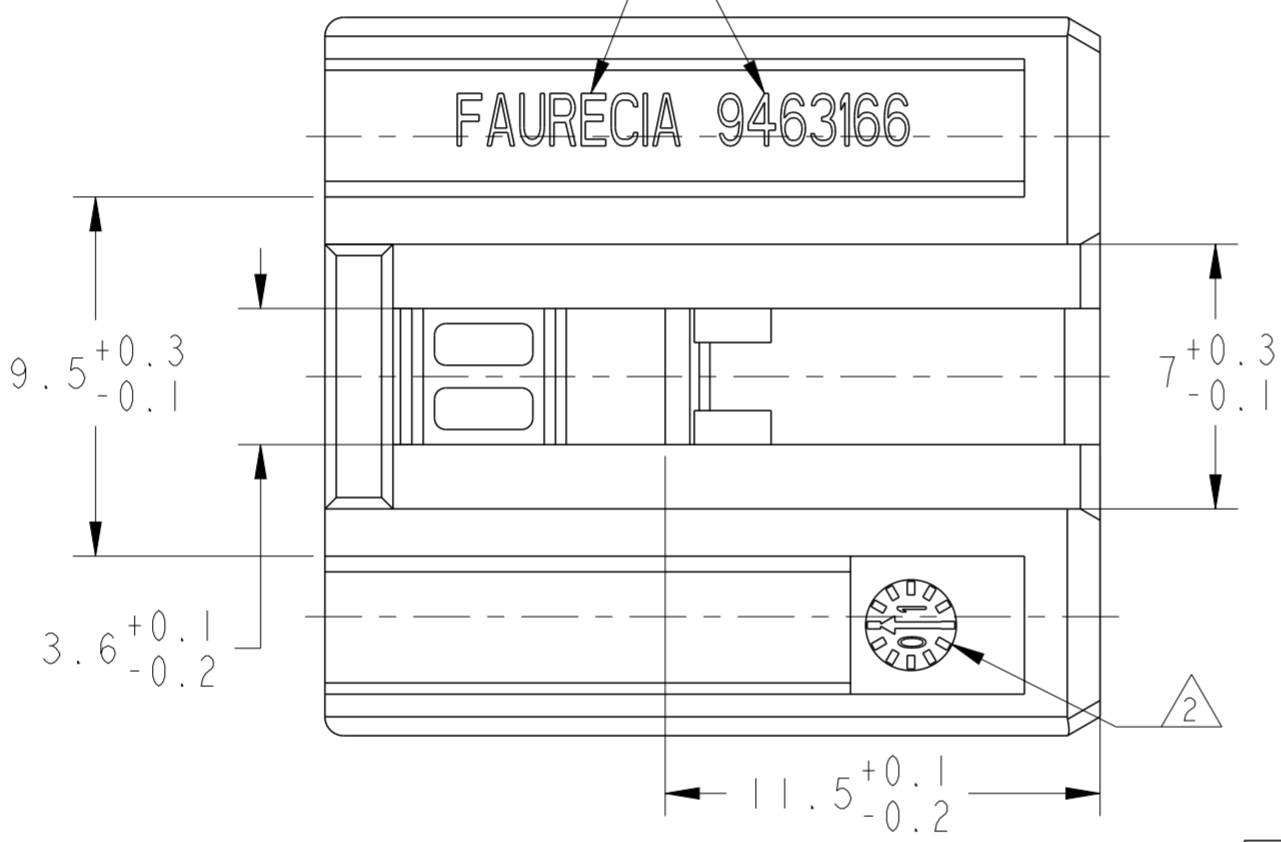
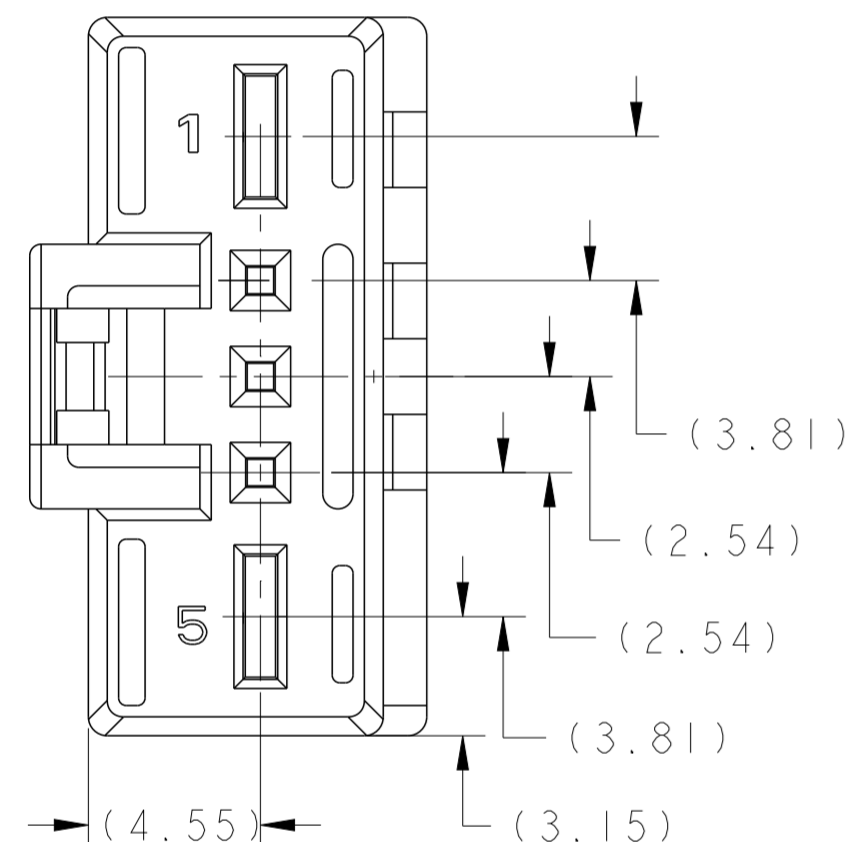
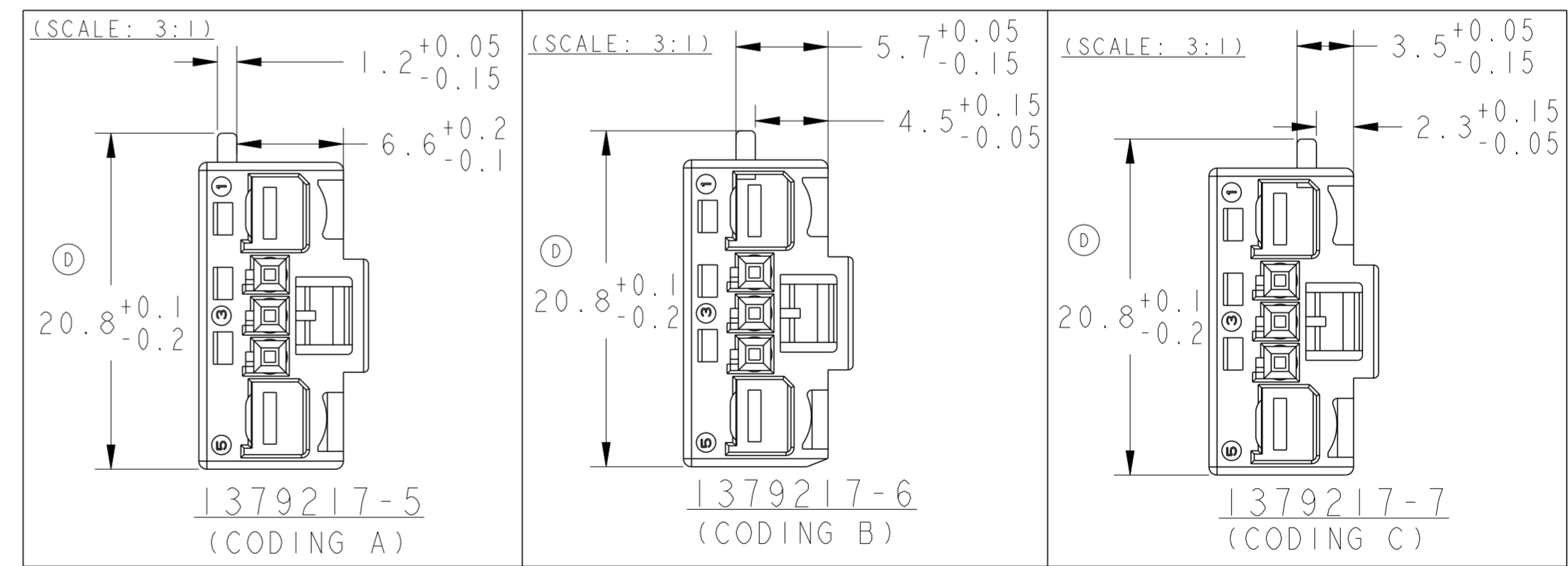


- NOTES:
- 1 AREA FOR OPTIONAL CUSTOMER NAME & PART NUMBER
ZONE POUR NOM & REFERENCE CLIENT OPTIONNELS
 - 2 CODING DATE
DATE CODE
 - 3 REVISION STATUT OF THE MOLD
REVISION DU MOULE
 - 4 MATERIAL IDENTIFICATION
MARQUAGE DE MATIERE
 - 5 CAVITY MARKING
NUMERO D' EMPREINTE DU MOULE
 - 6 LOGO & P/N OF TE (AMP)
LOGO & REFERENCE DE TE (AMP)
 - 7 MUST BE USED WITH COVER PN 1379218-1 OR -2
DOIT ETRE UTILISE AVEC LE COUVERCLE 1379218-1 OU -2
 - 8 FOR THE CONNECTOR INTERFACE, SEE THE DRW OF P/N 208-15621
POUR L' INTERFACE DE CONNECTEUR, VOIR PLAN DE REF. 208-15621
 - 9 CAVITY 1 & 5 SUITABLE TO WIRE SIZE RANGE 0.75 TO 2.5 mm²
ALVEOLES 1 & 5 ADAPTEES AUX JAUGES DE FILS 0.75 A 2.5 mm²
 - 10 CAVITY 2,3,4 SUITABLE TO WIRE SIZE RANGE 0.25 TO 0.5 mm²
ALVEOLES 2,3,4 ADAPTEES AUX JAUGES DE FILS 0.25 A 0.5 mm²

REVISIONS					
P	LTR	DESCRIPTION MODIFICATIONS	DATE	DWN DESS.	APVD APP.
C		ADD THE NEW P/NS : 1379217-5/-6/-7	15DEC2004	NT.N	J.L
D		UP DATE THE DRAWING	17FEB2005	NT.N	J.L
D1		REVISED PER ECO-11-005150	20APR11	RK	HMR
D2		ECR-15-017891	14DEC2015	KCD	SA



1379217-7	-	BLUE (BLEU) (D)	C	
1379217-6	-	WHITE (BLANC)	B	
1379217-5	-	BLACK (NOIR)	A	
1379217-4		WHITE (BLANC)	NEUTRAL (NEUTRE)	FAURECIA (A)
1379217-3		BLACK (NOIR)		
1379217-2	9463166-2	WHITE (BLANC)		
1379217-1	9463166-1	BLACK (NOIR)		
TE P/N (REF. TE)	FAURECIA P/N (REF. FAURECIA)	COLOR (COULEUR)	CODING (DETROMPAGE)	PART NUMBER RESTRICTED ONLY TO (REFERENCE RESERVEE UNIQUEMENT A)



THIS DRAWING IS A CONTROLLED DOCUMENT. / CE PLAN EST UN DOCUMENT CONTROLE PAR TYCO ELECTRONICS. IL EST SUSCEPTIBLE D'ETRE REVISE. CONTACTER LE SERVICE TECHNIQUE DE TYCO ELECTRONICS POUR OBTENIR LA DERNIERE REVISION.

APVD / APPROUVE: NT.NGUYEN (22FEB2001), J.LAQUERBE (27JUN2001), S.KUGENER (27JUN2001)

PRODUCT SPEC: 108-15315

APPLICATION SPEC: -

WEIGHT / MASSE APPROX.: 1.80g

CUSTOMER DRAWING / PLAN CLIENT

SCALE / ECHELLE: 5:1

SHEET / FEUILLE: 1 OF 1

REV: D2

Mouser Electronics

Authorized Distributor

Click to View Pricing, Inventory, Delivery & Lifecycle Information:

[TE Connectivity:](#)

[1379217-3](#)