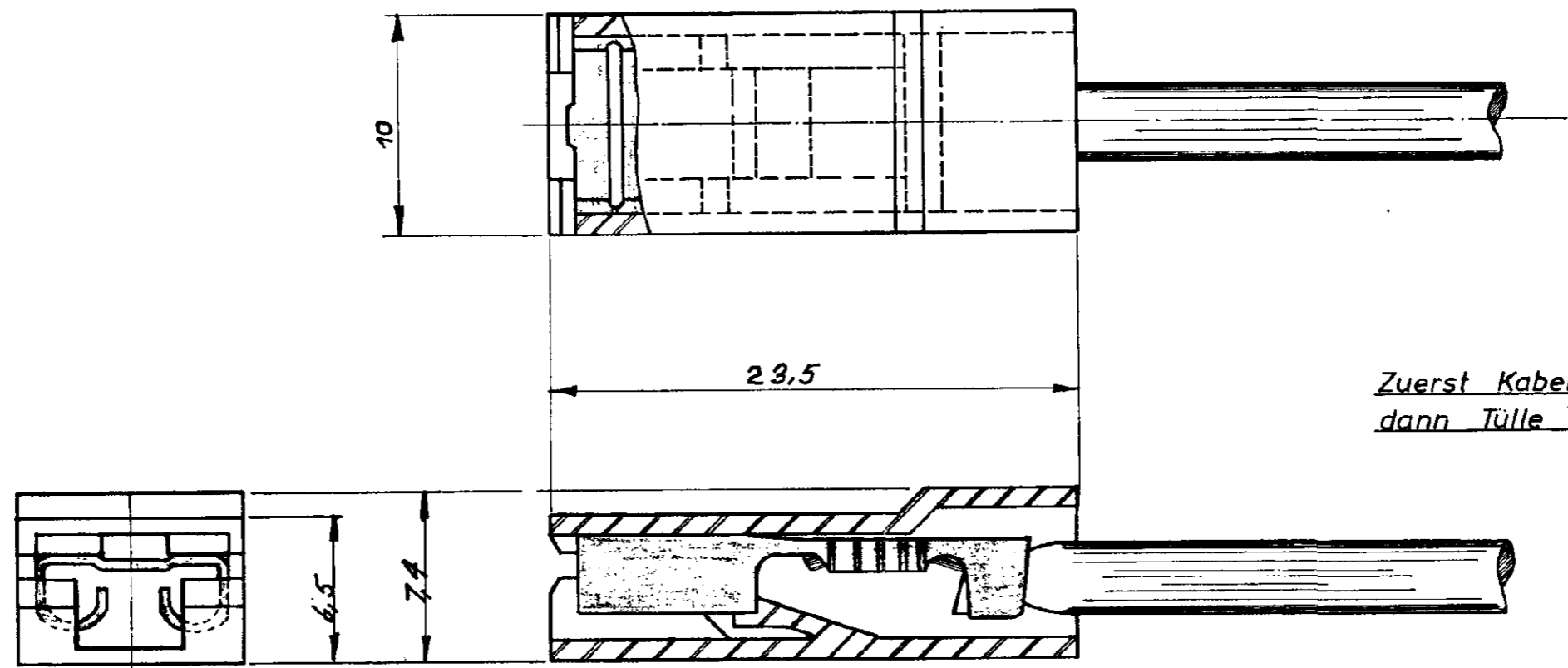


△	OBSOLETE	925-068-3	Thermopl. Polyester	natur	UL 94 V-0
	OBSOLETE	925-068-2	Polyamid 6.6	schwarz	UL 94 V-2



Zuerst Kabelschuh anschlagen,
dann Tülle aufstecken.

Zeichnung geschützt durch
© Copyright 1967
TEAMP DEUTSCHLAND GmbH
Alle Rechte vorbehalten

△ OBSOLETE PARTS: OBSOLETE CIS STREAMLINING PER D.RENAUD/D.SINISI

△	OBSOLETE	925-068-1	Polypropylen (PPH)	natur	UL 94 V-2
		925-068-0	Polyamid 6.6	natur	
		Nummer	Werkstoff	Farbe	

American Projection

LTR	REVISION RECORD	DR	CHK	DATE
C2	ECR-10-026307	KK	HMR	11FEB11
C1	REVISED PER ECO-09-026444	KK	AEG	NOV09
C	-3 Thermopl. Polyester	KK		4-77
B	-1 Polypropylen added	KK		10/74
A	DIMENSION	KK		7-67

NUMBER	REQUIRED PER ASSEMBLY	DESCRIPTION

© 1967 BY TE INCORPORATED. ALL RIGHTS RESERVED.
TE PRODUCTS COVERED BY PATENTS AND/OR PATENTS PENDING.

CUSTOMER COPY REFERENCE ONLY

DR 1-6-67 Kuhlmann

CHK

DE

MATERIAL AND FINISH

TE TE Connectivity

CLASS

WIRE - RANGE - INSULATION

TYPE

TOLERANCE EXCEPT AS NOTED ± .015 ± 1° 0'

SCALE 4:1

LOC A1

NO B

NO 925058

REV C2

NAME ISOLIERTÜLLE FÜR .250 SERIE FASTON

TOLERANZ ± 0,2 mm

DIMENSIONS IN INCHES. DO NOT SCALE PRINT.

PRINT DIST

Mouser Electronics

Authorized Distributor

Click to View Pricing, Inventory, Delivery & Lifecycle Information:

[TE Connectivity:](#)

[925068](#)