

**PLEASE CHECK WWW.MOLEX.COM FOR LATEST PART INFORMATION**

**Part Number:** [0438100100](#)  
**Status:** **Active**  
**Overview:** Mini-Fit BMI Connectors  
**Description:** Mini-Fit BMI Header, Dual Row, Right-Angle, for 3.18mm PCB, 4 Circuits, Gold (Au) Plating, 260C Wave Solderable, with Retention Clip

**Documents:**

<a href="#">3D Model</a>	<a href="#">Product Specification PS-45750-001-001 (PDF)</a>
<a href="#">Drawing (PDF)</a>	<a href="#">Packaging Specification PK-43810-001-000 (PDF)</a>
<a href="#">Product Specification PS-43810-001-001 (PDF)</a>	<a href="#">RoHS Certificate of Compliance (PDF)</a>

**Agency Certification**

CSA	LR19980
UL	E29179

**General**

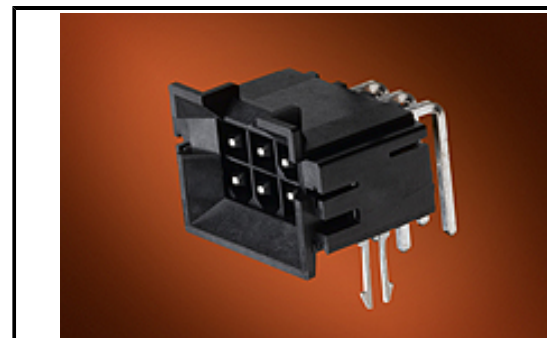
Product Family	PCB Headers
Series	<a href="#">43810</a>
3D Viewer	Yes
Application	Board-to-Board, Power, Wire-to-Board
CURRENT-MAX-NUMERIC	13.0
Comments	Current = 13A max. per circuit when header is mated to a receptacle loaded with <a href="#">45750</a> Mini-Fit Plus HCS Crimp Terminal Crimped to 16 AWG wire., See Molex product specification PS-45750-001 for additional current de-rating information.
Comments	Current = 13A max. per circuit when header is mated to a receptacle loaded with <a href="#">45750</a> Mini-Fit Plus HCS Crimp Terminal Crimped to 16 AWG wire., See Molex product specification PS-45750-001 for additional current de-rating information.

Overview

PITCH-MATING-NUMERIC	<a href="#">Mini-Fit BMI Connectors</a>
Product Name	4.20
UPC	Mini-Fit BMI
	800753294813

**Physical**

Breakaway	No
Circuits (Loaded)	4
Circuits (maximum)	4
Color - Resin	Black
Durability (mating cycles max)	30
Flammability	94V-0
Glow-Wire Capable	No
Material - Metal	Brass
Material - Plating Mating	Gold
Material - Plating Termination	Tin
Material - Resin	High Temperature Thermoplastic
Net Weight	3.659/g
Number of Rows	2
Orientation	Right Angle
PC Tail Length	4.50mm
PCB Locator	No
PCB Retention	Yes
PCB Thickness - Recommended	3.17mm
Packaging Type	Tray
Pitch - Mating Interface	4.20mm



Series image - Reference only

**EU ELV**

**Not Relevant**

**EU RoHS**

**Compliant**

**REACH SVHC**

Not Contained Per - ED/71/2019 (16 July 2019)

**Halogen-Free**

**Status**

**Not Low-Halogen**

For more information, please visit [Contact US](#)

China ROHS

ELV

RoHS Phthalates

Green Image

Not Relevant

Not Contained

**Search Parts in this Series**

[43810](#) Series

**Mates With**

[42385](#) , [42474](#) , [44475](#) , [44516](#) , [5557](#) Dual Row

Pitch - Termination Interface	4.20mm
Plating min - Mating	0.762µm
Plating min - Termination	2.540µm
Polarized to Mating Part	Yes
Polarized to PCB	Yes
Shrouded	Fully
Stackable	No
Surface Mount Compatible (SMC)	Yes
Temperature Range - Operating	-40° to +105°C
Termination Interface: Style	Through Hole

**Electrical**

Current - Maximum per Contact	13.0A
Voltage - Maximum	600V AC (RMS)/DC

**Solder Process Data**

Duration at Max. Process Temperature (seconds)	005
Lead-free Process Capability	WAVE
Max. Cycles at Max. Process Temperature	001
Process Temperature max. C	260

**Material Info****Reference - Drawing Numbers**

Packaging Specification	PK-43810-001-000
Product Specification	PS-43810-001-001, PS-45750-001-001
Sales Drawing	SD-43810-051-000

This document was generated on 10/16/2019

**PLEASE CHECK [WWW.MOLEX.COM](http://WWW.MOLEX.COM) FOR LATEST PART INFORMATION**

# Mouser Electronics

Authorized Distributor

Click to View Pricing, Inventory, Delivery & Lifecycle Information:

[Molex:](#)

[43810-0100](#)