

NOTES

1. ALL DIMENSIONS ARE IN $\frac{\text{INCHES}}{[\text{MILLIMETERS}]}$

2. DIMENSIONS APPEARING IN TABLE ARE AS FOLLOWS:

- a - AS SUPPLIED
- b - AFTER UNRESTRICTED RECOVERY

③ COATING (ADHESIVE): IS OPTIONAL AS SUPPLIED DIMENSIONS APPEARING IN TABLE ARE FOR UNCOATED PARTS. WHEN COATING IS ADDED, ENTRY DIAMETER WILL BE REDUCED BY .06 MAX.

4. ORDERING INFORMATION:

BASE PART NUMBER 202E334 -XX -XX /XXX -0

MATERIAL DASH NUMBER

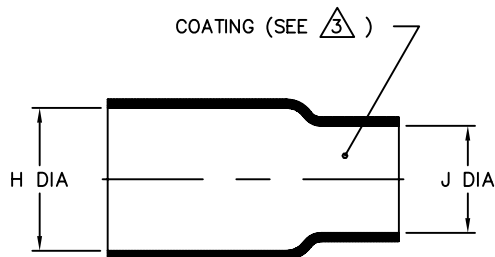
- 50 FLEXIBLE VITON (RT-1313)
- 51 FLEXIBLE EPB (RT-1321)
- 71 FLEXIBLE POLYOLEFIN (RT-1316)
- 770 NBCCS (RT-770 TYPE II)
- 780 NBCCS (RT-780 TYPE II)

MODIFICATION NUMBER

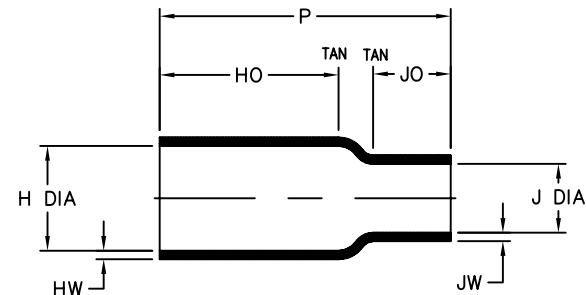
ADHESIVE SLASH NUMBER

SEE COMPATIBILITY CHART BELOW

COLOR DESIGNATOR



AS SUPPLIED



AFTER UNRESTRICTED RECOVERY

TABLE OF DIMENSIONS

PART DESCRIPTION	H		J		P ±10% b	HO ±10% b	JO ±10% b	HW ±25% b	JW ±25% b
	MIN	MAX	MIN	MAX					
	a	b	a	b					
202E334	.50 [12,7]	.42 [10,7]	.44 [11,2]	.11 [2,8]	2.50 [63,5]	1.62 [41,1]	.62 [15,7]	.06 [1,52]	.06 [1,52]
202E336	.82 [20,8]	.42 [10,7]	.81 [20,6]	.21 [5,3]	2.50 [63,5]	1.62 [41,1]	.65 [16,5]	.06 [1,52]	.06 [1,52]
202E344	.87 [22,1]	.74 [18,8]	.44 [11,2]	.10 [2,5]	2.10 [53,3]	1.10 [27,9]	.62 [15,7]	.09 [2,29]	.06 [1,52]
202E346	.87 [22,1]	.74 [18,8]	.81 [20,6]	.31 [7,9]	2.10 [53,3]	1.10 [27,9]	.55 [14,0]	.09 [2,29]	.06 [1,52]

If this document is printed it becomes uncontrolled. Check for the latest revision

COMPATIBILITY CHART

MATERIAL DASH NO.	ADHESIVE (COATING) SLASH NO.	ADHESIVE (COATING) S NO.
-50	N/A	N/A
-51	/86; /164; /180	S-1048; S-1124; S-1030
-71	/42; /86; /180	S-1017; S-1048; S-1030
-770	N/A	N/A
-780	N/A	N/A

UNLESS OTHERWISE SPECIFIED DIMENSIONS ARE INCHES. METRIC DIMENSIONS ARE IN BRACKETS.

DECIMAL TOLERANCES

.XXX ± 0.005	[0.13 mm]
.XX ± 0.01	[0.25 mm]
.X ± 0.1	[0.50 mm]

ANGLE TOLERANCE

.X ± 1 DEG.

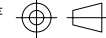
TYCO ELECTRONICS RESERVES THE RIGHT TO AMEND THIS DRAWING AT ANY TIME. USERS SHOULD EVALUATE THE SUITABILITY OF THE PRODUCT FOR THEIR APPLICATION.

© 2008-2009 Tyco Electronics Corporation. All rights reserved.

DRAWN
YUNGUYEN

APPROVED
STRAN

THIRD ANGLE
PROJECTION



CUSTOMER DRAWING

Tyco Electronics

Raychem Molded Parts
305 Constitution Dr
Menlo Park, CA 94025

TITLE

BOOT, STRAIGHT

SIZE
B

CODE IDENT. NO.
06090

DWG. NO.

202E334thru346

DO NOT SCALE THIS DRAWING

SHEET 1 OF 1

Mouser Electronics

Authorized Distributor

Click to View Pricing, Inventory, Delivery & Lifecycle Information:

[TE Connectivity:](#)

[202E336-51/86-0](#)