

SPRING-LOADED CONNECTORS

SERIES 419, 430 • .100" GRID TARGET CONNECTORS FOR SPRING-LOADED ASSEMBLIES • DOUBLE ROW STRIPS

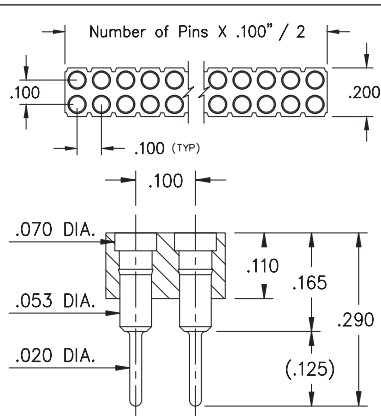


FIG. 1

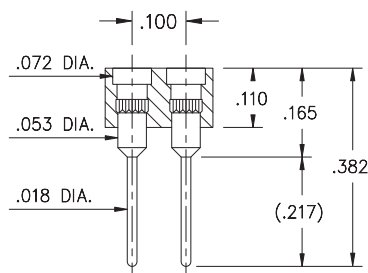


FIG. 2

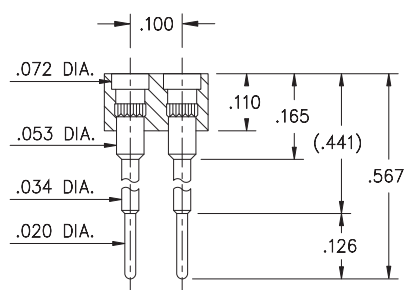


FIG. 3

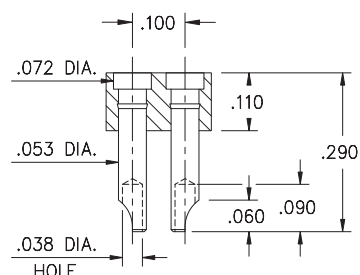
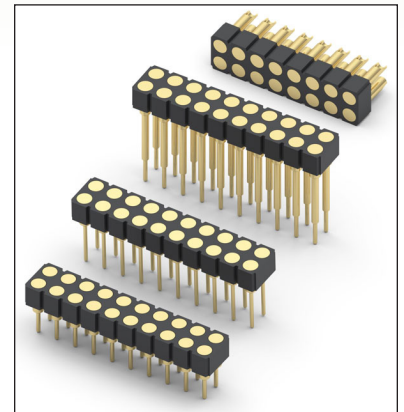


FIG. 4

- Series 419 and 430 Spring Target Connectors, supplied in double row strips. Available in through-hole and wire termination configurations
- Target Connectors provide an excellent gold-plated conductive mating surface for spring loaded connectors. These series are offered with a flat face for making contact with our standard .042" dia. spring pin plungers
- Target connectors use MM #1938, #1940, #1942 and #3024 pins. See page 218 for details
- Insulators are high temperature thermoplastic



ORDERING INFORMATION

	Series 419...001	Standard Solder Tails
FIG. 1	419-10-2	-00-001000
	Specify number of pins	04-64
	Series 419...002	Long Solder Tails
FIG. 2	419-10-2	-00-002000
	Specify number of pins	04-64
	Series 419...005	Elevated with Solder Tails
FIG. 3	419-10-2	-00-005000
	Specify number of pins	04-64
	Series 430...240	Solder Cups
FIG. 4	430-10-2	-00-240000
	Specify number of pins	04-64
<div style="display: flex; justify-content: space-around; align-items: center;"> <div style="border: 1px solid black; padding: 5px; background-color: #90EE90;">RoHS-2 2011/65/EU</div> <div style="border: 1px solid black; border-radius: 50%; padding: 5px;">XX=Plating Code See Below</div> <div style="border: 1px solid black; border-radius: 50%; padding: 5px;">For Electrical, Mechanical & Environmental Data, See page 264</div> </div>		
SPECIFY PLATING CODE XX=		
Pin Plating	10 ◆	10 μ" Au

Mouser Electronics

Authorized Distributor

Click to View Pricing, Inventory, Delivery & Lifecycle Information:

Mill-Max:

[419-10-272-30-041000](#) [419-10-264-00-001000](#) [419-10-264-00-002000](#) [419-10-264-00-005000](#) [430-10-264-00-240000](#) [499-10-264-10-008000](#) [419-10-226-00-001000](#) [419-10-216-30-041000](#) [419-10-212-00-001000](#)