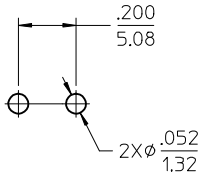
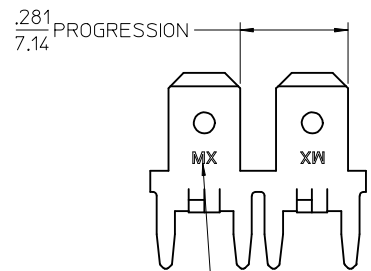
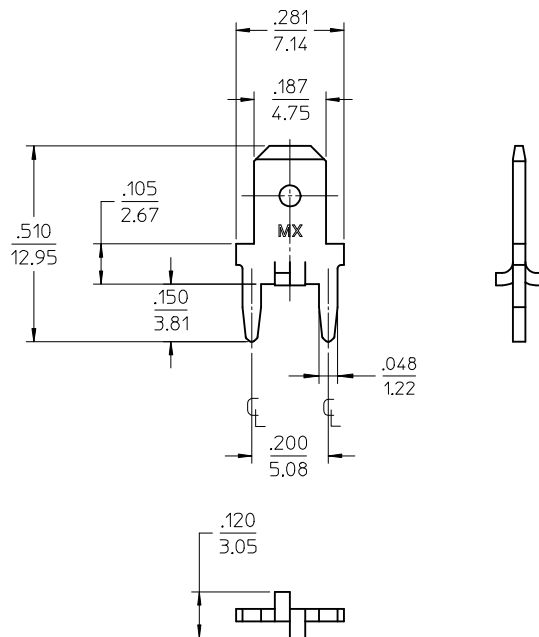


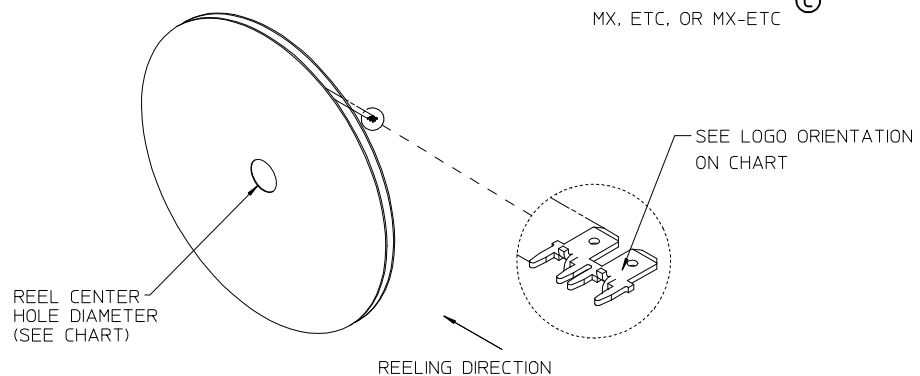
MATERIAL NUMBER	ENGINEERING NUMBER	CARRIER	TAB THICKNESS	LOGO ORIENTATION	REEL CENTER HOLE Ø REF.
197084023	19708-4023	STRIP	.020/0.51	IN	.750/19.05
197084033	19708-4033	STRIP	.032/0.81	IN	1.250/31.75



RECOMMENDED PCB HOLE LAYOUT



LOGO OPTIONS: MX, ETC. OR MX-ETC



- NOTES:
1. BARE EDGES PERMISSIBLE AT CARRIER CUT OFF.
  2. MATERIAL: BRASS C26000
  3. MATERIAL THICKNESS: SEE CHART
  4. TAB CONFORMS TO NEMA SPECIFICATIONS.
  5. ALL DIMENSIONS AND NOTES REFERENCE UNLESS OTHERWISE NOTED.
  6. PLATING: MATTE TIN, 150µ IN/3.81µmm MINIMUM THICKNESS OVER NICKEL 50µ IN/1.25µmm MINIMUM THICKNESS.
  7. REF.: 10,000 MINIMUM PARTS PER REEL, REEL HAS 24" DIAMETER REEL WITH A (SEE CHART) DIAMETER CENTER HOLE.
  8. PART IS ROHS COMPLIANT.

ADDED LOGO OPTIONS & ROHS EC NO: ETC2007-0338 2007/03/15 DRW: NEHLE 2007/03/26 CHKD: JMACNEIL 2007/03/27 APPR: JMACNEIL	DESCRIPTION	QUALITY SYMBOLS  ▽=0 ▽=0	GENERAL TOLERANCES (UNLESS SPECIFIED)		DIMENSION STYLE IN/MM		SCALE 4:1	DESIGN UNITS INCH	THIRD ANGLE PROJECTION		
				mm	INCH	DRAWN BY JPAWLICK	DATE 01/06/14	TITLE QUICK DISCONNECT, PCB MOUNT, .187 X .032/.020 TAB W/STABILIZERS MOLEX INCORPORATED			
			4 PLACES	± ---	± ---	CHECKED BY RDEROSS	DATE 01/06/15				
			3 PLACES	± ---	± .005	APPROVED BY RDEROSS	DATE 01/06/15				
			2 PLACES	± 0.13	± .01	MATERIAL NO.		DOCUMENT NO. SD-19708-001			
			1 PLACE	± 0.25	± ---	SIZE					
			ANGULAR ± 1 °		SEE CHART		THIS DRAWING CONTAINS INFORMATION THAT IS PROPRIETARY TO MOLEX INCORPORATED AND SHOULD NOT BE USED WITHOUT WRITTEN PERMISSION				
			DRAFT WHERE APPLICABLE MUST REMAIN WITHIN DIMENSIONS								

# Mouser Electronics

Authorized Distributor

Click to View Pricing, Inventory, Delivery & Lifecycle Information:

Molex:

[19708-4023](#) [19708-4033](#)