

| REVISIONS |     |             |     |               |           |            |
|-----------|-----|-------------|-----|---------------|-----------|------------|
| P         | LTR | DESCRIPTION |     |               | DATE      | DWN   APVD |
|           | AA2 | REVISED     | PER | ECO-11-004587 | 11MAR11   | RK   HMR   |
|           | AB  | REVISED     | PER | ECO-17-002209 | 11APR2017 | RS   MM    |

D

C

B

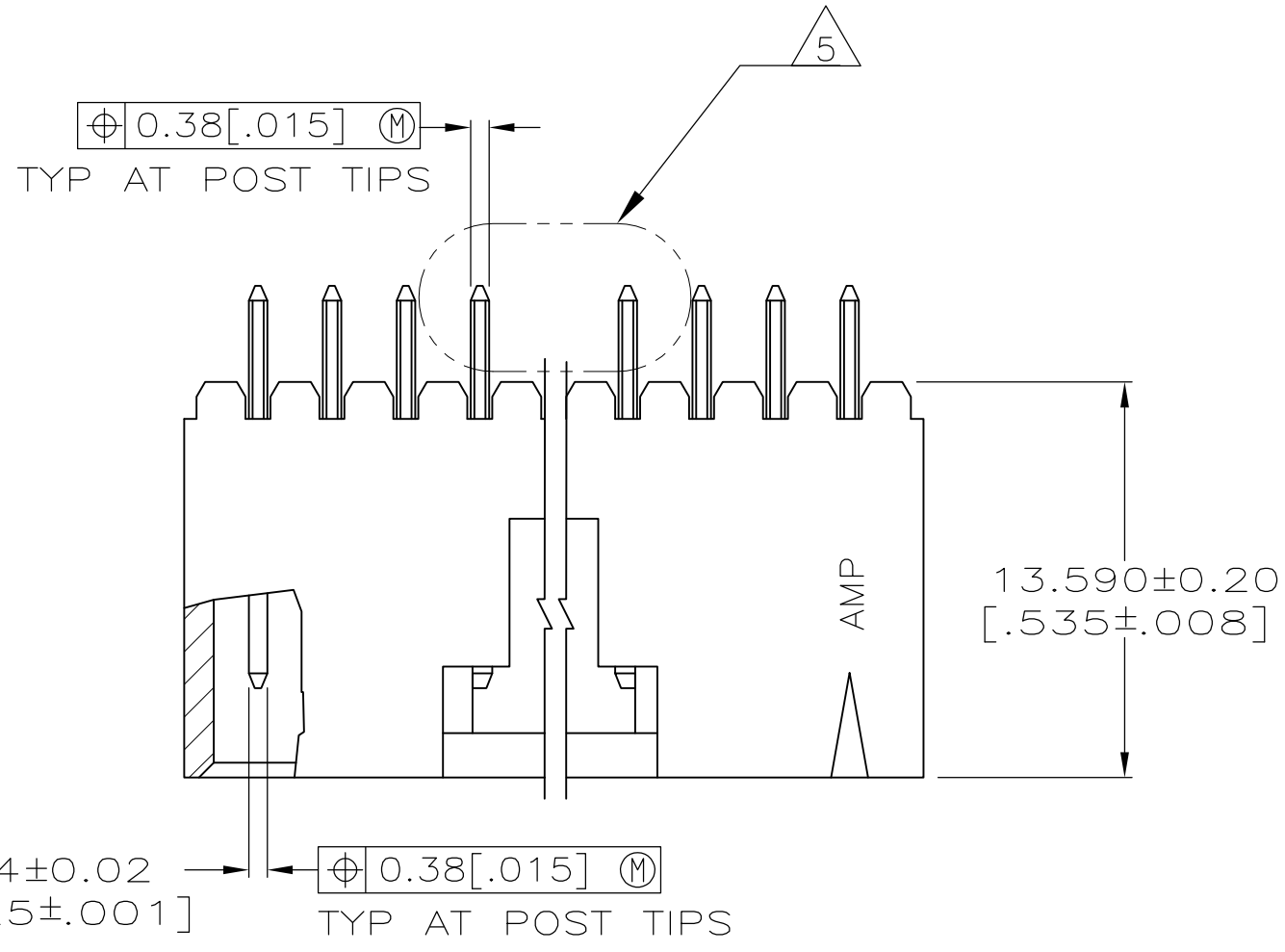
A

D

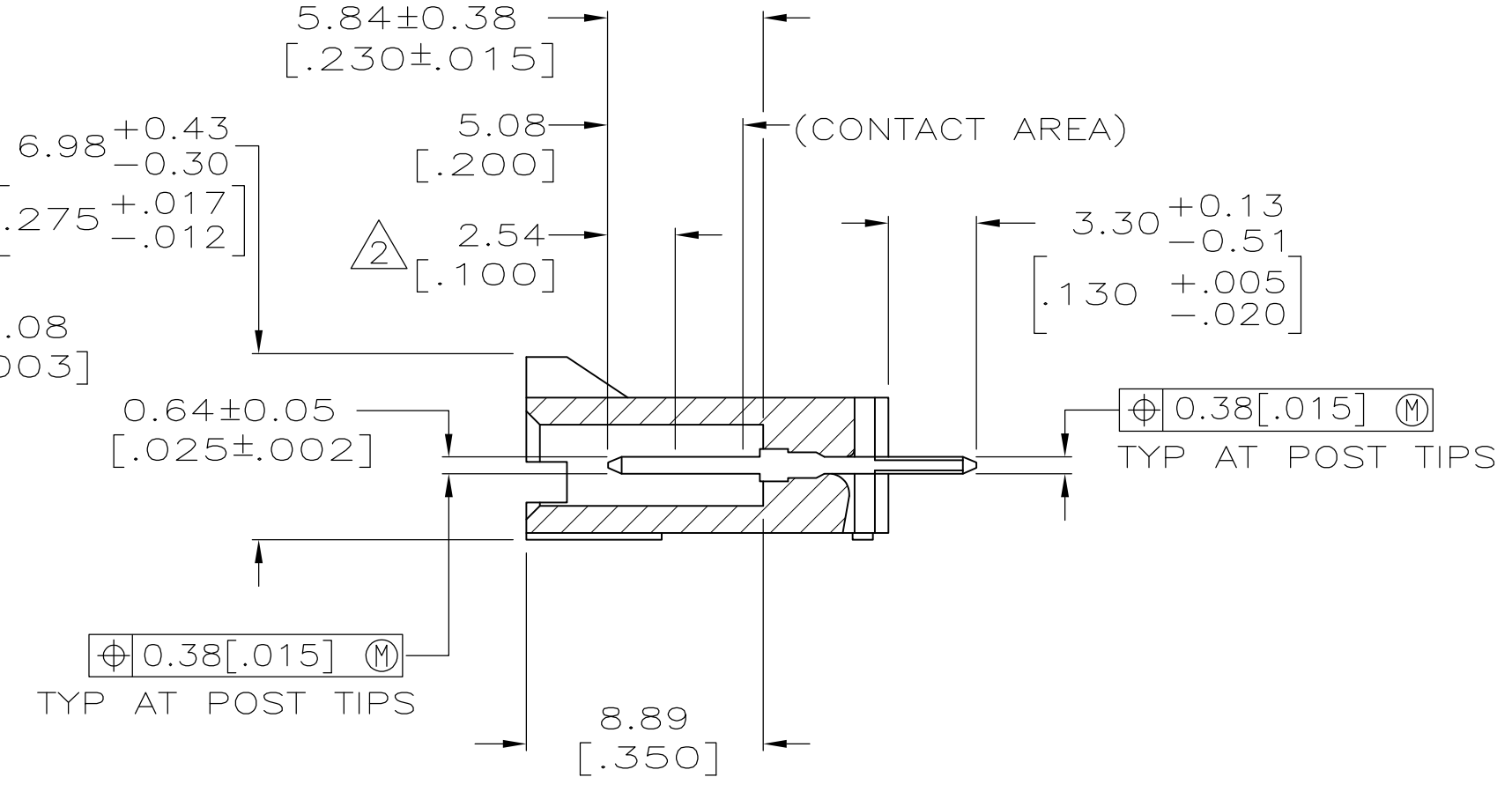
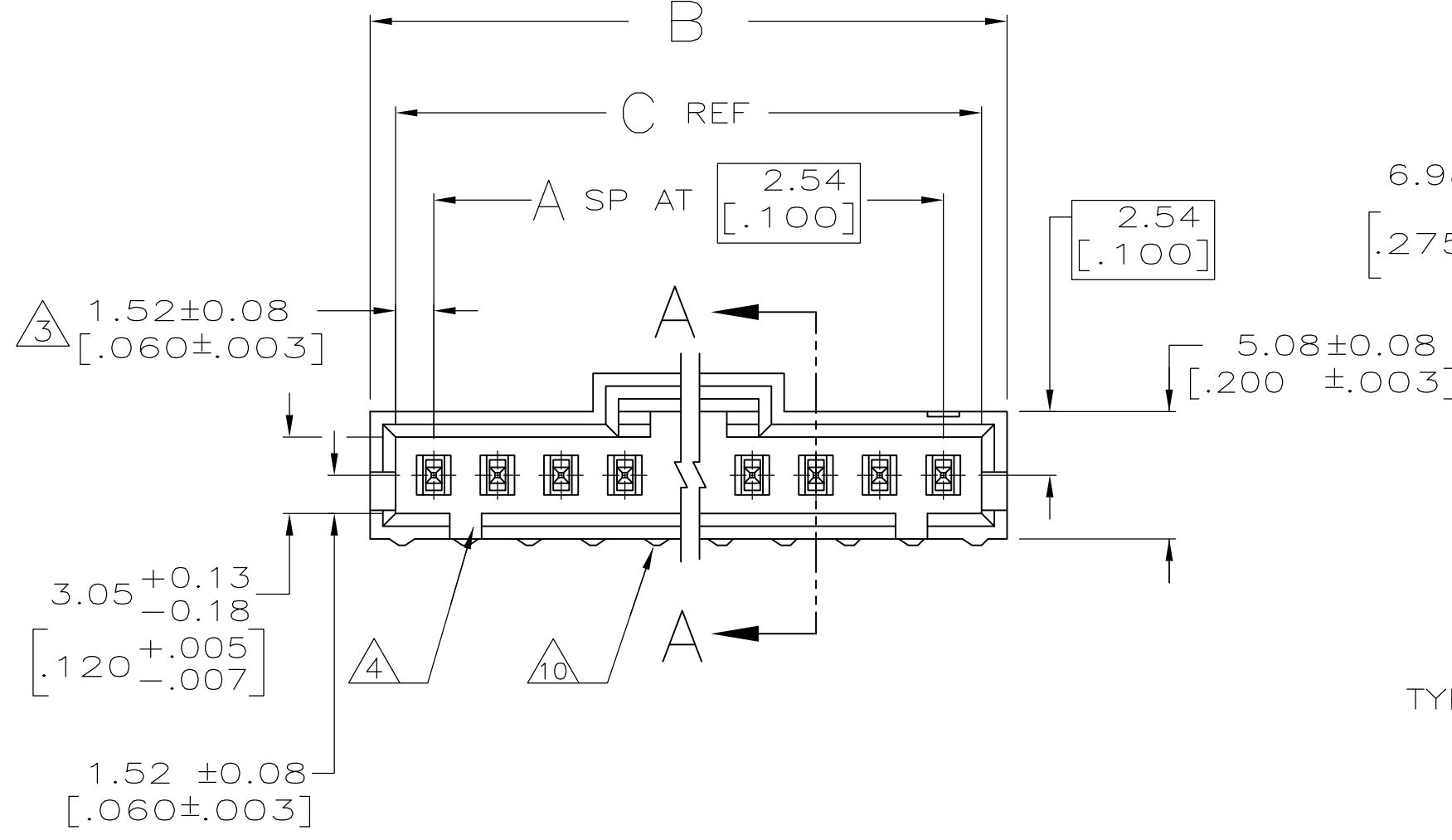
C

B

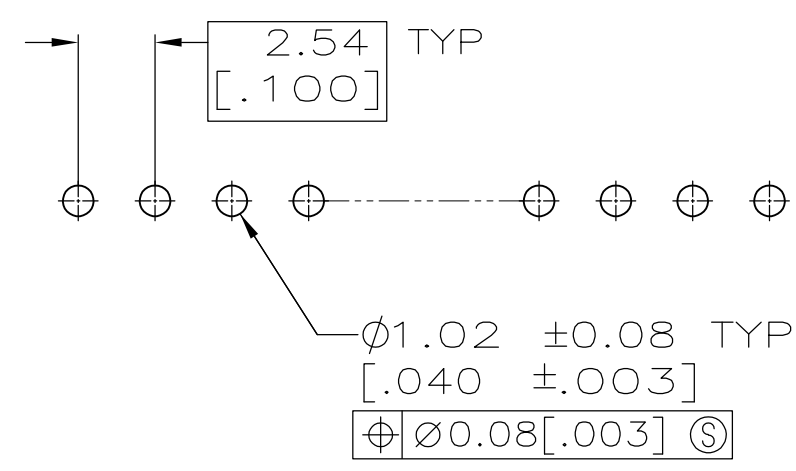
A



DETAIL Z  
POST DETAIL TYP  
2 POST MINIMUM



SECTION A-A



RECOMMENDED HOLE LAYOUT

- 1. .000100 BRIGHT TIN-LEAD OVER .000050 NICKEL.
- 2. POINT OF MEASUREMENT FOR PLATING THICKNESS.
- 3. THE NOTED DIMENSIONS APPLY AT THE INTERSECTION OF THE POST AND THE HOUSING.
- 4. ON ASSEMBLIES WITH FOUR OR MORE POSITIONS, TWO POLARIZATION SLOTS. ON ASSEMBLIES WITH TWO OR THREE POSITIONS, ONE POLARIZATION SLOT.
- 5. SELECT POST TAILS FORMED TO PROVIDE CONNECTOR HOLD DOWN UNTIL SOLDERED. CONFIGURATION ACCEPTS 0.69[.027]-2.03[.080] THICK PRINTED CIRCUIT BOARD. ( SEE DETAIL Z ).
- 6. .000100 BRIGHT TIN OVER .000050 NICKEL.
- 7. PRELIMINARY PART - NOT RELEASED FOR PRODUCTION.
- 8. .000100 MATTE TIN OVER .000050 NICKEL.
- 9. HIGH TEMPERATURE CONFIGURATION.
- 10. STANDOFFS NOT PRESENT ON UNDERSIDE OF ASSEMBLY
- 11. OBSOLETE PARTS: OBSOLETE CIS STREAMLINING PER D.RENAUD/D.SINISI

|         |          |         |   |                  |                  |    |                   |            |
|---------|----------|---------|---|------------------|------------------|----|-------------------|------------|
|         |          | 9       | 6 | 23.37<br>[.920]  | 25.27<br>[.995]  | 8  | 9                 | 3-103669-0 |
|         |          | 9       | 6 | 8.13<br>[.320]   | 10.03<br>[.395]  | 2  | 3                 | 2-103669-9 |
|         |          | 9       | 6 | 15.75<br>[.620]  | 17.65<br>[.695]  | 5  | 6                 | 2-103669-8 |
|         |          | 9       | 6 | 13.21<br>[.520]  | 15.11<br>[.595]  | 4  | 5                 | 2-103669-7 |
|         |          | 9       | 6 | 10.67<br>[.420]  | 12.57<br>[.495]  | 3  | 4                 | 2-103669-6 |
|         |          | 9       | 6 | 5.59<br>[.220]   | 7.49<br>[.295]   | 1  | 2                 | 2-103669-5 |
| 11      | OBSOLETE | 9       | 1 | 64.01<br>[2.520] | 65.91<br>[2.595] | 24 | 25                | 2-103669-4 |
| 11      | OBSOLETE | 9       | 1 | 61.47<br>[2.420] | 63.37<br>[2.495] | 23 | 24                | 2-103669-3 |
| 11      | OBSOLETE | 9       | 1 | 58.93<br>[2.320] | 60.83<br>[2.395] | 22 | 23                | 2-103669-2 |
| 11      | OBSOLETE | 9       | 1 | 56.39<br>[2.220] | 58.29<br>[2.295] | 21 | 22                | 2-103669-1 |
| 11      | OBSOLETE | 9       | 1 | 53.85<br>[2.120] | 55.75<br>[2.195] | 20 | 21                | 2-103669-0 |
|         |          | 9       | 1 | 51.31<br>[2.020] | 53.21<br>[2.095] | 19 | 20                | 1-103669-9 |
| 11      | OBSOLETE | 9       | 1 | 48.77<br>[1.920] | 50.67<br>[1.995] | 18 | 19                | 1-103669-8 |
| 11      | OBSOLETE | 9       | 1 | 46.23<br>[1.820] | 48.13<br>[1.895] | 17 | 18                | 1-103669-7 |
|         |          | 9       | 1 | 43.69<br>[1.720] | 45.59<br>[1.795] | 16 | 17                | 1-103669-6 |
|         |          | 9       | 1 | 41.15<br>[1.620] | 43.05<br>[1.695] | 15 | 16                | 1-103669-5 |
| 11      | OBSOLETE | 9       | 1 | 38.61<br>[1.520] | 40.51<br>[1.595] | 14 | 15                | 1-103669-4 |
|         |          | 9       | 1 | 36.07<br>[1.420] | 37.97<br>[1.495] | 13 | 14                | 1-103669-3 |
|         |          | 9       | 1 | 33.53<br>[1.320] | 35.43<br>[1.395] | 12 | 13                | 1-103669-2 |
|         |          | 9       | 1 | 30.99<br>[1.220] | 32.89<br>[1.295] | 11 | 12                | 1-103669-1 |
|         |          | 9       | 1 | 28.45<br>[1.120] | 30.35<br>[1.195] | 10 | 11                | 1-103669-0 |
|         |          | 9       | 1 | 25.91<br>[1.020] | 27.81<br>[1.095] | 9  | 10                | 103669-9   |
|         |          | 9       | 1 | 23.37<br>[.920]  | 25.27<br>[.995]  | 8  | 9                 | 103669-8   |
|         |          | 9       | 1 | 20.83<br>[.820]  | 22.73<br>[.895]  | 7  | 8                 | 103669-7   |
|         |          | 9       | 1 | 18.29<br>[.720]  | 20.19<br>[.795]  | 6  | 7                 | 103669-6   |
|         |          | 9       | 1 | 15.75<br>[.620]  | 17.65<br>[.695]  | 5  | 6                 | 103669-5   |
|         |          | 9       | 1 | 13.21<br>[.520]  | 15.11<br>[.595]  | 4  | 5                 | 103669-4   |
|         |          | 9       | 1 | 10.67<br>[.420]  | 12.57<br>[.495]  | 3  | 4                 | 103669-3   |
|         |          | 9       | 1 | 8.13<br>[.320]   | 10.03<br>[.395]  | 2  | 3                 | 103669-2   |
|         |          | 9       | 1 | 5.59<br>[.220]   | 7.49<br>[.295]   | 1  | 2                 | 103669-1   |
| REMARKS |          | PLATING |   | C                | B                | A  | NO.<br>OF<br>POSN | PART NO.   |

THIS DRAWING IS A CONTROLLED DOCUMENT.

DWN  
S. SHUEY  
3-5-91

CHK  
M. RIDER  
2-14-92

APVD  
M. RIDER  
2-14-92

DIMENSIONS:  
INCHES

0 PLC  
1 PLC  
2 PLC  
3 PLC  
4 PLC  
ANGLES

TOLERANCES UNLESS  
OTHERWISE SPECIFIED:  
± -  
± -  
± 0.13[.005]  
± -  
± -

SEE TABLE

NAME

PRODUCT SPEC  
108-25034

APPLICATION SPEC  
114-25026

WEIGHT  
-

CUSTOMER DRAWING

TE Connectivity

HDR ASSY, VERT, SINGLE ROW  
2.54 [100] C/L 0.64 [025] SQ POST  
WITH PLZN, AMPMODU MTE

SIZE  
A1

CAGE CODE  
00779

DRAWING NO  
103669

RESTRICTED TO  
-

SCALE  
4:1

SHEET  
1

OF  
2

REV  
AB

8

7

6

5

4

3

2

1

THIS DRAWING IS UNPUBLISHED.

RELEASED FOR PUBLICATION

ALL RIGHTS RESERVED.

REVISIONS

| P | LTR | DESCRIPTION | DATE | DWN | APVD |
|---|-----|-------------|------|-----|------|
| — | —   | SEE SHEET 1 | —    | —   | —    |

OBSOLETE

11

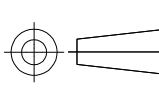
|                                      |                         |                  |                  |    |                   |            |
|--------------------------------------|-------------------------|------------------|------------------|----|-------------------|------------|
| <div><div>9</div><div>10</div></div> | <div><div>8</div></div> | 64.01<br>[2.520] | 65.91<br>[2.595] | 24 | 25                | 7-103669-4 |
| <div><div>9</div><div>10</div></div> | <div><div>8</div></div> | 61.47<br>[2.420] | 63.37<br>[2.495] | 23 | 24                | 7-103669-3 |
| <div><div>9</div><div>10</div></div> | <div><div>8</div></div> | 58.93<br>[2.320] | 60.83<br>[2.395] | 22 | 23                | 7-103669-2 |
| <div><div>9</div><div>10</div></div> | <div><div>8</div></div> | 56.39<br>[2.220] | 58.29<br>[2.295] | 21 | 22                | 7-103669-1 |
| <div><div>9</div><div>10</div></div> | <div><div>8</div></div> | 53.85<br>[2.120] | 55.75<br>[2.195] | 20 | 21                | 7-103669-0 |
| <div><div>9</div><div>10</div></div> | <div><div>8</div></div> | 51.31<br>[2.020] | 53.21<br>[2.095] | 19 | 20                | 6-103669-9 |
| <div><div>9</div><div>10</div></div> | <div><div>8</div></div> | 48.77<br>[1.920] | 50.67<br>[1.995] | 18 | 19                | 6-103669-8 |
| <div><div>9</div><div>10</div></div> | <div><div>8</div></div> | 46.23<br>[1.820] | 48.13<br>[1.895] | 17 | 18                | 6-103669-7 |
| <div><div>9</div><div>10</div></div> | <div><div>8</div></div> | 43.69<br>[1.720] | 45.59<br>[1.795] | 16 | 17                | 6-103669-6 |
| <div><div>9</div><div>10</div></div> | <div><div>8</div></div> | 41.15<br>[1.620] | 43.05<br>[1.695] | 15 | 16                | 6-103669-5 |
| <div><div>9</div><div>10</div></div> | <div><div>8</div></div> | 38.61<br>[1.520] | 40.51<br>[1.595] | 14 | 15                | 6-103669-4 |
| <div><div>9</div><div>10</div></div> | <div><div>8</div></div> | 36.07<br>[1.420] | 37.97<br>[1.495] | 13 | 14                | 6-103669-3 |
| <div><div>9</div><div>10</div></div> | <div><div>8</div></div> | 33.53<br>[1.320] | 35.43<br>[1.395] | 12 | 13                | 6-103669-2 |
| <div><div>9</div><div>10</div></div> | <div><div>8</div></div> | 30.99<br>[1.220] | 32.89<br>[1.295] | 11 | 12                | 6-103669-1 |
| <div><div>9</div><div>10</div></div> | <div><div>8</div></div> | 28.45<br>[1.120] | 30.35<br>[1.195] | 10 | 11                | 6-103669-0 |
| <div><div>9</div><div>10</div></div> | <div><div>8</div></div> | 25.91<br>[1.020] | 27.81<br>[1.095] | 9  | 10                | 5-103669-9 |
| <div><div>9</div><div>10</div></div> | <div><div>8</div></div> | 23.37<br>[.920]  | 25.27<br>[.995]  | 8  | 9                 | 5-103669-8 |
| <div><div>9</div><div>10</div></div> | <div><div>8</div></div> | 20.83<br>[.820]  | 22.73<br>[.895]  | 7  | 8                 | 5-103669-7 |
| <div><div>9</div><div>10</div></div> | <div><div>8</div></div> | 18.29<br>[.720]  | 20.19<br>[.795]  | 6  | 7                 | 5-103669-6 |
| <div><div>9</div><div>10</div></div> | <div><div>8</div></div> | 15.75<br>[.620]  | 17.65<br>[.695]  | 5  | 6                 | 5-103669-5 |
| <div><div>9</div><div>10</div></div> | <div><div>8</div></div> | 13.21<br>[.520]  | 15.11<br>[.595]  | 4  | 5                 | 5-103669-4 |
| <div><div>9</div><div>10</div></div> | <div><div>8</div></div> | 10.67<br>[.420]  | 12.57<br>[.495]  | 3  | 4                 | 5-103669-3 |
| <div><div>9</div><div>10</div></div> | <div><div>8</div></div> | 8.13<br>[.320]   | 10.03<br>[.395]  | 2  | 3                 | 5-103669-2 |
| <div><div>9</div><div>10</div></div> | <div><div>8</div></div> | 5.59<br>[.220]   | 7.49<br>[.295]   | 1  | 2                 | 5-103669-1 |
| REMARKS                              | PLATING                 | C                | B                | A  | NO.<br>OF<br>POSN | PART NO.   |

11

OBSOLETE

THIS DRAWING IS A CONTROLLED DOCUMENT.

DIMENSIONS:  
INCHES



MATERIAL  
HOUSING: LCP

FINISH  
SEE TABLE

TOLERANCES UNLESS  
OTHERWISE SPECIFIED:

0 PLC ± -  
1 PLC ± -  
2 PLC ± 0.13[.005]  
3 PLC ± -  
4 PLC ± -  
ANGLES ± -

THIS DRAWING IS A CONTROLLED DOCUMENT.

DWN  
S. SHUEY  
3-5-91

CHK  
M. RIDER  
2-14-92

APVD  
M. RIDER  
2-14-92

NAME  
HDR ASSY, VERT, SINGLE ROW  
2.54 [.100] C/L 0.64 [.025] SQ POST  
WITH PLZN, AMPMODU MTE

SIZE  
A1

CAGE CODE  
00779

DRAWING NO  
103669

RESTRICTED TO  
—

CUSTOMER DRAWING

SCALE  
4:1

SHEET  
2

OF  
2

REV  
AB

4805 (1/15)

# Mouser Electronics

Authorized Distributor

Click to View Pricing, Inventory, Delivery & Lifecycle Information:

[TE Connectivity:](#)

[1-103669-2](#)