

4

3

2

1

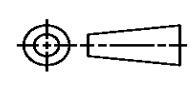

THIS DRAWING IS UNPUBLISHED. RELEASED FOR PUBLICATION
 © COPYRIGHT ALL RIGHTS RESERVED.

LOC	DIST	REVISIONS			
P	LTR	DESCRIPTION	DATE	DWN	APVD
	A1	ECR-14-002656	24FEB2014	GK	HMR

REPLACED BY OCEAN STYLE APPLICATOR PART NUMBER 2150235-5

FOR REPLACEMENT PARTS FOR APPLICATOR 2034070
 REFER TO ADDITIONAL PAGE(S). SPARE PARTS KIT (IF LISTED)
 WILL REMAIN AVAILABLE.

THE REPLACEMENT OCEAN STYLE APPLICATOR HAS THE
 SAME TERMINATOR/PRESS INTERFACE AS APPLICATOR
 2034070

THIS DRAWING IS A CONTROLLED DOCUMENT.		DWN	GOPALAKRISHNA HV			
DIMENSIONS:		CHK	RAGHAVENDRA			
TOLERANCES UNLESS OTHERWISE SPECIFIED:		APVD	RAGHAVENDRA			
		PRODUCT SPEC	 TE Connectivity NAME END FEED SYSTEM III APPLICATOR			
		APPLICATION SPEC				
MATERIAL	FINISH	WEIGHT	SIZE	CAGE CODE	DRAWING NO	RESTRICTED TO
			A3		©- 2034070	
CUSTOMER DRAWING			SCALE	SHEET 1 OF 2	REV A1	

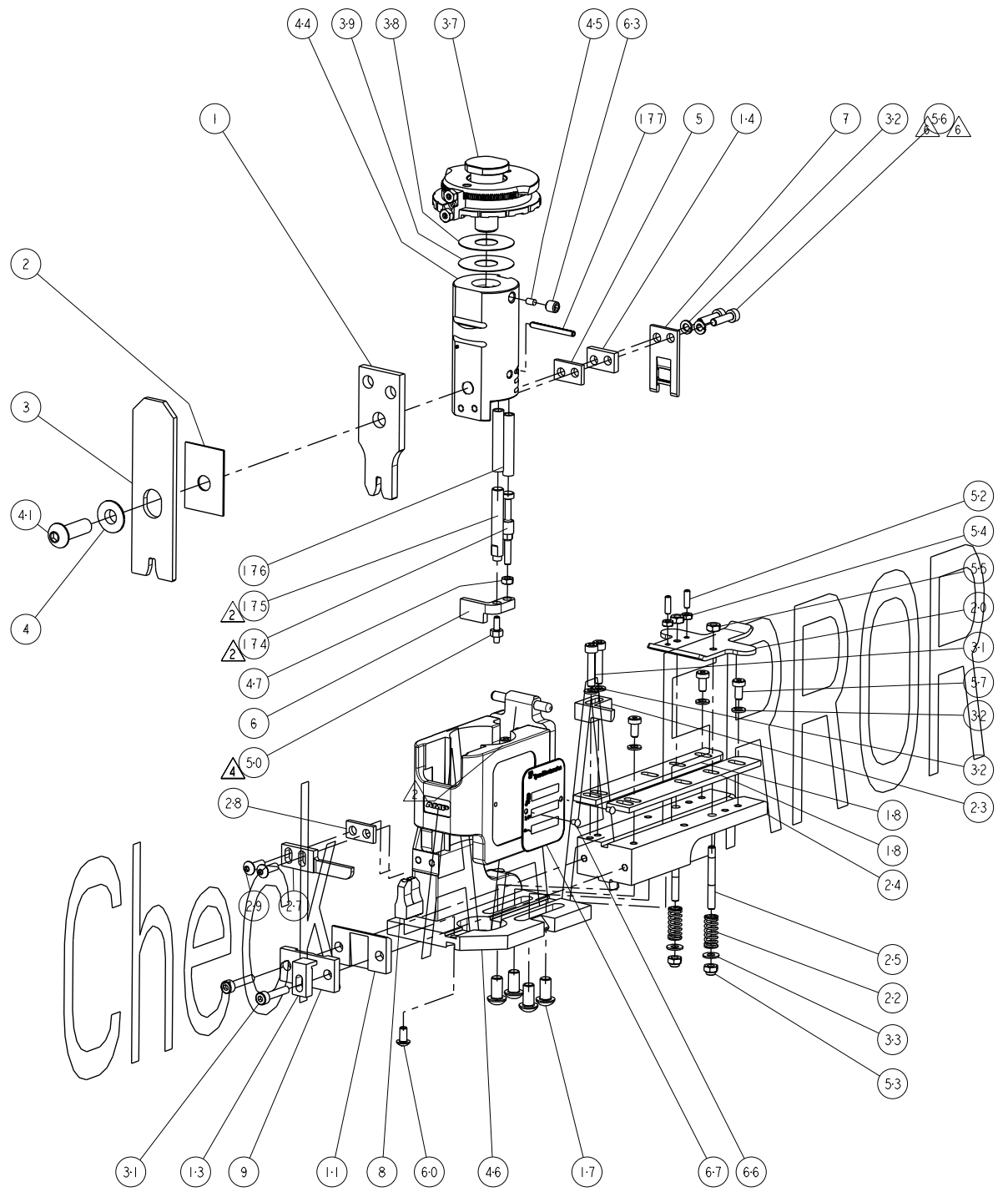
8		7		6		5		4		3		2		1	
THIS DRAWING IS UNPUBLISHED. RELEASED FOR PUBLICATION 20															
COPYRIGHT 20 BY TYCO ELECTRONICS CORPORATION. ALL RIGHTS RESERVED.															
PART NUMBER	REV	DESCRIPTION	PROGRAMMED MEMORY CHIP												
2034070-1	A	S3A APPLICATOR	8-2034070-1												
7-2034070-1	A	-1 AND SPARE PARTS	9-2034070-1												
7-2034070-7	A	SPARE PARTS KIT													

FEED FINGER 1901697-1	SET UP GAGE 1901068-1	LOC A	DIST 66	REVISIONS					
				#	LYR	DESCRIPTION	DATE	BY	APPV
				A		ORIGINAL	23JAN2009	DJG	DJG

APPLICATOR DATA		
CRIMP	SIZE	TYPE
WIRE	2.79 [.110IN]	F
INSUL	4.57 [.180IN]	F
APPL INSTRUCTIONS 408-10136		

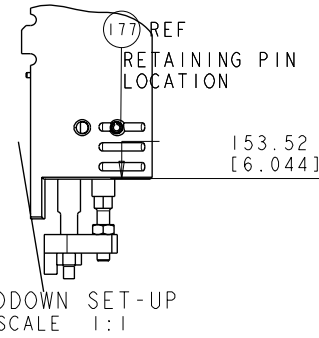
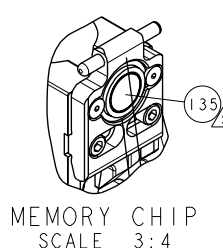
TERMINAL DATA: TE TERMINAL		TYCO ELECTRONICS CRIMP SPEC	
TERMINAL NAME: .250 SERIES FASTIN-FASTTON REC.			
WIRE STRIP LENGTH 4.80-5.60mm [.188-.220 IN]		INSULATION DIAMETER RANGE 3.05-4.32mm [.120-.170 IN]	
TERMINAL APPL SPEC	114-3118		
TERMINALS APPLIED			
5-160446-1	5-160446-5	6-160446-6	160824-5
5-160446-2	5-160446-6	6-160446-7	160824-6
5-160446-4	5-160446-8	6-160446-8	

WIRE SIZE	CRIMP HEIGHT mm [INCH]	REF SETTING*
2.5mm ²	1.83±.05 - [.072±.002]	B1
2mm ²	1.78±.05 - [.070±.002]	B5
1.5mm ²	1.68±.05 - [.066±.002]	C2
1mm ²	1.58±.05 - [.062±.002]	D0



-	1	1	1-993111-6	PIN, SLOTTED SPRING 3.0 X 30.0	177
-	2	2	3-22280-7	SPRING, COMPRESSION	176
-	1	1	1752353-1	GUIDE PIN, HOLDDOWN	175
-	1	1	1901680-1	GUIDE PIN, HOLDDOWN	174
REF	REF	REF	SEE TABLE	MEMORY CHIP, PROGRAMMED	135
-	1	1	1633565-2	DOCUMENTATION PACKAGE S111	71
-	1	1	1901048-1	TAG, IDENTIFICATION	67
-	2	2	21017-1	SCREW, DRIVE	66
-	1	1	3-18031-0	SCR, SET, CUP POINT M6 X 6.0	63
-	1	1	1655785-1	SCR, BTN SKT HD CAP (M4 X 8)	60
-	3	3	1655783-2	SCR, CAP, SOC HD, LOW HEAD, M4 X 8	57
-	2	2	1655316-3	SCR, SKT HD CAP, M4 X 16.0	56
-	2	2	18030-2	NUT, HEX, REG M4	55
-	2	2	18030-1	NUT, HEX, REG M3	54
-	2	2	986965-1	NUT, LOCK, HEX, TORQUE (M4)	53
-	2	2	2-18032-2	SCR, SET, FLT POINT M3 X 10.0	52
-	1	1	1-1976055-3	STANDOFF, HOLD-DOWN	50
-	1	1	1-18030-0	NUT, HEX, REG M3.5	47
-	1	1	1752320-1	EF SYSTEM III APPLICATOR	46
-	1	1	690191-1	PLUG, NYLON	45
-	1	1	1901069-1	RAM ASSEMBLY, SYSTEM III RETROFIT	44
-	1	1	2-1655785-3	SCR, BTN SKT HD CAP (M8 X 25)	41
-	1	1	690125-1	SHIM SUB-ASSY	39
-	1	1	1-469367-0	SHIM	38
-	1	1	879103-2	FINE ADJUST HEAD SUBASSY	37
-	2	2	18028-2	WASHER, FLAT, REG M4	33
-	7	7	18026-2	WASHER, SPRG LOCK, REG M4	32
-	4	4	2-1655316-6	SCR, SKT HD CAP, M4 X 20.0	31
-	2	2	1655785-2	SCR, BTN SKT HD CAP (M4 X 12)	29
-	1	1	1-690451-8	SPACER, STRIPPER	28
-	1	1	240639-1	STRIPPER (MACHINING)	27
-	2	2	1320906-1	STUD, THREADED	25
-	1	1	1752371-6	PLATE, STRIP GUIDE	24
-	1	1	240825-1	PLATE, STRIP HOLD DOWN	23
-	2	2	2-22281-5	SPRING, DRAG	22
-	1	1	1752373-1	DRAG	20
-	2	2	1901259-6	GUIDE, LOWER STRIP	18
-	4	4	1655785-5	SCR, BTN SKT HD CAP (M6 X 12)	17
-	1	1	2-240641-4	SPACER	14
-	1	1	1752360-1	SPACER, HOLD-DOWN	13
-	1	1	240833-2	PLATE, REAR SHEAR	11
-	1	1	1-690482-0	PLATE, FRONT SHEAR	9
-	1	2	1333219-3	ANVIL, COMBINATION	8
-	1	1	690474-9	BLADE, SLUG	7
-	1	1	1901681-5	HOLDDOWN, TERMINAL	6
-	1	1	1-240641-6	SPACER	5
-	1	1	238009-1	BLOCK, FL CRIMPER SPACER	4
-	1	2	456134-6	CRIMPER, INSULATION F PREMIUM	3
-	1	1	455888-8	SPACER, CRIMPER	2
-	1	2	456408-5	CRIMPER, WIRE PREMIUM	1

- ⚠ RECOMMENDED SPARE PARTS.
- ⚡ GREASE BEARING SURFACES LIGHTLY.
- 3. LUBRICATE DAILY PER THE APPLICATOR INSTRUCTION SHEET SUPPLIED WITH THE APPLICATOR.
- ⚠ APPLY P/N 1-23419-5 LOCTITE® TO THREADS.
- ⚠ APPLICATOR SPECIFIC DATA TO BE ENTERED INTO BLANK MEMORY CHIP AT ASSEMBLY.
- ⚠ CUT TO LENGTH AT ASSEMBLY.



DIMENSIONS: mm [INCHES]		TOLERANCES, UNLESS OTHERWISE SPECIFIED:		DWN D. J. GOOD 30DEC2008		Tyco Electronics Harrisburg, PA 17105-3608	
0 PLC	±.1	1 PLC	±.05	2 PLC	±.02	3 PLC	±.005
4 PLC	±.0005	ANGLES		APVD I. ELBIN 30DEC2008		NAME	
MATERIAL:		FINISH:		PRODUCT SPEC		APPLICATION SPEC	
WEIGHT:		SCALE		SIZE		RESTRICTED TO	
CUSTOMER DRAWING		SCALE 3:5		A 00779 2034070		SHEET 1 OF 1 REV A	

Mouser Electronics

Authorized Distributor

Click to View Pricing, Inventory, Delivery & Lifecycle Information:

[TE Connectivity:](#)

[2034070-1](#)