

REVISIONS					
P	LTR	DESCRIPTION	DATE	DWN	APVD
	P1	PCB LAYOUT ADDED HIGH TEMP PHRASE REMOVED	03AUG16	FP	NG

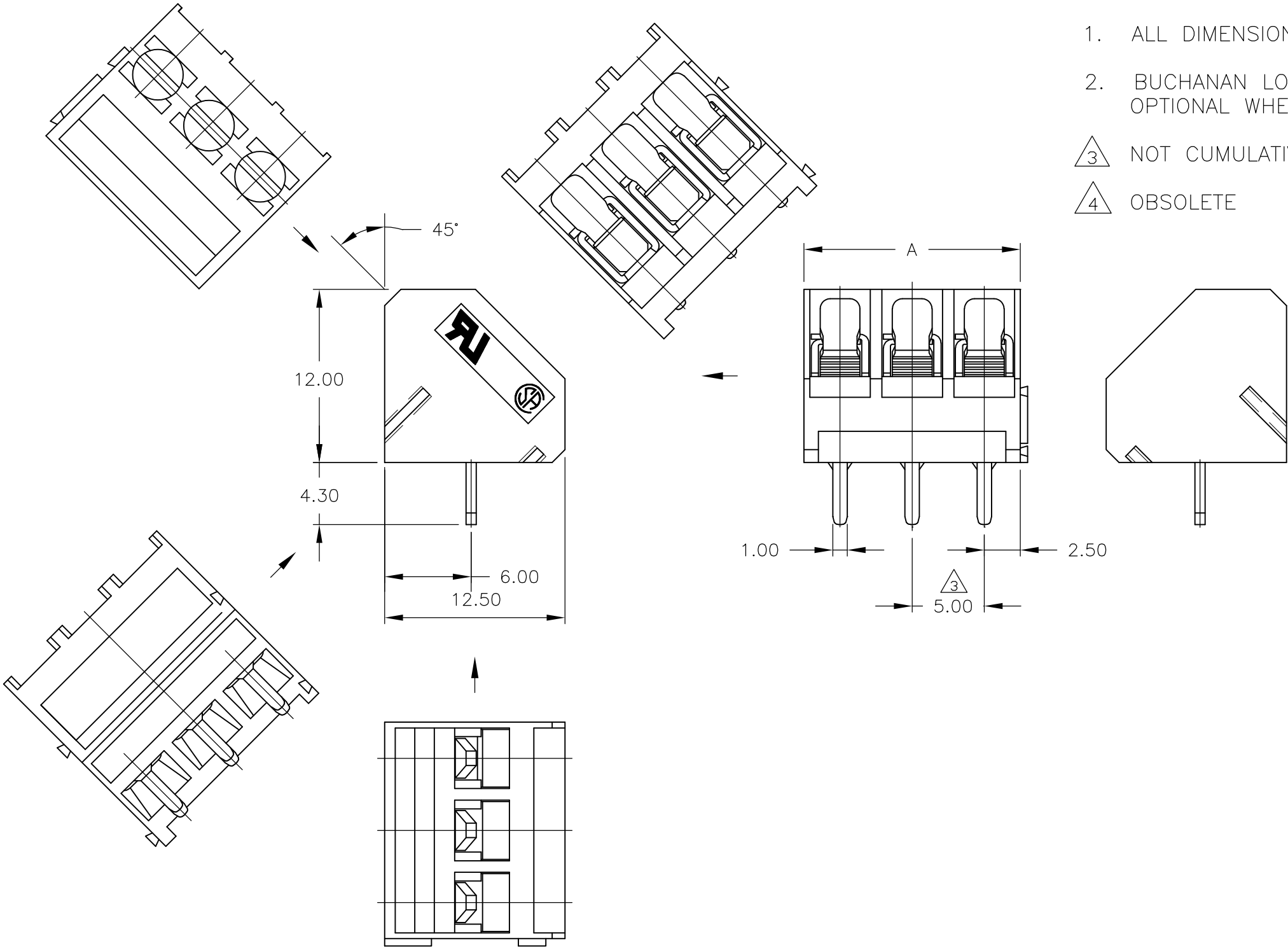
NOTES:

1. ALL DIMENSIONS ARE IN mm.
2. BUCHANAN LOGO TO APPEAR ON HOUSING LOCATION OPTIONAL WHERE SPACE PERMITS.

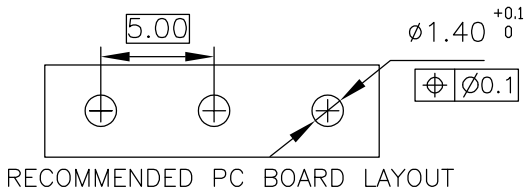
- 3

NOT CUMULATIVE
- 4

OBSOLETE



<div>4</div>	120.00	24	2-1776252-4
<div>4</div>	115.00	23	2-1776252-3
<div>4</div>	110.00	22	2-1776252-2
<div>4</div>	105.00	21	2-1776252-1
<div>4</div>	100.00	20	2-1776252-0
<div>4</div>	95.00	19	1-1776252-9
<div>4</div>	90.00	18	1-1776252-8
<div>4</div>	85.00	17	1-1776252-7
<div>4</div>	80.00	16	1-1776252-6
<div>4</div>	75.00	15	1-1776252-5
<div>4</div>	70.00	14	1-1776252-4
<div>4</div>	65.00	13	1-1776252-3
<div>4</div>	60.00	12	1-1776252-2
<div>4</div>	55.00	11	1-1776252-1
<div>4</div>	50.00	10	1-1776252-0
<div>4</div>	45.00	9	1776252-9
<div>4</div>	40.00	8	1776252-8
<div>4</div>	35.00	7	1776252-7
<div>4</div>	30.00	6	1776252-6
<div>4</div>	25.00	5	1776252-5
<div>4</div>	20.00	4	1776252-4
<div>4</div>	15.00	3	1776252-3
<div>4</div>	10.00	2	1776252-2
<div>4</div>	DIM. A	NO. OF POS.	PART NUMBER



THIS DRAWING IS A CONTROLLED DOCUMENT.		DWN	S	SCHLEGEL	5/5/05	<div><div>STE</div>TE Connectivity</div>		
		CHK	C	RICHARD	5/5/05			
		APVD	C	RICHARD	5/5/05	NAME		
		PRODUCT SPEC				TERMINAL BLOCK 45 DEGREE WIRE INLET W/ INTERLOCK, 5.0mm PITCH		
		APPLICATION SPEC				-		
		WEIGHT				SIZE	CAGE CODE	DRAWING NO
		0				A3	00779	C-1776252
		CUSTOMER DRAWING				SCALE	NTS	SHEET
						1 of 2		REV
								P1

4		3		2		1			
THIS DRAWING IS UNPUBLISHED.		RELEASED FOR PUBLICATION		REVISIONS					
© COPYRIGHT - By -		ALL RIGHTS RESERVED.		P	LTR	DESCRIPTION	DATE	DWN	APVD
					-	SEE SHEET 1	-	-	-

1. Application and Features:

1-1. This series of terminal block has a built-in self lift wire guard clamp to protect against wire pinching.

1-2. Standard sizes are 2 and 3 way-blocks, but every number of contact can be combined, by simply plugging them together and can be ordered as required**

1-3. Since the wire inlet and the screw are in a 45° position,these terminal blocks are designed specifically to solve poor accessibility problems.—

2. Technical Data:

2-1. Material:

2-1-1. HOUSING: PA 6,6 UL 94 V-0 (Blue).

2-1-2. Contact: Brass(Cu Zn), Tin plated.

2-1-3. Screw: Steel galvanized and chromatized, M2.6

2-2. Electrical:

2-2-1. Current rating: 10 Amps max.

2-2-2. Contact resistance: 20m Ω (Max).

2-2-3. Insulation resistance: 5000MΩ /1000V.

2-2-4. Withstanding Voltage: 1500VAC (1min).
test time =60sec/1pcs

2-2-5. Operation Voltage: 300V AC/DC.

2-2-6. Wire Range: 14-22 AWG.

2-3. Mechanical:

2-3-1. Torque: 4 Kg.cm (Max).

2-3-2. Operating temperature: -55°C to +105°C.

2-3-3. Solderability: 95% coverage (min).
test temperature=230°C±10°C
test time= 3sec ± 0.5sec.

DIMENSIONS:
mm



TOLERANCES UNLESS OTHERWISE SPECIFIED:

0 PLC ± -
1 PLC ± 0.3
2 PLC ± 0.25
3 PLC ± -
4 PLC ± -
ANGLES ± -

MATERIAL

-

FINISH

-

1470-19

(1/15)

Mouser Electronics

Authorized Distributor

Click to View Pricing, Inventory, Delivery & Lifecycle Information:

[TE Connectivity:](#)

[1-1776252-0](#)