

4

3

2

1

THIS DRAWING IS UNPUBLISHED.

RELEASED FOR PUBLICATION

© COPYRIGHT

ALL RIGHTS RESERVED.

LOC

DIST


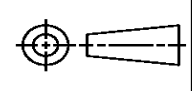
REVISIONS

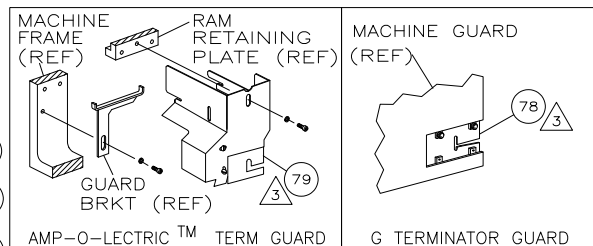
P	LTR	DESCRIPTION	DATE	DWN	APVD
	E1	ECR-16-009824	28JUL2016	GK	SD

REPLACED BY OCEAN STYLE APPLICATOR PART  
NUMBER 2836316-1

FOR REPLACEMENT PARTS FOR APPLICATOR 680877  
REFER TO ADDITIONAL PAGE(S). SPARE PARTS KIT (IF LISTED)  
WILL REMAIN AVAILABLE.

THE REPLACEMENT OCEAN STYLE APPLICATOR HAS THE  
SAME TERMINATOR/PRESS INTERFACE AS APPLICATOR  
680877

THIS DRAWING IS A CONTROLLED DOCUMENT.		DWN	GOPALAKRISHNA HV		 TE Connectivity			
		CHK	GOPALAKRISHNA HV					
DIMENSIONS:		TOLERANCES UNLESS OTHERWISE SPECIFIED:		APVD	NAME			
		0 PLC ± 1 PLC ± 2 PLC ± 3 PLC ± 4 PLC ± ANGLES ±		STOUGH DALE		SIDE FEED HDM APPLICATOR		
				PRODUCT SPEC				
				APPLICATION SPEC				
				WEIGHT				
MATERIAL		FINISH		SIZE	CAGE CODE	DRAWING NO	RESTRICTED TO	
				A3		©- 680877		
CUSTOMER DRAWING				SCALE	SHEET 1 OF 2	REV	E1	



TERMINAL NAME: AUTOMOTIVE SOCKET CONTACT									
AMP P/N		MFG P/N		CRIMP DATA (NON-AMP TERMINAL-MFR SPEC)					
286835		1300263010		PAD LTR		CRIMP HEIGHT		WIRE SIZE	
1437284-9				A		.043 ±.002 [1.09 ±.05mm]		18	
				B		.039 ±.002 [1.0 ±.05mm]		20	
				C		NOT		USED	
				D		NOT		USED	
				CRIMP		SIZE		TYPE	
				WIRE		.070 [1.78mm]		F	
				INSUL		.100 [2.54mm]		F	
								.076Ø MAX	
WIRE STRIP LENGTH		TERM APPL SPEC		FEED		APPL INSTRUCTION		SET UP GAGE	
.156-.187		NONE		.312		408-8040		458637-1	
								L2284	

LOC	DIST	REVISIONS					
A	66	P	LTR	DESCRIPTION	DATE	DWN	APVD
			E	ECR-07-010264	5-2007	MY	TE

-1	LEADMAKER	MECH POST FEED
-2	BENCH MODEL K	MECH PRE FEED
-3	BENCH MODEL G	MECH PRE FEED

REF	REF	REF	—	22594-8	NUT, HEX(1/2-20)	70
REF	REF	REF	—	240628-1	PLATE, ADJUSTMENT	69
REF	REF	REF	—	240626-1	SHAFT, PIVOT	68
REF	REF	REF	—	240633-1	BUSHING	67
REF	REF	REF	—	455680-1	LEVER, INTERMEDIATE	66
REF	REF	REF	—	240629-1	BLOCK, PIVOT	65
REF	REF	REF	—	240632-2	SCREW, ADJ FEED ROD	64
REF	REF	REF	—	240659-3	PIN, CAM ROLLER	63
REF	REF	REF	—	240658-1	ROLLER, CAM	62
REF	REF	REF	—	454398-2	ROD, FEED	61
REF	REF	REF	—	454178-1	GUIDE, FEED ROD	60
REF	REF	REF	—	454220-1	CAP, RAM	59
REF	REF	REF	—	454485-1	HOUSING	58

1	1	1	—	458537-2	PAWL, FEED	56
REF	REF	REF	—	240624-1	PIN, FEED FINGER	55
REF	REF	REF	—	691499-1	SPRING, FEED FINGER	54
REF	REF	REF	—	690541-1	HOLDER, FEED FINGER	53
REF	REF	REF	—	455679-1	LEVER, TERMINAL FEED ARM	52
1	1	1	—	811242-2	BUMPER, HOLDDOWN	51
1	1	1	—	690753-1	SPACER, TONKER	50
1	—	—	—	690602-6	CAM, PRE-FEED 1 5/8 ST	49
—	1	—	—	690602-5	CAM, PRE-FEED 1 1/8 ST	48
—	—	1	—	690501-4	CAM, POST-FEED 1 5/8 ST	47
1	1	1	—	459456-1	APPLICATOR, BASIC (SUBASSY)	46
1	1	1	—	690191-1	PLUG, NYLON	45
1	1	1	—	455673-1	RAM	44
1	1	1	—	690125-1	WASHER, LAMINATED	43
1	1	1	—	690124-1	WASHER, RAM	42
1	1	1	—	7-21002-9	BOLT, CRIMPER(5/16x1.00)	41
1	1	1	—	23241-6	BALL, STEEL	40
1	1	1	—	690170-1	SPRING, COMPRESSION	39
1	1	1	—	690142-1	DISC, INSULATION	38
1	1	1	—	354777-1	WIRE DISC, PLASTIC	37
1	1	1	—	22480-5	WASHER, SPRING	36
1	1	1	—	690212-1	POST, RAM	35
1	1	1	—	690786-6	SUPPORT, TERMINAL	34
REF	REF	REF	—	455675-1	PLATE, BASE	33
1	1	1	—	690432-3	SCREW, ADJUSTMENT	32

REF	REF	REF	—	455689-1	BLOCK, STRIP GUIDE ADJ	30
1	1	1	—	455671-1	PLATE, STRIP GUIDE	29
1	1	1	—	2-455888-0	SPACER, FRONT SHEAR DEP	28
2	2	2	—	1-22284-0	SPRING, DRAG	27
1	1	1	—	690546-1	LEVER, DRAG RELEASE	26
1	1	1	—	240792-1	DRAG, TERMINAL	25
1	1	1	—	6-690504-0	GUIDE, STRIP (REAR)	24
1	1	1	—	690438-1	GUIDE, STRIP (FRONT)	23
—	—	1	—	690472-2	STRIPPER	22
REF	REF	REF	—	4-22284-9	SPRING, FEED RETURN	21

1	1	-	-	691353-1	STRIPPER	19
						18

1	1	1	-	318563-1	GUARD, CHIP, FRONT	16
						15

1	1	1	—	3-22280-3	SPRING, SHEAR	12
1	1	1	—	690461-1	STOP, SHEAR	11
1	1	1	—	690459-1	HOLDER, SHEAR (FRONT)	10
1	1	1	—	1-454276-9	SHEAR, FLOAT (FRONT)	9
1	1	1	—	2-662185-7	ANVIL	8
1	1	1	—	6-240641-5	SPACER, DEPRESSOR (REAR)	7

1	1	1	—	1-455889-4	DEPRESSOR, SHEAR (FRONT)	5
1	1	1	—	238011-7	SPACER, BLOCK CRIMPER	4
1	1	1	—	3-683453-0	CRIMPER, INSULATION	3
1	1	1	—	455888-1	SPACER, CRIMPER	2
1	1	1	—	1-456404-8	CRIMPER, WIRE	1

-3	-2	-1	U/M	PART NO	DESCRIPTION	ITEM NO
----	----	----	-----	---------	-------------	---------

					PARTS LIST
QTY	REQD	PER	ASSY		

ING IS A CONTROLLED DOCUMENT.	OWN M.HERR	14SEP99	Tyco Electronics Corporation	Tyco Electronics Corporation
	CHK	14SEP99		U.S. Pat. 4,746,700

IONS:	TOLERANCES UNLESS OTHERWISE SPECIFIED:	M.HERR	14SEP99	NAME	Harrisburg, PA 17105-3608
HS:		APVD			
		T.FIRIN			SIDE FEED UDM APPLICATION

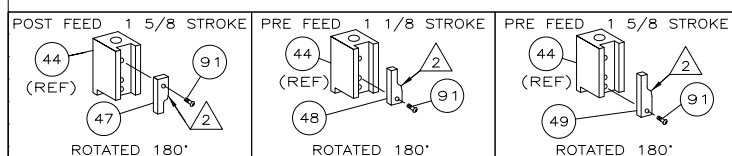
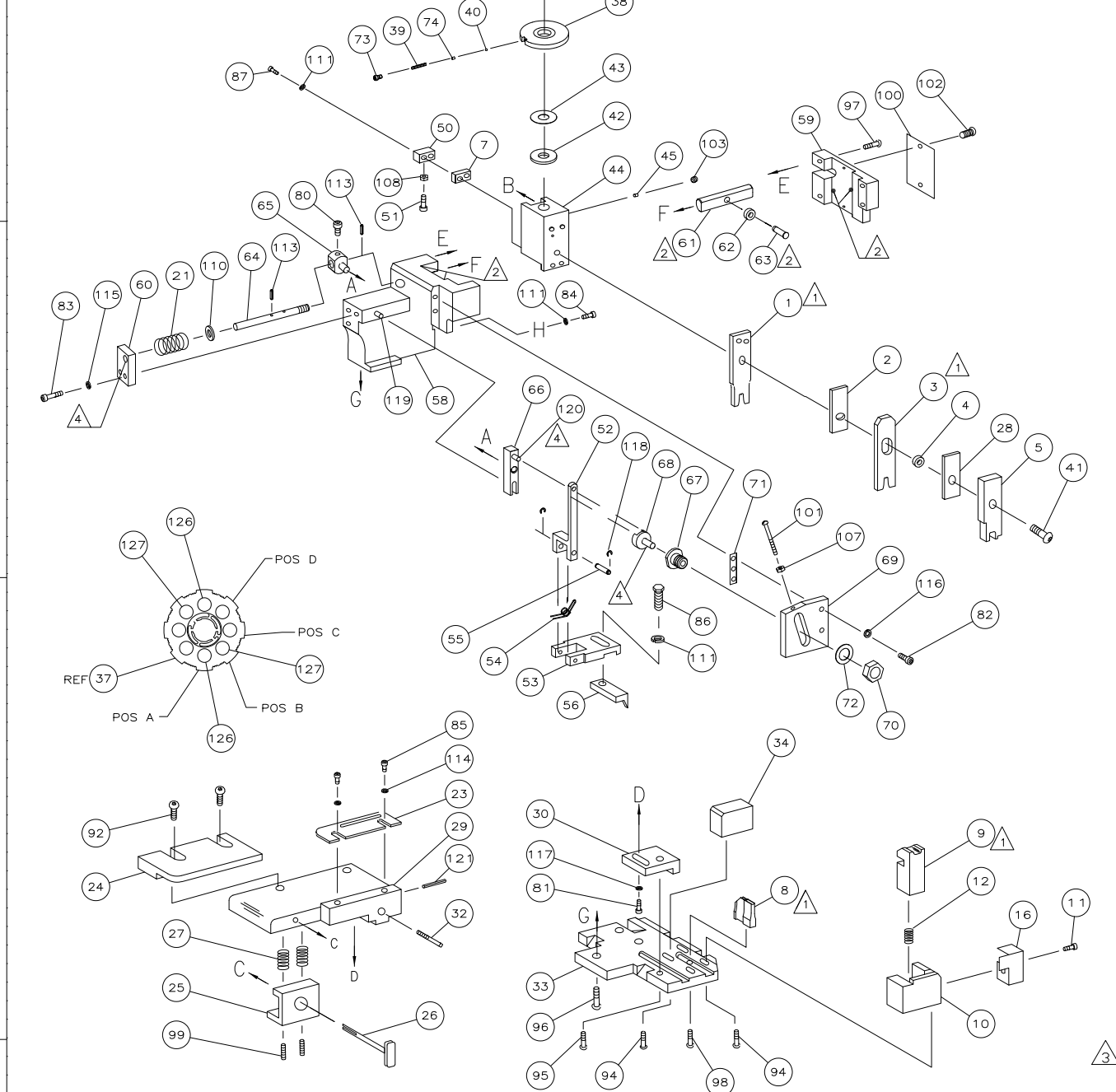
0 PLC	±	-	PRODUCT SPEC	SIDE FEED ADM APPLICATOR
1 PLC	±	-		
2 PLC	±	-	-	-

2	PLC	±	—	APPLICATION SPEC	SIZE	CAGE CODE	DRAWING NO	RESTRICTED T
3	PLC	±	—					
4	PLC	±	—					
ANGLES	±	—	—					

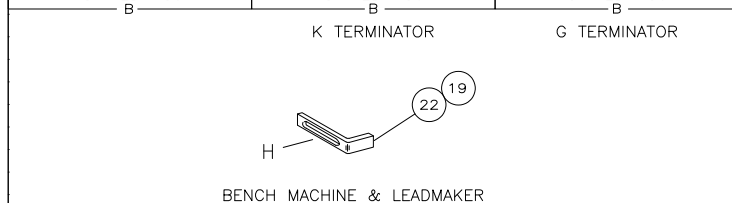
	FINISH	-	WEIGHT	-	A1	00779	C=680877	-
						SCALE	SHEET OF	REV.

	CUSTOMER DRAWING	DATE	—	BY	1	OF	1	FILE	E
--	------------------	------	---	----	---	----	---	------	---

							129
2	2	2	—	4—354779—5	PIN, WIRE DISC (.3215)B		128
2	2	2	—	3—354779—7	PIN, WIRE DISC (.3175)A		127
1	1	1	—	986950—1	WASHER, FLAT PRECISION		125
1	1	1	—	217238—1	GENERAL INSTRUCTION PACKAGE		124
1	1	1	—	4088040	SF APPL INST 408—8040		123
							122
1	1	1	—	4—21028—0	PIN,SLT SPR(Ø.093x.75)ST GDE PL		121
REF	REF	REF	—	1—21030—1	PIN,DOWEL(Ø.187x.50)LEVER		120
REF	REF	REF	—	1—21030—6	PIN,DOWEL(Ø.187x1.25)HOUSING		119
REF	REF	REF	—	21045—3	RING,RET "C"(Ø.187)FD FING PIN		118
1	1	1	—	21024—5	WASHER, LOCK(#10)ADJ BLOCK		117
REF	REF	REF	—	21024—5	WASHER,LOCK(#10)ADJ PLATE		116
REF	REF	REF	—	21024—5	WASHER,LOCK(#10)FEED GDE ROD		115
2	2	2	—	21024—2	WASHER,LOCK(#4)FRONT STP GUIDE		114
REF	REF	REF	—	5—21028—1	PIN,SLT SPR(Ø.125x.50)ADJ ROD		113
							112
4	4	4	—	21024—4	WASHER,LOCK(#8)STRIPPER		111
REF	REF	REF	—	21899—4	WASHER,FLAT(Ø5/16)SCREW ADJ		110
							109
1	1	1	—	21018—5	NUT,HEX(NO.6)HOLDDOWN		108
REF	REF	REF	—	21068—5	NUT,HEX(6—32)FEED ADJ		107
							106
							105
							104
1	1	1	—	21009—2	SCR,SKT SET(1/4—20x.25 LW)RAM		103
2	2	2	—	21017—2	SCR,DRIVE(#2x.19)ID PLATE		102
REF	REF	REF	—	6—23715—5	SCR,PAN HD(6—32x1.50)FEED ADJ		101
1	1	1	—	461264—1	PLATE, IDENTIFICATION		100
2	2	2	—	5—21006—6	SCR,SET(10—32x.75)DRAG		99
1	1	1	—	22733—8	SCR,BHC(8—32x.38 LW)ANVIL		98
REF	REF	REF	—	2—21002—9	SCR,BHC(10—32x.75)CAP		97
REF	REF	REF	—	2—22733—8	SCR,BHC(1/4—20x.62)HOUSING		96
REF	REF	REF	—	2—21002—7	SCR,BHC(10—32x.50)SG ADJ BLOCK		95
4	4	4	—	2—21002—2	SCR,BHC(8—32x.50)TERM H DWN		94
							93
2	2	2	—	2—21002—2	SCR,BHC(8—32x.50)R STP GDE		92
1	1	1	—	1—21002—7	SCR,BHC(6—32x.38)CAM		91
							90
							89
							88
2	2	2	—	2—21000—9	SCR,SHC(8—32x.75)DEP—HOLD		87
1	1	1	—	2—22603—0	SCR,HEX HD(8—32x.31)FEED FINGER		86
2	2	2	—	1—21000—3	SCR,SHC(4—40x.25)F ST GUIDE		85
1	1	1	—	2—21000—7	SCR,SHC(8—32x.50)STRIPPER		84
REF	REF	REF	—	3—21000—7	SCR,SHC(10—32x.75)FEED ROD GD		83
REF	REF	REF	—	3—21000—6	SCR,SHC(10—32x.62)FD ADJ BLK		82
1	1	1	—	3—21000—4	SCR,SHC(10—32x.38)SG ADJ BL		81
REF	REF	REF	—	3—21000—4	SCR,SHC(10—32x.38)PIVOT BLK		80
—	REF	—	—	455749—1	GUARD, WINDOW		79
REF	—	—	—	679532—1	INSERT, GUARD		78
							77
							76
							75
1	1	1	—	690603—1	SPRING, ASSIST		74
1	1	1	—	23030—1	SCR,SHC(6—32x.25 SL)INS DISC		73
REF	REF	REF	—	458109—1	WASHER, SPECIAL		72
REF	REF	REF	—	690517—1	SPACER		71
—3	—2	—1	U/M	PART NO	DESCRIPTION		ITEM NO
				PARTS LIST			
QTY	REQD	PER	ASSY				



1. RECOMMENDED SPARE PARTS.
2. GREASE LIGHTLY.
3. GUARD MUST BE IN PLACE WHEN OPERATING APPLICATOR IN A BENCH MACHINE.
4. LUBRICATE DAILY USING NO. 20 MACHINE OIL.
5. ITEMS WITH QTY OF REF SPECIFIED (EXCEPT ITEMS 78 AND 79) ARE USED ON ITEM 46.
6. SEE 1456216



# Mouser Electronics

Authorized Distributor

Click to View Pricing, Inventory, Delivery & Lifecycle Information:

[TE Connectivity:](#)

[680877-3](#)