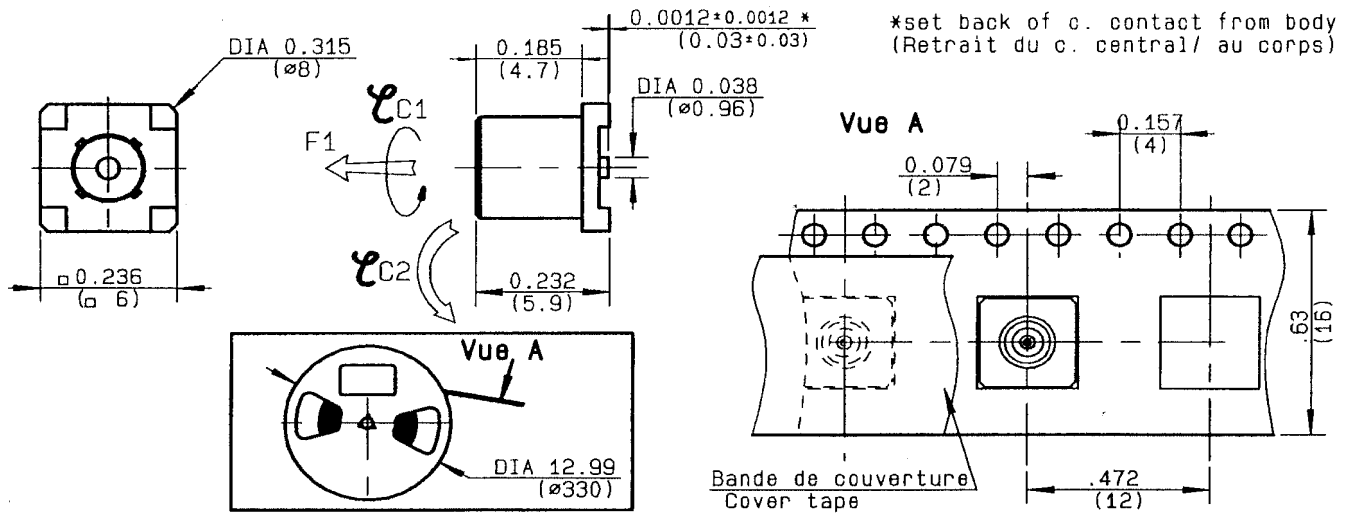


## STRAIGHT FEMALE RECEPTACLE FOR PCB

SMT TYPE - REEL OF 500

**R113.424.020**

Series : MCX



All dimensions are in mm.



| COMPONENTS     | MATERIALS        | PLATINGS (µm)          |
|----------------|------------------|------------------------|
| BODY           | BRASS            | GOLD 0.2 OVER NICKEL 2 |
| CENTER CONTACT | BERYLLIUM COPPER | GOLD 0.5 OVER NICKEL 2 |
| OUTER CONTACT  | -                | -                      |
| INSULATOR      | PTFE             | -                      |
| GASKET         | -                | -                      |
| OTHERS PARTS   | -                | -                      |
| -              | -                | -                      |
| -              | -                | -                      |

Issue : 0412 D

In the effort to improve our products, we reserve the right to make changes judged to be necessary.



**STRAIGHT FEMALE RECEPTACLE FOR PCB****R113.424.020****SMT TYPE - REEL OF 500**

Series : MCX

**PACKAGING**

| Standard   | Unit | Other             |
|------------|------|-------------------|
| <b>500</b> | -    | <b>Contact us</b> |

**SPECIFICATION****ELECTRICAL CHARACTERISTICS**

|                                 |                            |                                |
|---------------------------------|----------------------------|--------------------------------|
| Impedance                       | <b>50</b>                  | $\Omega$                       |
| Frequency                       | <b>0-6</b>                 | GHz                            |
| VSWR                            | <b>1.05</b> + <b>0.050</b> | x F(GHz) Maxi                  |
| Insertion loss                  | <b>0.03</b>                | $\sqrt{F}(\text{GHz})$ dB Maxi |
| RF leakage                      | - ( <b>NA</b> )            | - F(GHz)) dB Maxi              |
| Voltage rating                  | <b>335</b>                 | Veff Maxi                      |
| Dielectric withstanding voltage | <b>1000</b>                | Veff mini                      |
| Insulation resistance           | <b>1000</b>                | M $\Omega$ mini                |

**ENVIRONMENTAL**

|                       |                 |                    |
|-----------------------|-----------------|--------------------|
| Operating temperature | <b>-55/+155</b> | $^{\circ}\text{C}$ |
| Hermetic seal         | <b>NA</b>       | Atm.cm3/s          |
| Panel leakage         | <b>NA</b>       |                    |

**OTHERS CHARACTERISTICS**

Assembly instruction

Others :

Drawing page 1:

FORCE F1:90N-TORQUES C1:45Ncm-C2:80Ncm

**MECHANICAL CHARACTERISTICS**

|                            |                        |
|----------------------------|------------------------|
| Center contact retention   |                        |
| Axial force – Mating end   | <b>10</b> N mini       |
| Axial force – Opposite end | <b>10</b> N mini       |
| Torque                     | <b>NA</b> N.cm mini    |
| Recommended torque         |                        |
| Mating                     | <b>NA</b> N.cm         |
| Panel nut                  | <b>NA</b> N.cm         |
| Mating life                | <b>500</b> Cycles mini |
| Weight                     | <b>0.600</b> g         |

Issue : 0412 D

In the effort to improve our products, we reserve the right to make changes judged to be necessary.

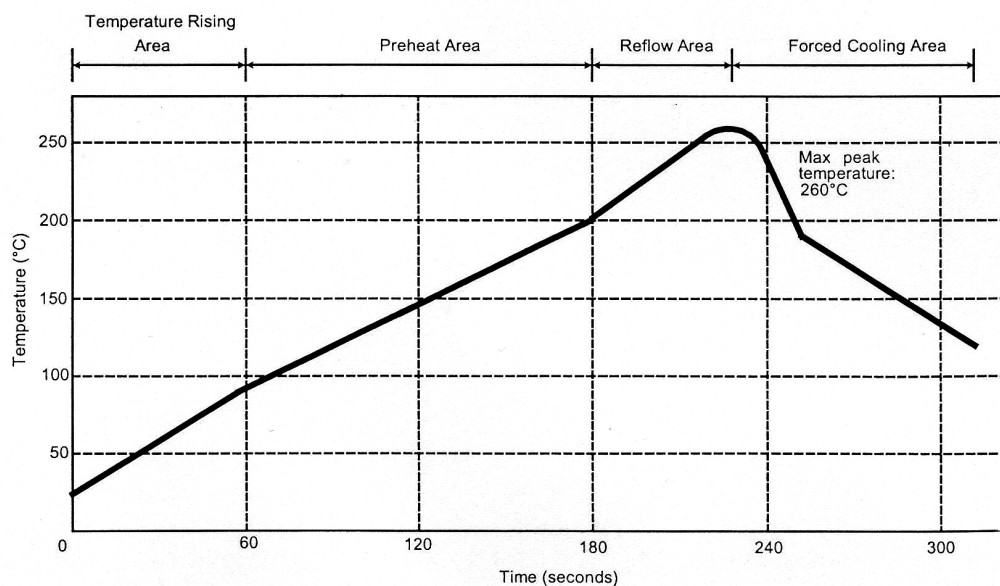


**STRAIGHT FEMALE RECEPTACLE FOR PCB****SMT TYPE - REEL OF 500****R113.424.020**

Series : MCX

**SOLDER PROCEDURE**

1. Deposit solder paste 'Sn Ag4 Cu0.5' on mounting zone by screen printing application.  
We recommend a low residue flux. We advise a thickness of 150 microns mini. ( .006 inch mini ).  
Verify that the edges of the zone are clean.
2. Placement of the receptacle on the mounting zone with an automatic machine of 'pick and place' type. Aspiration port (see page 4) centered into body and push against it.  
A video camera is recommended for positioning of the component . Adhesive agents must not be used on the receptacle.
3. Soldering by infra-red reflow.  
Below please find ,the typical profile to use.
4. Cleaning of printed circuit boards.
5. Verification of solder joints and position of the component by visual inspection.

**TEMPERATURE PROFIL**

| Parmeter                         | Value     | Unit   |
|----------------------------------|-----------|--------|
| Temperature rising Area          | 1 - 4     | °C/sec |
| Max Peak Temperature             | 260       | °C     |
| Max dwell time @260°C            | 10        | sec    |
| Min dwell time @235°C            | 20        | sec    |
| Max dwell time @235°C            | 60        | sec    |
| Temperature drop in cooling Area | -1 to - 4 | °C/sec |
| Max dwell time above 100°C       | 420       | sec    |

**Issue : 0412 D**

In the effort to improve our products, we reserve the right to make changes judged to be necessary.

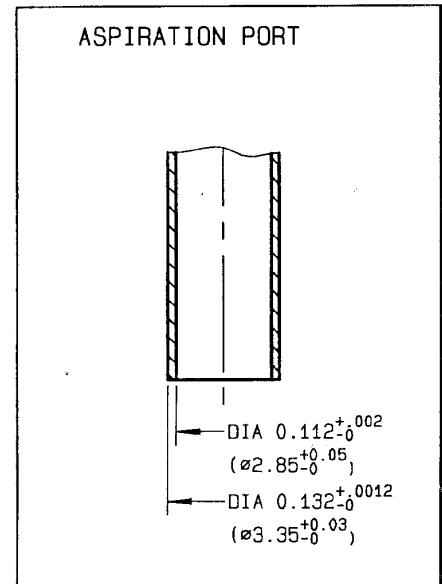
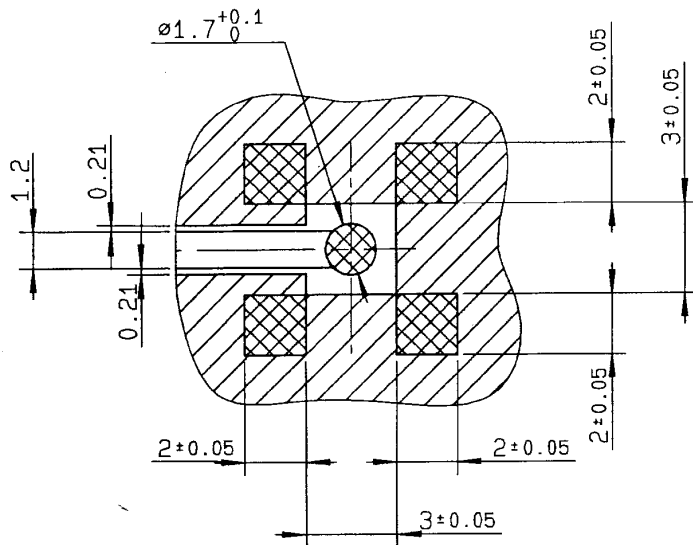


**STRAIGHT FEMALE RECEPTACLE FOR PCB**

**SMT TYPE - REEL OF 500**

**R113.424.020**

Series : MCX



**COPLANAR LINE**

Pattern and signal are on the same side  
Thickness of PCB : .063 (1.6 mm)  
The material of PCB is the epoxy resin  
of glass fabrics bacs. (Er = 4.8)  
The solder resist should be printed  
except for the land pattern on the PCB.

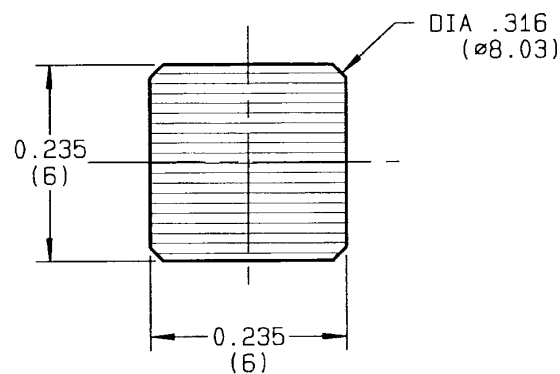


Pattern



Land for solder paste

**SHADOW OF MCX RECEPTACLE  
FOR VIDEO CAMERA**



Issue : 0412 D

In the effort to improve our products, we reserve the right to make changes judged to be necessary.



# Mouser Electronics

Authorized Distributor

Click to View Pricing, Inventory, Delivery & Lifecycle Information:

Radial:

[R113424020](#)