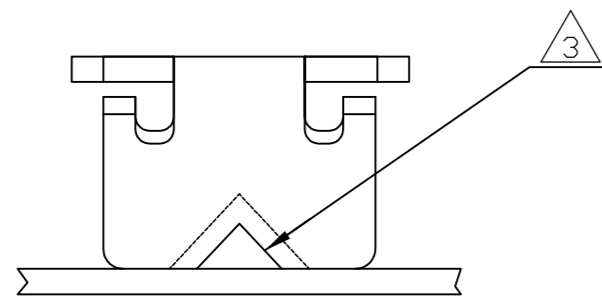


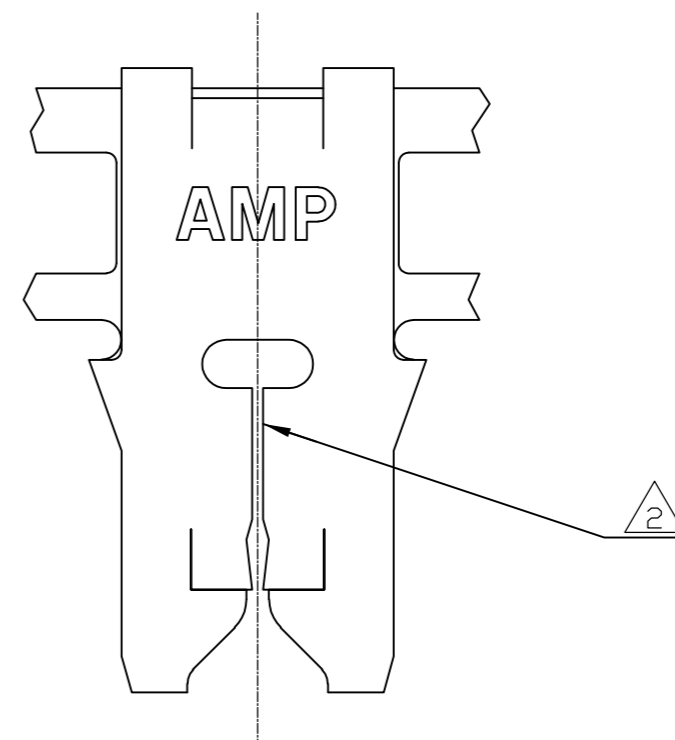
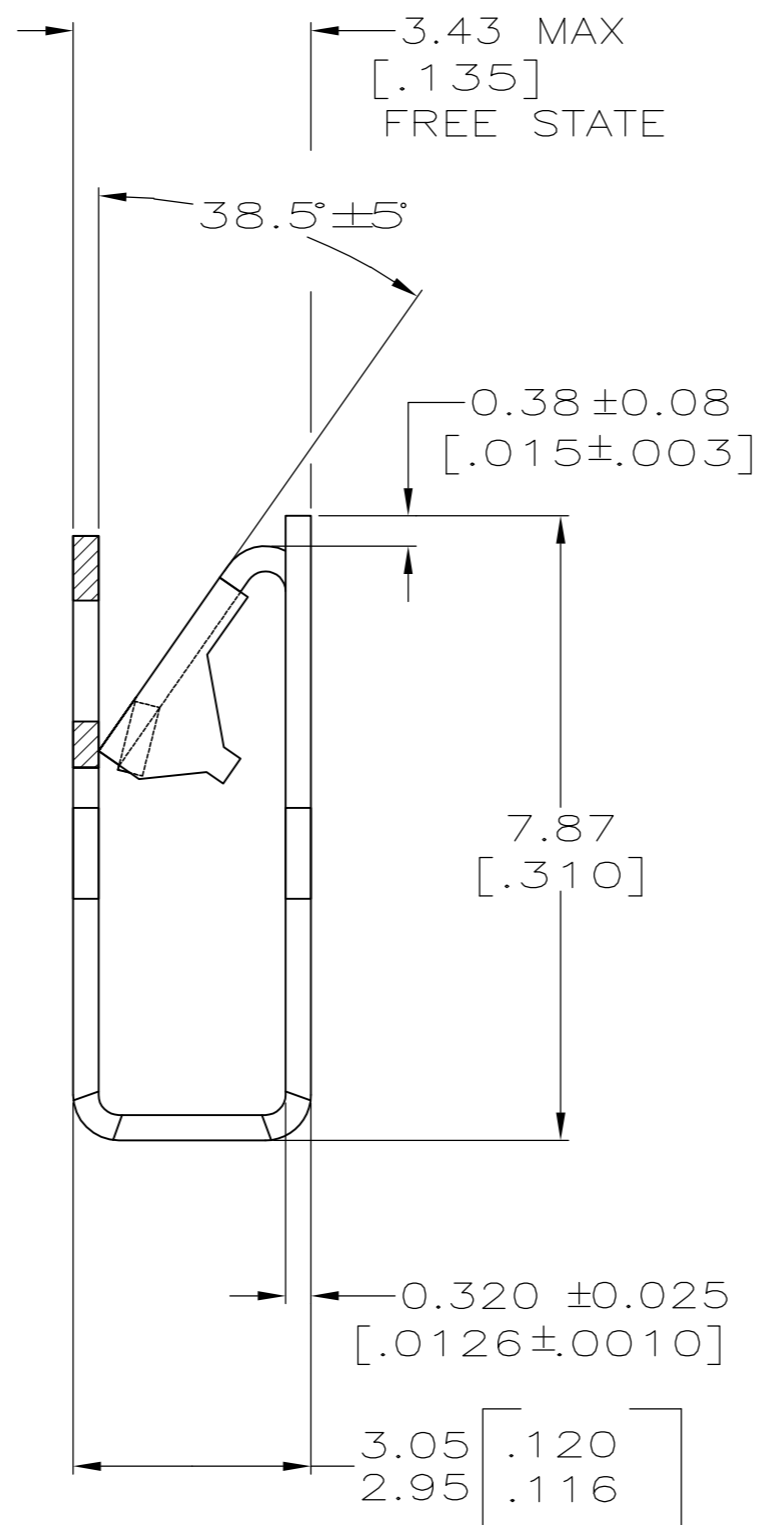
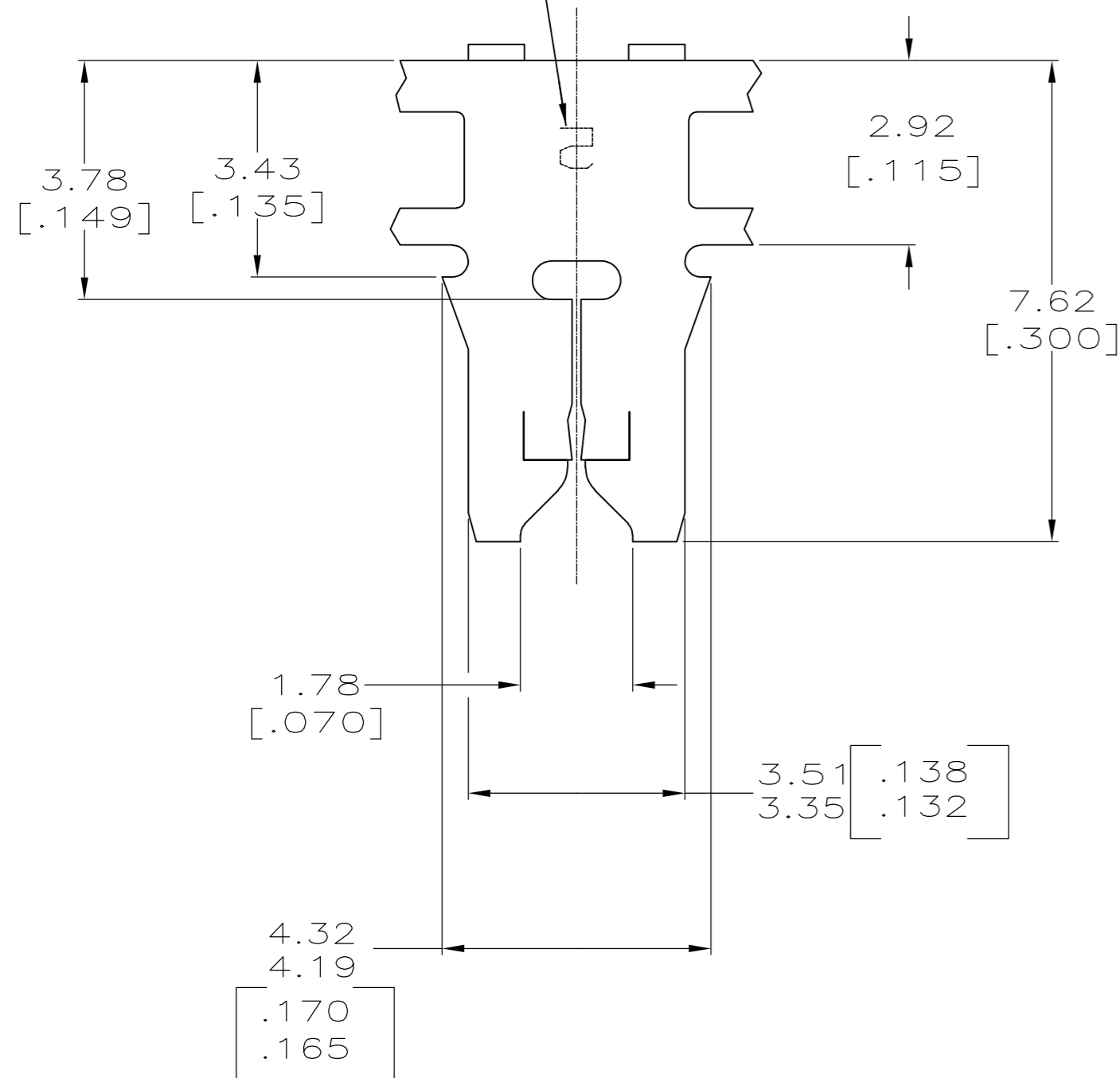
THIS DRAWING IS UNPUBLISHED. RELEASED FOR PUBLICATION  
 © COPYRIGHT - By - ALL RIGHTS RESERVED.

LOC	DIST	REVISIONS			
P	LTR	DESCRIPTION	DATE	DWN	APVD
AF	50	A1	ECR-13-016672	25OCT13	PKS RRP

- 1 CONTINUOUS STRIP ON REELS WITH TERMINALS LOCATED ON  $5.59 \pm 0.08$  [ $.220 \pm .003$ ] CENTERS
- △2 SLOT TERMINATES EITHER A SINGLE OR DOUBLE MAGNET WIRE OF THE SAME SIZE AND TYPE. COPPER RANGE:  $0.23-0.32 \text{mm}^2$  [#31-#28]
- △3 POKE-IN ACCEPTS A  $0.5-0.9 \text{mm}$  [#20#18] AWG SOLID OR FUSED STRANDED LEAD WIRE.



IDENTIFICATION NUMBER 5 FOR MAGNET WIRE RANGE



1217234-1  
PART NUMBER

THIS DRAWING IS A CONTROLLED DOCUMENT.		DWN MICHAEL S. FEHER 05NOV1999																				
DIMENSIONS: INCHES		CHK KURT RANDOLPH 09NOV1999																				
TOLERANCES UNLESS OTHERWISE SPECIFIED:		APVD KURT RANDOLPH 09NOV1999	NAME KURT RANDOLPH																			
<table border="0"> <tr><td>0 PLC</td><td>±</td><td>-</td></tr> <tr><td>1 PLC</td><td>±</td><td>-</td></tr> <tr><td>2 PLC</td><td>±</td><td>0.25[.010]</td></tr> <tr><td>3 PLC</td><td>±</td><td>-</td></tr> <tr><td>4 PLC</td><td>±</td><td>-</td></tr> <tr><td>ANGLES</td><td>±</td><td>-</td></tr> </table>		0 PLC	±	-	1 PLC	±	-	2 PLC	±	0.25[.010]	3 PLC	±	-	4 PLC	±	-	ANGLES	±	-	PRODUCT SPEC 108-2012	TERMINAL, POKE-IN, 300 SERIES MAG-MATE™	
0 PLC	±	-																				
1 PLC	±	-																				
2 PLC	±	0.25[.010]																				
3 PLC	±	-																				
4 PLC	±	-																				
ANGLES	±	-																				
MATERIAL BRASS		APPLICATION SPEC 114-2046	SIZE A2	CAGE CODE 00779																		
FINISH TIN PLATE		WEIGHT -	DRAWING NO 1217234	RESTRICTED TO -																		
CUSTOMER DRAWING			SCALE 10:1	SHEET 1 of 1																		
			REV A1																			