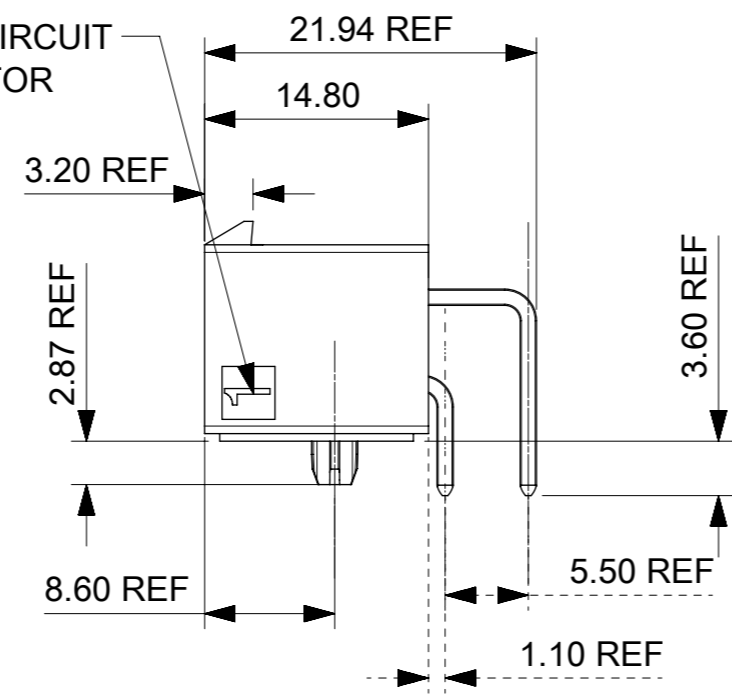
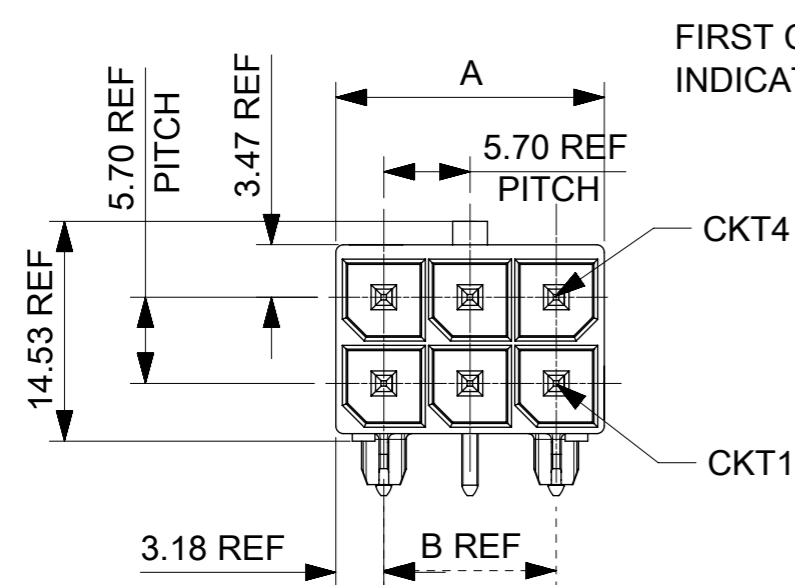
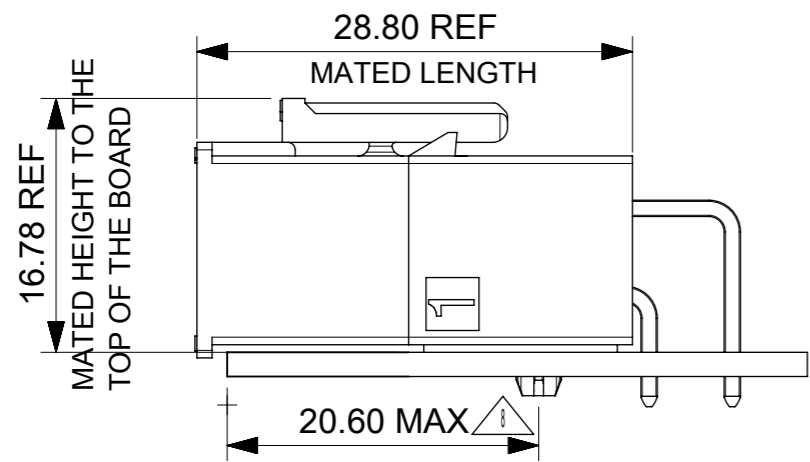
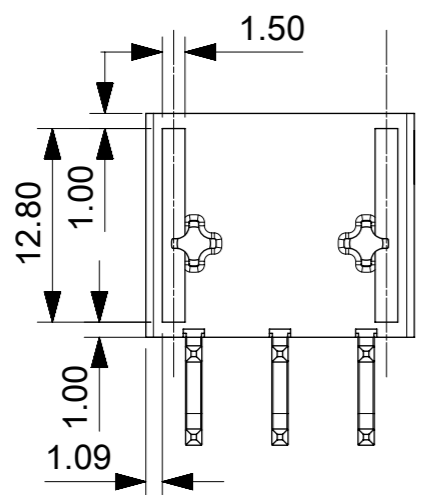


76825-0006 SHOWN

CKT SIZE		PART NO.	PLATING	DIM A	DIM B	DIM C
2	X	76825-0002	TIN	8.35	N/A	9.35
4	X	76825-0004	TIN	12.05	N/A	13.05
6	X	76825-0006	TIN	17.75	11.4	18.75
8	X	76825-0008	TIN	23.45	17.1	24.45
10	X	76825-0010	TIN	29.15	22.8	30.15
12	X	76825-0012	TIN	34.85	28.5	35.45
2		172064-0002	15 GOLD	8.35	N/A	9.35
4		172064-0004	15 GOLD	12.05	N/A	13.05
6		172064-0006	15 GOLD	17.75	11.4	18.75
8		172064-0008	15 GOLD	23.45	17.1	24.45
10		172064-0010	15 GOLD	29.15	22.8	30.15
12		172064-0012	15 GOLD	34.85	28.5	35.45
2		172064-1002	30 GOLD	8.35	N/A	9.35
4		172064-1004	30 GOLD	12.05	N/A	13.05
6		172064-1006	30 GOLD	17.75	11.4	18.75
8		172064-1008	30 GOLD	23.45	17.1	24.45
10		172064-1010	30 GOLD	29.15	22.8	30.15
12		172064-1012	30 GOLD	34.85	28.5	35.45

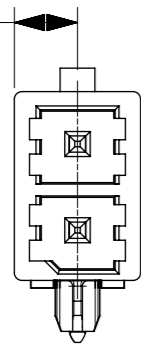


- NOTES:
- MATERIAL:  
HOUSING LCP, UL94V-0, GLOW WIRE CAPABLE PER IEC-60335-1 5TH EDITION, COLOR: BLACK.  
TERMINAL: HIGH CONDUCTIVITY COPPER.
  - TERMINAL PLATING:  
(TIN) 1.52 MICROMETER MIN (60 MICROINCH MIN) REFLOWED MATTE TIN OVER  
1.27 MICROMETER MIN (50 MICROINCH MIN) MIN NICKEL OVERALL.  
(15 GOLD) 0.38 MICROMETER MIN (15 MICROINCH MIN) SELECTIVE GOLD ON CONTACT AREA  
WITH 2.54 MICROMETER MIN (100 MICROINCHES MIN) SELECTIVE TIN ON SOLDER AREA  
BOTH OVER 1.27 MICROMETER MIN (50 MICROINCHES MIN) NICKEL OVERALL.  
(30 GOLD) 0.76 MICROMETER MIN (30 MICROINCH MIN) SELECTIVE GOLD ON CONTACT AREA  
WITH 2.54 MICROMETER MIN (100 MICROINCHES MIN) SELECTIVE TIN ON SOLDER AREA  
BOTH OVER 1.27 MICROMETER MIN (50 MICROINCHES MIN) NICKEL OVERALL.
  - PRODUCT SPECIFICATION PS-76823-100.
  - PACKAGING: TRAY PACKED PER MOLEX SPECIFICATION PK-76825-0000.
  - PART MATES WITH MOLEX PART NUMBER 170001 AND 171692 SERIES.
  - APPLICATION SPECIFICATION: AS-76823-100
  - PARTS CONFORM TO CLASS "B" REQUIREMENTS OF COSMETIC SPECIFICATION PS-45499-002.
  - TO AVOID INTERFERENCE BETWEEN RECEPTACLE AND PCB, HEADER MUST BE PLACED WITHIN 20.6 MAX FROM EDGE OF PCB AS SHOWN FOR 4 THROUGH 12 CIRCUITS. FOR 2 CIRCUIT PARTS THIS DIMENSION IS 15.1 MAX.



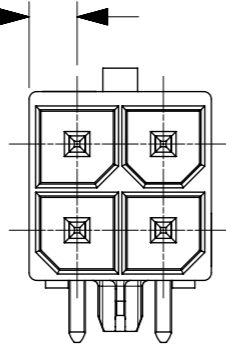
THIS DRAWING CONTAINS INFORMATION THAT IS PROPRIETARY TO MOLEX ELECTRONIC TECHNOLOGIES, LLC AND SHOULD NOT BE USED WITHOUT WRITTEN PERMISSION											
QUALITY SYMBOLS	2016/11/15	2017/02/07	GENERAL TOLERANCES (UNLESS SPECIFIED)		DIMENSION UNITS	SCALE					
			ANGULAR TOL ± 0.5 °		MM	2:1					
▽A = 0	EC NO: 112454 DRWN: YXZHENG CHK'D: AYIN APPR: AYIN	REV: D8	4 PLACES ±	±	DRWN BY	DATE	<b>MEGA-FIT</b> R/A HEADER ASSY 2-12 CKT				
▽E = 0			3 PLACES ±		JDFOX	2015/04/17					
▽F = 0			2 PLACES ±	±	CHK'D BY	DATE	<b>PRODUCT CUSTOMER DRAWING</b>				
▽ = 0			1 PLACE ±		APPR BY	DATE					
▽C = 0			0 PLACES ±	±	FSMITH	2015/04/17	SERIES	MATERIAL NUMBER	CUSTOMER		
▽ = 0			DRAFT WHERE APPLICABLE MUST REMAIN WITHIN DIMENSIONS		DRAWING SIZE		THIRD ANGLE PROJECTION		76825	SEE CHART	GENERAL MARKET
▽ = 0			A3				DOCUMENT NUMBER	DOC TYPE	DOC PART	SHEET NUMBER	
							SD-76825-0100	PSD	000	1 OF 3	

4.18 REF



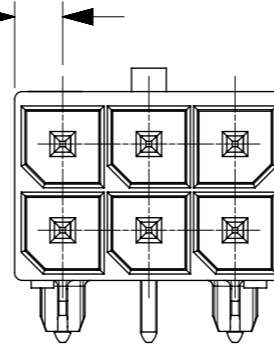
2CKT

3.18 REF

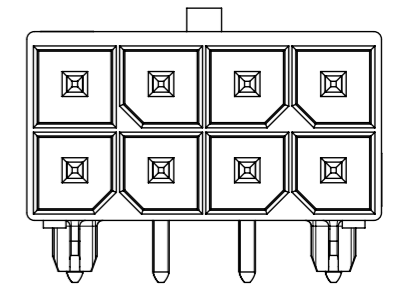


4CKT

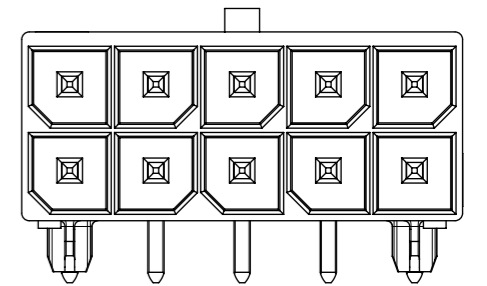
3.18 REF



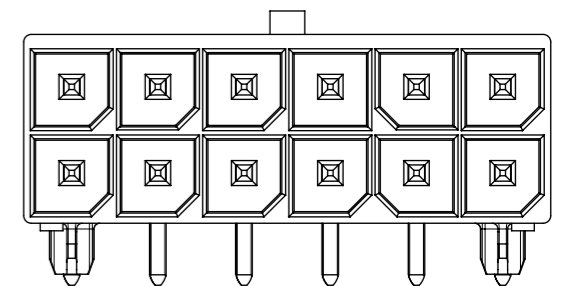
6CKT



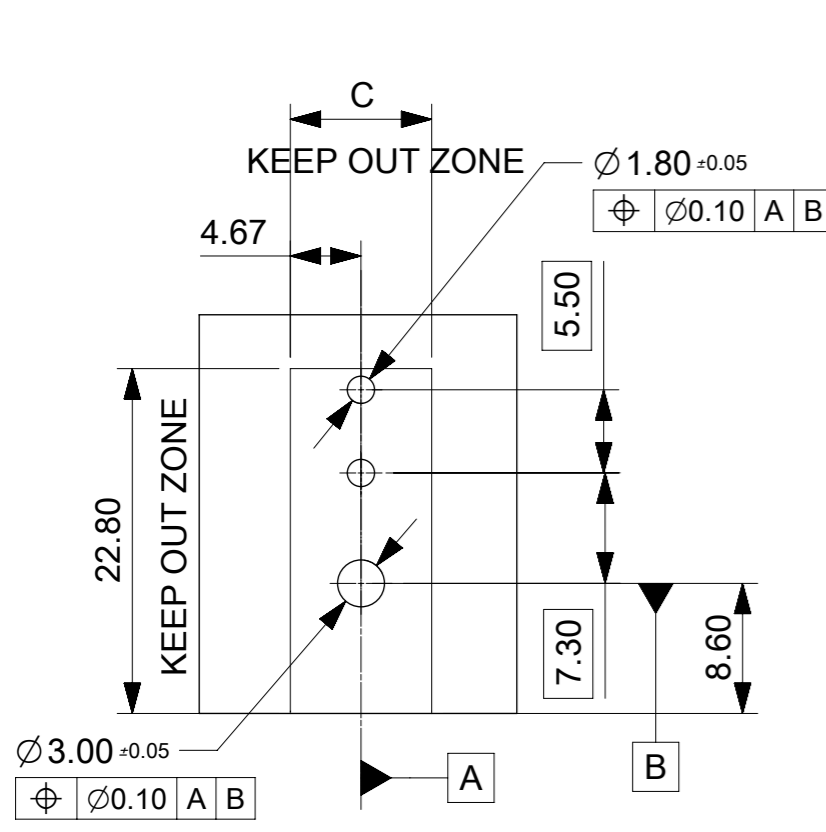
8CKT



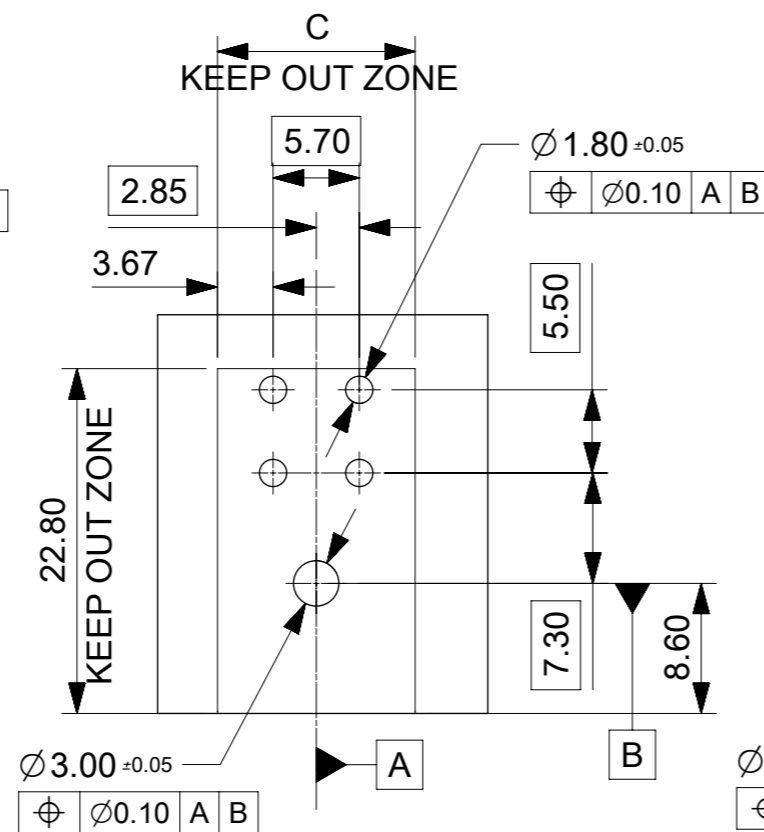
10CKT



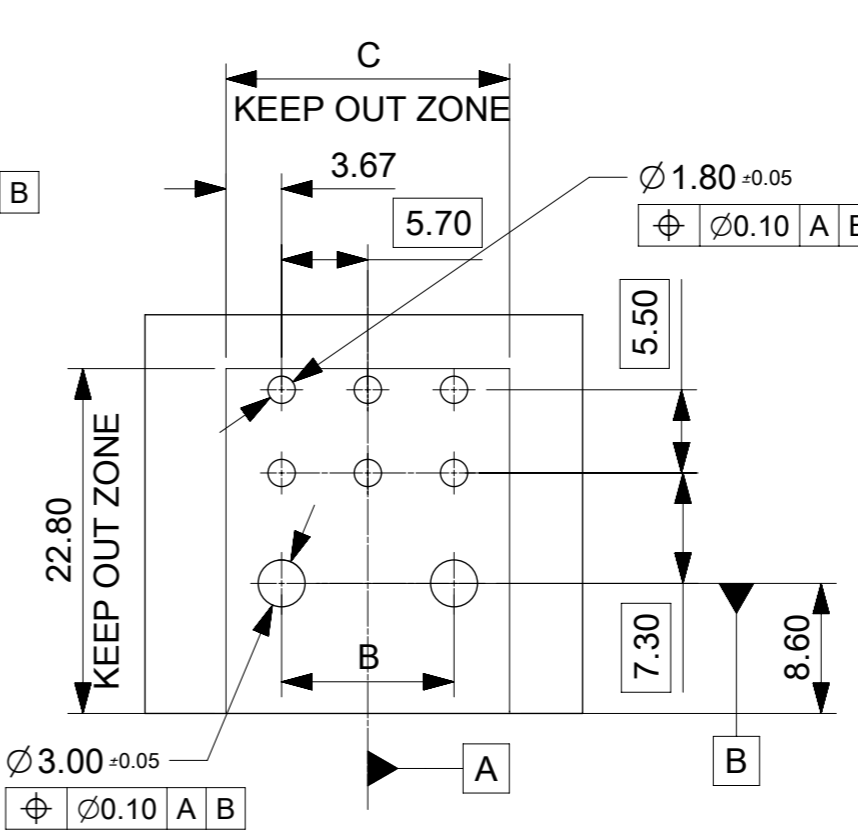
12CKT



PCB LAYOUT: COMPONENT SIDE  
RECOMENDED PCB THICKNESS: 1.58 MM/.062 IN  
TO 2.36 MM/.093 IN



PCB LAYOUT: COMPONENT SIDE  
RECOMENDED PCB THICKNESS: 1.58 MM/.062 IN  
TO 2.36 MM/.093 IN



PCB LAYOUT: COMPONENT SIDE  
RECOMENDED PCB THICKNESS: 1.58 MM/.062 IN  
TO 2.36 MM/.093 IN

<b>QUALITY SYMBOLS</b> 	THIS DRAWING CONTAINS INFORMATION THAT IS PROPRIETARY TO MOLEX ELECTRONIC TECHNOLOGIES, LLC AND SHOULD NOT BE USED WITHOUT WRITTEN PERMISSION				
	EC NO: 112454 DRWN: YXZHENG CHK'D: AYIN APPR: AYIN	2016/11/15 2017/02/07	<b>GENERAL TOLERANCES (UNLESS SPECIFIED)</b> ANGULAR TOL ± 0.5 ° 4 PLACES ± 3 PLACES ± 2 PLACES ± 0.25 1 PLACE ± 0 PLACES ± DRAFT WHERE APPLICABLE MUST REMAIN WITHIN DIMENSIONS	DIMENSION UNITS: <b>MM</b> SCALE: <b>2:1</b> DRWN BY: <b>JDFOX</b> DATE: <b>2015/04/17</b> CHK'D BY: _____ DATE: _____ APPR BY: <b>FSMITH</b> DATE: <b>2015/04/17</b> DRAWING SIZE: <b>A3</b> THIRD ANGLE PROJECTION:	  <b>MEGA-FIT</b> <b>R/A HEADER ASSY 2-12 CKT</b>  <b>PRODUCT CUSTOMER DRAWING</b>
		SERIES: <b>76825</b> MATERIAL NUMBER: <b>SEE CHART</b> CUSTOMER: <b>GENERAL MARKET</b>			
		DOCUMENT NUMBER: <b>SD-76825-0100</b> DOC TYPE: <b>PSD</b> DOC PART: <b>000</b> SHEET NUMBER: <b>2 OF 3</b>			

RELEASE STATUS	RELEASE DATE
----------------	--------------