

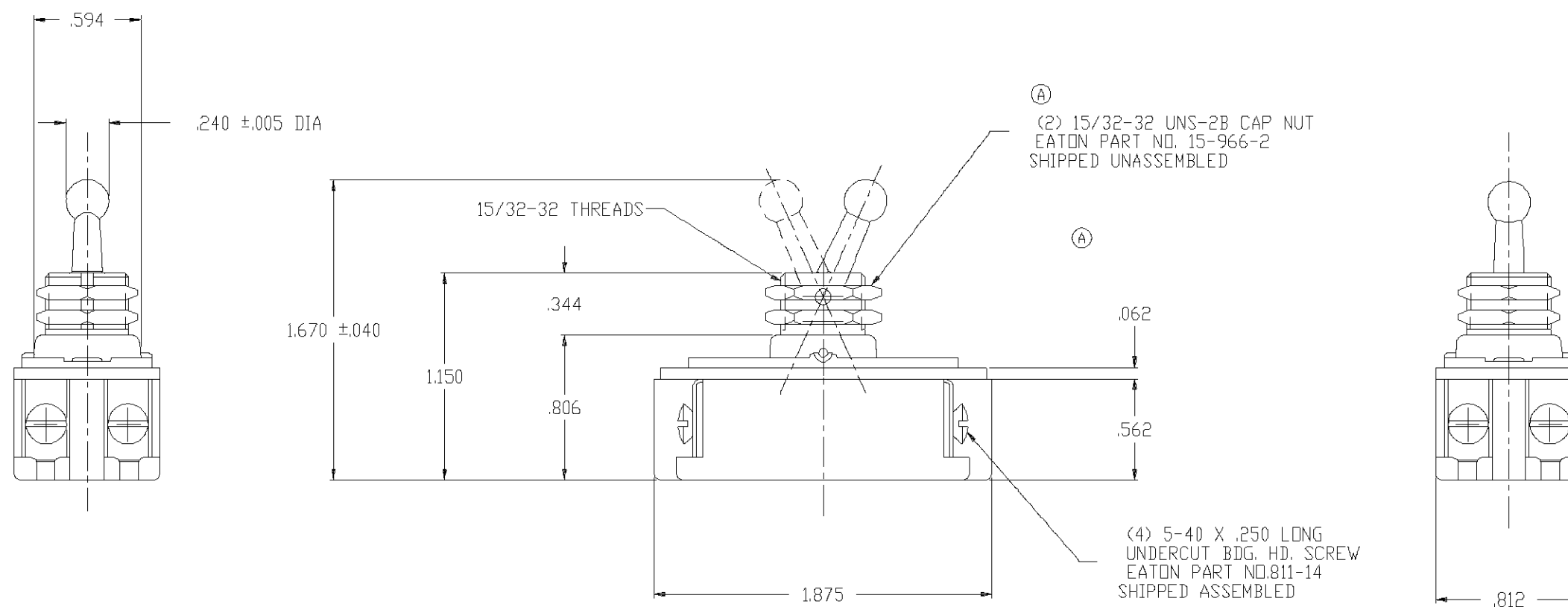
B

91-285

.068 $\begin{smallmatrix} +.003 \\ -.004 \end{smallmatrix}$ X .038 DEEP KEYWAY

NOTE:

1. UNLESS OTHERWISE SPECIFIED ALL TOLERANCES TO BE $\pm .016$.



ORDER NO. 93719950

A	REMOVED 15-192 NUT NOTE, ADDED "(2)" TO 15-966-2 NUT NOTE.	6/29/94	D
B			E
C			F

THIRD ANGLE PROJECTION

EATON

TITLE: DOUBLE POLE 8A 250V/16A 125V ONE HOLE MTD. TOOL HANDLE TOGGLE SWITCH			
DR.	W. LEONARD	1/16/92	SURFACE COATING
CHK.	WESTEMEIER	1/22/92	SCALE
APP.	M.R. DUMMER	1/22/92	DO NOT SCALE DRAWING

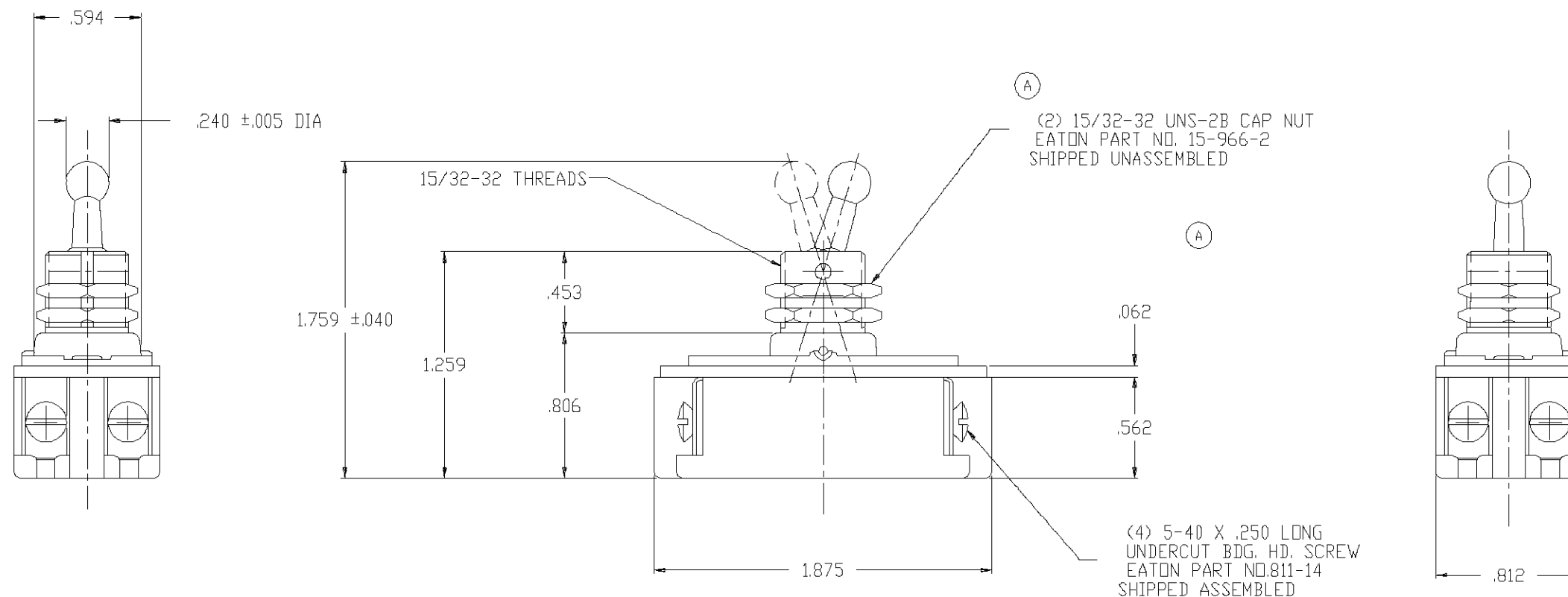
B

91-284

.068 $\begin{smallmatrix} +.003 \\ -.004 \end{smallmatrix}$ X .038 DEEP KEYWAY

NOTE:

1. UNLESS OTHERWISE SPECIFIED ALL TOLERANCES TO BE $\pm .016$.



ORDER NO. 93719950

A	REMOVED 15-192 NUT NOTE, ADDED "(2)" TO 15-966-2 NUT NOTE.	6/29/94	D
B			E
C			F



EATON

TITLE: DOUBLE POLE 8A 250V/16A 125V ONE HOLE MTD. TOOL HANDLE TOGGLE SWITCH			
DR.	W. LEONARD	1/16/92	SURFACE COATING
CHK.	WESTEMEIER	1/22/92	SCALE
APP.	M.R. DUMMER	1/22/92	DO NOT SCALE DRAWING

Mouser Electronics

Authorized Distributor

Click to View Pricing, Inventory, Delivery & Lifecycle Information:

[TE Connectivity:](#)

[7320K13](#)