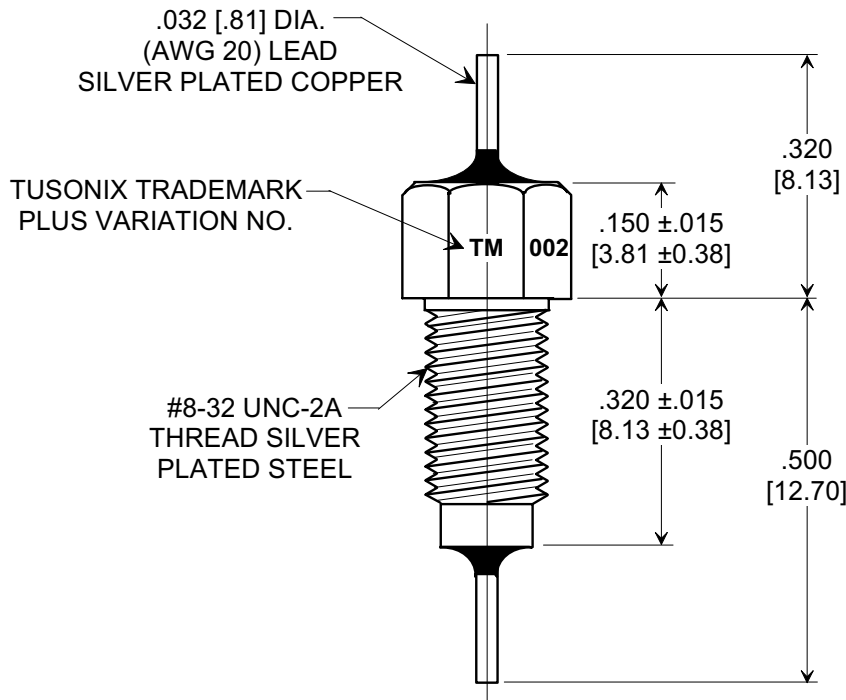
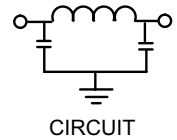
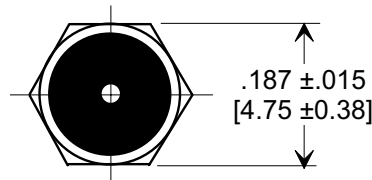
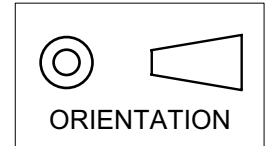


MARKETING SALES DRAWING
DIMENSIONS IN INCHES - DO NOT SCALE THIS DRAWING
DIMENSIONS IN METRIC []

Electrical Testing
per Tusonix standard
test plans and Mil-Std-202
Test Methods.



NOTES:

- TUSONIX STANDARD PART NUMBER: 4251-002.
TUSONIX RoHS COMPLIANT PART NUMBER: 4251-002 LF.
CUSTOMER MUST SPECIFY STANDARD OR RoHS PART NUMBER WHEN ORDERING.
- PART MARKING: TRADEMARK AND VARIATION NUMBER ON HEX FLATS.
STANDARD PART: BLACK INK. RoHS PART: GREEN INK.
- SUPPLIED WITH SILVER PLATED COPPER ALLOY HEX NUT AND INTERNAL TOOTH LOCK WASHER.

MIN. CAP.	125°C WORKING VOLTAGE	CURRENT Vdc	IR MIN.	DWV	MINIMUM NO LOAD INSERTION LOSS (dB) @ 25°C PER MIL-STD-220				
					1 MHz	10 MHz	100 MHz	1 GHz	10 GHz
12,000 pF	125 VDC	10 A	10 G Ω	500 VDC	5	28	65	70	70

X-2015 Rev-0 REVISION RECORD Original Release C.O. 6611 DIM'S REVISED, TITLE CHNGD. E.C. 05-26-92 6667 RDN TO COMP FMT & ADDED .015 TOL 3 PLCS. S.M. 02-28-02 20020415-1-01 NOTE 1 ADDED, & STEEL WAS BRASS, & TITLE REVISED L.E. 06-25-02 20020415-1-01 ADDED NOTES 1-2. S.M. 10-06-05 20050927-7-04	0	MULTILAYER BUSHING STYLE EMI FILTER Title MULTILAYER BUSHING STYLE EMI FILTER Drawn S.M. 02-28-02 Scale 4 X Approved T.C. 02-28-02 A 4251-002
	1	
	2	
	3	
	4	
--TOLERANCES-- Unless Otherwise Specified DECIMAL ± .031 [0.79] ANGLES ±		
TUSONIX TUCSON, ARIZONA		

Mouser Electronics

Authorized Distributor

Click to View Pricing, Inventory, Delivery & Lifecycle Information:

[Tusonix / CTS:](#)

[4251-002LF](#)