

SIZE	A DIM	B DIM	C DIM $\pm .0050$	(L DIM)
05	.050	.233	.3085	(.100)
09	.100	.333	.4085	(.200)
15	.175	.483	.5585	(.350)
25	.300	.733	.8085	(.600)
37	.450	1.033	1.1085	(.900)
51	.625	1.383	1.4585	(1.250)

1. SHELL OPTIONS (TO BE SPECIFIED IN NANONICS PART NUMBER):
METAL: 6061-T6 ALUMINUM, ELECTROLESS NICKEL PLATED PER MIL-C-26074 (STANDARD) OR GOLD PLATED PER MIL-G-45204
303 STAINLESS STEEL, PASSIVATED PER SAE-AMS-QQ-P-35
INSULATOR MATERIAL FOR ALL METAL SHELLS IS LIQUID CRYSTAL POLYMER (LCP) PER MIL-M-24519 OR PER ASTM D5138
PLASTIC: LIQUID CRYSTAL POLYMER (LCP) PER MIL-M-24519 OR PER ASTM D5138



2. STANDARD 1.0 X 0.25mm JACKSCREW AND MOUNTING THREADS ARE SHOWN FOR REFERENCE ONLY AND MUST BE SPECIFIED IN THE NANONICS PART NUMBER WHEN REQUIRED. 1.2 X 0.25mm THREADS ALSO AVAILABLE.

3. MOUNTING HARDWARE IS AVAILABLE WITH THIS CONFIGURATION (NOT SHOWN). HARDWARE MUST BE SPECIFIED IN THE NANONICS PART NUMBER. CONSULT TE CONNECTIVITY FOR DETAILS.

4. SMT LEADS ARE BeCu, TIN LEAD PLATED 60/40 COMPOSITION PER SAE-AMS-P-81728

5. NANONICS TERMINATION CODE: L2

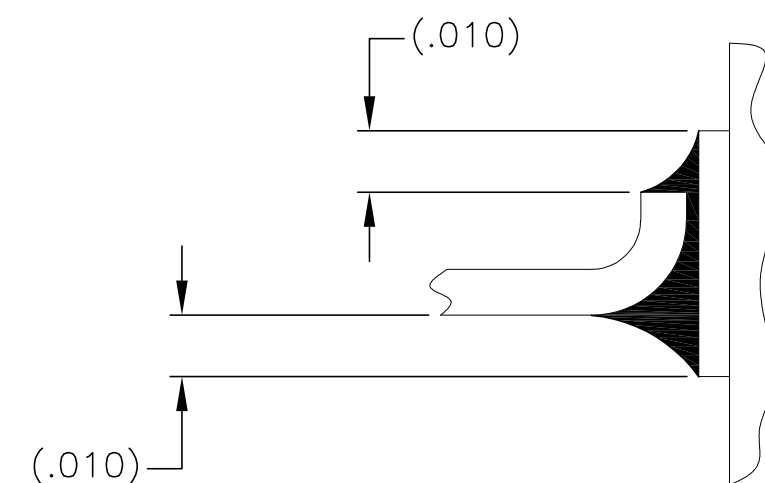
6. THIS DRAWING PREVIOUSLY IDENTIFIED AS NANONICS N10138/130

THIS DRAWING IS A CONTROLLED DOCUMENT.		DWN M. STORRY 02-15-01		 TE Connectivity			
		CHK S. KAIN 02-15-01					
DIMENSIONS: INCHES		TOLERANCES UNLESS OTHERWISE SPECIFIED:		RECEPTACLE ASSEMBLY, HORIZONTAL SURFACE MOUNT, SINGLE ROW DUAL OBE, PLASTIC OR METAL			
		APVD —				NAME	
		PRODUCT SPEC —					
		APPLICATION SPEC —					
0 PLC ± — 1 PLC ± — 2 PLC ± .010 3 PLC ± .005 4 PLC ± — ANGLES ± ± 1°		—		SIZE A2			
MATERIAL SEE NOTES		FINISH SEE NOTES		CAGE CODE 00779			
		WEIGHT —		DRAWING NO C-1589462			
		CUSTOMER DRAWING		RESTRICTED TO —			
				SCALE 8:1 SHEET 1 of 2 REV T1			

589462



B

A



A diagram of a rectangular block, likely representing a component in a mechanical assembly. A vertical dimension line is shown on the left side of the block, with arrows at both ends indicating the height. The dimension is labeled as (.283).

SIZE 09 SHOWN FOR REFERENCE

THIS DRAWING IS A CONTROLLED DOCUMENT.		DWN M. STORRY 02-15-01		 TE Connectivity					
		CHK S. KAIN 02-15-01							
DIMENSIONS: INCHES		TOLERANCES, UNLESS OTHERWISE SPECIFIED:		NAME RECEPTACLE ASSEMBLY, HORIZONTAL SURFACE MOUNT, SINGLE ROW DUAL OBE, PLASTIC OR METAL					
		APVD —							
		PRODUCT SPEC —							
		APPLICATION SPEC —							
0 PLC ± — 1 PLC ± — 2 PLC ± .010 3 PLC ± .005 4 PLC ± — ANGLES ± ± 1°		SIZE		CAGE CODE	DRAWING NO	RESTRICTED TO			
MATERIAL —		FINISH —		WEIGHT —		A2	00779	C-1589462	—
CUSTOMER DRAWING						SCALE 8:1	SHEET 2 of 2	REV T1	

Mouser Electronics

Authorized Distributor

Click to View Pricing, Inventory, Delivery & Lifecycle Information:

[TE Connectivity:](#)

[SSM051L2HN](#)