

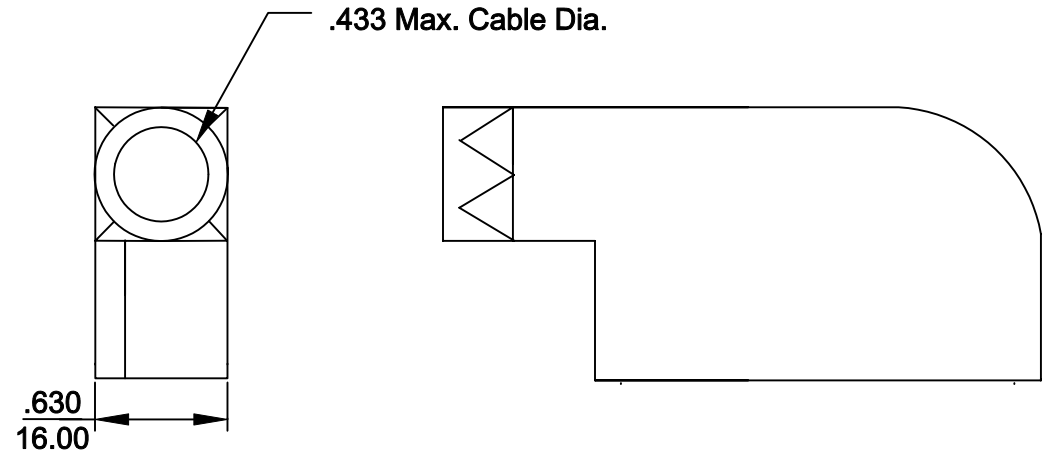
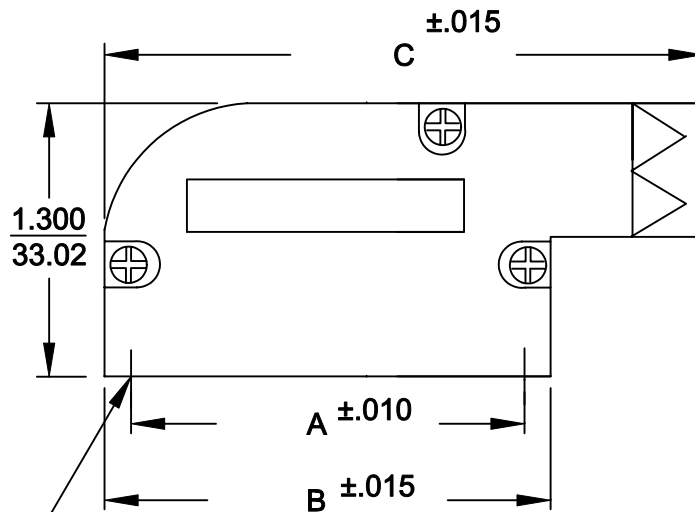
DESCRIPTION: **981 SERIES R/A BACKSHELL**

981-XXX-XXXRXX1

BACKSHELL KIT INCLUDES:

- (2) BACKSHELL HALVES
- (3) HOUSING SCREWS
- (1) GROMMET TREE
(NON-CONDUCTIVE GROMMETS)

SERIES _____
 POSITIONS _____
 009
 015
 025
 MATERIAL _____
 030 = ZINC
 COLOR: _____
 12 = NICKEL OVER COPPER
 PUT-UPS _____
 1 = KIT



SIZE	A	B	C
9	.984	1.240	1.850
15	1.312	1.555	2.323
25	1.852	2.106	2.835

4-40 INTERNAL THREADS

MATERIAL: DIE-CAST ZINC ALLOY
NICKEL PLATED
RoHS COMPLIANT



THESE DRAWINGS AND SPECIFICATIONS ARE THE PROPERTY OF NorComp AND SHALL NOT BE REPRODUCED, COPIED OR USED AS THE BASIS FOR THE MANUFACTURE OR SALE OF APPARATUS WITHOUT WRITTEN PERMISSION.

DRAWN: **PAM JENKINS**

DATE: **7-28-05**

CHECKED:

DATE:

NorComp

SCALE _____ SHEET OF _____ REV **1**

DWG NO. **981-0XX-030R121**

Mouser Electronics

Authorized Distributor

Click to View Pricing, Inventory, Delivery & Lifecycle Information:

[NorComp:](#)

[981-025-030R121](#) [981-009-030R121](#) [981-015-030R121](#)