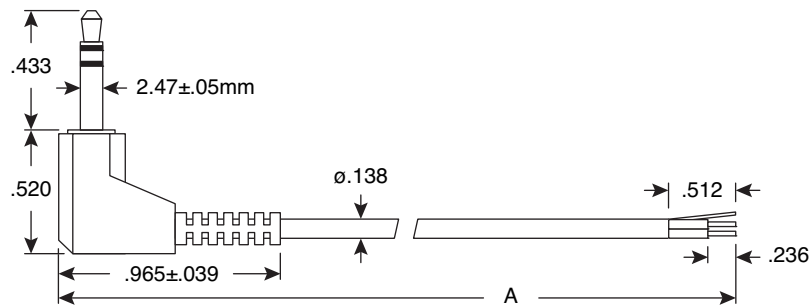
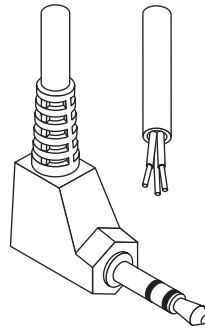


Cable Assemblies

172-2010, 172-2110, 172-2310



Cable Assemblies



DIMENSIONS: IN
(Except where noted.)

SPECIFICATIONS

Type:	2.5mm Stereo Plug to 2 Conductors Stripped & Tinned, Shielded
Voltage Rating:	DC 24V 500mA
Conductor:	26AWG, Stranded Copper Wire with PVC Jacket
Shielding:	Wrapped Copper Wire
Body:	PVC
Plug:	Brass
Tip Insulators:	ABS
Jacket:	Black PVC
Wire Color Coding:	Plug Tip (White Conductor), Ring (Red Conductor), Sleeve (Shielding)

Mouser Stock No.	Length "A" (In.)
172-2310	36
172-2010	72
172-2110	120

Date Last Revised: 11-22-10

Available from Mouser Electronics
1-800-346-6873
www.mouser.com

KC-300307

172-2010, 172-2110, 172-2310

Mouser Electronics

Authorized Distributor

Click to View Pricing, Inventory, Delivery & Lifecycle Information:

[Kobiconn:](#)

[172-2310](#) [172-2110](#) [172-2010](#)