

C. Wesley 11-20-91
 DESCRIPTION APP'D./DATE REV

SAFETY ORGANIZATION(S)

THIS FILTER HAS BEEN FORMALLY RECOGNIZED, CERTIFIED OR APPROVED BY THE LISTED AGENCY. THEREFORE, ALL TEST/REQUIREMENTS SPECIFIED IN THE LATEST REVISION OF THE FOLLOWING AGENCY STANDARDS HAVE BEEN MET.

UL 544
 CSA 22.2, NO. 0, 0, 4, B
 VDE 0565-3, 0625

OPERATING SPECIFICATIONS

LINE VOLTAGE/CURRENT,
 10 AMP., 120/250 VAC
 10 AMP./40°C, 250 VAC
 50-60Hz
 LINE FREQUENCY,
 30°C
 MAX. CASE RISE & RATED CURRENT,
 2μA at 120V 60 Hz
 MAX. LEAKAGE CURRENT, EACH
 LINE TO GROUND
 5μA at 250V 50 Hz
 OPERATING AMBIENT TEMP. RANGE,
 -10°C TO +40°C @ RATED CURRENT, I_r
 IN AN AMBIENT, T_a, HIGHER THAN 40°C, THE MAXIMUM OPERATING
 CURRENT, I_o, IS AS FOLLOWS:

$$I_o = I_r \sqrt{\frac{85 - T_a}{45}}$$

RELIABILITY SPECIFICATIONS

STORAGE TEMPERATURE,
 -40°C TO +85°C
 HUMIDITY,
 21 DAYS @ 40°C 95% RH
 CURRENT OVERLOAD TEST,
 6 TIMES RATED CURRENT FOR 8 SECONDS

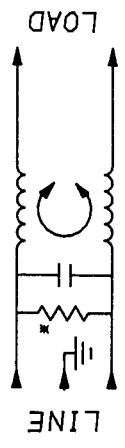
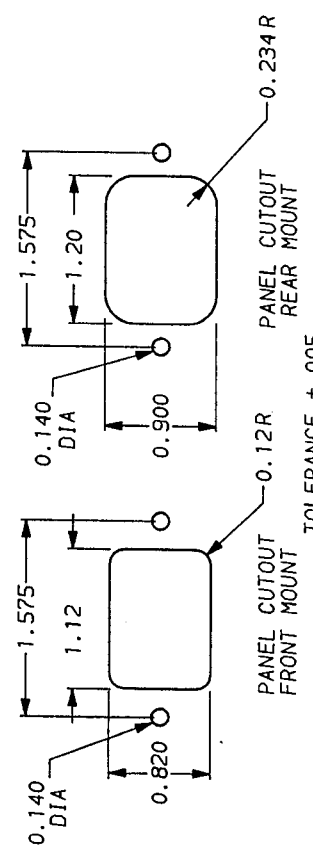
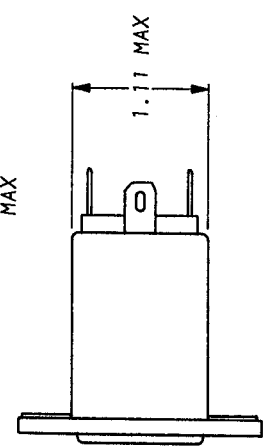
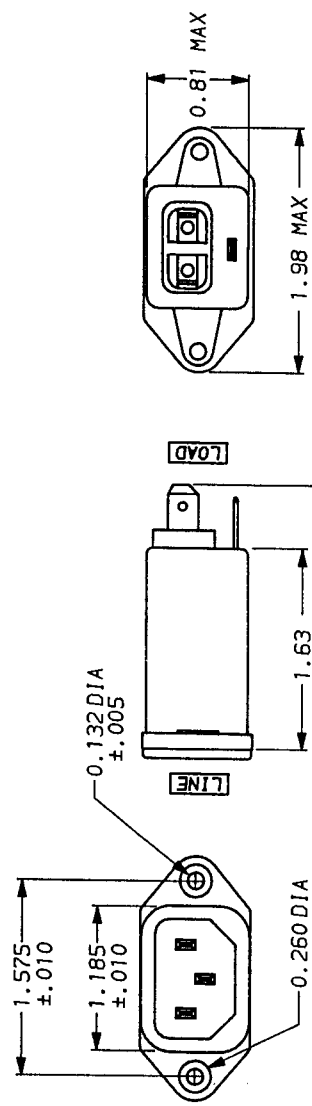
TEST SPECIFICATIONS

INDUCTANCE,
 .35 mH NOMINAL
 CAPACITANCE, (MEASURED @ 1 KHz, 0.25 VAC MAX., 25°C ±1°C)
 ZERO
 LINE TO GROUND,
 LINE TO LINE,
 .047μF ±20%
 DISCHARGE RESISTOR,
 1.5 MΩ
 LINE/GROUND AND LINE/LINE
 INSULATION RESISTANCE
 (H/O DISCHARGE RESISTOR)
 6000 MΩ (MIN) AT 100 VDC
 20°C AND 50% RH

RECOMMENDED RECEIVING INSPECTION HIPOTL.

LINES TO GROUND,
 1500 VAC FOR 1 MINUTE
 LINE TO LINE,
 1450 VDC FOR 1 MINUTE

FILTER APPROVAL,
 THE BEST WAY TO SELECT AND QUALIFY A FILTER IS FOR YOUR ENGINEERING
 TO TEST THE UNIT IN YOUR EQUIPMENT.



50n - 50n (MINIMUM) INSERTION LOSS									
FREQUENCY MHZ	.15	.50	1	5	10	30			
COMMON dB	3	8	12	12	12	12			
DIFF. dB	1	10	18	30	31	31			

This document is proprietary to CORCOM INC. and is not to be reproduced nor used for manufacturing purposes except on CORCOM's order or prior written consent.



POWER LINE FILTER

DATE 9-19-91
 REV. NTS
 ORIGINATOR CFW
 DRG. NO. 10EBH1.01

*RESISTOR ADDED TO PRODUCT BUILT AFTER 3-30-92 (9212).

Mouser Electronics

Authorized Distributor

Click to View Pricing, Inventory, Delivery & Lifecycle Information:

[TE Connectivity:](#)

[10EBH1](#)