

4

3

2

1

THIS DRAWING IS UNPUBLISHED.

RELEASED FOR PUBLICATION

SEP, 1994.

COPYRIGHT 1994 BY TYCO ELECTRONICS CORPORATION.

ALL RIGHTS RESERVED.

LOC

DIST

REVISIONS

変更

DESCRIPTION

DATE

DWN

APVD

P

LTR

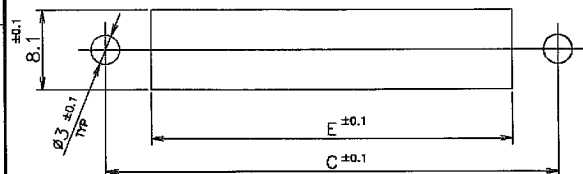
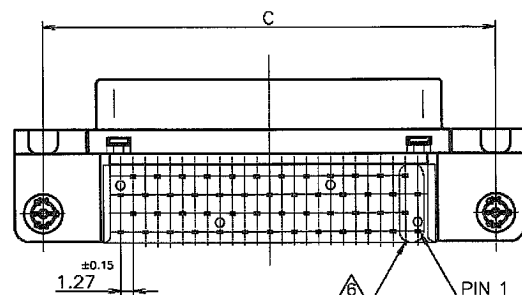
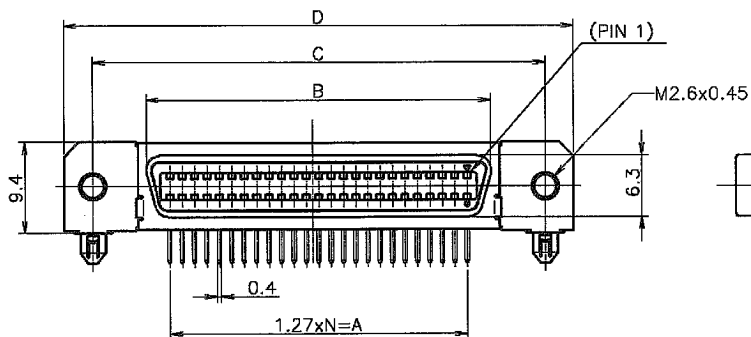
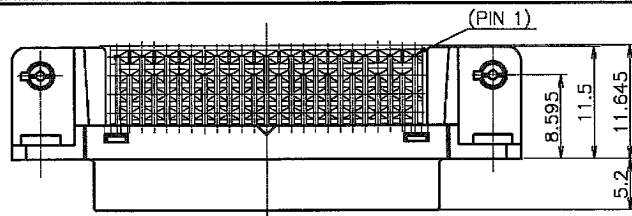
A

REVISED ECR-05-017946

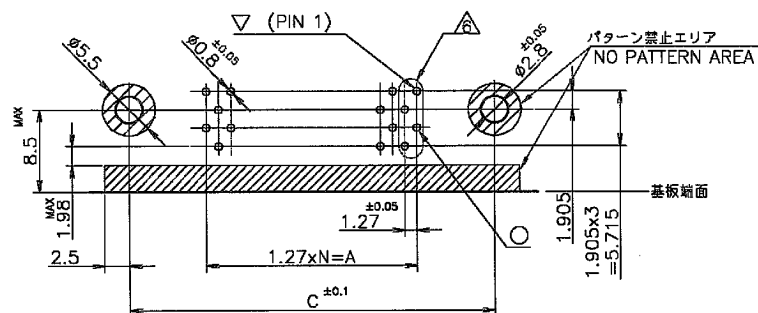
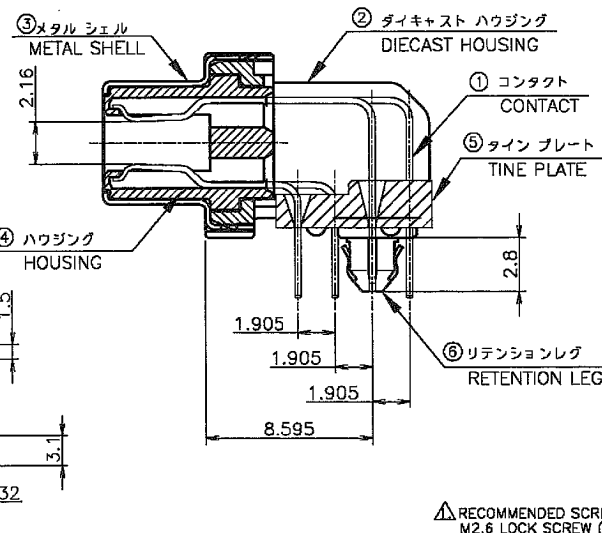
14DEC05

L.2

I.E



推奨パネルカット寸法  
RECOMMENDED PANEL CUTOUT  
(厚さ 2mm 最大)  
THK;2mm MAX



推奨基板穴あけ寸法  
RECOMMENDED PC BOARD MOUNTING DIMMENSION

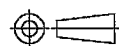
コネクタ取付面  
COMPONENT SIDE

- △ RECOMMENDED SCREW SIZE:  
M2.6 LOCK SCREW (P/N:179715-1).  
2. RECOMMENDED P.C. BOARD THICKNESS:  
1.6mm (REF.)  
3. CONNECTOR TO BE MATED: 175677  
4. INSERTION FORCE OF RETENTION LEG  
TO P.C.B.: 2.2kg MAX/CONNECTOR.  
5. RETENTIVITY OF RETENTION LEG TO  
P.C.B.: 0.5kg MIN/CONNECTOR.  
△ POST/HOLE PATTERN AS SHOWN ON  
THIS END FOR ALL POSITION.

項目 ITEM	材料及仕上げ MATERIAL & FINISH
①	COPPER ALLOY NICKEL UNDER PLATE ALL OVER. CONTACT AREA: Au PLATING SOLDER TINE AREA, TIN PLATE
②	ZINC NICKEL PLATING
③	STEEL 0.25 NICKEL PLATE OVER COPPER UNDERPLATE
④	THERMO-PLASTIC COLOR: BLACK (UL: 94V-0)
⑤	
⑥	COPPER ALLOY TIN PLATE OVER NICKEL UNDERPLATE

49	68.85	84.15	78.25	67.23	62.23	0.1μ	100	1-5179717-9
39	56.15	71.45	65.55	54.53	49.53	0.1μ	80	1-5179717-8
N	E	D	C	B	A	Au PL.	POS.	PART NO.

THIS DRAWING IS A CONTROLLED DOCUMENT.

DIMENSIONS:  
単位: ㎜MATERIAL  
材料

SEE NOTE

TOLERANCES UNLESS  
OTHERWISE SPECIFIED:  
一般公差

0 PLC ± 0.3  
1 PLC ± 0.3  
2 PLC ± 0.3  
3 PLC ± 0.3  
4 PLC ± 0.3  
ANGLES ± 3°

FINISH  
仕上

SEE NOTE

DWN LEO ZHOU 28SEP04

CHK STEVEN YAO 28SEP04

APVD I. ENOMOTO 28SEP04

PRODUCT SPEC

製品規格 188-60043

APPLICATION SPEC

取付適用規格

WEIGHT

CUSTOMER DRAWING

Tyco  
ElectronicsTyco Electronics AMP K.K.  
Kawasaki, Japan

RECEPTACLE HDR ASSY (3.1mm)  
RETENTION LEG TYPE  
STANDARD CHAMP.050 SERIES (II)

SIZE

CAGE CODE

DRAWING NO  
番号

A3 00779 5179717

RESTRICTED TO

SCALE  
尺度 2:1SHEET  
1 OF 1

REV A

# Mouser Electronics

Authorized Distributor

Click to View Pricing, Inventory, Delivery & Lifecycle Information:

[TE Connectivity:](#)

[1-5179717-0](#)