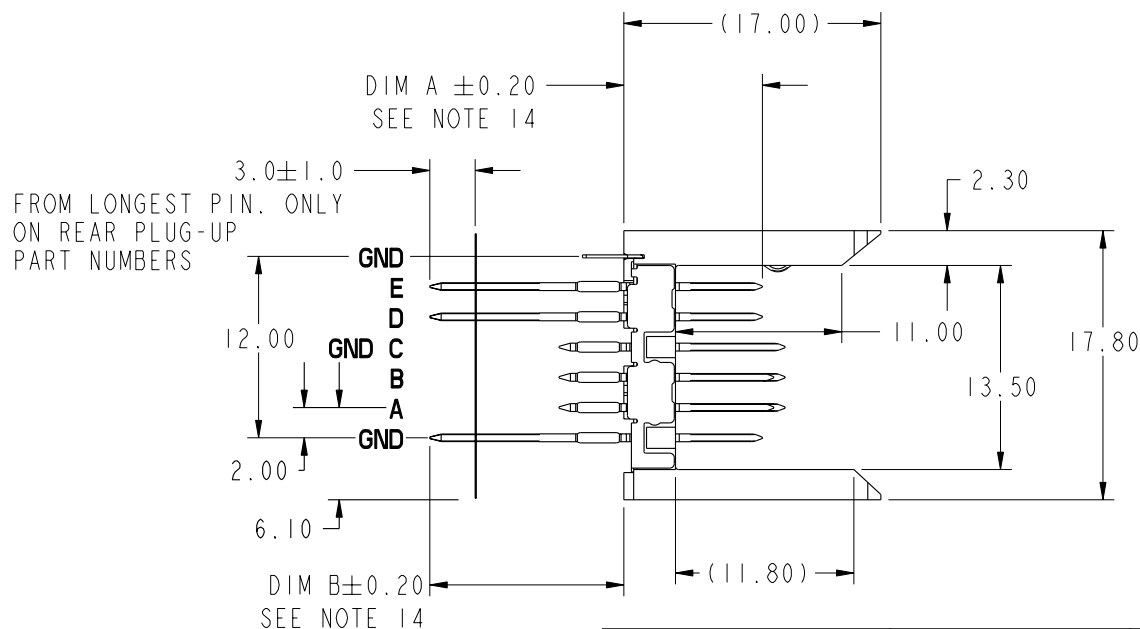
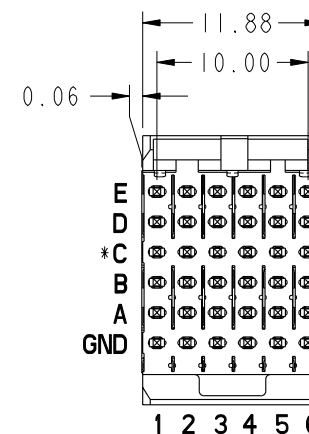
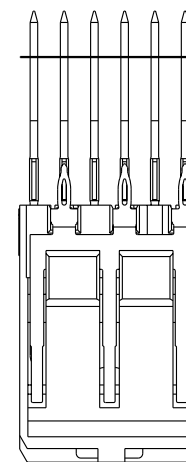


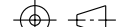



PRODUCT NUMBER	CONTACT PLATING PERFORMANCE LEVEL	PRESS-FIT TAIL PLATING
10043968-1YYY	TELCORDIA CO	STANDARD (SnPb)
10043968-1YYLFL	TELCORDIA CO	LEAD FREE (Sn)
10043968-5YYY	TELCORDIA UE	STANDARD (SnPb)
10043968-5YYLFL	TELCORDIA UE	LEAD FREE (Sn)



***ROW C INFORMATION**
ODD NUMBER COLUMNS WITHIN ROW C ARE COMMONED
TO GROUND INTERNALLY WITHIN THE HOUSING
WHEN A U-SHAPED STRIPLINE SHIELD IS PRESENT.



mat'l code SEE NOTE 5				tolerances unless otherwise specified			CUSTOMER		FCi www.fciconnect.com		
ltr	ecn no.	dr	date	linear	0. X ±0.3			COPY projection 	title VERTICAL SIGNAL HDR 5 ROW P.F. 30 POS. SELECT LOAD STD.		
A	V04-0815	TAB	2004-08-12		0. XX ±0.10						
B	V04-0879	TAB	2004-11-02		0. XXX ±.050						
C	V05-0535	DAI	2005-06-02	angles	0° ±2°			 MM scale 1:1	product family METRAL 1000/4000		code
D	V06-0573	DCH	2006-06-15	dr	T. BRUNGARD	2004-08-12	size		dwg no	213	
E	V06-0868	DCH	2006-08-29	engr	J. VOLSTORF	2004-08-12	10043968		sheet		
F	V07-0541	DCH	2007-08-14	chr	J. VOLSTORF	2004-08-12			1 of 7		
G	V08-0118	HTB	2008-03-10	appd	J. VOLSTORF	2004-08-12					
sheet index	revision sheet	G	G	G	G	G	G				
		1	2	3	4	5	6	7			

Pro/E

cage code 22526

PDM: Rev:G

STATUS: Released Printed: May 13, 2011

[illegible]

** THE GREATEST RANGE OCCURS WHEN THE
 B DIMENSION OF PIN 'GND' IS ONE
 SIZE SHORTER THAN THE OTHER PINS.

sheet	revision	
index	sheet	

4



PIN NO.	DIM A MATING LENGTH	DIM B TAIL LENGTH	PCB THICKNESS RANGE ACCOMMODATED BY PIN LENGTH				
			WHEN MATING TO A 73981 OR 84688 SERIES RECEPTACLE		WHEN MATING TO A 52057 SERIES METRAL 4000 RECEPTACLE		
			ROWS A,B,C,D,E	GROUND ROW	ROWS:A,B,D, E	ROW C	GROUND ROW
04*	7.25	4.30	1.60 MIN	1.60 MIN	1.60 MIN	1.60 MIN	1.60 MIN
57*		11.55	1.60 MIN	1.60 MIN	1.60 MIN	1.60 MIN	1.60 MIN
46		12.20	2.95 - 3.80	2.95 - 4.20	2.95 - 3.80	2.95 - 3.80	2.95 - 4.20
33		12.95	2.95 - 4.55	3.25 - 4.95	2.95 - 4.55	2.95 - 4.55	3.25 - 4.95
08		13.70	2.95 - 5.30	4.00 - 5.70	3.30 - 5.30	2.95 - 5.30	4.00 - 5.70
38		14.45	3.05 - 6.05	4.75 - 6.45	4.05 - 6.05	3.05 - 6.05	4.75 - 6.45
51		15.20	3.80 - 6.80	5.50 - 7.20	4.80 - 6.80	3.80 - 6.80	5.50 - 7.20
42		15.70	4.30 - 7.30	6.00 - 7.70	5.30 - 7.30	4.30 - 7.30	6.00 - 7.70
67		16.40	5.00 - 8.00	6.70 - 8.40	6.00 - 8.00	5.00 - 8.00	6.70 - 8.40
12		17.10	5.70 - 8.70	7.40 - 9.10	6.70 - 8.70	5.70 - 8.70	7.40 - 9.10
19*	8.00	4.30	1.60 MIN	1.60 MIN	1.60 MIN	1.60 MIN	1.60 MIN
58*		11.55	1.60 MIN	1.60 MIN	1.60 MIN	1.60 MIN	1.60 MIN
47		12.20	2.95 - 3.80	2.95 - 4.20	2.95 - 3.80	2.95 - 3.80	2.95 - 4.20
34		12.95	2.95 - 4.55	3.25 - 4.95	2.95 - 4.55	2.95 - 4.55	3.25 - 4.95
20		13.70	2.95 - 5.30	4.00 - 5.70	3.30 - 5.30	2.95 - 5.30	4.00 - 5.70
39		14.45	3.05 - 6.05	4.75 - 6.45	4.05 - 6.05	3.05 - 6.05	4.75 - 6.45
52		15.20	3.80 - 6.80	5.50 - 7.20	4.80 - 6.80	3.80 - 6.80	5.50 - 7.20
43		15.70	4.30 - 7.30	6.00 - 7.70	5.30 - 7.30	4.30 - 7.30	6.00 - 7.70
68		16.40	5.00 - 8.00	6.70 - 8.40	6.00 - 8.00	5.00 - 8.00	6.70 - 8.40
21		17.10	5.70 - 8.70	7.40 - 9.10	6.70 - 8.70	5.70 - 8.70	7.40 - 9.10

* STUB PINS - NO REAR PLUG-UP

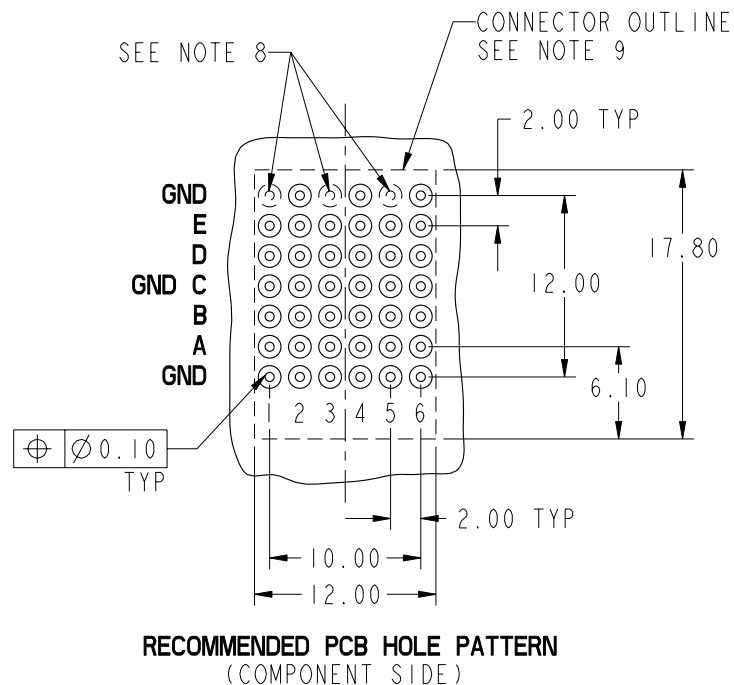
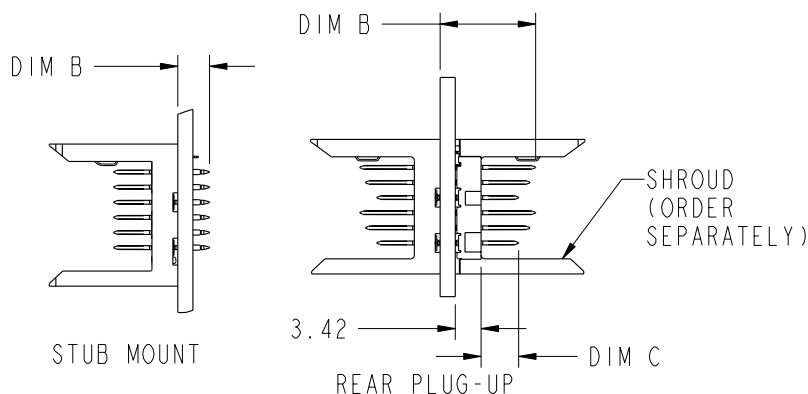
** THE GREATEST RANGE OCCURS WHEN THE
B DIMENSION OF PIN 'GND' IS ONE
SIZE SHORTER THAN THE OTHER PINS.

mat'l code SEE NOTE 5				tolerances unless otherwise specified		CUSTOMER		FCI www.fciconnect.com	
ltr	ecn no.	dr	date	linear	0.X ±0.3	projection	COPY	title	VERTICAL SIGNAL HDR 5 ROW P.F. 30 POS. SELECT LOAD STD.
G					0.XX ±0.10				
					0.XXX ±.050				
				angles	0° ±2°		MM	product family	METRAL 1000/4000
				dr	T. BRUNGARD 2004-08-12				
				enr	J. VOLSTORF 2004-08-12				
					chr	J. VOLSTORF 2004-08-12	scale	size	dwg no
					appd	J. VOLSTORF 2004-08-12			
sheet	revision								
index	sheet								



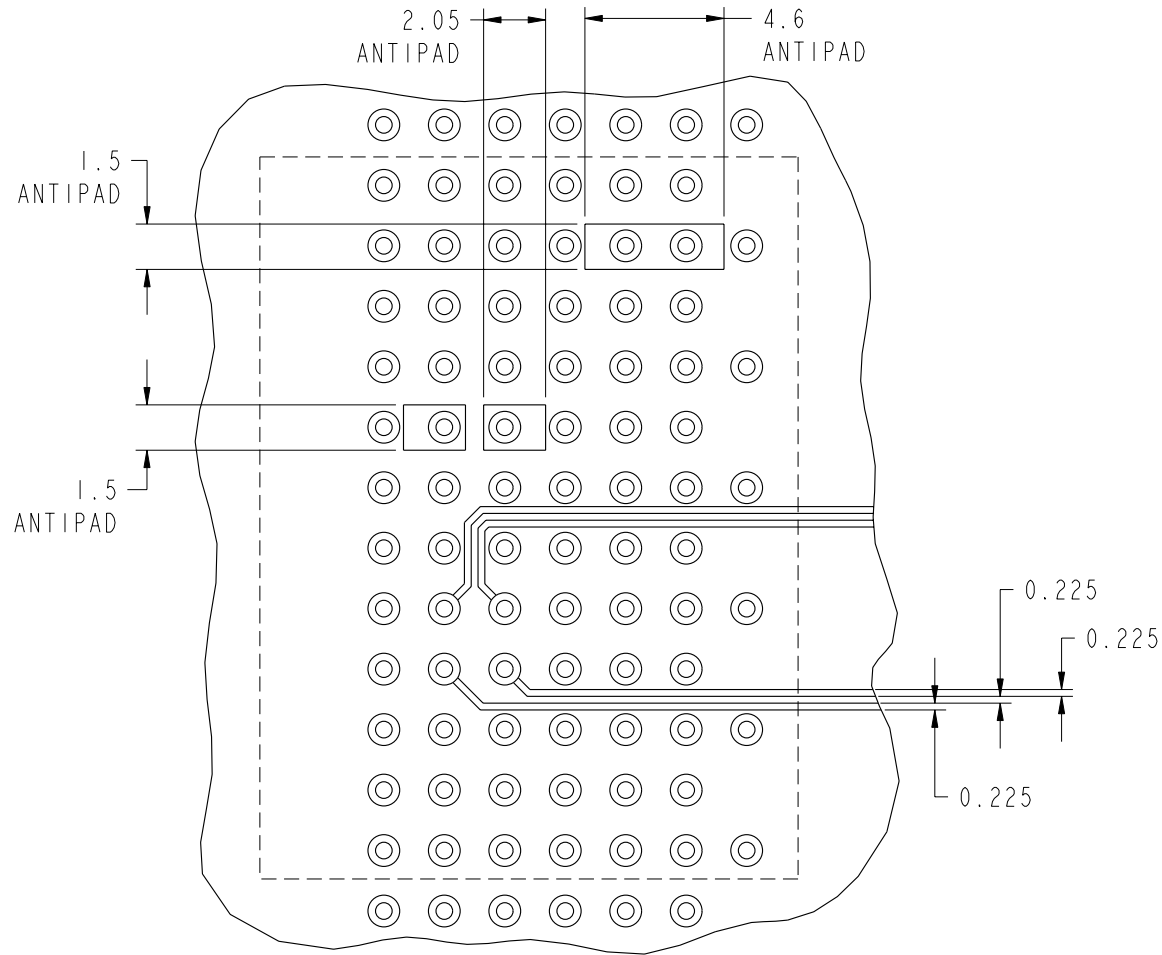
PRODUCT NUMBER
SEE SHEET 1

PRESS-FIT HOLES	TYPE 1	TYPE 2
HOLE DIAMETER AFTER PLATING	0.65-0.80	0.45-0.55
DRILLED HOLE	0.81-0.86 (0.85 DRILL)	0.58-0.62 (0.60 DRILL)
COPPER PLATING	0.025 MIN	0.025 MIN-0.050 MAX
SnPb PLATING	0.005-0.015	0.005-0.015



mat'l code SEE NOTE 5				tolerances unless otherwise specified		CUSTOMER		FCI www.fciconnect.com	
ltr	ecr no.	dr	date	linear	0.X ±0.3	projection	COPY	title VERTICAL SIGNAL HDR 5 ROW P.F. 30 POS. SELECT LOAD STD.	product family METRAL 1000/4000
G					0.XX ±0.10				
					0.XXX ±0.050				
				angles	0° ±2°	MM scale 1:1	A	size 10043968	code 213 sheet 4
				dr	T. BRUNGARD 2004-08-12				
				enr	J. VOLSTORF 2004-08-12				
				chr	J. VOLSTORF 2004-08-12	scale 1:1	A	size 10043968	code 213 sheet 4
				appd	J. VOLSTORF 2004-08-12				
sheet index	revision sheet								

PRODUCT NUMBER
SEE SHEET 1



RECOMMENDED TRACK AND ANTIPAD DIMENSIONS FOR 4000 PINS
SCALE 4:1

mat'l code SEE NOTE 5				tolerances unless otherwise specified		CUSTOMER		FCj www.fciconnect.com			
ltr	ecm no.	dr	date	linear	0.X ± 0.3	projection	COPY	title VERTICAL SIGNAL HDR 5 ROW P.F. 30 POS. SELECT LOAD STD.			
G					0.XX ± 0.10						
					0.XXX ± 0.050						
				angles	0° ± 2°	MM scale 1:1	A	product family METRAL 1000/4000			
				dr	T. BRUNGARD 2004-08-12			size		dwg no	code
				enr	J. VOLSTORF 2004-08-12			10043968		213	sheet
				chr	J. VOLSTORF 2004-08-12			5			
				appd	J. VOLSTORF 2004-08-12						
sheet index	revision sheet										

This document is the property of and embodies
CONFIDENTIAL and PROPRIETARY information of FCj.
No part of the information shown on this
document may be used in any way or disclosed
to others without the written consent of FCj.
Copyright FCj.



PRODUCT NUMBER	ROW	SELECT LOAD PATTERN					
		1	2	3	4	5	6
10043968-X001 *** SEE NOTE 16 LEAD FREE OPTION	GND	GND	GND	GND	GND	GND	GND
	E	02	02	02	02	55	55
	D	02	02	02	02	55	55
	C	02	02	02	02	55	55
	B	02	02	02	02	55	55
	A	02	02	02	02	55	55
	GND	02	02	02	02	55	55
	STRIPLINE SHIELD	YES	NO	YES	NO	NO	NO

PRODUCT NUMBER	ROW	SELECT LOAD PATTERN					
		1	2	3	4	5	6
10043968-X002 *** SEE NOTE 16 LEAD FREE OPTION	GND	GND	GND	GND	GND	GND	GND
	E	55	55	02	02	02	02
	D	55	55	02	02	02	02
	C	55	55	02	02	02	02
	B	55	55	02	02	02	02
	A	55	55	02	02	02	02
	GND	55	55	02	02	02	02
	STRIPLINE SHIELD	NO	NO	YES	NO	YES	NO

PRODUCT NUMBER	ROW	SELECT LOAD PATTERN					
		1	2	3	4	5	6
10043968-X003 *** SEE NOTE 16 LEAD FREE OPTION	GND	GND	GND	GND	GND	GND	GND
	E	55	02	02	02	02	55
	D	55	02	02	02	02	55
	C	55	02	02	02	02	55
	B	55	02	02	02	02	55
	A	55	02	02	02	02	55
	GND	55	02	02	02	02	55
	STRIPLINE SHIELD	YES	NO	YES	NO	YES	NO

*** REAR PLUG-UP PART NUMBERS
WITHOUT PIN ALIGNER.

mat'l code SEE NOTE 5				tolerances unless otherwise specified				CUSTOMER		<div>FCi</div> <div>www.fciconnect.com</div>					
ltr	ecn no.	dr	date	linear	0.X ±0.3				COPY		<div>title</div> VERTICAL SIGNAL HDR 5 ROW P.F. 30 POS. SELECT LOAD STD				
G					0.XX ±0.10				projection						
					0.XXX ±.050				<div></div>						
				angles	0° ±2°				<div></div> <div>scale 1:1</div>		product family METRAL 1000/4000				code
		dr	T. BRUNGARD	2004-08-12	enrg						J. VOLSTORF	2004-08-12	size	dwg no	213
		chr	J. VOLSTORF	2004-08-12	appd						J. VOLSTORF	2004-08-12	A	10043968	sheet 6
sheet index	revision sheet														

PIN CODE	PIN TYPE	VIA HOLE TYPE REQUIRED SEE SHEET 4
02	METRAL 4000	TYPE 2
55	METRAL 1000/2000	TYPE 1
GND	N/A	TYPE 2

PRODUCT NUMBER

SEE SHEET 1

NOTES:

1. SEE APPLICATION SPECIFICATIONS GS-20-010 AND GS-20-014 FOR INFORMATION ON AVAILABLE TOOLING, CIRCUIT BOARD DESIGN CONSIDERATIONS, REPAIR PROCEDURES AND PRODUCT OFFERINGS.
SEE PRODUCT SPECIFICATION: GS-12-110
GS-12-184
2. SEE FCI PUBLICATION 95011-028 FOR "ELECTRICAL PERFORMANCE DATA FOR DIFFERENTIAL APPLICATIONS."
3. SEE FCI PUBLICATION 95011-029 FOR "ELECTRICAL PERFORMANCE DATA FOR SINGLE-ENDED APPLICATION."
4. UNLESS OTHERWISE SPECIFIED, ALL DIMENSIONS AND TOLERANCES ARE IN ACCORDANCE WITH ASME Y14.5, 1994
5. HOUSING MATERIAL: LIQUID CRYSTAL POLYMER, 30% GLASS FILLED, FLAME RETARDANT PER UL 94-V0.
PIN MATERIAL: PHOSPHER BRONZE
GROUND SPRING MATERIAL: PHOSPHER BRONZE
6. DIMENSIONAL RESTRICTIONS OF PINS IN HEADERS.
FOR MATING WITH METRAL 1000 RECEPTACLES
DIM A : 5.00mm MIN, 8.00mm MAX FOR ROWS A-E
DIM A : 5.00mm MIN, 5.75mm MAX FOR ROW GND NEXT TO ROW A
DIM C : 5.00mm MIN, 8.00mm MAX FOR ROWS A-E
DIM C : 4.60mm MIN, 6.30mm MAX FOR ROW GND NEXT TO ROW A
FOR MATING WITH METRAL 4000 RECEPTACLES
DIM A : 5.00mm MIN, 6.50mm MAX FOR ROWS A, B, D & E
DIM A : 5.00mm MIN, 8.00mm MAX FOR ROW C
DIM A : 5.00mm MIN, 5.75mm MAX FOR ROW GND NEXT TO ROW A
DIM C : 5.00mm MIN, 7.00mm MAX FOR ROWS A, B, D & E
DIM C : 5.00mm MIN, 8.00mm MAX FOR ROW C
DIM C : 4.60mm MIN, 6.30mm MAX FOR ROW GND NEXT TO ROW A
7. THE MIN PCB THICKNESS FOR REAR PLUG-UP APPLICATIONS IS 2.9mm SINCE THE COMPLIANT SECTIONS OF THE GROUND SPRING OF THE HEADER DIRECTLY OPPOSE THE GROUND SPRING OF THE SHROUD. THE MIN PCB THICKNESS FOR FRONT PLUG-UP ONLY APPLICATIONS IS 1.6mm.

8. THESE HOLES ARE NEEDED FOR REAR PLUG-UP DESIGNS USING A SHROUD AND MAY BE OMITTED FOR FRONT PLUG-UP ONLY DESIGNS.
9. THE 'CONNECTOR OUTLINE' IS THE MIN OUTLINE REQUIRED. TO DETERMINE THE OUTLINE NECESSARY TO PERMIT THE VARIOUS TYPES OF REPAIR OPERATIONS, SEE APPLICATION SPECIFICATION GS-20-010.

10. CURRENT RATING: 1 AMP PER PIN

11. TEMPERATURE RANGE: -55°C TO +105°C

12. P/N 10043968-XXXXLF



13. WE CURRENTLY HAVE NO INSPECTION METHOD TO CHECK TP OF CONTACT PIN TIP ON BOTTOM SIDE OF HEADER.

14. AFTER INSERTION INTO CIRCUIT BOARD WITH QUALIFIED TOOL.

15. PRODUCTS WHERE THE PART NUMBER ENDS IN LF MEET EUROPEAN DIRECTIVES AND OTHER COUNTRY REGULATIONS AS DESCRIBED IN GS-22-008.

ALL PRODUCTS WILL WITHSTAND EXPOSURE TO 260°C FOR 60 SECONDS IN A CONVECTION, INFRA-RED OR VAPOR PHASE REFLOW OVEN.

16. FOR LEAD FREE PART NUMBERS, ADD AN "LF" SUFFIX.
EXAMPLE: 10043968-X001LF

17. EQUIVALENT PRECIOUS METAL PLATINGS MAY BE SUBSTITUTED.

mat'l code SEE NOTE 5				tolerances unless otherwise specified		CUSTOMER		FCI www.fciconnect.com			
ltr	ecr no.	dr	date	linear	0.X ± 0.3		projection	title VERTICAL SIGNAL HDR 5 ROW P.F. 30 POS. SELECT LOAD STD.			
G					0.XX ± 0.10						
					0.XXX ± 0.050						
				angles	0° ± 2°		 MM scale 1:1	product family METRAL 1000/4000		code	
				dr	T. BRUNGARD	2004-08-12		size	dwg no	213	
				enrg	J. VOLSTORF	2004-08-12					
				chr	J. VOLSTORF	2004-08-12					
				appd	J. VOLSTORF	2004-08-12					
sheet index		revision sheet									

Mouser Electronics

Authorized Distributor

Click to View Pricing, Inventory, Delivery & Lifecycle Information:

[FCI / Amphenol:](#)

[10043968-5001](#) [10043968-5002LF](#) [10043968-5001LF](#)