

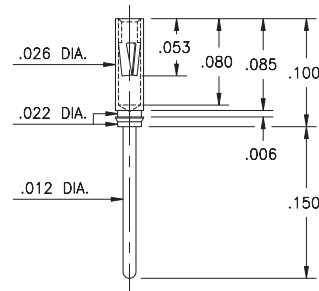
# PIN RECEPTACLES

**FOR .008" - .013" DIAMETER PINS (#04 CONTACT)  
AND .012" - .017" DIAMETER PINS (#10 CONTACT)  
(SEE SPECIFIC CONTACT RANGE ON PAGE 250)**

## 8210

8210-0-15-15-04-27-04-0

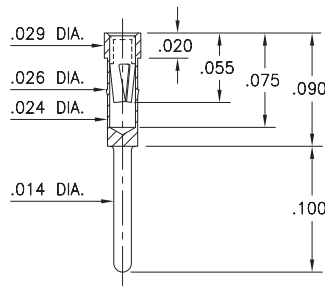
Press-fit in .024/.027 stepped hole



## 0439

0439-0-15-15-04-27-04-0

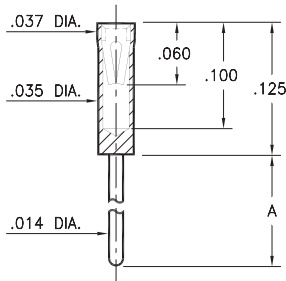
Press-fit in .025 mounting hole



## X464

X464-X-15-XX-10-XX-04-0

Solder mount in .016 min. mounting hole

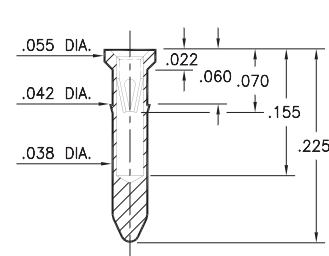


Basic Part Number	Length A
0464-0	.125
0464-1	.250
6464-0	.275

## 9225

9225-0-15-XX-10-XX-10-0

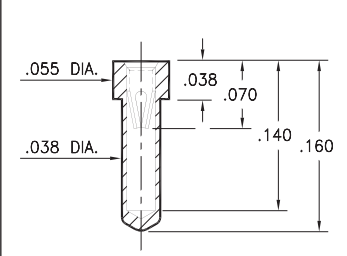
Press-fit in .039 mounting hole



## 0529

0529-0-15-XX-10-XX-10-0

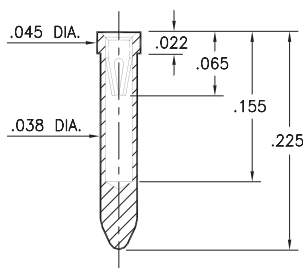
.040 min. mounting hole



## 8947

8947-0-15-XX-10-XX-10-0

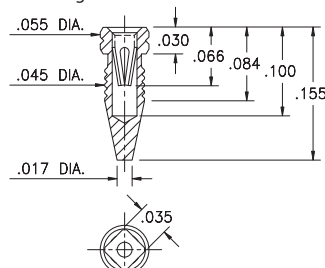
Solder mount in .040 min. mounting hole



## 4993

4993-0-15-15-10-27-10-0

Compliant press-fit in .041 - .043 Dia. mounting hole



### SPECIFICATIONS:

**Shell Material:** Brass Alloy 360, 1/2 Hard

**Contact Material:** Beryllium Copper Alloy 172, HT

**Dimensions:** Inches

**Tolerances On:** Lengths: ±.005

Diameters: ±.002

Angles: ±2°



**ORDER CODE: XXXX - X - XX - XX - XX - XX - XX - 0**

**BASIC PART #**

**SPECIFY SHELL FINISH:**

- 01 200 μ" TIN/LEAD OVER NICKEL
- ◆ 80 200 μ" TIN OVER NICKEL (RoHS)
- ◆ 15 10 μ" GOLD OVER NICKEL (RoHS)

**SPECIFY CONTACT FINISH:**

- 02 100 μ" TIN/LEAD OVER NICKEL
- ◆ 84 100 μ" TIN OVER NICKEL (RoHS)
- ◆ 27 30 μ" GOLD OVER NICKEL (RoHS)

**SELECT CONTACT:**

**#04 or #10 CONTACT (DATA ON PAGE 250)  
(CONTACTS #04 & #10 NOT INTERCHANGEABLE)**



# Mouser Electronics

Authorized Distributor

Click to View Pricing, Inventory, Delivery & Lifecycle Information:

## Mill-Max:

[4993-0-15-15-10-27-10-0](#) [0529-0-15-01-10-02-10-0](#) [0529-0-15-01-10-27-10-0](#) [0464-1-15-01-10-02-04-0](#) [0464-1-15-01-10-27-04-0](#) [0464-0-15-01-10-27-04-0](#) [0464-0-15-15-10-27-04-0](#) [8947-0-15-15-10-27-10-0](#) [9225-0-15-15-10-27-10-0](#) [8210-0-15-15-04-27-04-0](#) [0464-1-15-00-00-00-04-0](#) [4993-0-15-00-00-00-09-0](#) [8947-0-15-00-00-00-10-0](#) [9225-0-15-01-10-14-10-0](#) [0464-1-15-01-10-14-04-0](#) [0464-0-15-01-10-14-04-0](#) [0529-0-15-01-10-14-10-0](#) [0529-0-15-80-10-14-10-0](#) [0464-0-15-80-10-14-04-0](#) [0464-1-15-80-10-14-04-0](#) [9225-0-15-80-10-14-10-0](#) [8947-0-15-80-10-14-10-0](#)