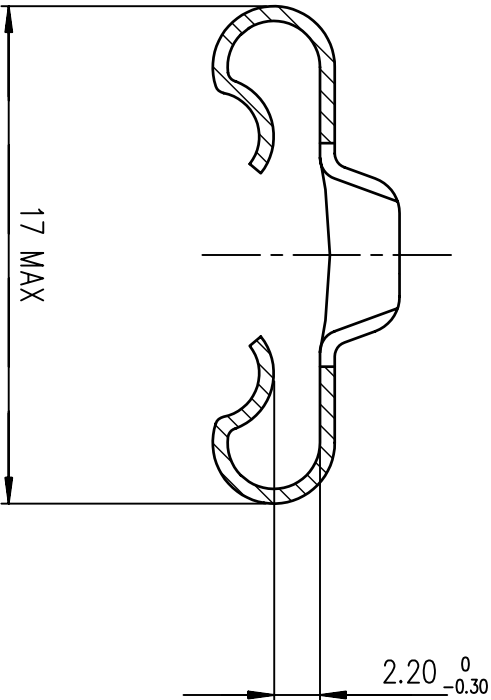


NOTES

Pieces assembly
Packaging : per 100 piece
Material : steel
Plating : tin plating
Thread : UNC 4.40

NOTE:RoHS INFORMATION

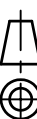
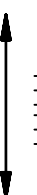
- The "LF" product meets European union Directives and other country regulations as described in GS-22-008.
- The product is not intended to be exposed to a manufacturing solder process.
- Plating: Sn pure bright over Copper.
- Packaging spec: see GS-14-920.




LEAD-FREE PART-NUMBER

Part number	863002ATLF
-------------	------------

European Views

www.fciconnect.com				surface ISO 1302		✓	tolerance std ISO 406 ISO 1101		projection 		mm 
				TOLERANCES UNLESS OTHERWISE SPECIFIED							
Dr	GOISNARD	2006/06/23	ANGULAR		LINEAR		0.X	±0.1	size	A3	Scale 5:1
Eng	PESSON	2006/06/23	0.xx'		±2°		0.xx	±0.1	ECN	ELX-H-011686	
Chr	ABHILASH	2011/01/25	0.0xx'		±2°		0.0xx	±0.1			
Appr	SUDHIR	2011/01/25	Product family				D-SUB		Spec ref	-	

		MALE SCREW LOCKS		C01-8655-1675	Rev. D
title		FOR CONNECTOR 50 PTS			
catalog no	-	dwg no		CUSTOMER	sheet 1 of 1



Copyright FCI.

Mouser Electronics

Authorized Distributor

Click to View Pricing, Inventory, Delivery & Lifecycle Information:

[FCI / Amphenol:](#)

[863002ATLF](#)