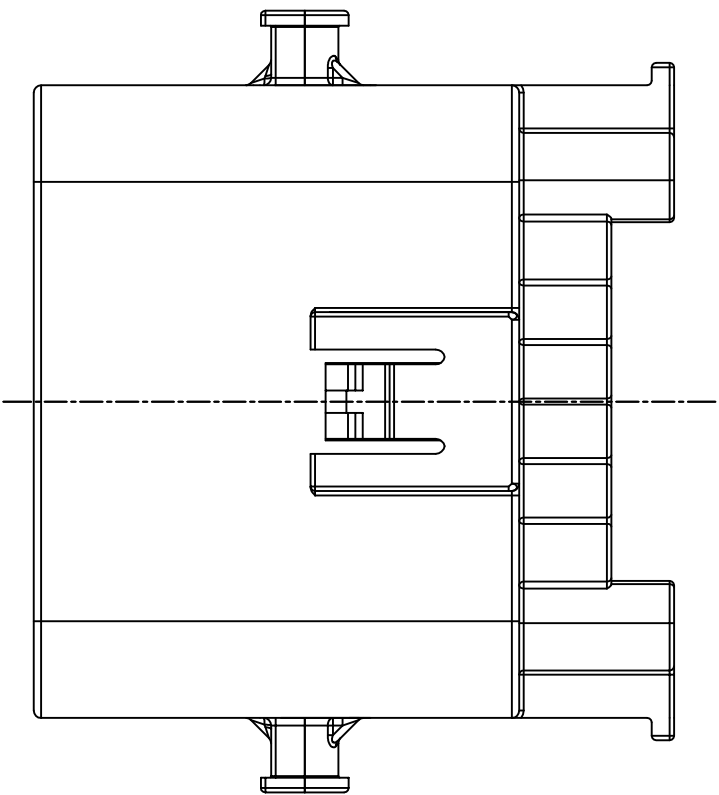
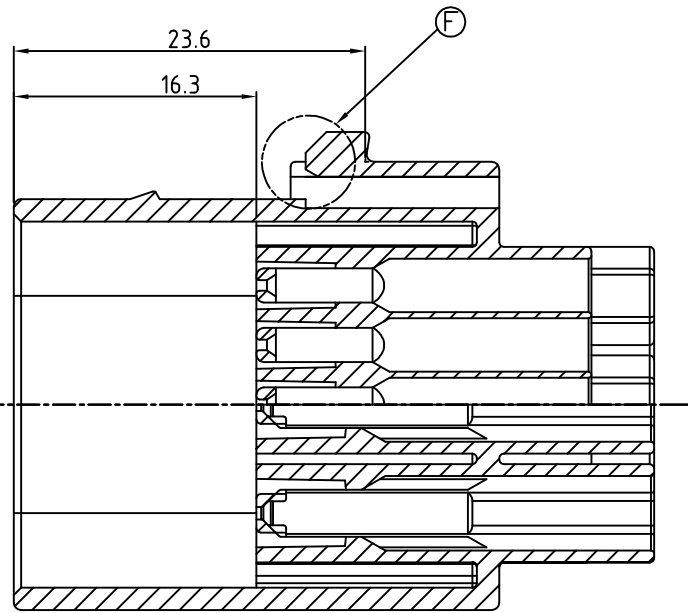
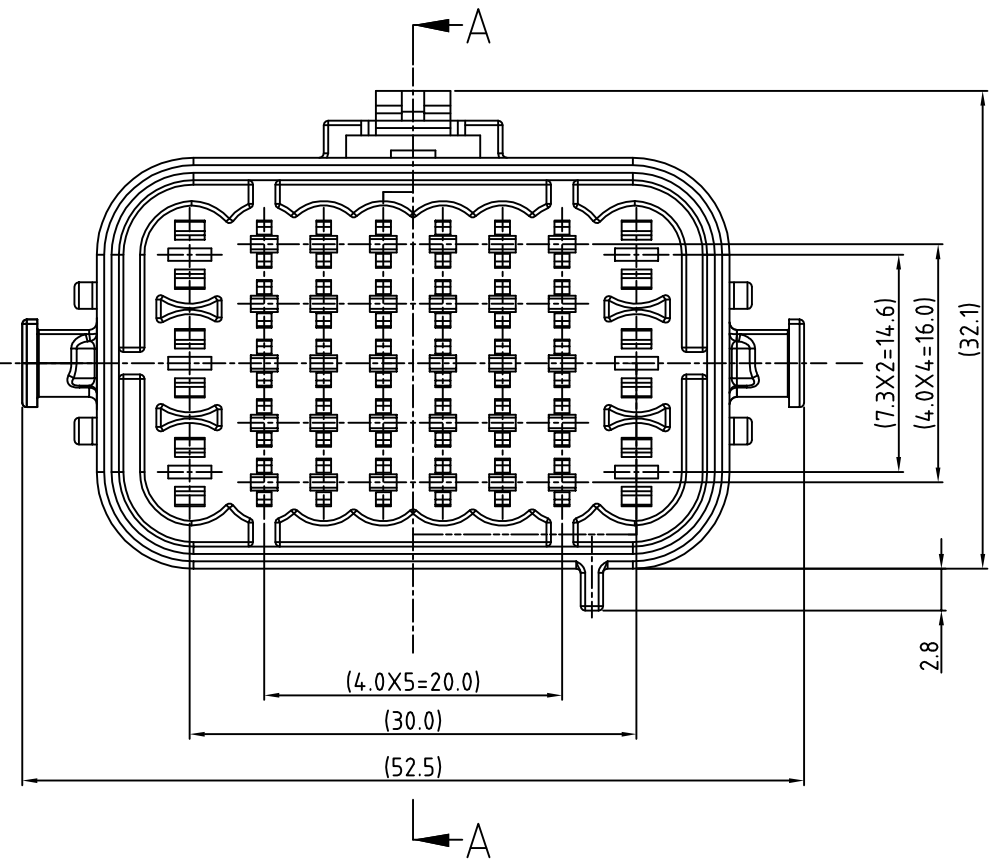


LOC	DIST	REVISIONS					
		P	LTR	DESCRIPTION	DATE	DWN	APVD
DS			F	REVISED (ECR-11-004732)	08/MAR/'11	SJ	HG
			G	REVISED (ECR-11-025917)	20/FEB/'12	SJ	HG
			G1	REVISED (ECR-15-009355)	24/AUG/'15	SJ	HG

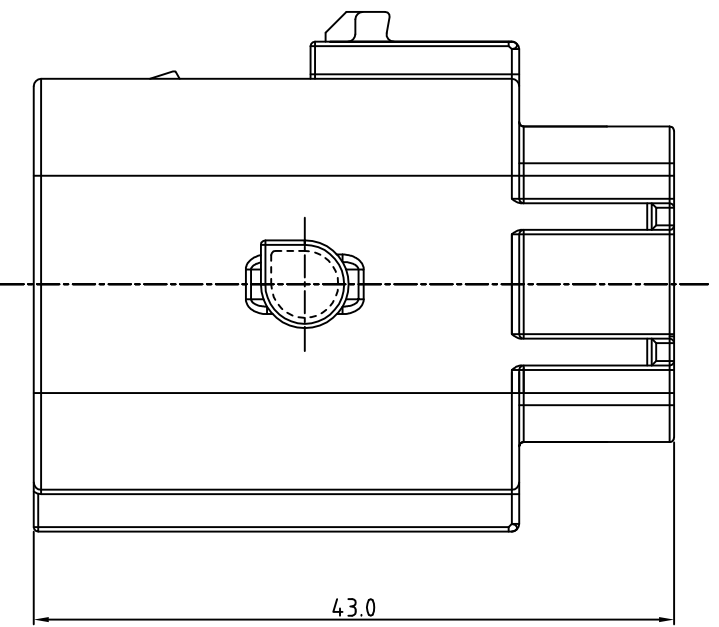
D



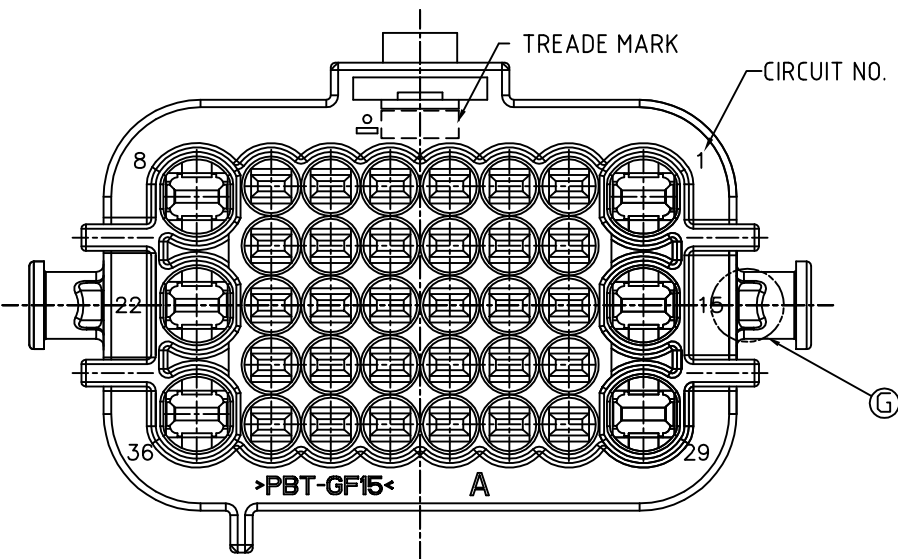
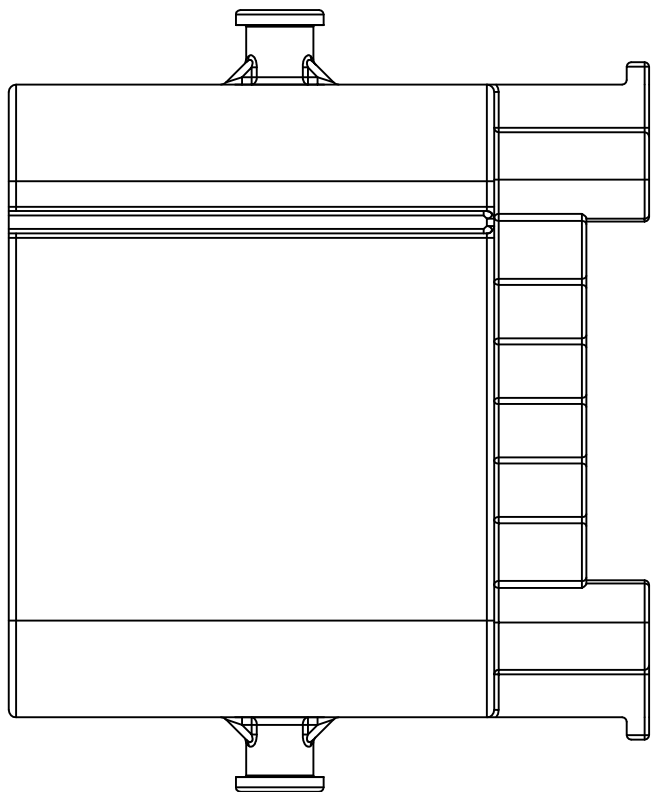
C



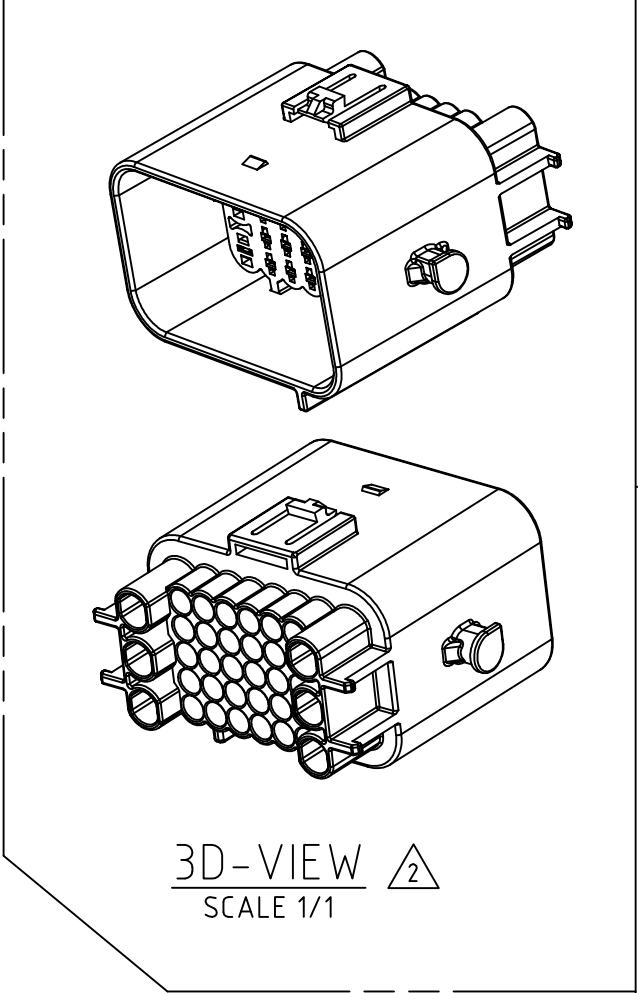
B



A



- NOTES;
1. GENERAL TOLERANCE IS ± 0.3
 2. CONDITION OF DELIVERY
 3. APPLIED PLUG ASS'Y P/N: X-1743059-X
APPLIED WIRE COVER P/N: X-1743065-X
 4. APPLIED RECEPTACLE CONTACT P/N : TABLE 1
 5. APPLIED WIRE SEAL P/N : TABLE 2



D

C

TABLE 2<			
TYPE	Part NO.	WIRE INSULATION DIAMETER(mm)	COLOR
MT II	964971-1	1.2 - 1.6	RED
	963530-1	1.7 - 1.9	GRAY
	963531-1	CAVITY PLUG	WHITE
JPT	828904-1	1.2 - 2.1	BLUE
	828905-1	2.2 - 3.0	WHITE
	①828922-1	CAVITY PLUG	NATURAL

TABLE 1<			
TYPE	Part NO.	WIRE SIZE(mm ²)	FINISH
MT II	0-963902-1	0.25-0.5	CuSn4
	0-963902-3		CuSn4(GOLD)
	0-963904-1	0.5-1.0	CuSn4
	0-963904-3		CuSn4(GOLD)
JPT	1-962915-1	0.5-0.85	CuSn4
	1-962915-3		CuSn4(GOLD)
	1-962916-1	1.25-2.0	CuSn4
	1-962916-3		CuSn4(GOLD)

①	BLACK	PBT-GF15	CAP HSG	9-1743062-2	CHINA ONLY
	GRAY	PBT-GF15	CAP HSG	0-1743062-3	
	BLACK	PBT-GF15	CAP HSG	0-1743062-2	
	NATURAL	PBT-GF15	CAP HSG	0-1743062-1	
COLOR/FINISH	MATERIAL	DESCRIPTION	P/N	REMARK	

control priority dimension;
☒ CRITICAL, ☒ MAJOR, ☐ MINOR

THIS DRAWING IS A CONTROLLED DOCUMENT FOR TYCO ELECTRONICS CORPORATION
IT IS SUBJECT TO CHANGE AND THE CONTROLLING ENGINEERING ORGANIZATION
SHOULD BE CONTACTED FOR THE LATEST REVISION.

DIMENSIONS:
MM

3rd ANGLE PROJECTION

TOLERANCES UNLESS OTHERWISE SPECIFIED:

DECIMALS :
ANGLES ± 3°

FINISH

SEE TABLE

TE

TE Connectivity

CAP HOUSING
FOR MTII/JPT HYBRID SEALED 36P CONN'R

SIZE

CAGE CODE

DRAWING NO

RESTRICTED TO

A200779

C-1743062

CUSTOMER DRAWING

SCALE 2/1

SHEET 1 OF 1

REV G1

A

Mouser Electronics

Authorized Distributor

Click to View Pricing, Inventory, Delivery & Lifecycle Information:

[TE Connectivity:](#)

[1743062-1](#)