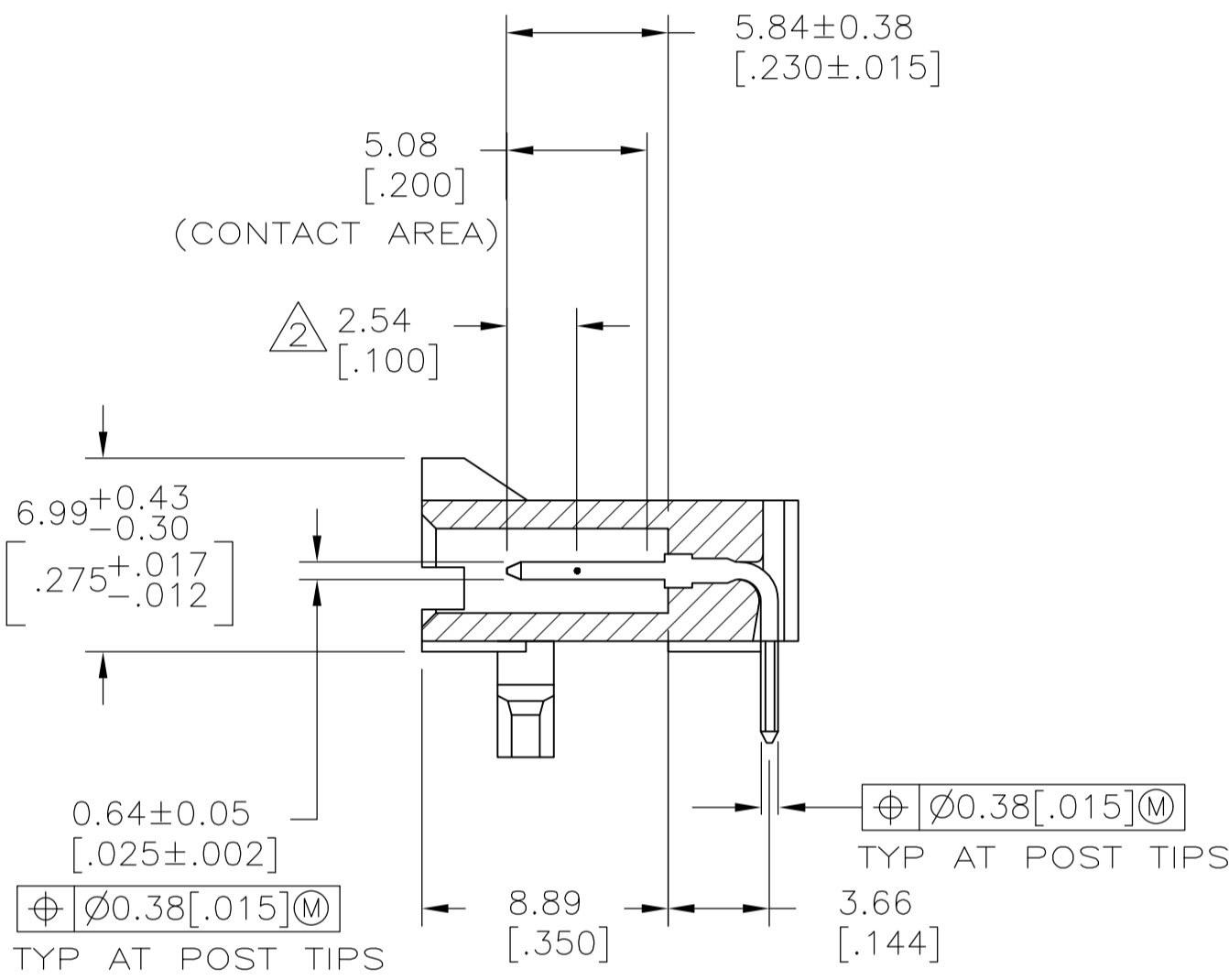
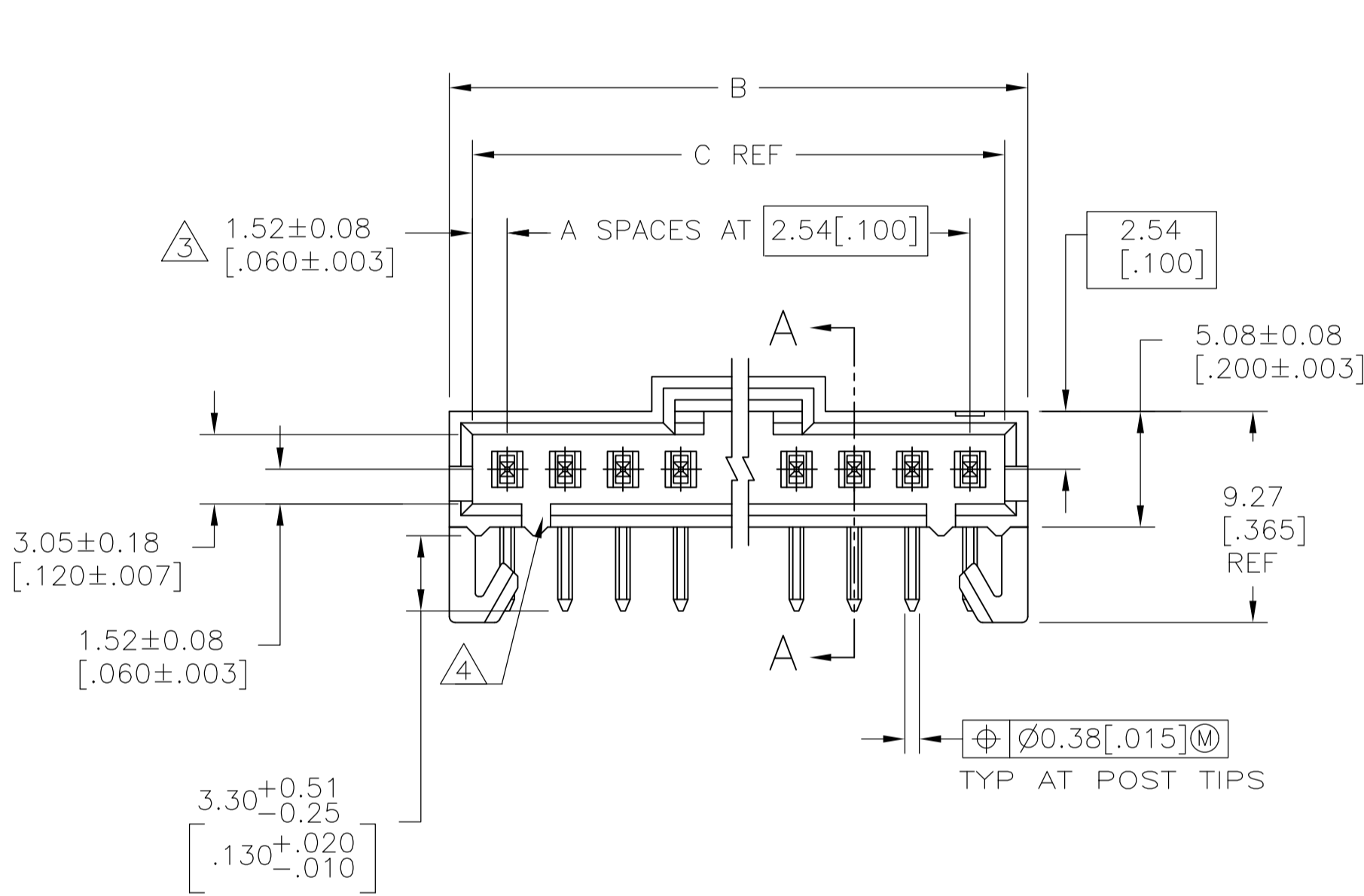
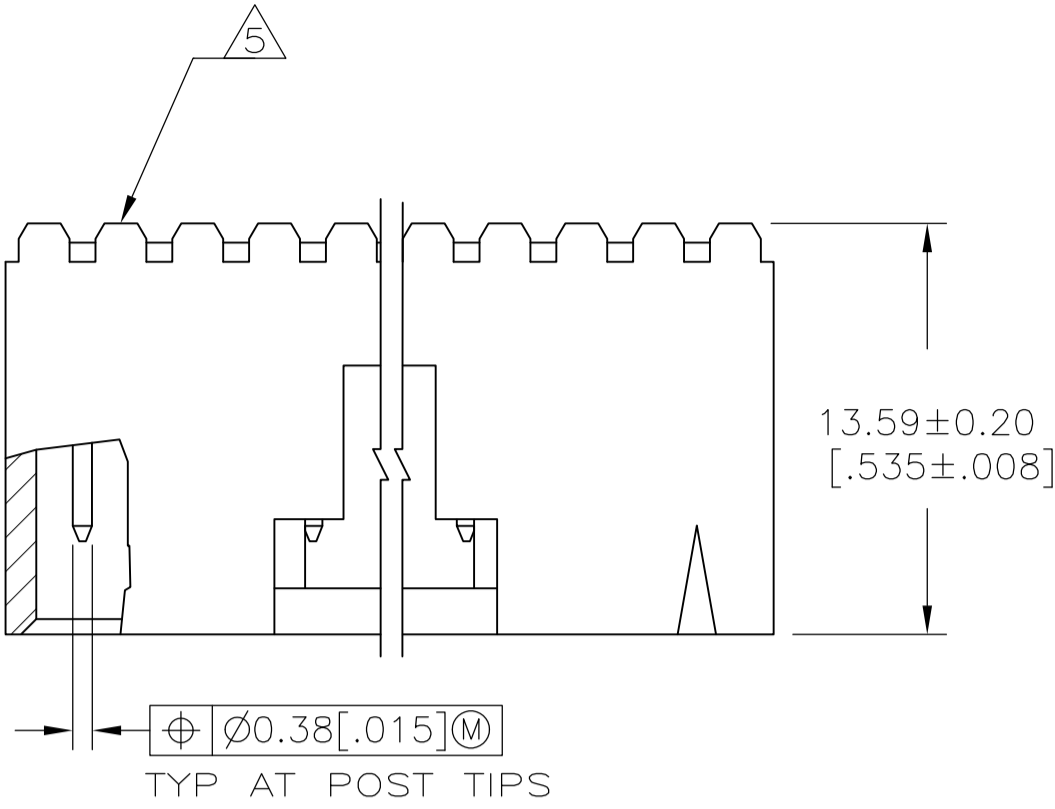
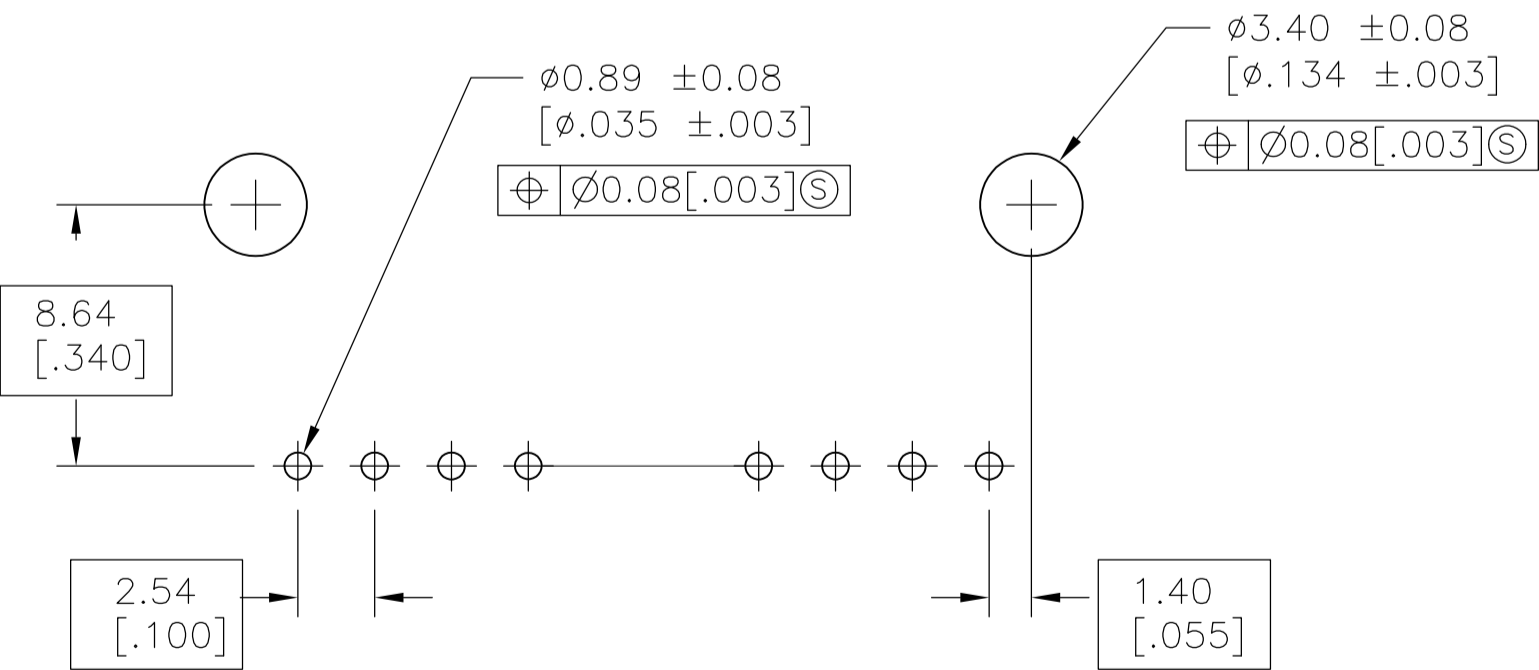




P	LTR	DESCRIPTION	DATE	DWN	APVD
AC3	REVISED	PER ECO-11-004587	11MAR11	RK	HMR
AD	REVISED	PER ECO-17-002583	08APR2017	RS	MM



SECTION A-A



RECOMMENDED HOLE LAYOUT

THIS DRAWING IS A CONTROLLED DOCUMENT.		DWN: R BROWN	09FEB01	 TE Connectivity			
DIMENSIONS: mm		CHK: K WRIGHT	09FEB01	NAME			
	TOLERANCES UNLESS OTHERWISE SPECIFIED:		APVD: K WRIGHT				
	0 P L C ± -		PRODUCT SPEC	HDR ASSY, RTANG, SINGLE ROW			
	1 P L C ± -		108-25034	2.54[.100] CL, 0.64[.025] SQ POST,			
	2 P L C ± 0.1%[.005]		APPLICATION SPEC	WITH PLZN & HOLD DOWNS, AMPMODU MTE			
	3 P L C ± -		114-25026	SIZE	CAGE CODE	DRAWING NO	RESTRICTED TO
4 P L C ± -				A1	00779	C103672	-
5 P L C ± -							
6 P L C ± -							
7 P L C ± -							
8 P L C ± -							
9 P L C ± -							
10 P L C ± -							
11 P L C ± -							
12 P L C ± -							
13 P L C ± -							
14 P L C ± -							
15 P L C ± -							
16 P L C ± -							
17 P L C ± -							
18 P L C ± -							
19 P L C ± -							
20 P L C ± -							
21 P L C ± -							
22 P L C ± -							
23 P L C ± -							
24 P L C ± -							
25 P L C ± -							
26 P L C ± -							
27 P L C ± -							
28 P L C ± -							
29 P L C ± -							
30 P L C ± -							
31 P L C ± -							
32 P L C ± -							
33 P L C ± -							
34 P L C ± -							
35 P L C ± -							
36 P L C ± -							
37 P L C ± -							
38 P L C ± -							
39 P L C ± -							
40 P L C ± -							
41 P L C ± -							
42 P L C ± -							
43 P L C ± -							
44 P L C ± -							
45 P L C ± -							
46 P L C ± -							
47 P L C ± -							
48 P L C ± -							
49 P L C ± -							
50 P L C ± -							
51 P L C ± -							
52 P L C ± -							
53 P L C ± -							
54 P L C ± -							
55 P L C ± -							
56 P L C ± -							
57 P L C ± -							
58 P L C ± -							
59 P L C ± -							
60 P L C ± -							
61 P L C ± -							
62 P L C ± -							
63 P L C ± -							
64 P L C ± -							
65 P L C ± -							
66 P L C ± -							
67 P L C ± -							
68 P L C ± -							
69 P L C ± -							
70 P L C ± -							
71 P L C ± -							
72 P L C ± -							
73 P L C ± -							
74 P L C ± -							
75 P L C ± -							
76 P L C ± -							
77 P L C ± -							
78 P L C ± -							
79 P L C ± -							
80 P L C ± -							
81 P L C ± -							
82 P L C ± -							
83 P L C ± -							
84 P L C ± -							
85 P L C ± -							
86 P L C ± -							
87 P L C ± -							
88 P L C ± -							
89 P L C ± -							
90 P L C ± -							
91 P L C ± -							
92 P L C ± -							
93 P L C ± -							
94 P L C ± -							
95 P L C ± -							
96 P L C ± -							
97 P L C ± -							
98 P L C ± -							
99 P L C ± -							
100 P L C ± -							
101 P L C ± -							
102 P L C ± -							
103 P L C ± -							
104 P L C ± -							
105 P L C ± -							
106 P L C ± -							
107 P L C ± -							
108 P L C ± -							
109 P L C ± -							
110 P L C ± -							
111 P L C ± -							
112 P L C ± -							
113 P L C ± -							
114 P L C ± -							
115 P L C ± -							
116 P L C ± -							
117 P L C ± -							
118 P L C ± -							
119 P L C ± -							
120 P L C ± -							
121 P L C ± -							
122 P L C ± -							
123 P L C ± -							
124 P L C ± -							
125 P L C ± -							
126 P L C ± -							
127 P L C ± -							
128 P L C ± -							
129 P L C ± -							
130 P L C ± -							
131 P L C ± -							
132 P L C ± -							
133 P L C ± -							
134 P L C ± -							
135 P L C ± -							
136 P L C ± -							
137 P L C ± -							
138 P L C ± -							
139 P L C ± -							
140 P L C ± -							
141 P L C ± -							
142 P L C ± -							
143 P L C ± -							
144 P L C ± -							
145 P L C ± -							
146 P L C ± -							
147 P L C ± -							
148 P L C ± -							
149 P L C ± -							
150 P L C ± -							
151 P L C ± -							
152 P L C ± -							
153 P L C ± -							
154 P L C ± -							
155 P L C ± -							
156 P L C ± -							
157 P L C ± -							
158 P L C ± -							
159 P L C ± -							
160 P L C ± -							
161 P L C ± -							
162 P L C ± -							
163 P L C ± -							
164 P L C ± -							
165 P L C ± -							
166 P L C ± -							
167 P L C ± -							
168 P L C ± -							
169 P L C ± -							
170 P L C ± -							
171 P L C ± -							
172 P L C ± -							
173 P L C ± -							
174 P L C ± -							
175 P L C ± -							
176 P L C ± -							
177 P L C ± -							
178 P L C ± -							
179 P L C ± -							
180 P L C ± -							
181 P L C ± -							
182 P L C ± -							
183 P L C ± -							
184 P L C ± -							
185 P L C ± -							
186 P L C ± -							
187 P L C ± -							
188 P L C ± -							
189 P L C ± -							
190 P L C ± -							
191 P L C ± -							
192 P L C ± -							
193 P L C ± -							
194 P L C ± -							
195 P L C ± -							
196 P L C ± -							
197 P L C ± -							
198 P L C ± -							
199 P L C ± -							
200 P L C ± -							
201 P L C ± -							
202 P L C ± -							
203 P L C ± -							
204 P L C ± -							
205 P L C ± -							
206 P L C ± -							
207 P L C ± -							
208 P L C ± -							
209 P L C ± -							
210 P L C ± -							
211 P L C ± -							
212 P L C ± -							
213 P L C ± -							
214 P L C ± -							
215 P L C ± -							
216 P L C ± -							
217 P L C ± -							
218 P L C ± -							
219 P L C ± -							
220 P L C ± -							
221 P L C ± -							
222 P L C ± -							
223 P L C ± -							
224 P L C ± -							
225 P L C ± -							
226 P L C ± -							
227 P L C ± -							
228 P L C ± -							
229 P L C ± -							
230 P L C ± -							
231 P L C ± -							
232 P L C ± -							
233 P L C ± -							
234 P L C ± -							
235 P L C ± -							
236 P L C ± -							
237 P L C ± -							
238 P L C ± -							
239 P L C ± -							
240 P L C ± -							
241 P L C ± -							
242 P L C ± -							
243 P L C ± -							
244 P L C ± -							
245 P L C ± -							
246 P L C ± -							
247 P L C ± -							
248 P L C ± -							
249 P L C ± -							
250 P L C ± -							
251 P L C ± -							
252 P L C ± -							
253 P L C ± -							
254 P L C ± -							
255 P L C ± -							
256 P L C ± -							
257 P L C ± -							
258 P L C ± -							
259 P L C ± -							
260 P L C ± -							
261 P L C ± -							
262 P L C ± -							
263 P L C ± -							
264 P L C ± -							
265 P L C ± -							
266 P L C ± -							
267 P L C ± -							
268 P L C ± -							
269 P L C ± -							
270 P L C ± -							
271 P L C ± -							
272 P L C ± -							
273 P L C ± -							
274 P L C ± -							
275 P L C ± -							
276 P L C ± -							
277 P L C ± -							

8

7

6

5

4

3

2

1

THIS DRAWING IS UNPUBLISHED.

RELEASED FOR PUBLICATION

ALL RIGHTS RESERVED.

REVISIONS

P	LTR	DESCRIPTION	DATE	DWN	APVD
		SEE SHEET 1	-	-	-

1

.000100 BRIGHT TIN-LEAD OVER .000050 NICKEL.

2

POINT OF MEASUREMENT FOR PLATING THICKNESS.

3

THE NOTED DIMENSIONS APPLY AT THE INTERSECTION OF THE POST AND THE HOUSING.

4

ON ASSEMBLIES WITH FOUR OR MORE POSITIONS, TWO POLARIZATION SLOTS.
ON ASSEMBLIES WITH TWO OR THREE POSITIONS, ONE POLARIZATION SLOT.

5

AMP TRADEMARK MOLDED ON THIS SURFACE.

6

FOR USE WITH 1.57±0.20[.062±.008] PRINTED CIRCUIT BOARD.

7

MATERIAL: HOUSING- FLAME RETARDANT LCP, COLOR-BLACK.
POSTS- BRASS.

8

.000100 BRIGHT TIN OVER .000050 NICKEL.

9

PRELIMINARY PART - NOT RELEASED FOR PRODUCTION.

10

.000100 MATTE TIN OVER .000050 NICKEL.

11

HIGH TEMPERATURE CONFIGURATION

12

OBSOLETE PARTS: OBSOLETE CIS STREAMLINING PER D.RENAUD/D.SINISI

11

10

REMARKS	PLATING	C	B	A	NO. OF POSN	PART NO.
		64.01 [2.520]	65.91 [2.595]	24	25	7-103672-4
		61.47 [2.420]	63.37 [2.495]	23	24	7-103672-3
		58.93 [2.320]	60.83 [2.395]	22	23	7-103672-2
		56.39 [2.220]	58.29 [2.295]	21	22	7-103672-1
		53.85 [2.120]	55.75 [2.195]	20	21	7-103672-0
		51.31 [2.020]	53.21 [2.095]	19	20	6-103672-9
		48.77 [1.920]	50.67 [1.995]	18	19	6-103672-8
		46.23 [1.820]	48.13 [1.895]	17	18	6-103672-7
		43.69 [1.720]	45.59 [1.795]	16	17	6-103672-6
		41.15 [1.620]	43.05 [1.695]	15	16	6-103672-5
		38.61 [1.520]	40.51 [1.595]	14	15	6-103672-4
		36.07 [1.420]	37.97 [1.495]	13	14	6-103672-3
		33.53 [1.320]	35.43 [1.395]	12	13	6-103672-2
		30.99 [1.220]	32.89 [1.295]	11	12	6-103672-1
		28.45 [1.120]	30.35 [1.195]	10	11	6-103672-0
		25.91 [1.020]	27.81 [1.095]	9	10	5-103672-9
		23.37 [.920]	25.27 [0.995]	8	9	5-103672-8
		20.83 [.820]	22.73 [.895]	7	8	5-103672-7
		18.29 [.720]	20.19 [.795]	6	7	5-103672-6
		15.75 [.620]	17.65 [.695]	5	6	5-103672-5
		13.21 [.520]	15.11 [.595]	4	5	5-103672-4
		10.67 [.420]	12.57 [.495]	3	4	5-103672-3
		8.13 [.320]	10.03 [.395]	2	3	5-103672-2
		5.59 [.220]	7.49 [.295]	1	2	5-103672-1

11

1

REMARKS	PLATING	C	B	A	NO. OF POSN	PART NO.
		25.91 [1.020]	27.81 [1.095]	9	10	3-103672-0
		15.75 [.620]	17.65 [.695]	5	6	2-103672-9
		5.59 [.220]	7.493 [.295]	1	2	2-103672-8
		13.21 [.520]	15.11 [.595]	4	5	2-103672-7
		10.67 [.420]	12.57 [.495]	3	4	2-103672-6
		8.13 [.320]	10.03 [.395]	2	3	2-103672-5
		64.01 [2.520]	65.91 [2.595]	24	25	2-103672-4
		61.47 [2.420]	63.37 [2.495]	23	24	2-103672-3
		58.93 [2.320]	60.83 [2.395]	22	23	2-103672-2
		56.39 [2.220]	58.29 [2.295]	21	22	2-103672-1
		53.85 [2.120]	55.75 [2.195]	20	21	2-103672-0
		51.31 [2.020]	53.21 [2.095]	19	20	1-103672-9
		48.77 [1.920]	50.67 [1.995]	18	19	1-103672-8
		46.23 [1.820]	48.13 [1.895]	17	18	1-103672-7
		43.69 [1.720]	45.59 [1.795]	16	17	1-103672-6
		41.15 [1.620]	43.05 [1.695]	15	16	1-103672-5
		38.61 [1.520]	40.51 [1.595]	14	15	1-103672-4
		36.07 [1.420]	37.97 [1.495]	13	14	1-103672-3
		33.53 [1.320]	35.43 [1.395]	12	13	1-103672-2
		30.99 [1.220]	32.89 [1.295]	11	12	1-103672-1
		28.45 [1.120]	30.35 [1.195]	10	11	1-103672-0
		25.91 [1.020]	27.81 [1.095]	9	10	103672-9
		23.37 [.920]	25.27 [0.995]	8	9	103672-8
		20.83 [.820]	22.73 [.895]	7	8	103672-7
		18.29 [.720]	20.19 [.795]	6	7	103672-6
		15.75 [.620]	17.65 [.695]	5	6	103672-5
		13.21 [.520]	15.11 [.595]	4	5	103672-4
		10.67 [.420]	12.57 [.495]	3	4	103672-3
		8.13 [.320]	10.03 [.395]	2	3	103672-2
		5.59 [.220]	7.49 [.295]	1	2	103672-1

THIS DRAWING IS A CONTROLLED DOCUMENT.

DIMENSIONS:

mm

0 PLC
1 PLC
2 PLC
3 PLC
4 PLC
ANGLES

± -
± -
± 0.13[.005]
± -
± -

MATERIAL

SEE TABLE

DWN
R BROWN
CHK
K WRIGHT
APVD
K WRIGHT

09FEB01
09FEB01
09FEB01
09FEB01

PRODUCT SPEC
108-25034
APPLICATION SPEC
114-25026

SIZE
A1

WEIGHT

CUSTOMER DRAWING

SCALE 4:1

SHEET 2 OF 2

REV AD

TE Connectivity

HDR ASSY, RTANG, SINGLE ROW
2.54[.100] CL, 0.64[.025] SQ POST,
WITH PLZN & HOLD DOWNS, AMPMODU MTE

SIZE CAGE CODE DRAWING NO
007791003672

RESTRICTED TO
-

4805 (1/15)

Mouser Electronics

Authorized Distributor

Click to View Pricing, Inventory, Delivery & Lifecycle Information:

[TE Connectivity:](#)

[1-103672-1](#)