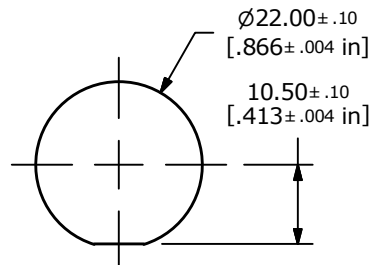
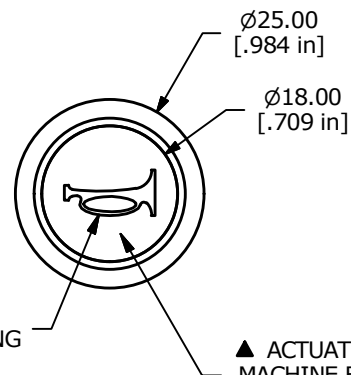


OPTIONAL PANEL CUTOUT  
MAX. PANEL THICKNESS 12mm



RECOMMENDED PANEL CUTOUT  
MAX. PANEL THICKNESS 12mm



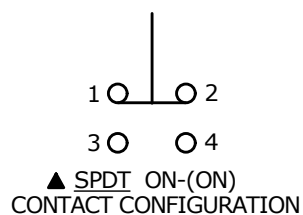
▲ LASER ENGRAVED  
M04 (HORN) MARKING

▲ ACTUATOR:  
MACHINE FINISH  
STAINLESS STEEL



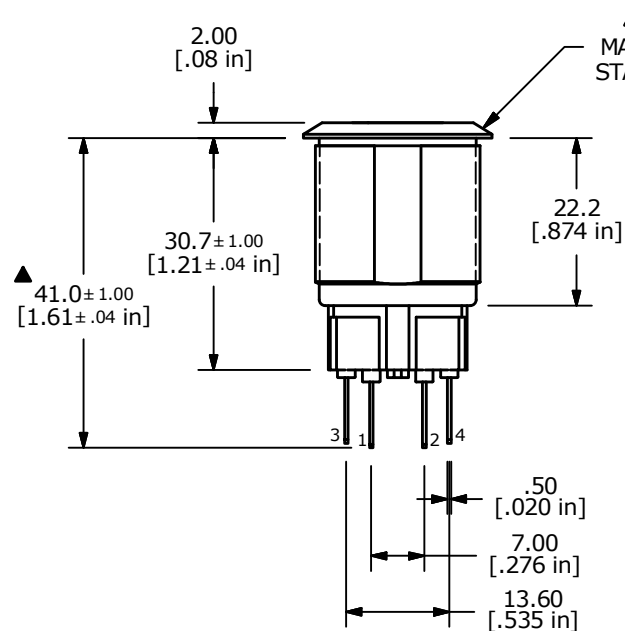
SWITCH FUNCTION	
POS. 1	POS. 2
ON	(ON)
1-2	(3-4)

(ON) = MOMENTARY

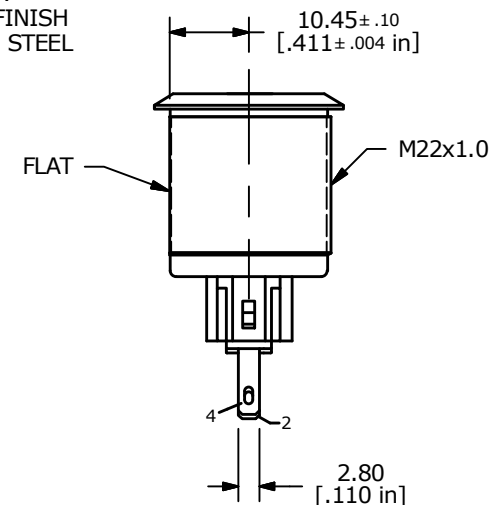


## NOTE:

1. ALL DIMENSIONS IN MM [INCH]
2. GENERAL TOLERANCE: X.X = ± 0.4  
X.XX = ± 0.25
3. TERMINAL NOS. FOR REF. ONLY
4. FUNCTION: SPDT
- ▲ 5. RATING: 2A @ 48VDC
6. CONTACT RESISTANCE: 50mΩ MAX. @ 1A 12VDC
7. INSULATION RESISTANCE: 1,000MΩ @ 500VDC
8. DIELECTRIC STRENGTH: 2,000VAC MIN. FOR 1 MINUTE
9. ELECTRICAL LIFE: 50,000 CYCLES
10. OPERATING TEMPERATURE: -20°C TO 55°C
11. INGRESS PROTECTION: IP65
12. ▲ DENOTES CRITICAL PARAMETER
13. 2002/95/EC (ROHS) COMPLIANT
- ▲ 14. HARDWARE INCLUDED: HEX NUT AND O-RING (NOT SHOWN)



▲ BODY:  
MACHINE FINISH  
STAINLESS STEEL



C	21957	DRAWING UPDATES	10/15/15	MW
B	21426	REDRAW, BODY WAS 5MM SHORTER	4/4/14	EBP
REV	PCR NO	DESCRIPTION	DATE	BY

THE INFORMATION CONTAINED IN THIS DOCUMENT IS PROPRIETARY  
TO E-SWITCH AND IS NOT TO BE COPIED OR TRANSFERRED

TITLE PV7F2Y0SS-M04

SCALE 1:1

DATE 4/4/2014

DR EBP

DWG 52-PV7F2Y0SSM04

REV C

# Mouser Electronics

Authorized Distributor

Click to View Pricing, Inventory, Delivery & Lifecycle Information:

[E-Switch:](#)

[PV7F2Y0SS-M04](#)