

“High Frequency Ceramic Solutions”

2.45 GHz Band Pass Filter

P/N 2450BP39C100B

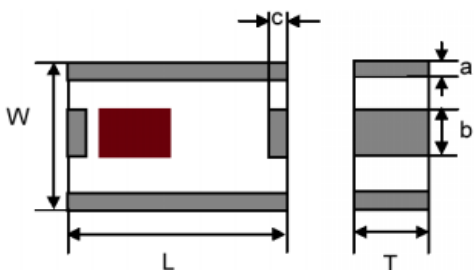
Detail Specification Page 1 of 2

Part Number	Frequency (MHz)	Insertion Loss	Attenuation (min.)	Return Loss	Ripple
2450BP39C100B_	2450 ± 50	1.8 dB max	30 dB @ 880 - 915 MHz 30 dB @ 1710 - 1785 MHz 25 dB @ 1850 - 1910 MHz 25 dB @ 4800 - 5000 MHz 20 dB @ 7200 - 7500 MHz	9.5 dB min.	0.7 dB min.

Input Power	Group Delay	Impedance	Operating Temperature Range
500 mWatt max	5 nsec max	50 Ω	-40 to +85°C

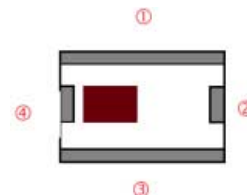
Mechanical Dimensions

	L	W	T	a	b	c
Inches	0.098 ± .008	0.079 ± .008	0.035 ± .004	0.012 ± .008	0.024 ± .008	0.012 ± .008
mm	2.5 ± 0.2	2.0 ± 0.2	0.9 ± 0.1	0.3 ± 0.2	0.6 ± 0.2	0.30 ± 0.2



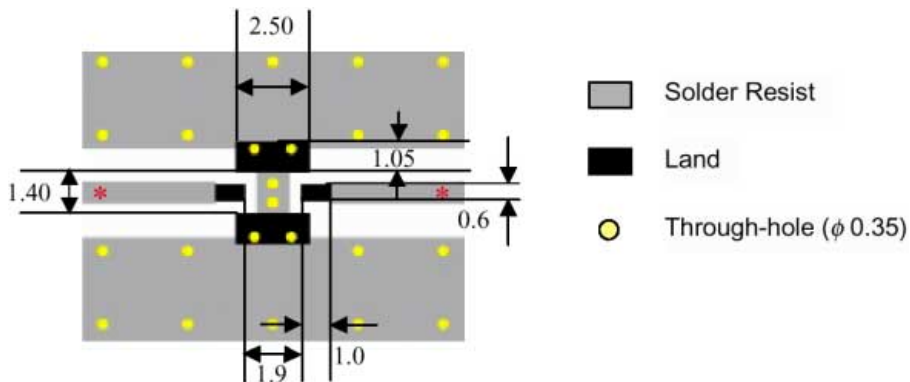
Terminal Configuration

No.	Function	No.	Function
1	GND	3	GND
2	OUT	4	IN



Mounting Considerations

Line width should be designed to provide 50Ω impedance matching characteristics.



Johanson Technology, Inc. reserves the right to make design changes without notice.
All sales are subject to Johanson Technology, Inc. terms and conditions.

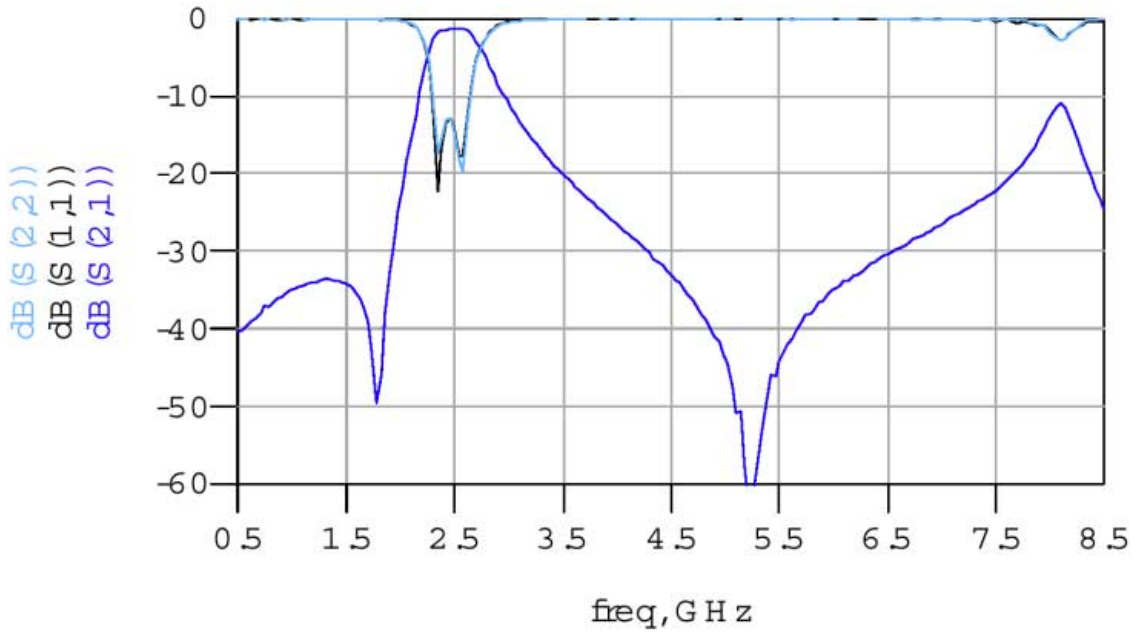
“High Frequency Ceramic Solutions”

2.45 GHz Band Pass Filter

P/N 2450BP39C100B

Detail Specification Page 1 of 2

Typical Transmission / Return Loss: P/N 2450BP39C100B



Mouser Electronics

Authorized Distributor

Click to View Pricing, Inventory, Delivery & Lifecycle Information:

[Johanson:](#)

[2450BP39C100BE](#)