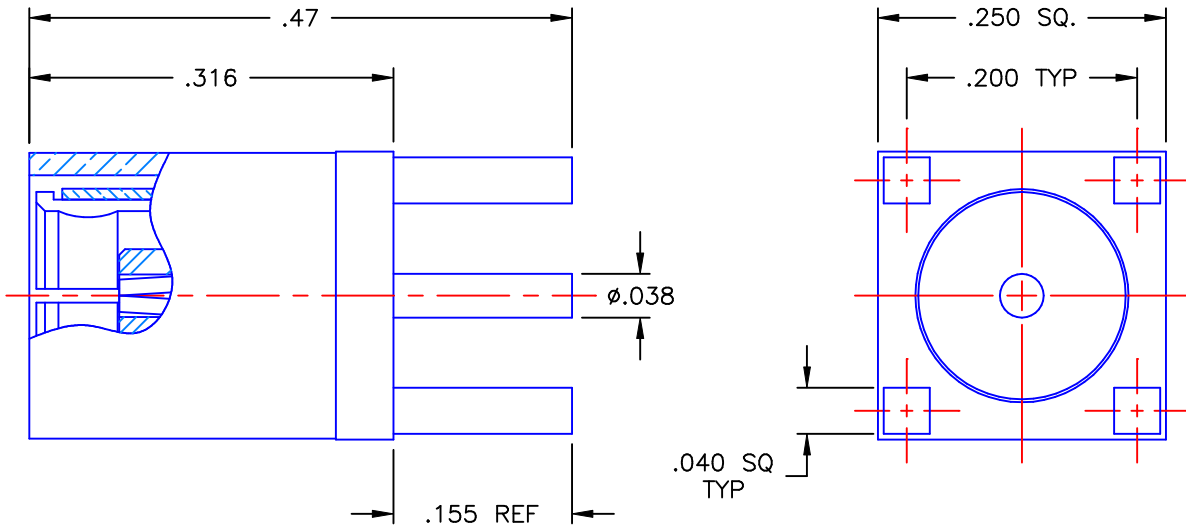


REVISIONS			
REV	DESCRIPTION	DATE	APPROVED
A	INITIAL RELEASE	07/31/07	D.N.



**PROPRIETARY INFORMATION**  
**NOT TO BE RELEASED**  
**WITHOUT WRITTEN PERMISSION**  
**FROM AN AUTHORIZED**  
**REPRESENTATIVE OF**  
**APPLIED ENGINEERING PRODUCTS**


NOTES:

MATERIALS:

1. BODY = BRASS PER ASTM B16, ALLOY C36000, TEMPER H02.
2. INSULATOR = VIRGIN WHITE TEFLON PER ASTM D1710, GRADE 1, TYPE I, CLASS "B".
3. CONTACT & SPRING = BERYLLIUM COPPER PER ASTM B196, ALLOY C17300, TEMPER TD04.
4. SLEEVE = BRASS PER ASTM B16, ALLOY C36000, TEMPER H02, BRASS TO BE SPEC'D. @ 75-82 ROCKWELL "B" TENSILE STRENGTH 55-65 KPSI.

FINISHES:

1. CONTACT = GOLD PLATE PER MIL-G-45204, TYPE II, CLASS 1, GRADE C, OVER .00010 TO .00020 STRESS FREE SULFAMATE NICKEL PER QQ-N-290.
2. SPRING = NICKEL PLATE PER QQ-N-290, CLASS 1, GRADE G, EXCEPT .0001 TO .0002 THICK OVER .00005 TO .0001 THICK COPPER PER MIL-C-14550.
3. BODY & SLEEVE = GOLD PLATE PER MIL-G-45204, TYPE II, CLASS 0, GRADE C, OVER .00010 TO .00020 COPPER STRIKE PER MIL-C-14550.

UNLESS OTHERWISE SPECIFIED DIMENSIONS ARE IN INCHES TOLERANCES ON	DWN: DATE D.N. 07/31/07	 <b>APPLIED ENGINEERING PRODUCTS</b> 104 John W. Murphy Dr. New Haven, CT 06513	<b>SMB STRAIGHT FEMALE PLUG          P.C.B. MOUNT          RECEPTACLE</b>	
	CHKD: DATE A.D.M. 07/31/07			
DECIMAL	ANGLE	APVD: DATE J.M. 07/31/07	SIZE A FSCM NO. 19505 DWG. NO. 2025-1511-000 REV A	
REFERENCE:	MATERIALS & FINISHES: SEE NOTES	SCALE 6:1		

2025-1511-000

# Mouser Electronics

Authorized Distributor

Click to View Pricing, Inventory, Delivery & Lifecycle Information:

Radial:

[2025-1511-000](#)