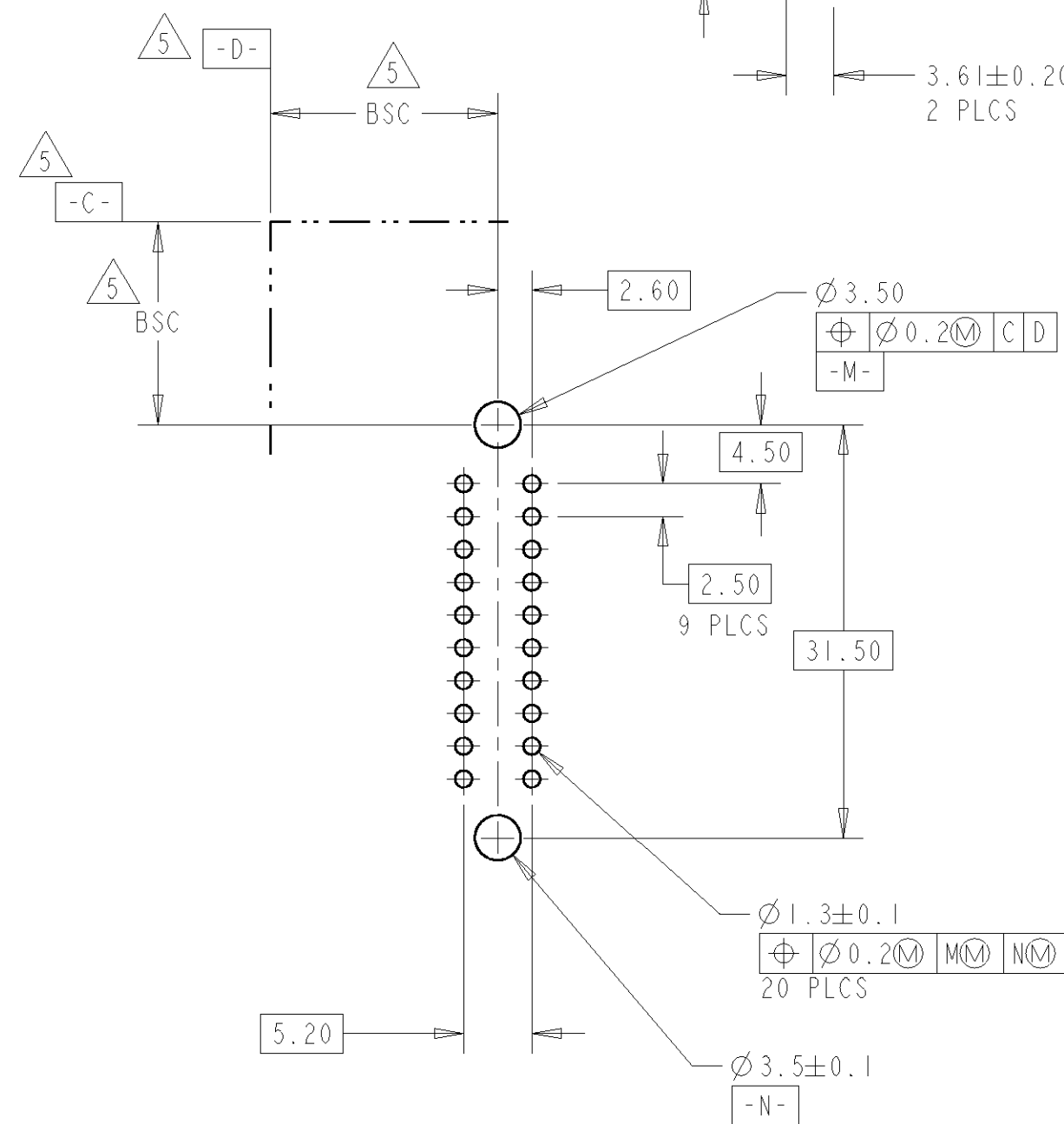
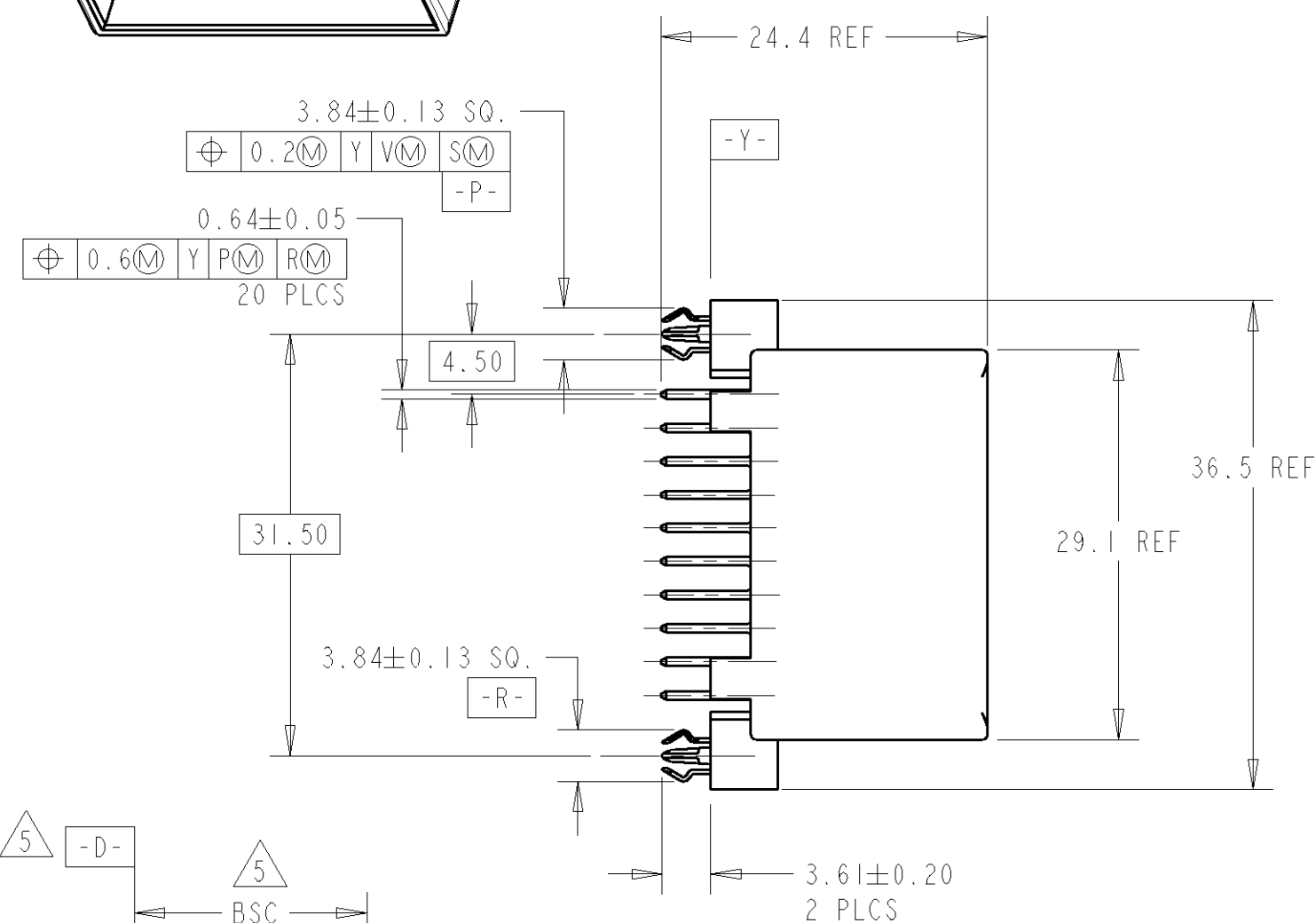
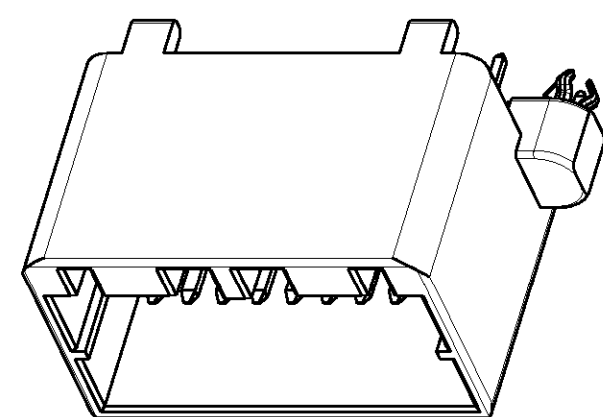
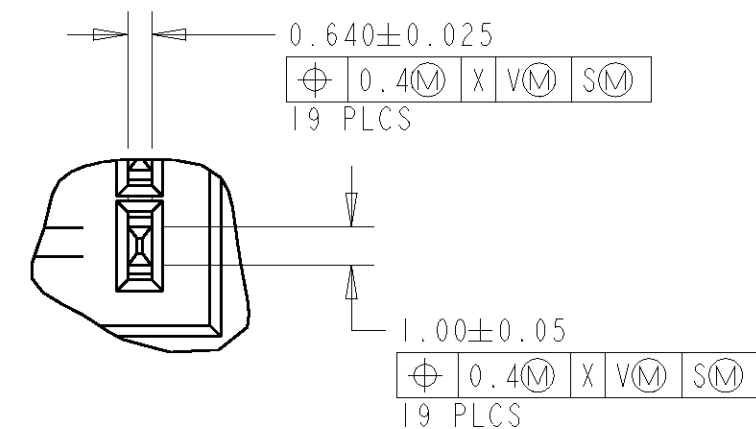
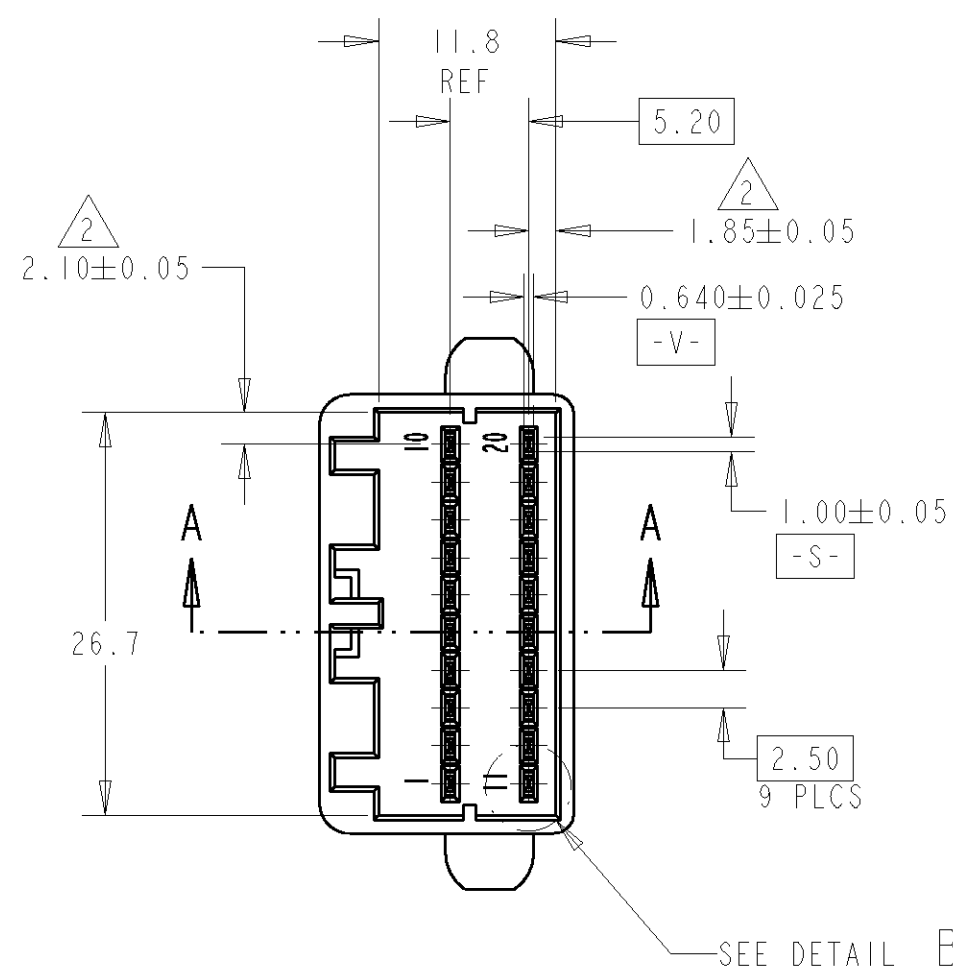
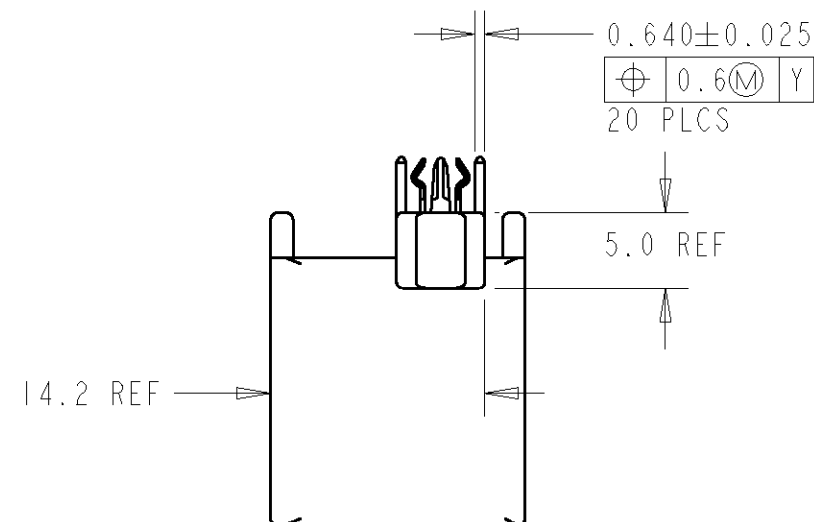


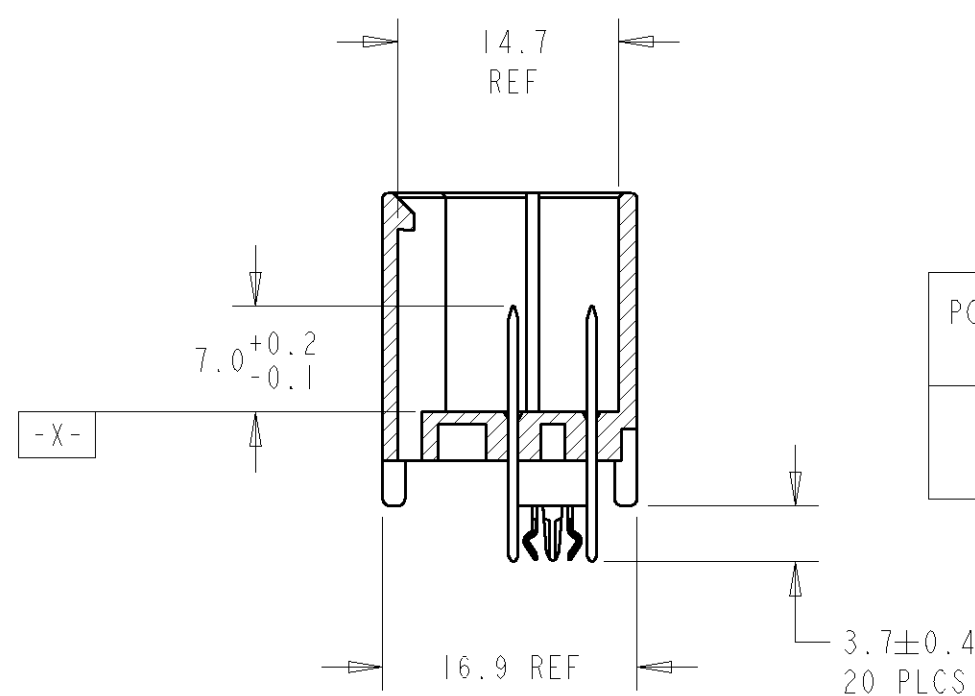
LOC	DIST	REVISIONS					
FX	00	P	LTR	DESCRIPTION	DATE	DWN	APVD
			O	REL PER NPR 99047	14SEP99	JRB	MAM
			A	REV PER EC 0K80-0166-99	08DEC99	JRB	GEM
			AI	REV PER EC 0K80-0139-03	19MAY03	DJA	SSA
			-	-	-	-	-



P.C. BOARD LAYOUT




DETAIL B
SCALE 5:1



SECTION A-A

POST-TIN OVER COPPER	POST-TIN OVER COPPER	BRASS	BLACK	HTN	9-638197-2
BOARDLOCK FINISH	CONTACT FINISH	CONTACT MATERIAL	COLOR	HOUSING MATERIAL	PART NUMBER

THIS DRAWING IS A CONTROLLED DOCUMENT FOR AMP INCORPORATED. IT IS SUBJECT TO CHANGE AND THE CONTROLLING ENGINEERING ORGANIZATION SHOULD BE CONTACTED FOR THE LATEST REVISION.		DWN Y. PETERSON 01SEP98 CHK M MENDYK 19JUL99 APVD M MENDYK 19JUL99		AMP AMP Incorporated Harrisburg, PA 17105-3608	
DIMENSIONS: mm 		TOLERANCES UNLESS OTHERWISE SPECIFIED: 0 PLC ±.003 1 PLC ±0.3 2 PLC ±0.15 3 PLC ±.015 4 PLC ±.01 ANGLES ±1		NAME ASSY, CAP III, .040 20P VERT. MOUNT -	
MATERIAL - -		FINISH - -		SIZE A2 CAGE CODE 00779 DRAWING NO C-638197 RESTRICTED TO -	
CUSTOMER DRAWING		WEIGHT -		SCALE 2/1 SHEET 1 OF 1 REV A1	

Mouser Electronics

Authorized Distributor

Click to View Pricing, Inventory, Delivery & Lifecycle Information:

[TE Connectivity:](#)

[9-638197-2](#)