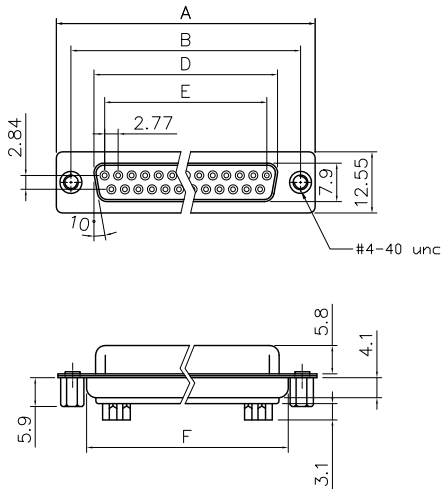
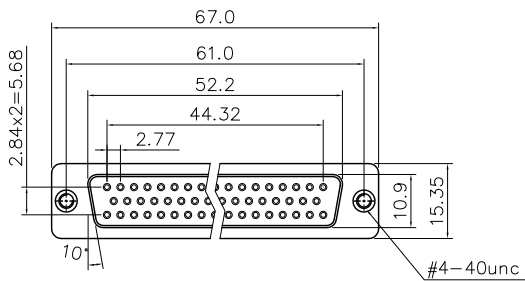


Customer drawing



Dimensions

Positions	A	B	D	E	F
9	30.81	24.99	16.33	11.08	19.20
15	39.20	33.30	24.70	19.39	27.70
25	53.05	47.04	38.40	33.24	41.10
37	69.40	63.50	54.80	49.86	57.30



50 Positions

REVISIONS				
SYM	ECN	DESCRIPTION	DATE	APPROVED
1	HK--	First Release Drawing	01/09/13	IP
2	HK--	Update the Drawing	04/29/14	IP

D-SUB TECHNICAL DATA

SHELL : Steel, 100u" Tin over 50u" nickel over 50u" min Copper
BODY : Glass-Filled Thermoplastic PBT, UL94V-0
CONTACTS : Copper Alloy
Gold flash over 50u" nickel on mating area
100u" tin over 50u" nickel on solder area
REAR NUT: Brass, Nickel Plated
ELECTRICAL : Voltage rating 250 VAC/RMS 60HZ
Current Rating 3 AMP
Withstanding Voltage 1000 VAC/RMS 60HZ for 1 minute
Insulation resistance >1000 M Ohms
Contact resistance 20 mOhms
MARKING : Amphenol...(Series No.)
Commercial reference
Manufacturing date

PRODUCT CODE

L 77 SD X H XX S

L:RoHS Compliant

77: tinned shell for receptable

SD: Standard density

Shell Size :E,A,B,C,D

Contact type:
S: Socket

Configuration:
09,15,25,37,50

Mounting type:
H=Rear insert 4-40

UNLESS OTHERWISE SPECIFIED		APPROVAL		DATE
TOLERANCES		DRAWN	Felix Liu	04/29/14
X	+/-	CHECKED	Tony Tang	04/29/14
.X	+/-	CHECKED		
.XX	+/-			
FRACTIONS	+/-			
ANGLES	X° +/-			
	X° +/-			
FOR MATERIALS AND FINISHES		DRAWING FILE :		
SEE NOTES		ANGLE OF PROJECTION		
REMOVE SHARP EDGES		ANGLE OF PROJECTION		
DIMENSIONS		ANGLE OF PROJECTION		
U.S.	INCHES	ANGLE OF PROJECTION		
METRIC	MM	ANGLE OF PROJECTION		

Amphenol

Amphenol East Asia Limited

TITLE
Stamped and formed contact,SD series

SIZE	DRAWING NO.	REV.
A4	L77SDXHXXS	2
SCALE	NONE	SHEET 1 OF 1

Mouser Electronics

Authorized Distributor

Click to View Pricing, Inventory, Delivery & Lifecycle Information:

[Amphenol:](#)

[L77SDBH25S](#) [L77SDAH15S](#) [L77SDDH50S](#) [L77SDCH37S](#)