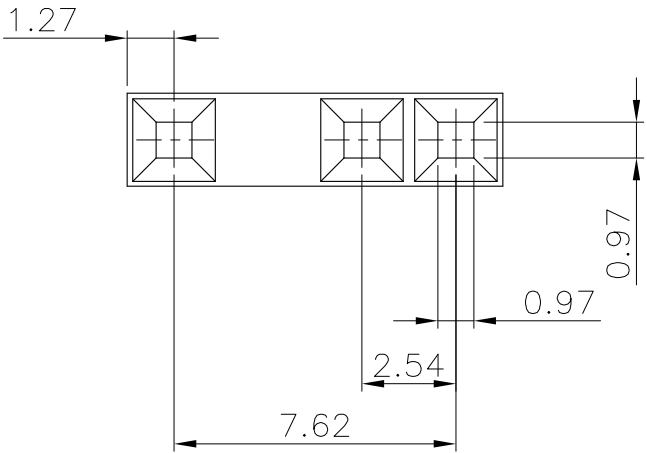
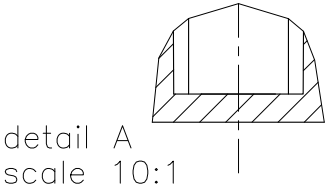
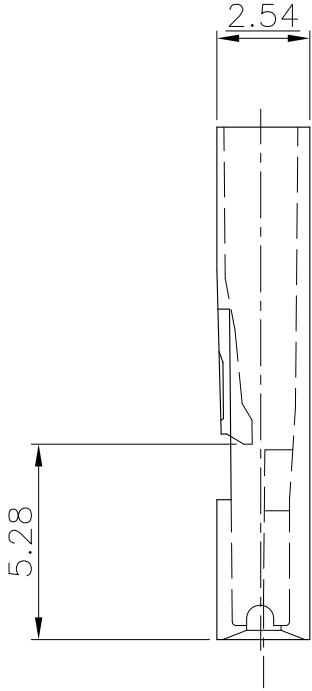
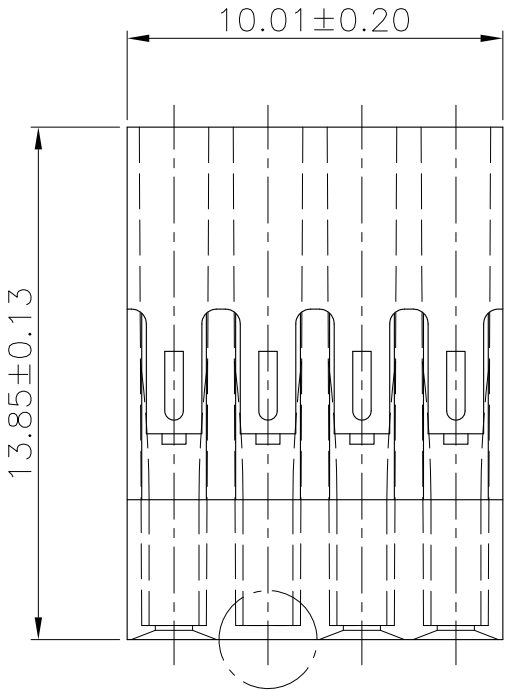


PRODUCT NUMBER


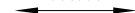

71627-001LF

"LF" INDICATES THE PRODUCT IS RoHS COMPLIANT, SEE NOTE 5.



NOTES:

1. MATERIAL: POLYPHENYLENE OXYDE (NORYL) COLOR BLACK UL 94V-1
 2. LATCH TERMINAL MUST WITHSTAND A MIN PULL-OUT FORCE OF 2.9 Kg
 3. TERMINALS MUST BE CRIMPED PROPERLY FOR SATISFACTORY LATCHING SEE TA-295 FOR CRIMPING INSTRUCTIONS.
 4. THIS HOUSING IS INTENDED FOR USE WITH MINI PV TERMINAL WITH 22-36 GAUGE WIRE.
 5. - RoHS COMPATIBLE PRODUCT SPECIFICATIONS
 - a - LABELING:
 - MEETS PACKAGING SPECS AS PER GS-14-920
 - b - LEGAL STATEMENT: SEE GS-22-008
- THE PRODUCT IS NOT INTENDED TO BE EXPOSED TO A MANUFACTURING SOLDER PROCESS.

mat'l. code 16-502-001				surface ISO 1302 ✓				tolerance ISO 406 ISO 1101				projection 				product family BERGCON																											
ltr				ecn no				dr				date				tolerances unless otherwise specified								title MINI-LATCH POLARIZED S.R.HOUSING																			
A				H88078				CVE				89.01.12				angles linear				.X ±0.3																							
B				F00405				VIB				00.05.16								.XX ±0.15																							
C				F05-0235				DLE				05.08.25								±2'																				.XXX ±0.05			
D				F05-0286				DLE				05.11.07				dr		D LEGRAND				05.08.18								dwg no				sheet 1 of 1				size					
E				F06-0218				DLE				06.07.11				engr		P NIZZI				05.08.18								71627				A3									
F				F07-0226				LMU				07.06.26				chr		P NIZZI				05.08.18								type				CUSTOMER Drawing									
G				B-14321				LMU				13.03.21				appd		P NZ				05.08.18																					
sheet index				revision sheet																																							

Mouser Electronics

Authorized Distributor

Click to View Pricing, Inventory, Delivery & Lifecycle Information:

[FCI / Amphenol:](#)

[71627-001LF](#)