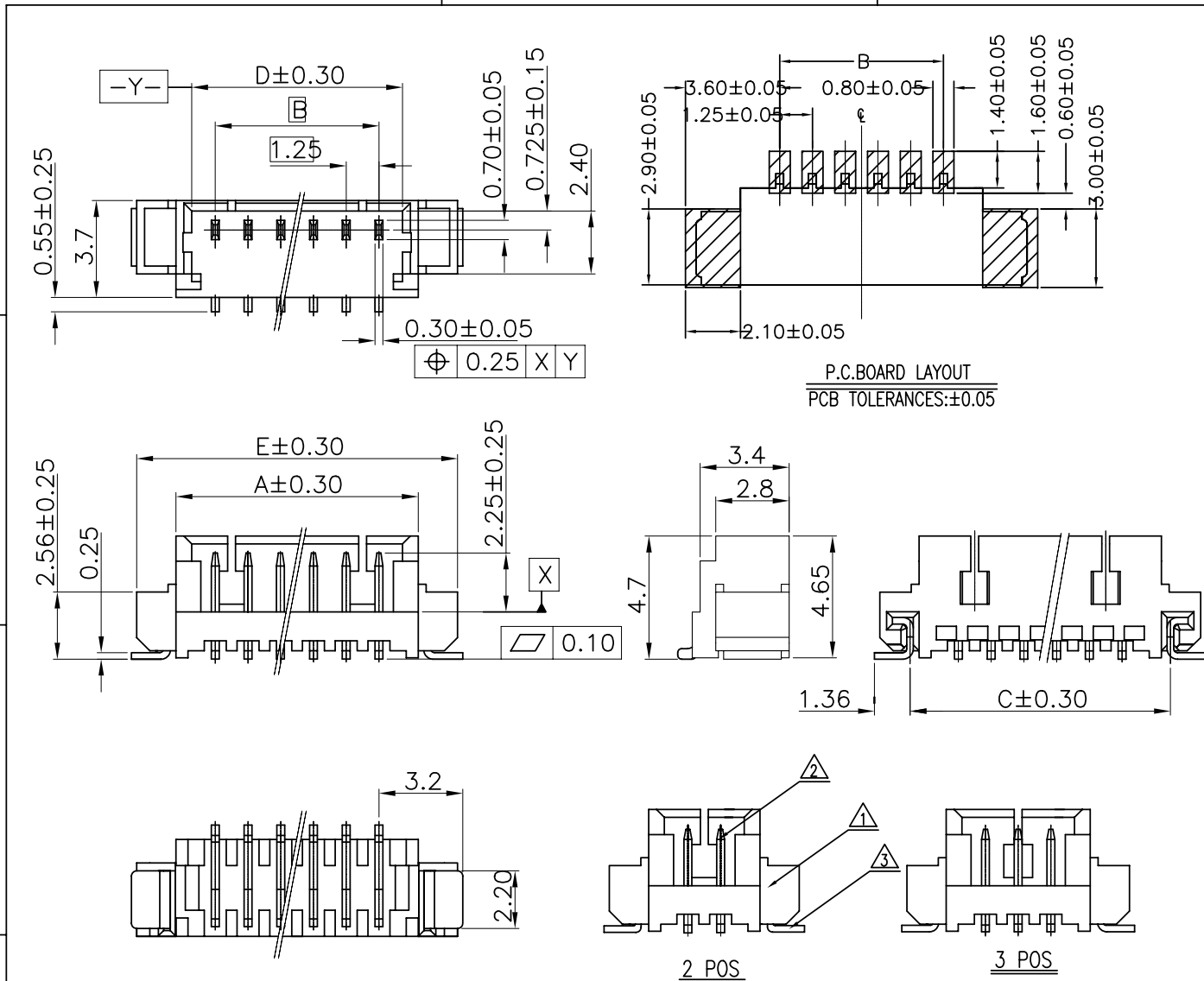




Copyright FCI.



NOTES

- SPECIFICATIONS
Current Rating: 1A AC,DC
Voltage Rating: 125V AC,DC
Temperature Range: $-40^{\circ}\text{C} \sim +105^{\circ}\text{C}$
Contact Resistance: 20m Ω Max.
Insulation Resistance: 100M Ω Min.
Withstanding Voltage: 500V AC/minute
- Material & Finish:
Housing: Natural Thermoplastic, UL94V-0
Contact and metal hold-down: Phosphor Bronze
Plating of contact: Matte Tin or gold plating over Nickel
Plating of metal hold-down: Matte Tin over Nickel
- Crimping application hand tool P/N: 10118656-1000
- Ordering Information & Dimensions:
10114828- X X X XX X LF
Material: LCP, VOID/NORMAL, SEE SHEET 2 (VOID 2&4 PIN)
Plating: Matte Tin, Gold Flash, Gold 30u"
Packaging: Tape & Reel, Tape & Reel+ Cap(sheet 2)

Part No.	Dimensions					
	POS	A	B	C	D	E
10114828-xxx02LF	2	4.25	1.25±0.10	4.94	3.05	7.25
10114828-xxx03LF	3	5.50	2.50±0.10	6.19	4.30	8.50
10114828-xxx04LF	4	6.75	3.75±0.10	7.44	5.55	9.75
10114828-xxx05LF	5	8.00	5.00±0.10	8.69	6.80	11.00
10114828-xxx06LF	6	9.25	6.25±0.15	9.94	8.05	12.25
10114828-xxx07LF	7	10.50	7.50±0.15	11.19	9.30	13.50
10114828-xxx08LF	8	11.75	8.75±0.15	12.44	10.55	14.75
10114828-xxx09LF	9	13.00	10.00±0.15	13.69	11.80	16.00
10114828-xxx10LF	10	14.25	11.25±0.20	14.94	13.05	17.25
10114828-xxx11LF	11	15.50	12.50±0.20	16.19	14.30	18.50
10114828-xxx12LF	12	16.75	13.75±0.20	17.44	15.55	19.75
10114828-xxx13LF	13	18.00	15.00±0.20	18.69	16.80	21.00
10114828-xxx14LF	14	19.25	16.25±0.20	19.94	18.05	22.25
10114828-xxx15LF	15	20.50	17.50±0.20	21.19	19.30	23.50

Note A: The LF means RoHS compliance, the housing will withstand exposure to peak temperature 260 degree C for 5 sec in the IR re-flow process.

ITEM	MATERIAL	DESCRIPTION
1	THERMOPLASTIC HIGH TEMPERATURE	HOUSING
2	COPPER ALLOY	TERMINAL
3	COPPER ALLOY	HOLD DOWN

rev	ecn no	dr	date
A	T10-0145	J H	12/1/10
H	ELX-N-17075	TIM	2014/04/28
J	ELX-N-17516	TIM	2014/04/21

www.fciconnect.com

surface ISO 1302 6.4 tolerance std ISO 406 ISO 1101 projection MM

ANGULAR LINEAR 0.X ±0.25 size A4 Scale 1.000

0.XX ±0.15 ECN

0.XXX - Spec ref

Product family WTB

Dr JASON HSU 12/1/10

Eng JASON HSU 12/1/10

Chr GARY HSIEH 12/1/10

Appr JOSEPH HSIA 12/1/10

FCI title WTB 1.25MM WAFER 180° SMT

catalog no CUSTOMER sheet 1 of 2

dwg no 10114828 Rev. J

REV F - 2006-04-17

1

2

3

4

A

B

C

D

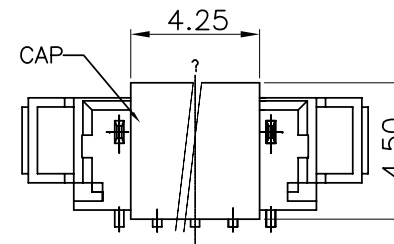
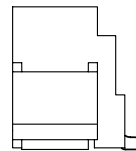
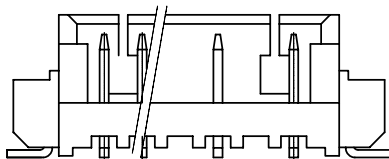
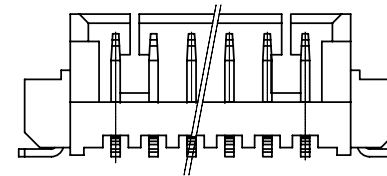
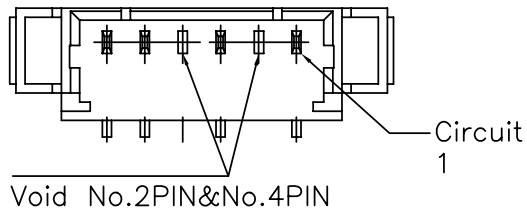
A

B

A

C

D



ASSEMBLY CAP

10114828-XXXXX1LF



Copyright FCI.

REV F - 2006-04-17

1

2

3

4

rev	ecn no	dr	date
J			

www.fciconnect.com		surface 6.4 ISO 1302	tolerance std ISO 406 ISO 1101	projection ISO 1101	MM
		TOLERANCES UNLESS OTHERWISE SPECIFIED			
Dr	JASON HSU	12/1/10	ANGULAR	0.X ±0.25	size A4 Scale 1.000
Eng	JASON HSU	12/1/10	LINEAR	0.XX ±0.15	
Chr	GARY HSIEH	12/1/10	0° ±2°	0.XXX -	ECN
Appr	JOSEPH HSIA	12/1/10	Product family	WTB	Spec ref
		title		dwg no	
		WTB 1.25MM WAFER 180° SMT		10114828	
		catalog no		CUSTOMER	
				sheet 2 of 2	
				Rev. J	

PDS: Rev :J

STATUS:Released

Printed: Apr 25, 2014

Mouser Electronics

Authorized Distributor

Click to View Pricing, Inventory, Delivery & Lifecycle Information:

[FCI / Amphenol:](#)

[10114828-10102LF](#) [10114828-10103LF](#) [10114828-10104LF](#) [10114828-10106LF](#) [10114828-10105LF](#) [10114828-10107LF](#) [10114828-10108LF](#) [10114828-10109LF](#) [10114828-10110LF](#) [10114828-10111LF](#) [10114828-10112LF](#) [10114828-10113LF](#) [10114828-10114LF](#) [10114828-10115LF](#) [10114828-11102LF](#) [10114828-11103LF](#) [10114828-11104LF](#) [10114828-11105LF](#) [10114828-11106LF](#) [10114828-11107LF](#) [10114828-11108LF](#) [10114828-11109LF](#) [10114828-11110LF](#) [10114828-11111LF](#) [10114828-11112LF](#) [10114828-11113LF](#) [10114828-11114LF](#) [10114828-11115LF](#) [10114828-13104LF](#) [10114828-101041LF](#) [10114828-101042LF](#) [10114828-101061LF](#) [10114828-111061LF](#) [10114828-13102LF](#) [10114828-11210LF](#) [10114828-11202LF](#) [10114828-11205LF](#) [10114828-13202LF](#) [10114828-10206LF](#) [10114828-10204LF](#) [10114828-13108LF](#) [10114828-11214LF](#) [10114828-10207LF](#) [10114828-131061LF](#) [10114828-10214LF](#) [10114828-11215LF](#) [10114828-101071LF](#) [10114828-111071LF](#) [10114828-10202LF](#) [10114828-13203LF](#) [10114828-13105LF](#) [10114828-10203LF](#) [10114828-10205LF](#) [10114828-10208LF](#) [10114828-13103LF](#) [10114828-10210LF](#)