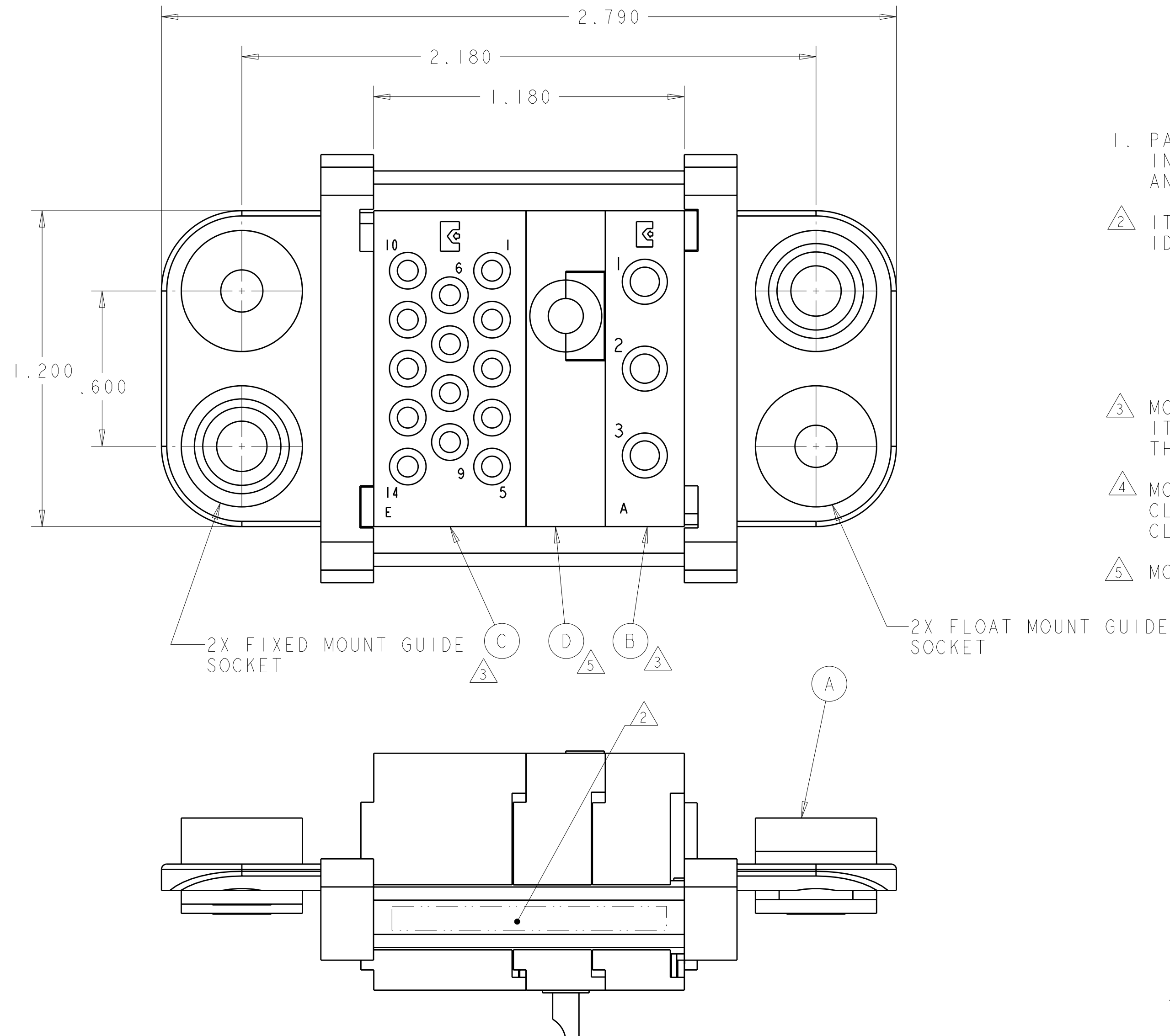


LOC	DIST	REVISIONS					
GP	00	P	LTR	DESCRIPTION	DATE	DWN	APVD
			A	RELEASED	27MAR2009	RG	DO



1. PART NUMBER CHANGES AND/OR DESIGN CHANGES AFFECTING ITEM
INTERCHANGEABILITY REQUIRE PRIOR TYCO ELECTRONICS APPROVAL
AND AUTHORIZATION BY REVISION TO THIS DRAWING.

2 ITEMS PROVIDED TO THIS SPECIFICATION TO BE PERMANENTLY IDENTIFIED PER THE FOLLOWING IDENTIFIER:

YEAR [] WEEK []

TYCO ELECTRONICS P/N

DATE CODE (e.g. 0212)

X X X X X X X - X


XXXX

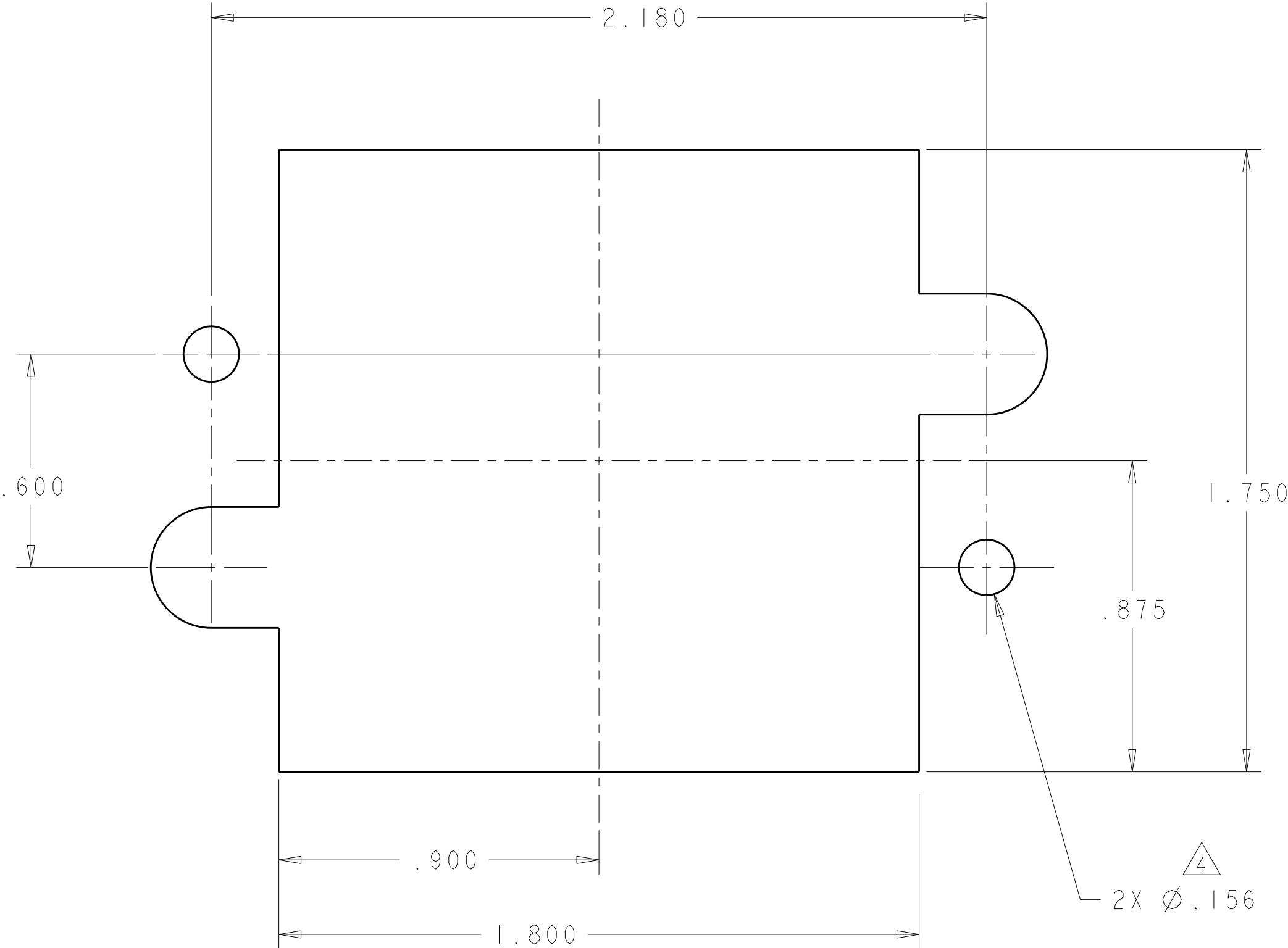
△ MODULES NOTED ARE FOR CRIMP REMOVABLE STYLE CONTACTS.
ITEMS E AND F WILL BE PACKAGED AND SHIPPED LOOSE WITH
THE CONNECTOR ASSEMBLY.

4 MOUNTING FLANGE BUSHING ACCEPTS 6/32 SCREW (.156 DIA. CLEARANCE HOLE, FLOAT MOUNT) OR 8/32 SCREW (.173 DIA. CLEARANCE HOLE, FIXED MOUNT), USER SUPPLIED.

5 MODULE "K" SOCKET CONTACT INSTALLED.

<div>5</div> <div>3</div> <div>3</div>	14	6648319-1	SOCKET CONTACTS, CRIMP, SIZE No. 16	F
	3	6648318-1	SOCKET CONTACTS, CRIMP, SIZE No. 12	E
	1	6648474-1	MODULE "K"	D
	1	1648470-1	MODULE "E"	C
	1	1648466-1	MODULE "A"	B
	2	6648252-1	END CAP, FLOAT MOUNT	A
	-1	PART NO.	DESCRIPTION	ITEM NO.

THIS DRAWING IS A CONTROLLED DOCUMENT FOR TYCO ELECTRONICS CORPORATION IT IS SUBJECT TO CHANGE AND THE CONTROLLING ENGINEERING ORGANIZATION SHOULD BE CONTACTED FOR THE LATEST REVISION.		DWN R.GRZYBOWSKI 16SEP2008		Tyco Electronics Harrisburg, PA 17105-3608	
DIMENSIONS: INCHES		TOLERANCES UNLESS OTHERWISE SPECIFIED:		NAME	
		0 PLC ±. 1 PLC ±. 2 PLC ±.25 3 PLC ±.010 4 PLC ±. ANGLES ±.		SOCKET CONNECTOR ASSEMBLY DOMINO W/ PANEL CUT-OUT	
MATERIAL		FINISH		RESTRICTED TO	
-		-		-	
CUSTOMER DRAWING				SIZE	REV
A200779				CAGE CODE	REV
C=6643970				DRAWING NO	REV
SCALE				SHEET	REV
3.1				1 OF 2	A



SOCKET PANEL MOUNT CUTOUT
COMPONENT SIDE

Mouser Electronics

Authorized Distributor

Click to View Pricing, Inventory, Delivery & Lifecycle Information:

[TE Connectivity:](#)

[6643970-1](#)