

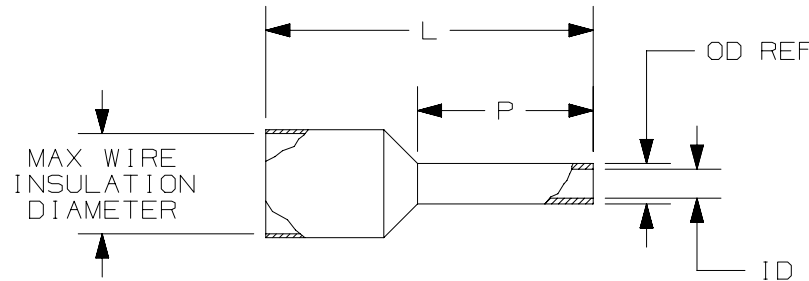
THIS COPY IS PROVIDED ON A RESTRICTED BASIS AND IS NOT TO BE USED IN ANY WAY DETRIMENTAL TO THE INTERESTS OF PANDUIT CORP.

PANDUIT PART #	WIRE RANGE		COLOR (DIN)	WIRE STRIP LENGTH +1/32 -0 [+0,8 -0]	WIRE CLASS	DIMENSIONS in. [mm]				MAX WIRE INSUL DIA	INSTALLATION TOOLS/DIES
	AWG	[mm <sup>2</sup> ]				L	P	ID	OD (REF.)		
* FSDX75-8	22-20	[0,50]	WHITE	15/32 [11,91]	B, K, M	0.53 [13,5]	0.31 [8,0]	0.04 [1,1]	0.05 [1,4]	0.12 [3,0]	CT-1002 CT-1003 CT-1090 ^CD-090 CT-1123 CT-1160 CT-1170 #CT-2523CH
FSDX76-8	18	[0,75]	GRAY	15/32 [11,91]	B, K, M	0.55 [14,0]	0.31 [8,0]	0.05 [1,3]	0.06 [1,6]	0.14 [3,4]	
FSDX77-8	-	[1,0]	RED	15/32 [11,91]	B, K, M	0.57 [14,5]	0.31 [8,0]	0.06 [1,5]	0.07 [1,8]	0.14 [3,4]	
FSDX78-8	16	[1,5]	BLACK	15/32 [11,91]	B, K, M	0.57 [14,5]	0.31 [8,0]	0.07 [1,8]	0.08 [2,1]	0.15 [3,8]	
FSDX84-12	6	[16,0]	BLUE	5/8 [15,9]	G, H, I, K, M	.91 [23,0]	0.47 [12,0]	0.24 [6,0]	0.25 [6,4]	0.37 [9,5]	

- \* UL LISTED WITH 20 AWG ONLY, UL486F SCOPE IS 20 - 1/0 AWG. WHITE IS DIN COLOR FOR 20 AWG [0,5]
- + TOOL/PART IS NOT A UL LISTED COMBINATION
- ^ DIES USED WITH CT-2300 TOOL
- # CRIMP HEAD USED WITH CT-2500 TOOL

NOTES:

1. USED FOR:
  - A. UL LISTED WITH STRANDED COPPER WIRE ONLY
  - B. 221°F [105°C] MAX. OPERATING TEMPERATURE
2. MATERIAL:
  - A. STAMPING: COPPER, TIN PLATED
  - B. HOUSING: POLYPROPYLENE, COLOR CODED
  - C. COLOR CODE CONFORMS TO DIN STANDARD
3. SEE [www.panduit.com](http://www.panduit.com) FOR PACKAGE QUANTITIES
4. DIMENSIONS IN BRACKETS ARE METRIC EQUIVALENT



TITLE						
FERRULES WITH SLEEVES SINGLE WIRE DIN END SLEEVES FSDX: LARGER SLEEVE DIAMETER CUSTOMER DRAWING						
ITEM REVISION NAME					N41752BA/08	
DATASET FILE NAME					N41752BA_DC/08	
UNLESS OTHERWISE SPECIFIED, DIMENSIONAL TOLERANCES ARE: IN [mm]					MATERIAL:	
.X ± .XX ±					SEE NOTES	
.XXX ± ANGLES ±					DRAWING NUMBER:	
THIRD ANGLE PROJECTION					A41752	
DRAWN BY	DATE	CHK	SCALE	SIZE		
JKD	-	SKB	N.T.S.	SHEET 1 OF 1		

REV	DATE	BY	CHK	APR	DESCRIPTION	ECN
08	3/17	TMR	TMR	RGB	ADDED TOOL INFORMATION RELATED TO CT-2500 TOOL	A41752
07	11/16	JHNU	JLOV	RGB	ADDED CT-1090, CT-2300, CT-1160, CT-1170	A41752
06	8/16	JHNU	JLOV	RGB	ADDED CT-2523CH, CT-2504CH	A41752
05	6/15	JHNU	JHNU	RGB	REVISED STRIP LENGTH FOR PSDX84-12: 5/8 WAS 7/8	A41752
04	6/15	TMR	RGB	VMB	UL LISTED, ADDED WIRE CLASS, MAX WIRE INSUL DIA TO DRWG	A41752