

# Customer Information Sheet

DRAWING No.: M22-202XXXX

SHEET 2 OF 2

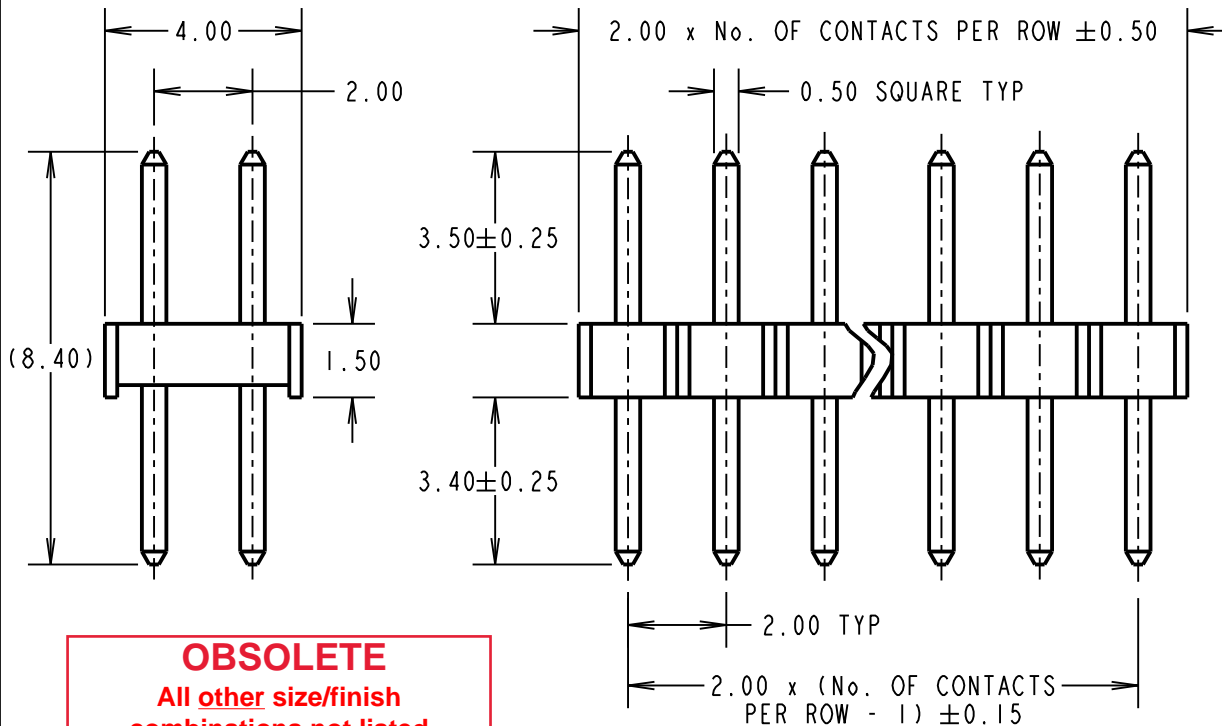
IF IN DOUBT - ASK

©

NOT TO SCALE

THIRD ANGLE PROJECTION

ALL DIMENSIONS IN mm

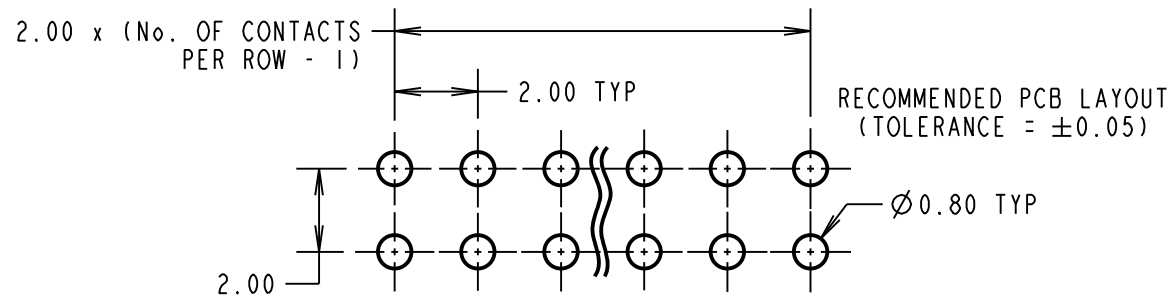


**OBSOLETE**  
All other size/finish combinations not listed

ORDER CODE:  
**M22-202XXXX**

No. OF CONTACTS PER ROW:  
02 TO 25, 50

FINISH:  
05 = GOLD OVER NICKEL  
46 = 100% TIN OVER NICKEL



**SPECIFICATIONS:**

**MATERIAL:**  
MOULDING = NYLON 6T, UL94V-0, BLACK  
CONTACTS = PHOSPHOR BRONZE

**FINISH:**  
05 = GOLD OVER NICKEL  
46 = 100% TIN OVER NICKEL

**ELECTRICAL:**  
CURRENT RATING = 2A  
VOLTAGE PROOF = 500V AC FOR ONE MINUTE  
CONTACT RESISTANCE = 20mΩ MAX  
INSULATION RESISTANCE = 1,000MΩ MIN

**MECHANICAL:**  
DURABILITY = 300 OPERATIONS (GOLD), 50 OPERATIONS (TIN)  
INSERTION FORCE = 2N MAX  
WITHDRAWAL FORCE = 0.3N MIN

**ENVIRONMENTAL:**  
TEMPERATURE RANGE = -40°C TO +105°C

**PACKING:**  
BAG

FOR COMPLETE SPECIFICATION, SEE  
COMPONENT SPECIFICATION C018XX (LATEST ISSUE)

**NOTES:**

1. ALL TOLERANCES ARE ±0.20 UNLESS OTHERWISE STATED.

**Active products:**

- M22-2020205
- M22-20203XX
- M22-20204XX
- M22-20205XX
- M22-2020605
- M22-2020705
- M22-2020805
- M22-2021005
- M22-2021205
- M22-2021305

- M22-2021405
- M22-2021505
- M22-2021605
- M22-20217XX
- M22-2021846
- M22-2022005
- M22-2022205
- M22-2022405
- M22-2025005

LS	12	01.11.17	20898
NAME	ISS.	DATE	C/NOTE
APPROVED: LS			
CHECKED: MGP			
DRAWN: P. D. COLLINS			
CUSTOMER REF.:			
ASSEMBLY DRG:			

**HARWIN**

www.harwin.com  
technical@harwin.com

THIS DRAWING AND ANY INFORMATION OR DESCRIPTIVE MATTER SET OUT HEREON ARE CONFIDENTIAL AND COPYRIGHT PROPERTY OF THE HARWIN GROUP AND MUST NOT BE DISCLOSED, LOANED, COPIED OR USED FOR MANUFACTURING, TENDERING OR FOR ANY OTHER PURPOSE WITHOUT THEIR WRITTEN PERMISSION.

**TOLERANCES**  
~~X = ±1mm~~  
~~X.X = ±0.50mm~~  
~~X.XX = ±0.10mm~~  
~~X.XXX = ±0.01mm~~  
ANGLES = ±5°  
UNLESS STATED

**MATERIAL:**  
SEE ABOVE

**FINISH:**  
SEE ABOVE

**S/AREA:** mm<sup>2</sup>

**TITLE:**  
2.00mm PITCH DIL VERTICAL PIN HEADER ASSEMBLY

**DRAWING NUMBER:**  
**M22-202XXXX**

SHT 2 OF 2

# Mouser Electronics

Authorized Distributor

Click to View Pricing, Inventory, Delivery & Lifecycle Information:

## Harwin:

[M22-2020205](#) [M22-2020246](#) [M22-2020305](#) [M22-2020346](#) [M22-2020405](#) [M22-2020446](#) [M22-2020505](#) [M22-2020546](#) [M22-2020605](#) [M22-2020646](#) [M22-2020705](#) [M22-2020746](#) [M22-2020805](#) [M22-2020846](#) [M22-2020905](#) [M22-2020946](#) [M22-2021005](#) [M22-2021046](#) [M22-2021105](#) [M22-2021146](#) [M22-2021205](#) [M22-2021246](#) [M22-2021305](#) [M22-2021346](#) [M22-2021405](#) [M22-2021446](#) [M22-2021505](#) [M22-2021546](#) [M22-2021605](#) [M22-2021646](#) [M22-2021705](#) [M22-2021746](#) [M22-2021805](#) [M22-2021846](#) [M22-2021905](#) [M22-2021946](#) [M22-2022005](#) [M22-2022046](#) [M22-2022105](#) [M22-2022146](#) [M22-2022205](#) [M22-2022246](#) [M22-2022305](#) [M22-2022346](#) [M22-2022405](#) [M22-2022446](#) [M22-2022505](#) [M22-2022546](#) [M22-2025005](#) [M22-2025046](#)