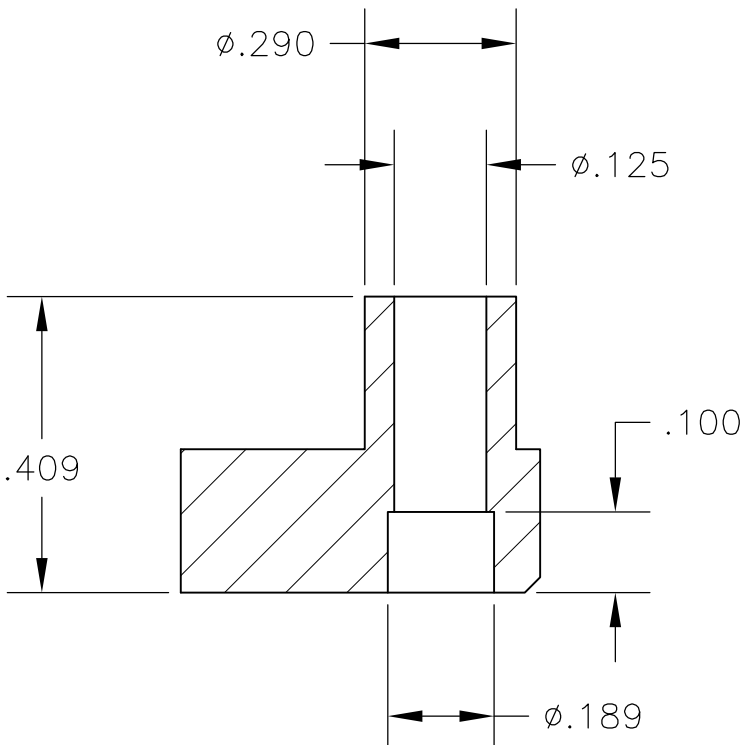
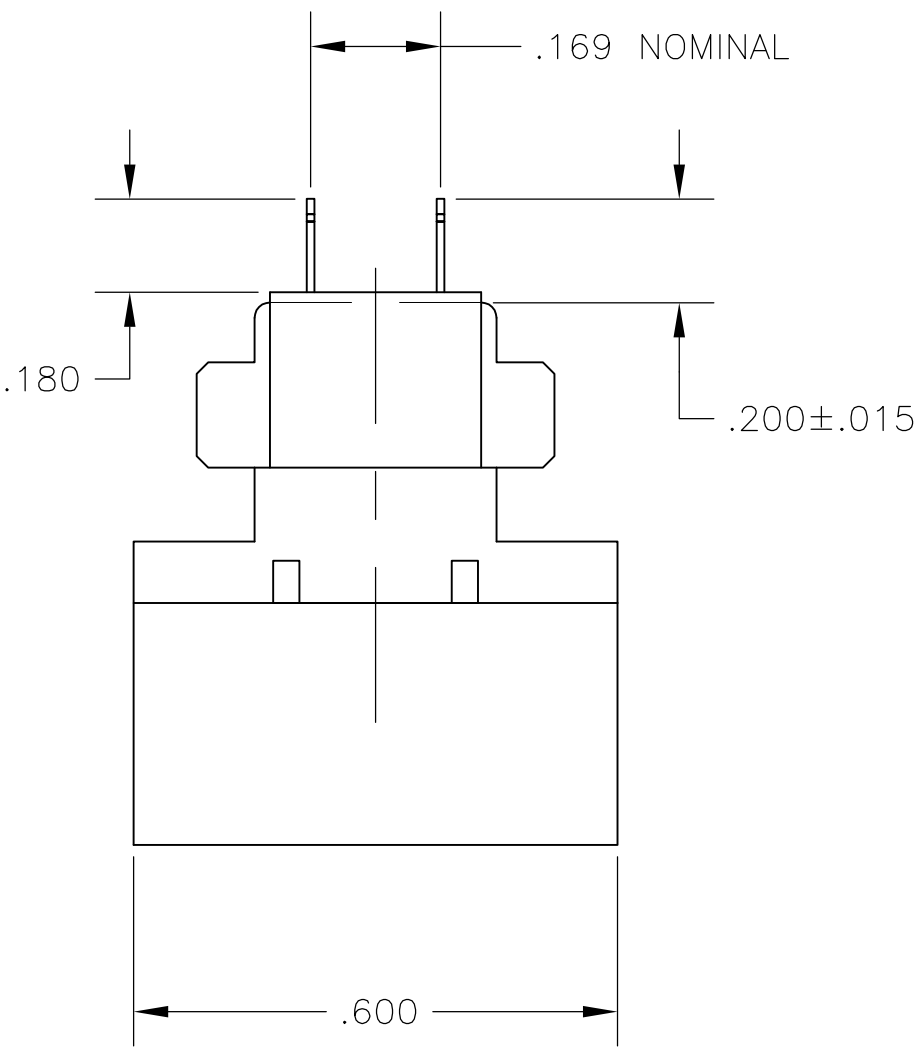
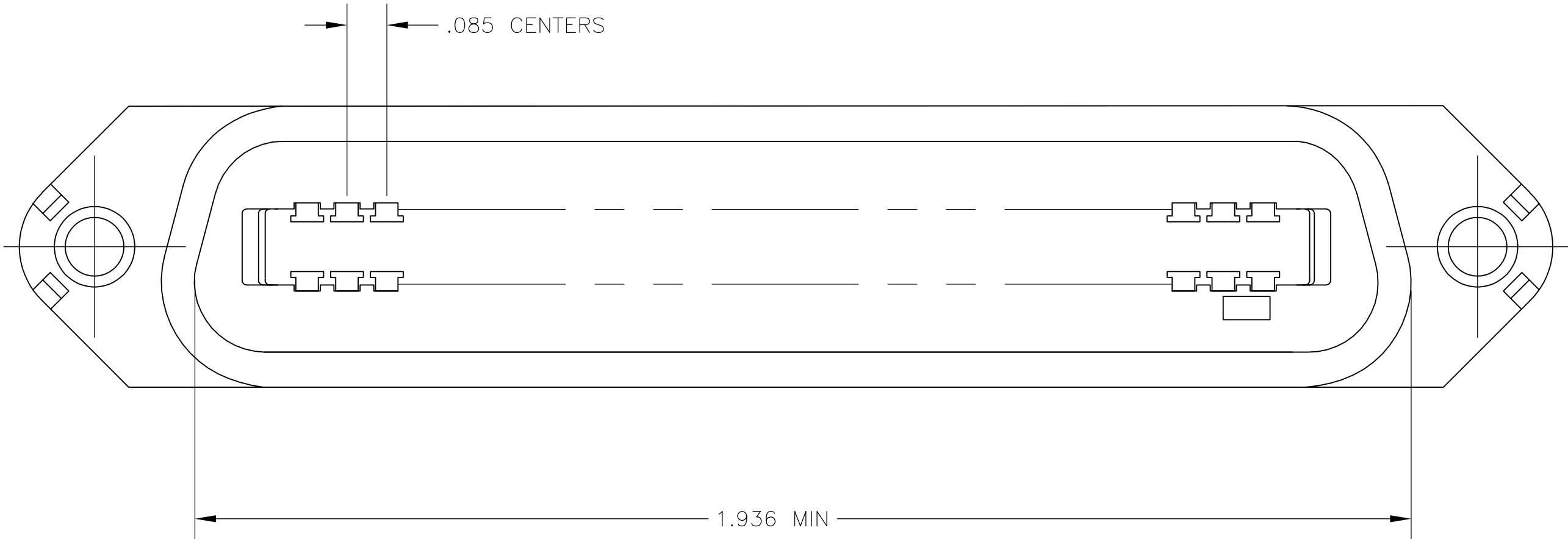
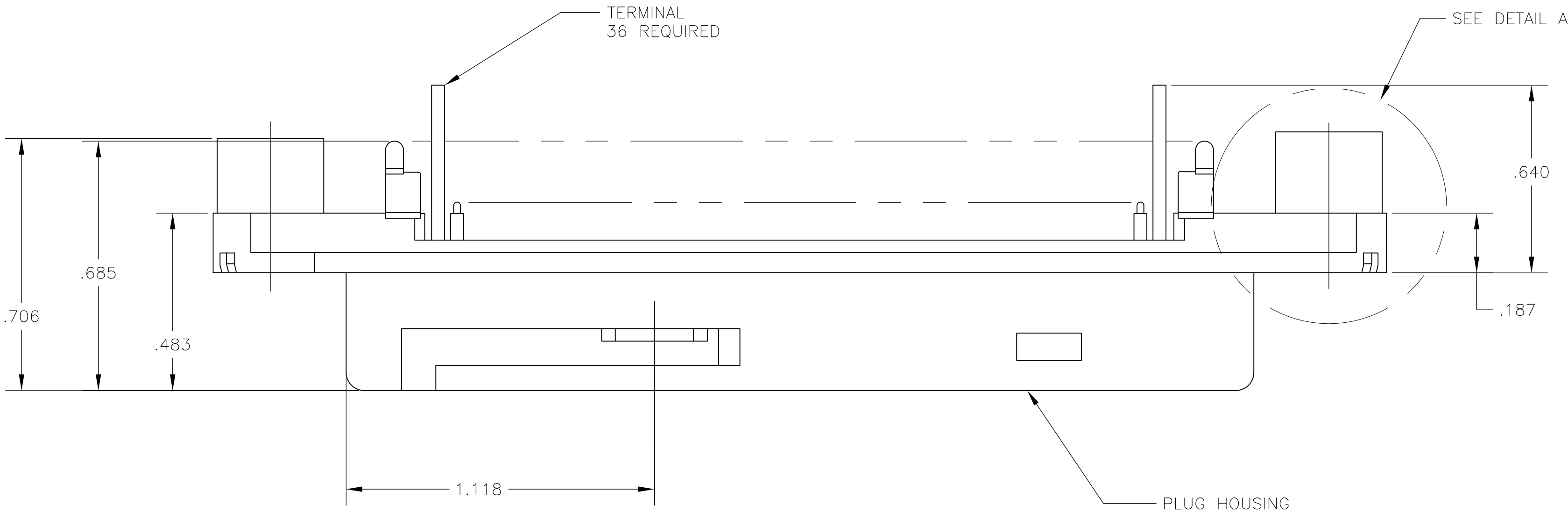
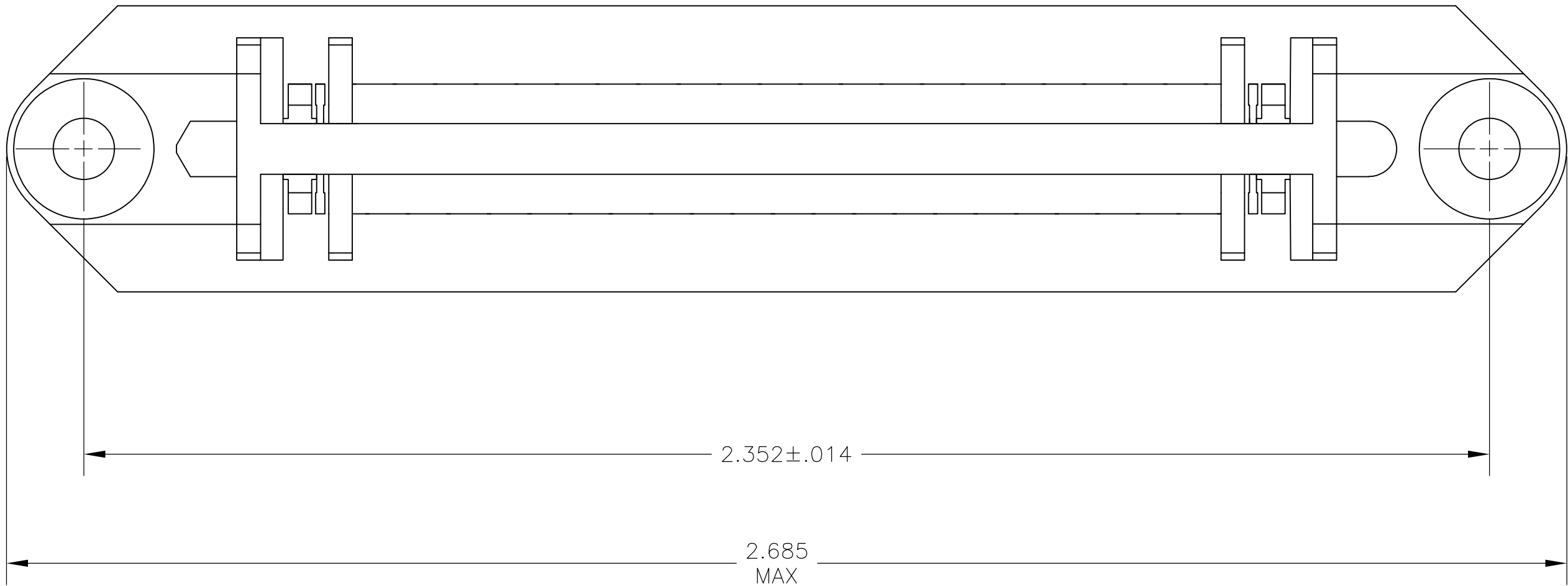







LOC		DIST		REVISIONS				
GP	00	P	LTR	DESCRIPTION		DATE	DWN	APVD
		B		REVISED PER ECO-08-007327		22JUL08	BM	WM

1. THE CONTACT SURFACES OF THE TERMINALS ARE COATED WITH LUBRICANT.
2. MATERIAL: HOUSING - THERMOPLASTIC, BLACK.
TERMINAL - PHOS BRONZE PLATED WITH EITHER .000030 MINIMUM GOLD PLATE OR GOLD FLASH OVER PALLADIUM NICKEL PLATE, .000030 MINIMUM TOTAL ON MATING SURFACE. .000120 MINIMUM TIN ON TAILS OVER .000050 MINIMUM NICKEL UNDERPLATE OVER ENTIRE TERMINAL.
3. ALL DIMENSIONS SHOWN ARE FOR REFERENCE ONLY UNLESS OTHERWISE SPECIFIED.



DETAIL A

5552232-1
PART
NUMBER

THIS DRAWING IS A CONTROLLED DOCUMENT.				DWN B. LATTUCA	22AUG05	 Tyco Electronics Corporation Harrisburg, PA 17105-3608															
				CHK W. MILLHIMES	22AUG05																
DIMENSIONS: INCHES		TOLERANCES UNLESS OTHERWISE SPECIFIED:				APVD M. WALMSLEY	22AUG05	NAME													
						PRODUCT SPEC		PLUG ASSY, 36 POSN, VERT MTG, CHAMP-LOK													
						APPLICATION SPEC		-													
						WEIGHT		-													
						SIZE		CAGE CODE		DRAWING NO		RESTRICTED TO									
MATERIAL		FINISH				A1		00779		C=5552232		-									
						CUSTOMER DRAWING				SCALE		4:1		SHEET		1 OF 1		REV		B	

Mouser Electronics

Authorized Distributor

Click to View Pricing, Inventory, Delivery & Lifecycle Information:

[TE Connectivity:](#)

[5552232-1](#)