

General Specifications

Electrical Capacity (Resistive Load)

Logic Level: 0.4VA maximum @ 28V AC/DC maximum
(Applicable Range 0.1mA ~ 0.1A @ 20mV ~ 28V)
Note: Find additional explanation of operating range in Supplement section.

Other Ratings

Contact Resistance: 50 milliohms maximum
Insulation Resistance: 500 megohms minimum @ 500V DC
Dielectric Strength: 500V AC minimum for 1 minute minimum
Mechanical Life: 50,000 operations minimum
Electrical Life: 50,000 operations minimum
Nominal Operating Force: 2.55N
Contact Timing: Nonshorting (break-before-make)
Travel: Pretravel .028" (0.7mm); Overtravel .016" (0.4mm); Total Travel .043" (1.1mm)

Materials & Finishes

Plunger: Polyacetal
Case Housing: Glass fiber reinforced polyamide
Support Bracket: Tin plated phosphor bronze
Movable Contact: Phosphor bronze with gold plating
Stationary Contacts: Brass with gold plating
Terminals: Brass with gold plating

Environmental Data

Operating Temp Range: -30°C through +85°C (-22°F through +185°F)
Humidity: 90 ~ 95% humidity for 96 hours @ 40°C (104°F)
Vibration: 10 ~ 55Hz with peak-to-peak amplitude of 1.5mm traversing the frequency range & returning in 1 minute; 3 right angled directions for 2 hours
Shock: 50G (490m/s²) acceleration (tested in 6 right angled directions, with 5 shocks in each direction)

Installation

Cap Installation Force: 49.03N (11.2 lbf) maximum downward force on actuator

PCB Processing

Soldering: Wave Soldering Recommended: See Profile A in Supplement section.
Manual Soldering: See Profile B in Supplement section.
Cleaning: Automated cleaning. See Cleaning specifications in Supplement section.

Standards & Certifications

The AB Series pushbuttons have not been tested for UL recognition or CSA certification. These switches are designed for use in a low-voltage, low-current, logic-level circuit. When used as intended in a logic-level circuit, the results do not produce hazardous energy.

Distinctive Characteristics

Subminiature size (1/3 size of Series M switches) saves space on PC boards.

Specifically developed for logic-level applications.

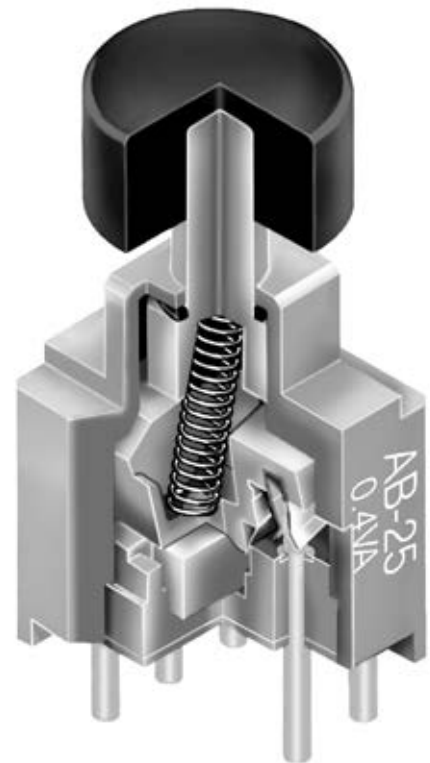
Totally sealed body construction prevents contact contamination and allows time- and money-saving automated soldering and cleaning.

Award-winning STC contact mechanism with benefits unavailable in conventional mechanisms: smoother, positive detent actuation, increased contact stability and unparalleled logic-level reliability. (Additional STC details in Terms & Acronyms; see Supplement section.)

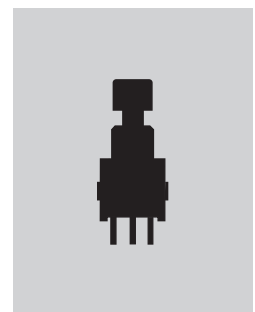
Molded-in, epoxy sealed or ultrasonically welded terminals lock out flux, solvents, and other contaminants.

.100" x .100" (2.54mm x 2.54mm) terminal spacing conforms to standard PC board grid spacing.

Matching indicators available.

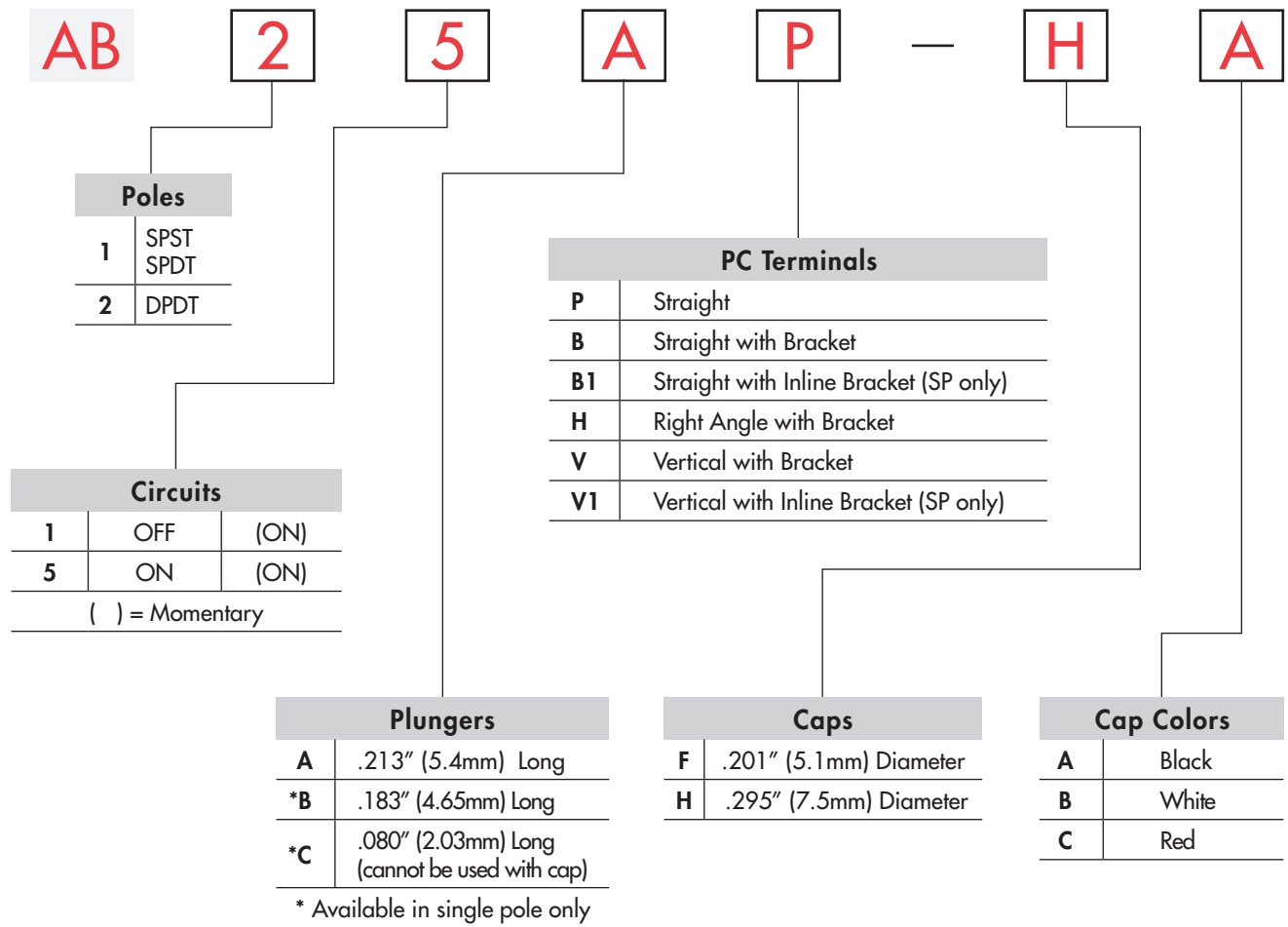


Actual Size



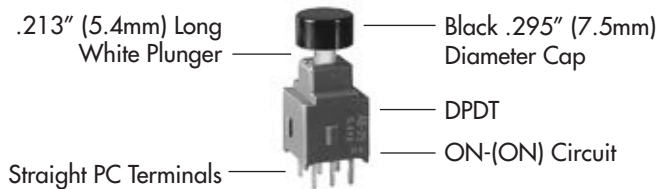
- Supplement
- Accessories
- Indicators
- Touch
- Tilt
- Tactiles
- Slides
- Rotaries
- Keylocks
- Programmable
- Illuminated PB
- Pushbuttons
- Rockers
- Toggles

TYPICAL SWITCH ORDERING EXAMPLE



DESCRIPTION FOR TYPICAL ORDERING EXAMPLE

AB25AP-HA



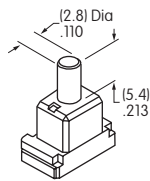
Toggles
 Rockers
 Pushbuttons
 Illuminated PB
 Programmable
 Keylocks
 Rotaries
 Slides
 Tactiles
 Tilt
 Touch
 Indicators
 Accessories
 Supplement

POLES & CIRCUITS

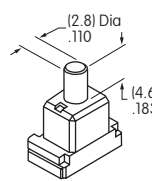
Pole	Model	Plunger Position () = Momentary		Connected Terminals		Throw & Schematics
		Normal	Down	Normal	Down	
SP	AB11	OFF 	(ON) 	OPEN 	3-1 	SPST Note: Terminal numbers are not actually on the switch.
SP	AB15	ON 	(ON) 	2-3 	2-1 	SPDT
DP	AB25	ON 	(ON) 	2-3 5-6 	2-1 5-4 	DPDT

PLUNGERS

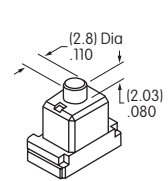
A .213" (5.4mm)
Long



B .183" (4.6mm)
Long
(on SP only)



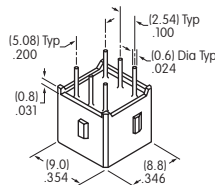
C .080" (2.03mm)
Long
(on SP only)



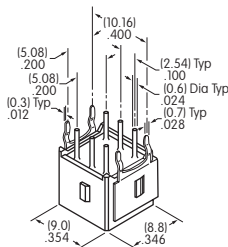
Standard Plunger Color: White Contact factory for red or black options.

PC TERMINALS

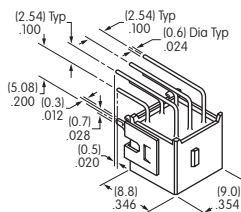
P Straight



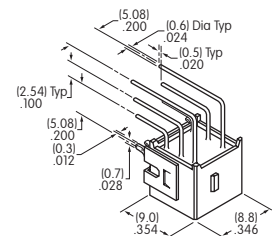
B Straight
with Bracket



H Right Angle
with Bracket



V Vertical
with Bracket

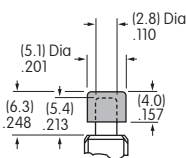


Use of a support bracket is recommended to increase PCB mounting strength and stability.
B1 & V1 terminal dimensions appear on the pushbutton drawings which follow.

SLIP-ON CAPS

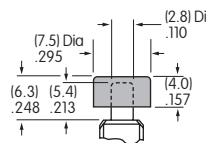
F AT475
.201" (5.1mm) Diameter Cap

Material: Polyamide
For use with plungers A & B only.



H AT496
.295" (7.5mm) Diameter Cap

Material: Polyamide
For use with plungers A & B only.



Colors Available:

A Black

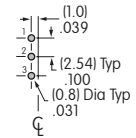
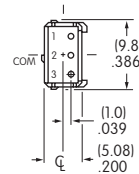
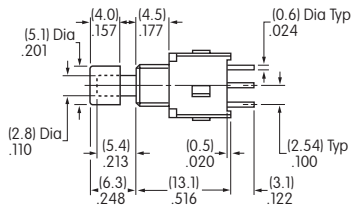
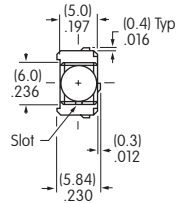
B White

C Red

TYPICAL SWITCH DIMENSIONS

Straight PC

Single Pole

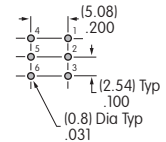
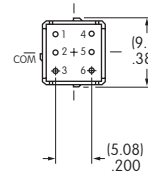
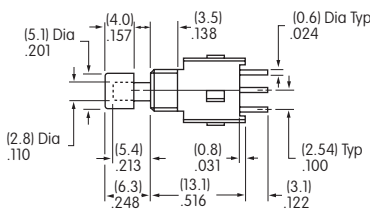
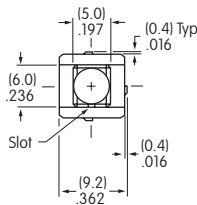


AB15AP-FA

AB11 model does not have terminal 2.

Straight PC

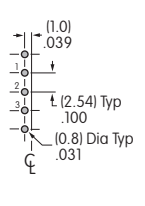
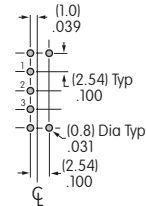
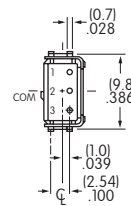
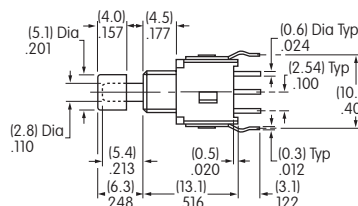
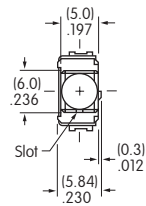
Double Pole



AB25AP-FA

Straight PC • Bracket

Single Pole



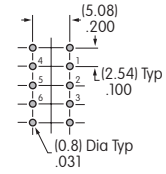
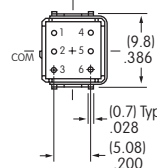
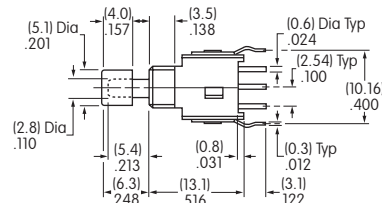
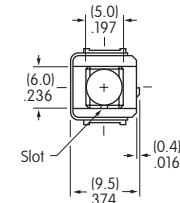
AB15AB-FA

B Terminals

B1 Terminals

Straight PC • Bracket

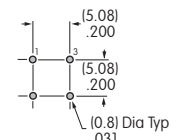
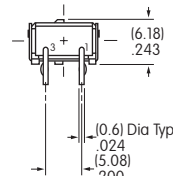
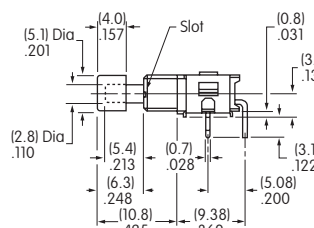
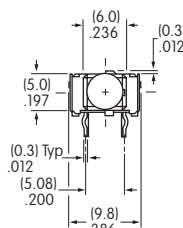
Double Pole



AB25AB-FA

Right Angle PC

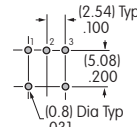
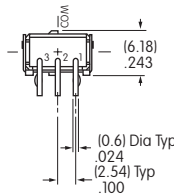
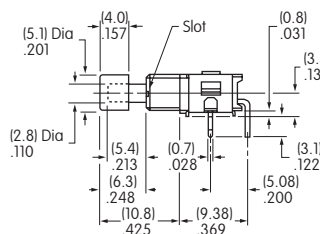
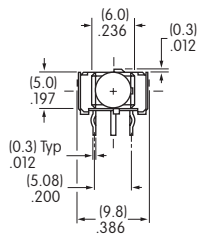
Single Pole (Single Throw)



AB11AH-FA

TYPICAL SWITCH DIMENSIONS

Single Pole (Double Throw)

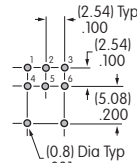
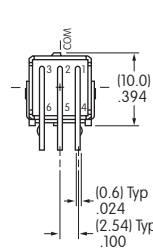
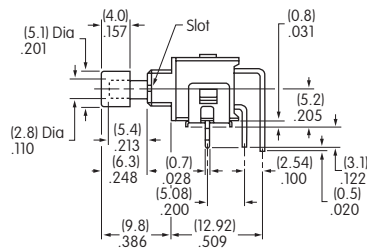
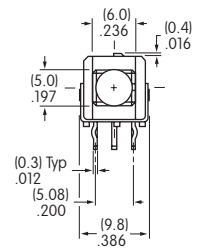


Right Angle PC



AB15AH-FA

Double Pole



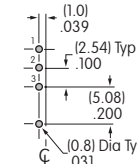
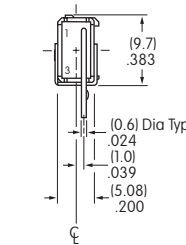
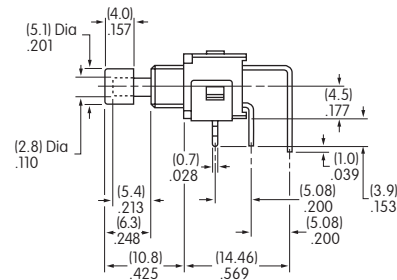
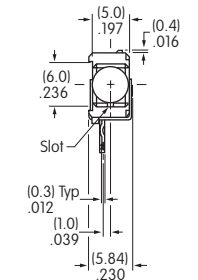
Right Angle PC



AB25AH-FA

Single Pole

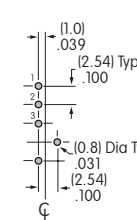
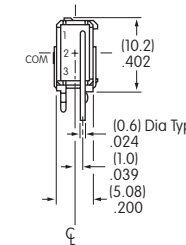
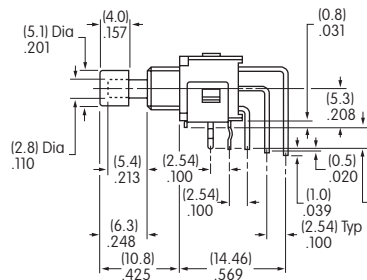
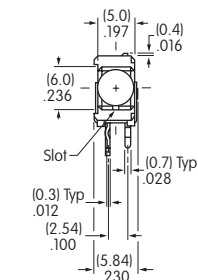
Vertical PC • Inline Bracket



AB11 model does not have terminal 2. **AB11AV1-FA**

Single Pole

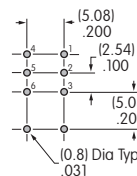
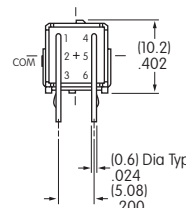
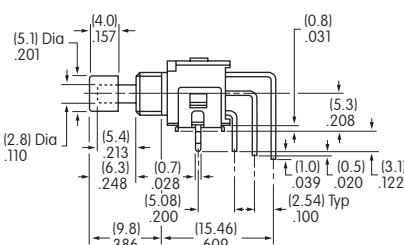
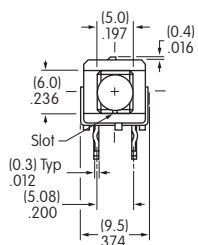
Vertical PC



AB11 model does not have terminal 2. **AB15AV-FA**

Double Pole

Vertical PC



AB25AV-FA

Mouser Electronics

Authorized Distributor

Click to View Pricing, Inventory, Delivery & Lifecycle Information:

NKK Switches:

[MB2065LS1W01-BC](#) [AB11AP-FA](#) [AB11AP-HC](#) [AB15AH](#) [AB15AP](#) [AB11AP](#) [AB15BB1-FB](#) [AB25AP](#) [AB15AH-FA-RO](#) [AB11AH-RO](#) [AB11AH-FA-RO](#) [LB15RKW01-C/AT4057](#) [MB2011SD3A01](#) [MB2411A2G03](#) [MB2411E2G07](#) [MB2411E2W03](#) [M2B15AA5A30](#) [MB2065SS1G40](#) [MB2411A2A40](#) [AB11AB1-FA-RO](#) [AB11BW](#) [AB11CH-RO](#) [AB11CV1-RO](#) [AB15AB-HA-RO](#) [AB15AB-RO](#) [AB15AB1-FA-RO](#) [AB15AH-FC-RO](#) [AB15AV/328-RO](#) [AB15AW](#) [AB15BW](#) [AB25AW](#) [AB15AW-HB](#) [AB15CP](#) [AB15AB-FC-RO](#) [AB11AH-HB-RO](#) [AB15AH-RO](#) [AB25AH-RO](#) [AB15AB-FA-RO](#) [AB11AV-HA-RO](#) [AB15AV-RO](#) [AB15BV-FA-RO](#) [AB11AP-FC](#) [AB11AP-HA](#) [AB11AP-HB](#) [AB11AB-HA](#) [AB11AB1-HA](#) [AB11AV-FA](#) [AB11BP-FA](#) [AB11BP-FC](#) [AB11BP-HA](#) [AB11BP-HC](#) [AB11BH-FA](#) [AB11BH-FC](#) [AB11BH-HC](#) [AB11CP](#) [AB11CV](#) [AB15AP-FA](#) [AB15AP-FB](#) [AB15AP-FC](#) [AB15AP-HA](#) [AB15AP-HB](#) [AB15AP-HC](#) [AB15AB-FC](#) [AB15AB-HC](#) [AB15AB1-FA](#) [AB15AH-FC](#) [AB15AV-FA](#) [AB15BP-FA](#) [AB15BP-FB](#) [AB15BP-FC](#) [AB15BV-HA](#) [AB25AP-FA](#) [AB25AP-FC](#) [AB25AP-HB](#) [AB25AP-HC](#) [AB25AV-HA](#) [AB25AV-HB](#) [MB2065LS1W01-CA](#) [MB2011SD3A01-CA](#) [MB2011SB1W02-DA](#) [AB11AW](#) [AB11BP](#) [AB11CW](#) [AB15AV1](#) [AB15AW-FA](#) [AB25AW-HA](#) [AB11AH-FC-RO](#) [AB11AH-HA-RO](#) [AB11AH-HC-RO](#) [AB11AV1-FA-RO](#) [AB11AV1-HA-RO](#) [AB11AV-RO](#) [AB11BV-FA-RO](#) [AB11BV-FC-RO](#) [AB15AH-HA-RO](#) [AB15AH-HB-RO](#) [AB15AV-FA-RO](#) [AB15AV-FB-RO](#) [AB15AV-FC-RO](#) [AB25AH-FA-RO](#)