

**BACKSHELL KIT INCLUDES:**

- (2) BACKSHELL HALVES
- (2) 4-40 MATING SCREWS
- (2) STRAIN RELIEF CLAMPS
- (2) STRAIN RELIEF SCREWS
- (1) CABLE SLOT SHUT-OFF
- (3) HOUSING SCREWS

SERIES \_\_\_\_\_

POSITIONS \_\_\_\_\_

009

015

025

037

050

MATERIAL \_\_\_\_\_

010 = PLASTIC

020 = METALIZED PLASTIC

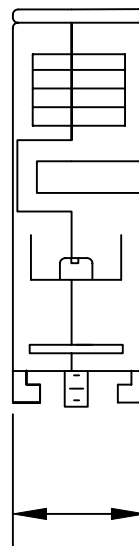
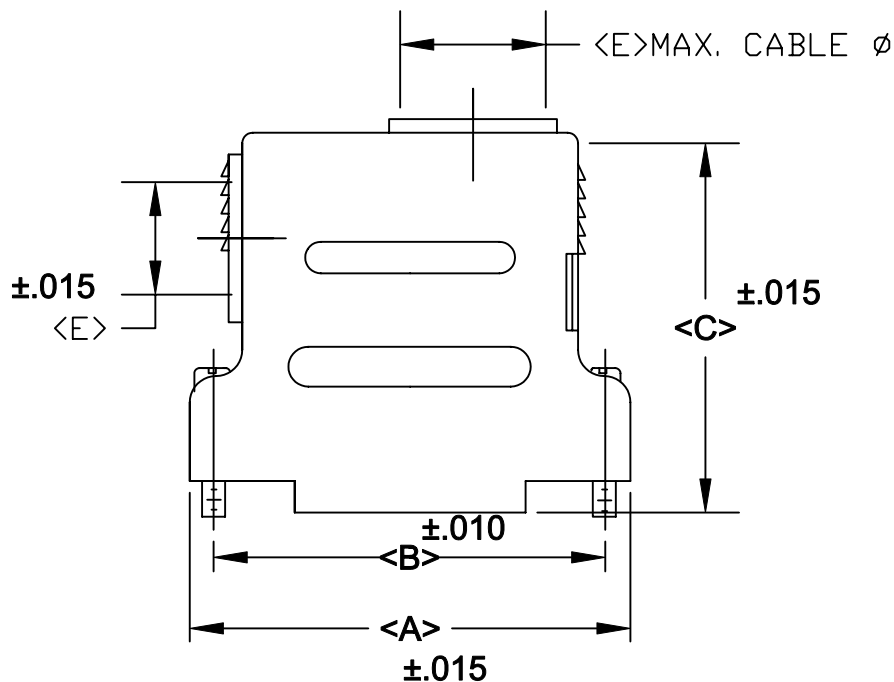
COLOR: \_\_\_\_\_

03 = GREY

12 = NICKEL OVER COPPER

PUT-UPS \_\_\_\_\_

1 = KIT



**NOTE: 9 POSITION DOES NOT HAVE 90 DEGREE ENTRY AND HAS ONLY (1) STRAIN RELIEF CLAMP.**

POS.	A	B	C	D	E
9	1.230	.984	1.380	.630	.350
	31.24	24.99	35.05	16.00	8.89
15	1.560	1.312	1.610	.630	.374
	39.62	33.32	40.89	16.00	9.50
25	2.100	1.852	1.810	.630	.444
	53.34	47.04	45.97	16.00	11.18
37	2.740	2.500	1.810	.630	.444
	69.60	63.50	45.97	16.00	11.18
50	2.650	2.406	1.810	.735	.543
	67.31	61.00	45.97	18.67	13.79

**MATERIALS: THERMOPLASTIC**  
**U.L.94V-0 (GREY)**  
**OPERATING TEMP: -55° TO 140° C**  
**METALIZED PLASTIC: NICKEL OVER COPPER**

**RoHS COMPLAINT**



THESE DRAWINGS AND SPECIFICATIONS ARE THE PROPERTY OF NorComp AND SHALL NOT BE REPRODUCED, COPIED OR USED AS THE BASIS FOR THE MANUFACTURE OR SALE OF APPARATUS WITHOUT WRITTEN PERMISSION.

DRAWN: **PAM JENKINS**

DATE: **3-8-06**

CHECKED:

DATE:

**NorComp**

SCALE \_\_\_\_\_ SHEET **1** OF **1** REV **3**

DWG NO. **982-YYY-0Y0RYY1**

# Mouser Electronics

Authorized Distributor

Click to View Pricing, Inventory, Delivery & Lifecycle Information:

[NorComp:](#)

[982-009-010R031](#) [982-009-020R121](#) [982-015-010R031](#) [982-015-020R121](#) [982-025-010R031](#) [982-025-020R121](#)  
[982-037-010R031](#) [982-037-020R121](#) [982-050-010R031](#) [982-050-020R121](#)