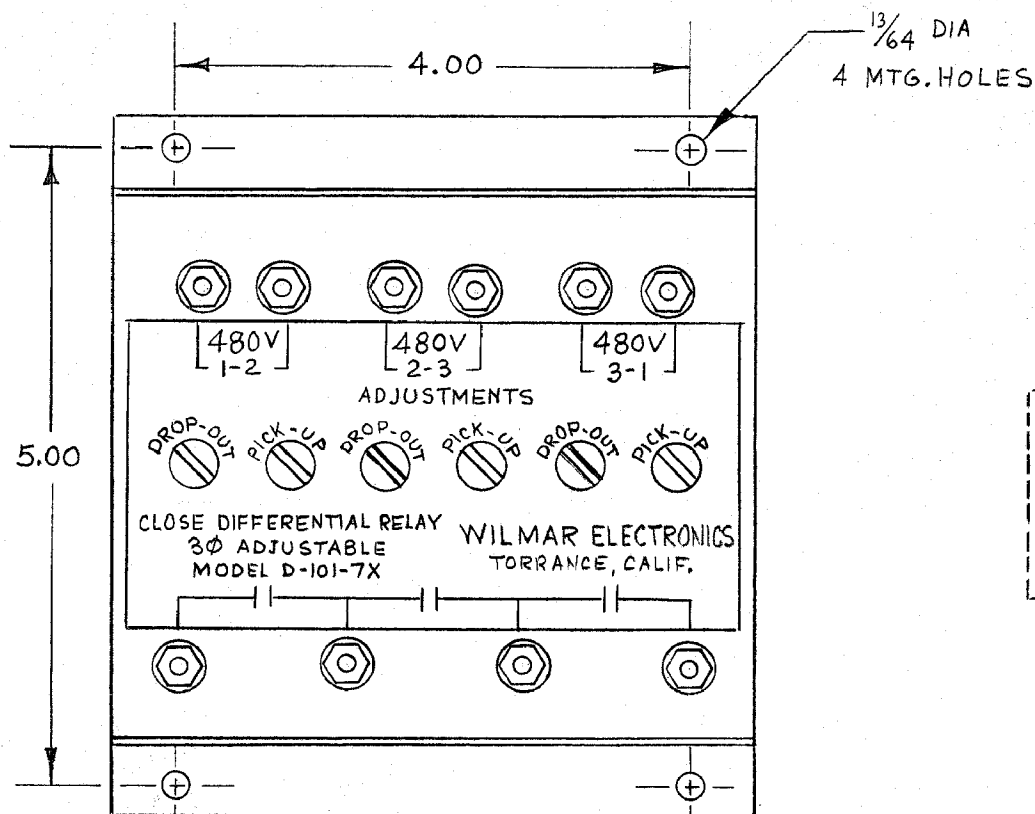
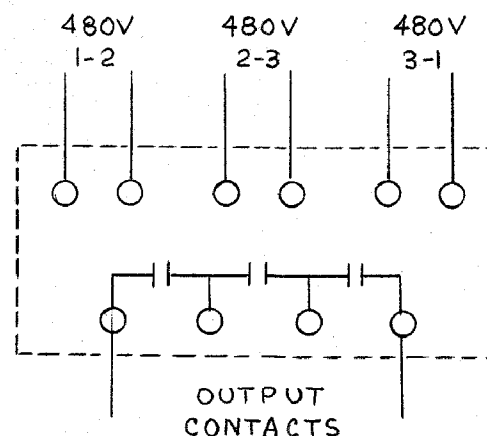


REVISIONS				
ZONE	LTR	DESCRIPTION	DATE	APPROVED

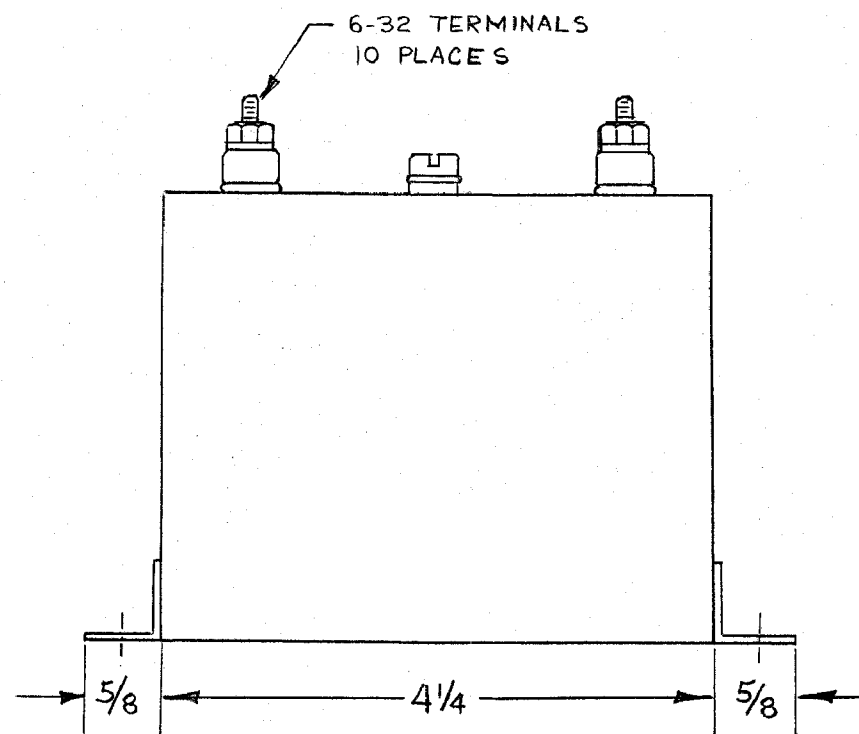
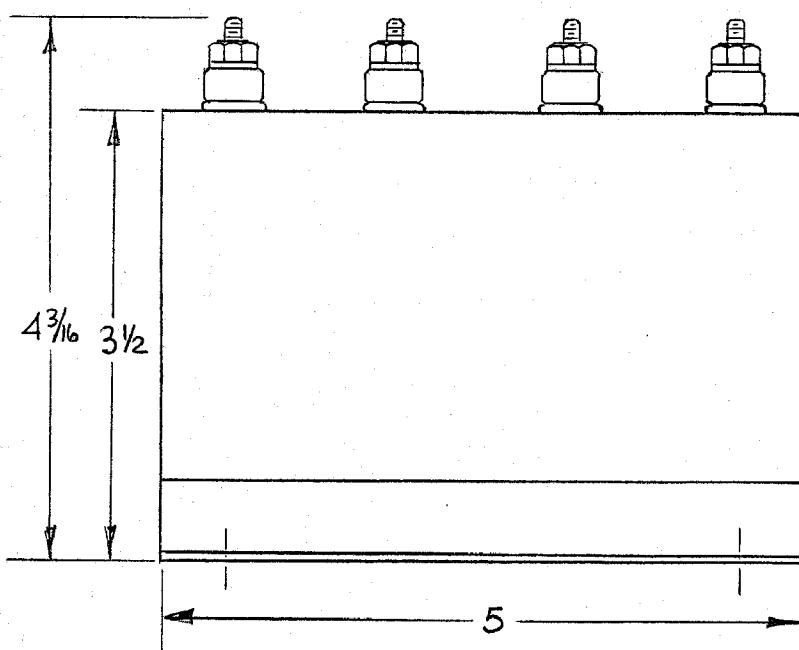


CONNECTIONS



SPECIFICATIONS

NOMINAL VOLTAGE : 480VAC, 3 ϕ , 3WIRE, 50/60 Hz.
PICK-UP ADJUST RANGE: 320-480 VOLTS
DROP-OUT ADJUST RANGE: 320-480 VOLTS
MAX. DIFFERENTIAL SETTING : 160 VOLTS
MIN. DIFFERENTIAL SETTING : 8 VOLTS
OUTPUT CONTACTS : 5AMP. RESISTIVE AT 120VAC OR 28VDC
CONSTRUCTION : SOLID STATE SENSOR WITH RELAY
OUTPUT ENCLOSED IN A SEALED STEEL CAN.



- NOTES: 1. REMOVE SCREWS FOR ACCESS TO PICK-UP AND DROP-OUT ADJUSTMENTS.
2. CLOCKWISE ROTATION OF THE ADJUSTING POTENTIOMETER WILL RAISE THE TRIP POINT. (USE SCREWDRIVER FOR ADJUSTMENT).

UNLESS OTHERWISE SPECIFIED DIMENSIONS ARE IN INCHES		CONTRACT NO.		CODE IDENT NO.		PART NO.		SPEC		MATERIAL OR NOTE		ITEM NO.	
TOLERANCES ON FRACTIONS DECIMALS ANGLES		DRAWN E.R.H. 9-20-73		9/20/73		TITLE		C		25248		21-224	
± 1/32 ± .010 ± 1/2°		CHECKED J.C.H.		DESIGN APPROVAL		PROJECT APPROVAL		DESIGN ACTIVITY APPROVAL		SCALE 1:1		WEIGHT	
BREAK ALL SHARP EDGES .015 MAX. AND DEBURR		MATERIAL:		APPROVAL		SHEET		SHEET		SHEET		SHEET	
NEXT ASSY USED ON		APPLICATION		C		25248		21-224		SCALE 1:1		WEIGHT	

Mouser Electronics

Authorized Distributor

Click to View Pricing, Inventory, Delivery & Lifecycle Information:

[TE Connectivity:](#)

[D101-7X](#)