

Features

- Low ripple
- Small Size

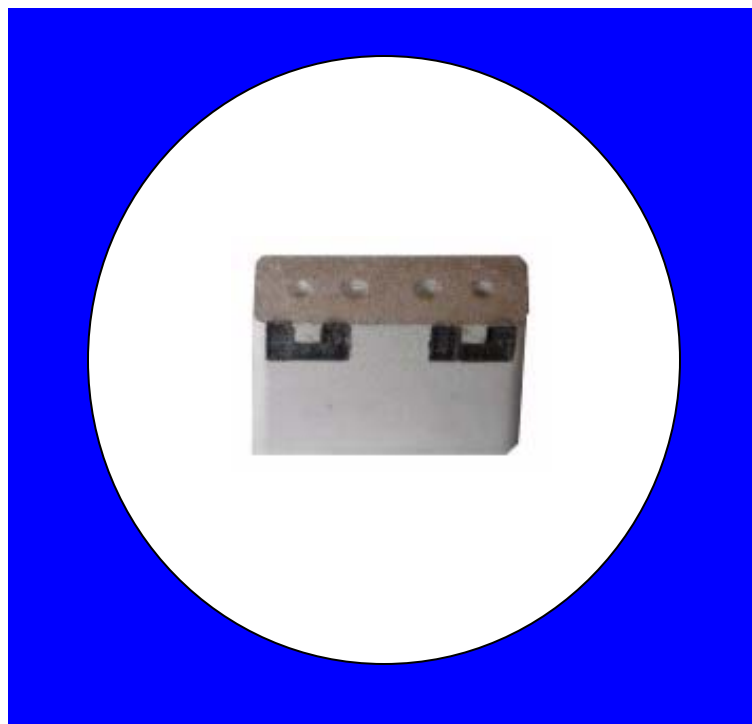
Description

Surface mount, silver (Ag) coated barium ceramic filter.

Weight: 0.7 grams typical

Material: Filter is composed of a ceramic block plated with Ag.

Filter complies with RoHS standards.

**Electrical Specifications**

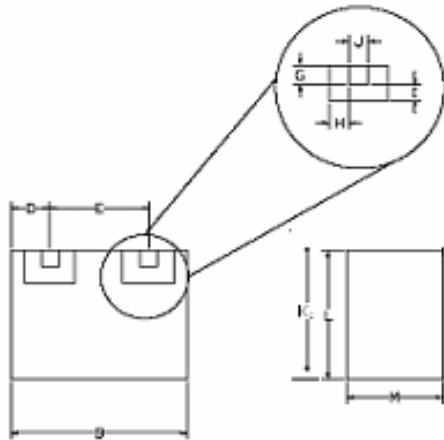
<u>Parameter</u>	Frequency MHz	Typical @ 25°C	Specification @ 25°C	Spec over -40°C to +85°C
Passband Iloss	2400-2485	-1.30	-1.80	-2.00
Passband Ripple	2400-2485	0.20	0.90	1.00
Passband Return Loss @ TX	2400-2485	-13.00	-10.00	-10.00
Passband Return Loss @ Ant	2400-2485	-13.00	-10.00	-10.00
Attenuation	2600	-33.00	-30.00	-30.00
Power into any port		1 Watt max		

Note: Supplier shall test each filter to the critical electrical specifications of the above table. Any subsequent audits may deviate from in value due to measurement repeatability among different test systems. Such deviations shall not exceed the following limits:

<u>Specification Allowance</u>	
Insertion Loss	0.1 dB
Return Loss	1.0 dB
Stopbands	1.0 dB

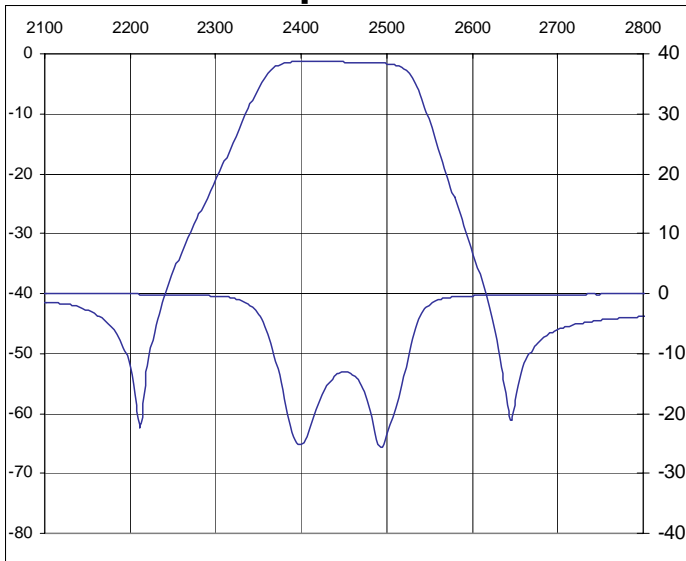
Mechanical Drawing

Rev 1 – Origin Date: October 19, 2006 – Revision Date: November 21, 2006

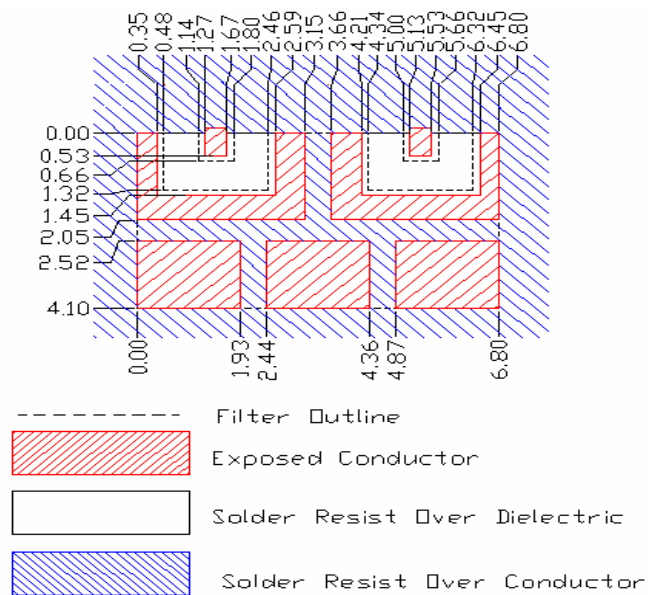


Dim	Nominal (mm)	Tolerance (mm) +/- or max
A		
B	6.8	max
C		
D	1.35	0.25
E	3.86	0.13
F		
G	0.66	0.13
H	0.66	0.13
I	0.66	0.13
J	0.66	0.13
K	5.0	max
L	5.5	max
M	2.3	max

Electrical response

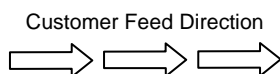


PCB Layout

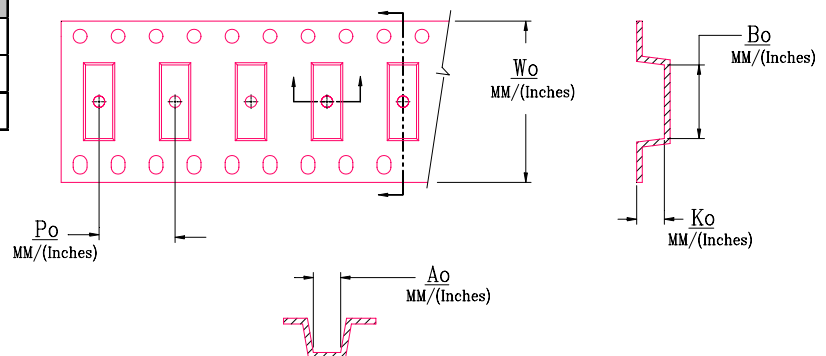


Packaging and Marking

DIMENSION	UNITS	SPECIFICATION
REEL DIAMETER	mm	330
REELWEIGHT	kg	1.5
REEL QUANTITY	ea.	1000



CTS
398
YWW



Wo	Ao	Bo	Ko	Po
Inches/mm	Inches/mm	Inches/mm	Inches/mm	Inches/mm
0.630"/16	0.217"/5.50	0.295"/7.5	0.087"/2.20	0.315"/8.00

Mouser Electronics

Authorized Distributor

Click to View Pricing, Inventory, Delivery & Lifecycle Information:

CTS:

CER0398A