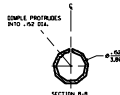
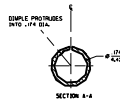
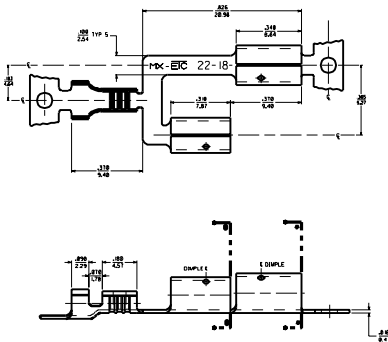


PART NUMBER	DESCRIPTION	FINISH
19725-4000	WITH DIMPLES	PLATED
19725-4001	WITHOUT DIMPLES	
19725-4002	WITH DIMPLES	UNPLATED
19725-4005	WITHOUT DIMPLES	



NOTES:
1. MATERIAL: C26000 BRASS
2. FINISH: 12N PLATED

CUSTOMER DRAWING

DRAWING SHEET HEADLINE		REVISE ONLY ON CAD SYSTEM	
TITLE: Krimptite Double Female Bullet Receptacle .156 & .180 DIA 22-18 AWC		DATE: 07/86/26	
DRAWN BY: DAY		CHECKED BY: RWD	
DATE: 07/86/26		DATE: 07/86/26	
SCALE: 1:1		SCALE: 1:1	
MATERIAL: C26000 BRASS		MATERIAL: C26000 BRASS	
FINISH: 12N PLATED		FINISH: 12N PLATED	
PART NO: 19725-4000		PART NO: 19725-4000	
REV: 1		REV: 1	

Mouser Electronics

Authorized Distributor

Click to View Pricing, Inventory, Delivery & Lifecycle Information:

Molex:

19725-4005