

THIS DRAWING IS UNPUBLISHED.

RELEASED FOR PUBLICATION

ALL RIGHTS RESERVED.

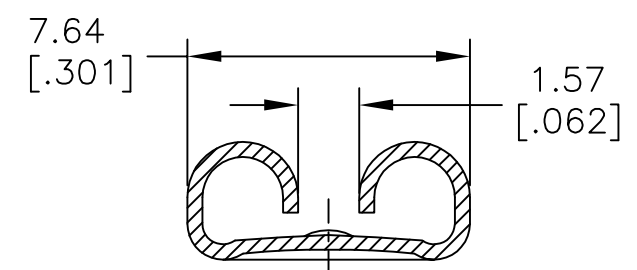
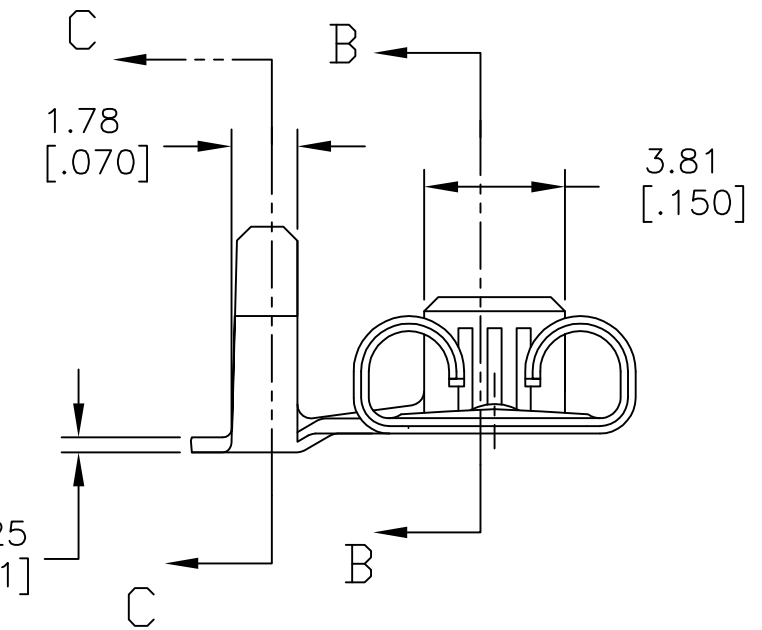
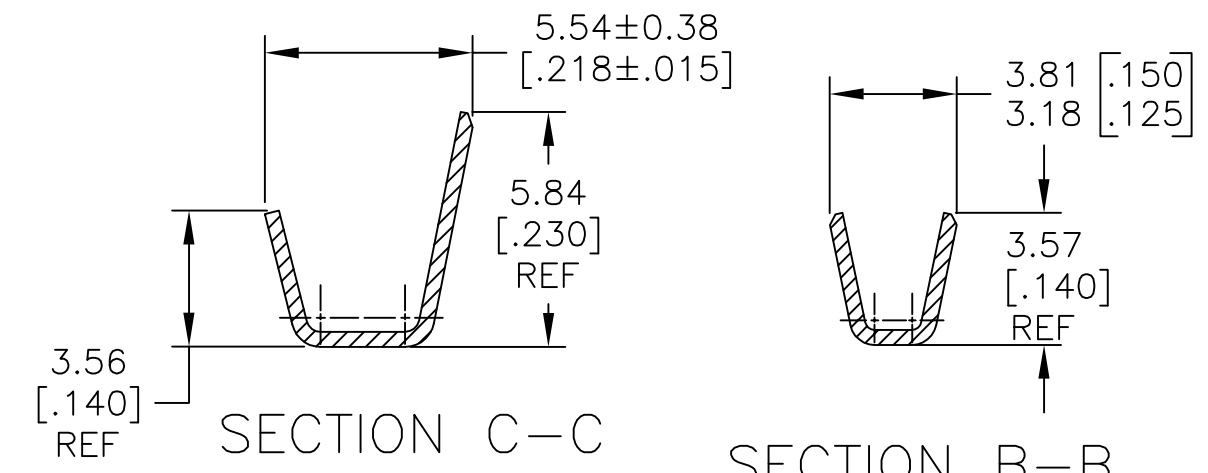
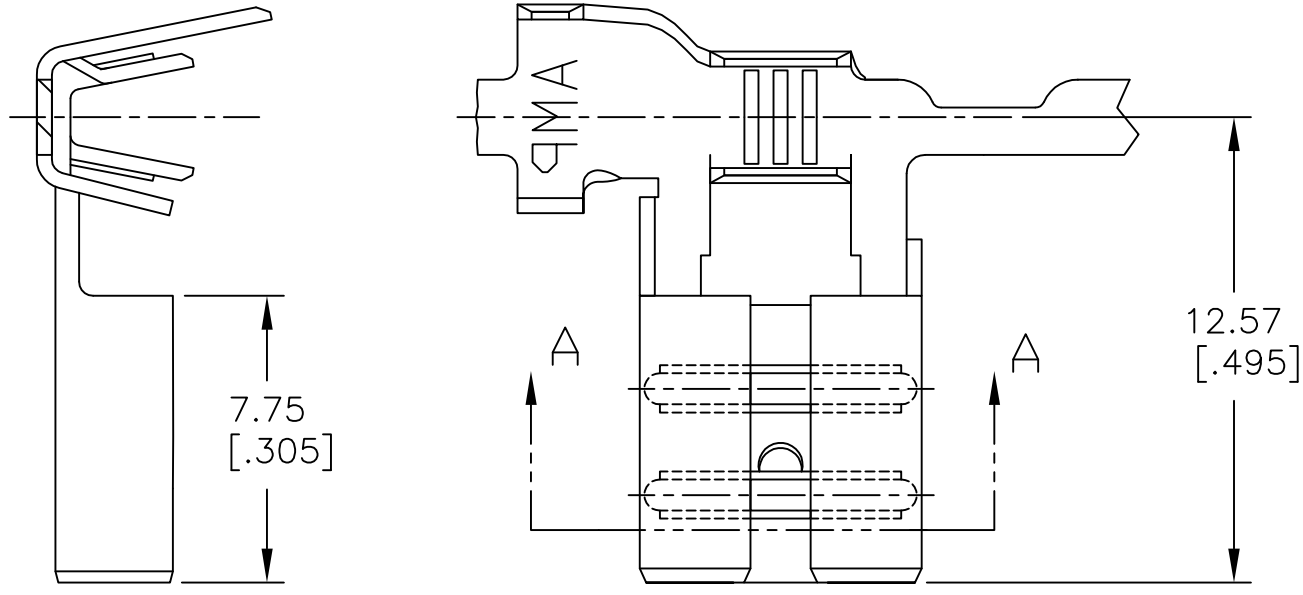
© COPYRIGHT - By -

REVISIONS

P	LTR	DESCRIPTION	DATE	DWN	APVD
	A3	REVISED PER ECR-16-012674	11SEP2016	BW	RS

- 1 CONTINUOUS STRIP ON REELS.
- 2 WIRE SIZE #18-#14 AWG.
- 3 INSULATION DIA 2.79-4.06 [.110-.160].
- 4 MATING TAB THK IS 0.81±0.025 [.032±.001]
- 5 RECEPTACLE IS DESIGNED TO OPTIMIZE MATING AND UNMATING FORCES ON A TAB WITH A RETENTION HOLE. VALUES MAY VARY ON A TAB WITH A DETENT.

△ WITH STRESS RELIEF PROCESS.



TIN PLATE	△ 1742999-3
TIN PLATE	1742999-2
-----	1742999-1
FINISH	PART NO.

0.41±0.025 [.016±.001]

THIS DRAWING IS A CONTROLLED DOCUMENT.		DWN	JR RUTH	30NOV2012	STE TE Connectivity		
DIMENSIONS: mm[INCHES]		CHK	PETE DESANTIS	30NOV12			
TOLERANCES UNLESS OTHERWISE SPECIFIED:		APVD	PETE DESANTIS	30NOV12	NAME		
0 PLC ± -		PRODUCT SPEC		RECEPTACLE, FLAG FASTON, .250 SERIES			
1 PLC ± -		APPLICATION SPEC		SIZE	CAGE CODE	DRAWING NO	RESTRICTED TO
2 PLC ± 0.25[.010]		MATERIAL		A3	00779	C=1742999	-
3 PLC ± -		FINISH		CUSTOMER DRAWING			SCALE
4 PLC ± -		SEE TABLE		5:1			SHEET
ANGLES ± -				1 OF 1			REV
				A3			

Mouser Electronics

Authorized Distributor

Click to View Pricing, Inventory, Delivery & Lifecycle Information:

[TE Connectivity:](#)

[1742999-1](#) [1742999-1 \(Cut Strip\)](#) [1742999-1 \(Mouser Reel\)](#)