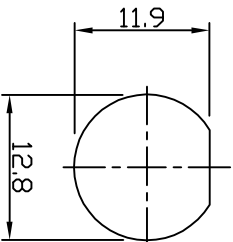
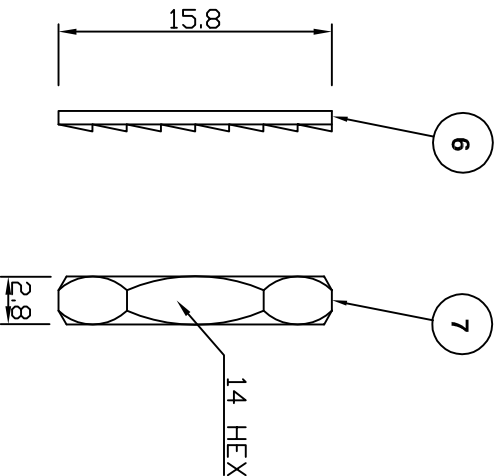


RECOMMENDED PCB LAYOUT



RECOMMENDED PANEL CUTOUT



Electrical Characteristics

Nominal Impedance: 75 ohms
 Frequency Range: DC to 1 GHz
 VSWR: 1.3:1 maximum
 Insertion Loss: 0.2 dB at 1 GHz
 Operating Voltage (rms): 500 V maximum at sea level
 Dielectric Withstand Voltage (rms): 1500 V maximum at sea level
 Contact Resistance: 3.0 milliohms maximum
 Insulation Resistance: 5000 megohms minimum

Mechanical Characteristics

Mating Cycles: 500 cycles minimum
 Interface Dimensions: Conform to MIL-C-39012

Environmental Characteristics

Temperature Range: -55 °C to +85 °C

REF.	DESCRIPTION	MATERIAL	PLATING
1	Body	Zinc Alloy	Nickel
2	Insulator	Polypropylene	
3	Ground Terminal	Copper-clad Steel	Tin
4	Socket Contact	Phosphor	Gold
5	Mount Post	Phosphor	Tin > 5 Microns
6	Lock Washer	Brass	Nickel
7	Hex Nut	Brass	Nickel

PCB Layout	MS	6	28 Aug 09
Complete Update	KA	5	13 Mar 08
Plating thickness added	MS	4	15 Jan 08
Nut & washer added	JW	3	04 Apr 06
CAD Issue	SN	2	07 Feb 02
First Issue	DH	1	06 Aug 98
DESCRIPTION OF REVISION	APPVD	ISS	DATE



Connectivity Solutions
 7-13 Russel Way,
 Witford Industrial Estate,
 Chelmsford, Essex,
 CM1 3AA, UK.
 Tel: +44 (0) 1245 359515
 Fax: +44 (0) 1245 358938

SCALE: Not To Scale

DIMENSIONS: mm

TOLERANCES:
 ± 0.2mm unless
 otherwise stated

DRAWN BY:

J Williams

CHECKED BY:

M Terry

APPROVED BY:

A Tusl

DATE:

04 Apr 06

TITLE:

**BNC Vertical PCB
 Mount Jack**

PART NUMBER:

VBM301-75

PAGE: 1 of 1

Mouser Electronics

Authorized Distributor

Click to View Pricing, Inventory, Delivery & Lifecycle Information:

[Cinch Connectivity Solutions:](#)

[VBM301-75](#)